

Anti-CD44v6 antibody [VFF-7] ab30436

KO 評価済

★★★★★ 1 Abreviews 12 References 画像数 ?

医薬用外劇物

製品の概要

製品名	Anti-CD44v6 antibody [VFF-7]
製品の詳細	Mouse monoclonal [VFF-7] to CD44v6
由来種	Mouse
アプリケーション	適用あり: IHC-P, WB
種交差性	交差種: Human
免疫原	Fusion protein corresponding to Human CD44v6. Glutathione S Transferase (GST) fusion protein corresponding to the variable domains (v3 to v10) of human CD44. Database link: P16070
エピトープ	This antibody specifically recognises an epitope encoded by exon v6 on the variant portion of human CD44.
ポジティブ・コントロール	WB: HeLa and A549 cell lysates. IHC-P: Human breast cancer tissue.
特記事項	<p>The Life Science industry has been in the grips of a reproducibility crisis for a number of years. Abcam is leading the way in addressing this with our range of recombinant monoclonal antibodies and knockout edited cell lines for gold-standard validation. Please check that this product meets your needs before purchasing.</p> <p>If you have any questions, special requirements or concerns, please send us an inquiry and/or contact our Support team ahead of purchase. Recommended alternatives for this product can be found below, along with publications, customer reviews and Q&As</p>

製品の特性

製品の状態	Liquid
保存方法	Shipped at 4°C. Store at +4°C short term (1-2 weeks). Upon delivery aliquot. Store at -20°C long term.
バッファー	Preservative: 0.01% Thimerosal (merthiolate) Constituent: PBS
精製度	Protein G purified
ポリ/モノ	モノクローナル

クローン名	VFF-7
ミエローマ	P3x63-Ag8.653
アイソタイプ	IgG1

アプリケーション

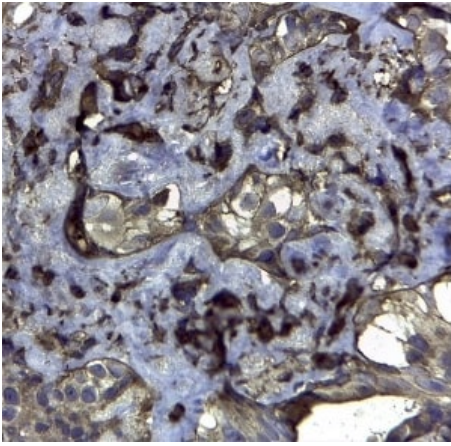
The Abpromise guarantee **Abpromise保証は、次のテスト済みアプリケーションにおけるab30436の使用に適用されず**
 アプリケーションノートには、推奨の開始希釈率がありますが、適切な希釈率につきましてはご検討ください。

アプリケーション	Abreviews	特記事項
IHC-P	★★★★☆ (1)	1/200.
WB		Use at an assay dependent concentration.

ターゲット情報

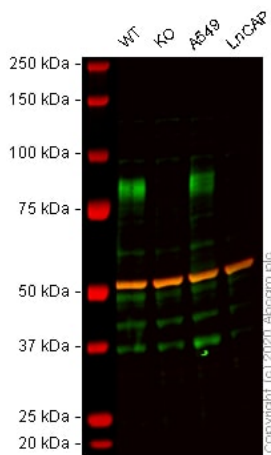
機能	Receptor for hyaluronic acid (HA). Mediates cell-cell and cell-matrix interactions through its affinity for HA, and possibly also through its affinity for other ligands such as osteopontin, collagens, and matrix metalloproteinases (MMPs). Adhesion with HA plays an important role in cell migration, tumor growth and progression. In cancer cells, may play an important role in invadopodia formation. Also involved in lymphocyte activation, recirculation and homing, and in hematopoiesis. Altered expression or dysfunction causes numerous pathogenic phenotypes. Great protein heterogeneity due to numerous alternative splicing and post-translational modification events.
組織特異性	Isoform 10 (epithelial isoform) is expressed by cells of epithelium and highly expressed by carcinomas. Expression is repressed in neuroblastoma cells.
配列類似性	Contains 1 Link domain.
ドメイン	The lectin-like LINK domain is responsible for hyaluronan binding.
翻訳後修飾	Proteolytically cleaved in the extracellular matrix by specific proteinases (possibly MMPs) in several cell lines and tumors. N- and O-glycosylated. O-glycosylation contains more-or-less-sulfated chondroitin sulfate glycans, whose number may affect the accessibility of specific proteinases to their cleavage site(s). It is uncertain if O-glycosylation occurs on Thr-637 or Thr-638. Phosphorylated; activation of PKC results in the dephosphorylation of Ser-706 (constitutive phosphorylation site), and the phosphorylation of Ser-672.
細胞内局在	Membrane. Colocalizes with actin in membrane protrusions at wounding edges.

画像



Immunohistochemistry (Formalin/PFA-fixed paraffin-embedded sections) - Anti-CD44v6 antibody [VFF-7] (ab30436)

Immunoperoxidase staining of formalin fixed, paraffin embedded human breast cancer tissue with ab30436 at 1/200 dilution.



Western blot - Anti-CD44v6 antibody [VFF-7] (ab30436)

All lanes : Anti-CD44v6 antibody [VFF-7] (ab30436) at 1/1000 dilution

Lane 1 : Wild-type HeLa (Human epithelial cell line from cervix adenocarcinoma) whole cell lysate

Lane 2 : CD44 knockout HeLa (Human epithelial cell line from cervix adenocarcinoma) whole cell lysate

Lane 3 : A549 (Human lung carcinoma cell line) whole cell lysate

Lane 4 : LNCaP (Human prostate cancer cell line) whole cell lysate

Lysates/proteins at 20 µg per lane.

Performed under reducing conditions.

Observed band size: 80 kDa

Lanes 1 - 4: Merged signal (red and green). Green - ab30436 observed at 80 kDa. Red - loading control, **ab52866** (Rabbit anti-alpha Tubulin antibody [EP1332Y]) observed at 55kDa.

ab30436 was shown to react with CD44v6 in wild-type HeLa cells in western blot. Loss of signal was observed when CD44 knockout

sample was used. Wild-type HeLa and CD44 knockout cell lysates were subjected to SDS-PAGE. Membranes were blocked in 3% milk in TBS-T (0.1% Tween[®]) before incubation with ab30436 and **ab52866** (Rabbit anti-alpha Tubulin antibody [EP1332Y]) overnight at 4°C at a 1 in 1000 dilution and a 1 in 20000 dilution respectively. Blots were incubated with Goat anti-Mouse IgG H&L (IRDye[®] 800CW) preabsorbed (**ab216772**) and Goat anti-Rabbit IgG H&L (IRDye[®] 680RD) preabsorbed (**ab216777**) secondary antibodies at 1 in 20000 dilution for 1 hour at room temperature before imaging.

Please note: All products are "FOR RESEARCH USE ONLY. NOT FOR USE IN DIAGNOSTIC PROCEDURES"

Our Abpromise to you: Quality guaranteed and expert technical support

- Replacement or refund for products not performing as stated on the datasheet
- Valid for 12 months from date of delivery
- Response to your inquiry within 24 hours
- We provide support in Chinese, English, French, German, Japanese and Spanish
- Extensive multi-media technical resources to help you
- We investigate all quality concerns to ensure our products perform to the highest standards

If the product does not perform as described on this datasheet, we will offer a refund or replacement. For full details of the Abpromise, please visit <https://www.abcam.co.jp/abpromise> or contact our technical team.

Terms and conditions

- Guarantee only valid for products bought direct from Abcam or one of our authorized distributors