


### Anti-CD40 antibody ab13545

★★★★★ [7 Abreviews](#) [23 References](#) [画像数 4](#)

#### 製品の概要

製品名	Anti-CD40 antibody
製品の詳細	Rabbit polyclonal to CD40
由来種	Rabbit
特異性	The antibody specificity is confirmed by specific peptide inhibition in immunoblotting studies.
アプリケーション	<b>適用あり:</b> IHC-P, WB
種交差性	<b>交差種:</b> Mouse, Rat, Sheep, Rabbit, Guinea pig, Hamster, Cow, Human, Pig, Monkey <b>交差が予測される動物種:</b> Chicken, Dog 
免疫原	Synthetic peptide: CQPVTQEDGKESRISVQERQ conjugated to KLH, corresponding to amino acids 258-277 of Human CD40. <a href="#">Run BLAST with</a> <a href="#">Run BLAST with</a>
特記事項	Storage below -20°C is not recommended. For maximum product recovery centrifuge the product vial before removing cap. Shipped on gel packs.  The Life Science industry has been in the grips of a reproducibility crisis for a number of years. Abcam is leading the way in addressing this with our range of recombinant monoclonal antibodies and knockout edited cell lines for gold-standard validation. Please check that this product meets your needs before purchasing.  If you have any questions, special requirements or concerns, please send us an inquiry and/or contact our Support team ahead of purchase. Recommended alternatives for this product can be found below, along with publications, customer reviews and Q&As

#### 製品の特性

製品の状態	Liquid
保存方法	Shipped at 4°C. Upon delivery aliquot and store at -20°C. Avoid freeze / thaw cycles.
バッファー	Preservative: 0.09% Sodium azide Constituents: PBS, 50% Glycerol (glycerin, glycerine)
精製度	Affinity purified
特記事項(精製)	Peptide affinity purified.
ポリ/モノ	ポリクローナル

アプリケーション

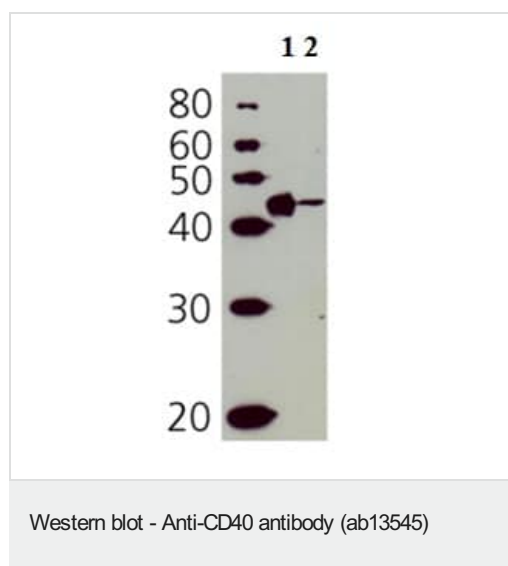
The Abpromise guarantee **Abpromise保証は、次のテスト済みアプリケーションにおけるab13545の使用に適用されず**  
 アプリケーションノートには、推奨の開始希釈率がありますが、適切な希釈率につきましてはご検討ください。

アプリケーション	Abreviews	特記事項
IHC-P	★★★★★ (5)	Use at an assay dependent concentration.
WB	★★★★★ (2)	1/1000. Detects a band of approximately 40 kDa (predicted molecular weight: 34 kDa).

ターゲット情報

機能	Receptor for TNFSF5/CD40LG.
組織特異性	B-cells and in primary carcinomas.
関連疾患	Defects in CD40 are the cause of hyper-IgM immunodeficiency syndrome type 3 (HIGM3) [MIM:606843]; also known as hyper-IgM syndrome 3. HIGM3 is an autosomal recessive disorder which includes an inability of B cells to undergo isotype switching, one of the final differentiation steps in the humoral immune system, an inability to mount an antibody-specific immune response, and a lack of germinal center formation.
配列類似性	Contains 4 TNFR-Cys repeats.
細胞内局在	Secreted and Cell membrane.

画像

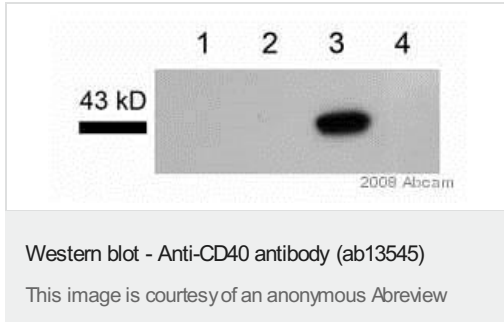


**All lanes :** Anti-CD40 antibody (ab13545) at 1/200 dilution

**Lane 1 :** ESK4 cell lysate

**Lane 2 :** Molt 4 cell lysate

**Predicted band size:** 34 kDa



**All lanes** : Anti-CD40 antibody (ab13545) at 1/5000 dilution

**Lane 1** : Human B chronic lymphocytic leukaemia cells, nuclear fraction

**Lane 2** : Human B chronic lymphocytic leukaemia cells, cytoskeletal fraction

**Lane 3** : Human B chronic lymphocytic leukaemia cells, membrane fraction

**Lane 4** : Human B chronic lymphocytic leukaemia cells, cytosolic fraction

Lysates/proteins at 18 µg per lane.

### **Secondary**

**All lanes** : HRP conjugated goat anti-rabbit

Developed using the ECL technique.

Performed under reducing conditions.

**Predicted band size:** 34 kDa

**Observed band size:** 42 kDa

**Exposure time:** 3 minutes

The primary antibody was incubated with the membrane for 16 hours at 4°C.



Western blot - Anti-CD40 antibody (ab13545)

Anti-CD40 antibody (ab13545) at 1/1000 dilution + Recombinant human CD40 protein (Fc Chimera Active) ([ab83917](#)) at 1 µg

**Secondary**

Goat Anti-Rabbit IgG H&L (HRP) preadsorbed ([ab97080](#)) at 1/5000 dilution

Developed using the ECL technique.

Performed under reducing conditions.

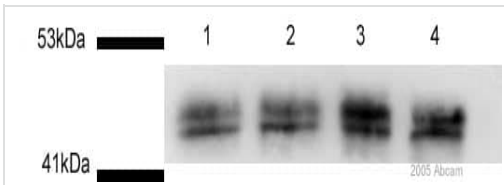
**Predicted band size:** 34 kDa

**Exposure time:** 8 minutes

**All lanes :** Anti-CD40 antibody (ab13545) at 1/1000 dilution

**Lanes 1-2 :** Control human HCAEC cells - whole cell lysate

**Lanes 3-4 :** Treated human HCAEC cells - whole cell lysate



Western blot - Anti-CD40 antibody (ab13545)

**Secondary**

**All lanes :** HRP conjugated Goat Anti-Rabbit IgG

Developed using the ECL technique.

Performed under reducing conditions.

**Predicted band size:** 34 kDa

**Observed band size:** 45 kDa

**Exposure time:** 20 seconds

This image is courtesy of an Abreview submitted on **10 August 2005**.

**Please note:** All products are "FOR RESEARCH USE ONLY. NOT FOR USE IN DIAGNOSTIC PROCEDURES"

**Our Promise to you: Quality guaranteed and expert technical support**

- Replacement or refund for products not performing as stated on the datasheet
- Valid for 12 months from date of delivery

- Response to your inquiry within 24 hours
- We provide support in Chinese, English, French, German, Japanese and Spanish
- Extensive multi-media technical resources to help you
- We investigate all quality concerns to ensure our products perform to the highest standards

If the product does not perform as described on this datasheet, we will offer a refund or replacement. For full details of the Abpromise, please visit <https://www.abcam.co.jp/abpromise> or contact our technical team.

### **Terms and conditions**

---

- Guarantee only valid for products bought direct from Abcam or one of our authorized distributors