

Anti-CD38 antibody [90] ab61400

画像数 2

製品の概要

製品名	Anti-CD38 antibody [90]
製品の詳細	Rat monoclonal [90] to CD38
由来種	Rat
アプリケーション	適用あり: Flow Cyt, IHC-Fr
種交差性	交差種: Mouse
免疫原	Tissue, cells or virus corresponding to Mouse CD38. Mouse pre-B cells.
ポジティブ・コントロール	Flow Cyt: C57/BL6 splenocytes. IHC-Fr: Ms Spleen
特記事項	<p>This antibody clone is manufactured by Abcam. If you require a custom buffer formulation or conjugation for your experiments, please contact orders@abcam.com.</p> <p>The Life Science industry has been in the grips of a reproducibility crisis for a number of years. Abcam is leading the way in addressing this with our range of recombinant monoclonal antibodies and knockout edited cell lines for gold-standard validation. Please check that this product meets your needs before purchasing.</p> <p>If you have any questions, special requirements or concerns, please send us an inquiry and/or contact our Support team ahead of purchase. Recommended alternatives for this product can be found below, along with publications, customer reviews and Q&As</p>

製品の特性

製品の状態	Liquid
保存方法	Shipped at 4°C. Store at +4°C short term (1-2 weeks). Upon delivery aliquot. Store at -20°C long term. Avoid freeze / thaw cycle.
バッファー	Preservative: 0.02% Sodium azide Constituent: PBS
精製度	Protein G purified
特記事項 (精製)	Purified from TCS.
一次抗体 備考	In mouse CD38 is expressed by follicular B cells, is down regulated on germinal centre B cells, and not expressed by mature plasma cells. This pattern of expression contrasts strikingly with that seen in the human.
ポリ/モノ	モノクローナル

クローン名	90
アイソタイプ	IgG2a
軽鎖の種類	kappa

アプリケーション

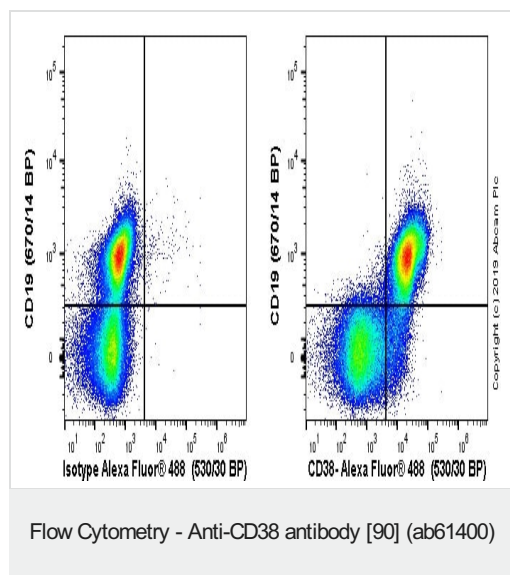
The Abpromise guarantee **Abpromise保証は、**次のテスト済みアプリケーションにおけるab61400の使用に適用されます
アプリケーションノートには、推奨の開始希釈率がありますが、適切な希釈率につきましてはご検討ください。

アプリケーション	Abreviews	特記事項
Flow Cyt		Use a concentration of 1 µg/ml.
IHC-Fr		Use a concentration of 1 µg/ml.

ターゲット情報

機能	Synthesizes cyclic ADP-ribose, a second messenger for glucose-induced insulin secretion. Also has cADPr hydrolase activity. Also moonlights as a receptor in cells of the immune system.
組織特異性	Expressed at high levels in pancreas, liver, kidney, brain, testis, ovary, placenta, malignant lymphoma and neuroblastoma.
配列類似性	Belongs to the ADP-ribosyl cyclase family.
発生段階	Preferentially expressed at both early and late stages of the B and T-cell maturation. It is also detected on erythroid and myeloid progenitors in bone marrow, where the level of surface expression was shown to decrease during differentiation of blast-forming unit E to colony-forming unit E.
細胞内局在	Membrane.
製品の状態	There are 2 isoforms produced by alternative splicing.

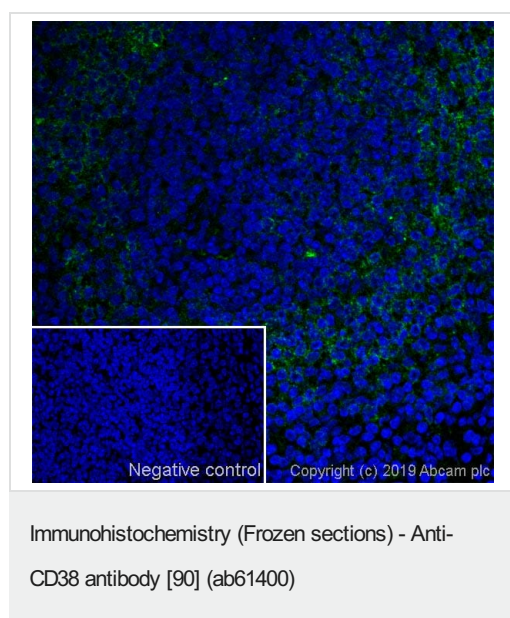
画像



C57BL/6 mouse splenocytes stained with ab61400 (right) or Rat IgG2aK (monoclonal) (left). C57BL/6 Mouse splenocytes were incubated for 30 min on ice in 1x PBS containing 10 µg/ml anti CD16/32 antibody and 10% normal goat serum to block FC receptors and non-specific protein-protein interactions followed by the antibody (ab61400) or Rat IgG2a Isotype (1×10^6 in 100 µl at 1 µg/ml) (left) for 30 min on ice.

The secondary antibody Goat anti-rat IgG H&L (Alexa Fluor® 488, pre-adsorbed) (**ab150165**) was used at 1/2000 dilution for 30 min at 4°. The cells were simultaneously stained with CD19 APC conjugated antibody.

Acquisition of >50,000 events were collected using a 50 mW Blue laser (488nm) and 530/30 bandpass filter. Events were gated on viable lymphocytes.



IHC image of CD38 staining in a section of frozen normal mouse Spleen.

The section was fixed using 10% formaldehyde in 1XPBS for 10 minutes. No antigen retrieval step was performed prior to staining. Non-specific protein-protein interactions were then blocked in TBS containing 0.025% (v/v) Triton X-100, 0.3M glycine and 1% (w/v) BSA for 1h at room temperature. The section was then incubated overnight at +4°C in TBS containing 0.025% (v/v) Triton X-100 and 1% (w/v) BSA with ab61400 at 1 µg/ml. The section was then incubated with **ab150165** (Goat Anti-Rat IgG H&L (Alexa Fluor® 488) preabsorbed, (Shown in green) 1/1000) for 1 hour at room temperature. DAPI was used to stain the cell nuclei (blue). The secondary-only control insert image is taken from an identical assay without primary antibody. The section was then mounted using Fluoromount®.

Image was taken with a confocal microscope (Leica-Microsystems, TCS SP8).

For IHC staining systems (automated and non-automated), customers should optimize variable parameters such as antibody concentrations and incubation times.

Please note: All products are "FOR RESEARCH USE ONLY. NOT FOR USE IN DIAGNOSTIC PROCEDURES"

Our Abpromise to you: Quality guaranteed and expert technical support

- Replacement or refund for products not performing as stated on the datasheet
- Valid for 12 months from date of delivery

- Response to your inquiry within 24 hours
- We provide support in Chinese, English, French, German, Japanese and Spanish
- Extensive multi-media technical resources to help you
- We investigate all quality concerns to ensure our products perform to the highest standards

If the product does not perform as described on this datasheet, we will offer a refund or replacement. For full details of the Abpromise, please visit <https://www.abcam.co.jp/abpromise> or contact our technical team.

Terms and conditions

- Guarantee only valid for products bought direct from Abcam or one of our authorized distributors