




# Anti-CD33 antibody ab203032

画像数 2

### 製品の概要

製品名	Anti-CD33 antibody
製品の詳細	Rabbit polyclonal to CD33
由来種	Rabbit
アプリケーション	<b>適用あり:</b> Flow Cyt (Intra), IHC-P
種交差性	<b>交差種:</b> Mouse <b>交差が予測される動物種:</b> Rat 
免疫原	<p>Synthetic peptide within Mouse CD33 aa 50-150 conjugated to keyhole limpet haemocyanin. The exact immunogen sequence used to generate this antibody is proprietary information. If additional detail on the immunogen is needed to determine the suitability of the antibody for your needs, please <b>contact</b> our Scientific Support team to discuss your requirements.</p> <p>Database link: <a href="#">Q63994</a></p> <div>  <a href="#">Run BLAST with</a>  <a href="#">Run BLAST with</a> </div>
ポジティブ・コントロール	IHC-P: Mouse intestine tissue. Flow Cyt (Intra): Mouse splenocytes.
特記事項	<p>The Life Science industry has been in the grips of a reproducibility crisis for a number of years. Abcam is leading the way in addressing this with our range of recombinant monoclonal antibodies and knockout edited cell lines for gold-standard validation. Please check that this product meets your needs before purchasing.</p> <p>If you have any questions, special requirements or concerns, please send us an inquiry and/or contact our Support team ahead of purchase. Recommended alternatives for this product can be found below, along with publications, customer reviews and Q&amp;As</p>

### 製品の特性

製品の状態	Liquid
保存方法	Shipped at 4°C. Store at +4°C short term (1-2 weeks). Upon delivery aliquot. Store at -20°C long term. Avoid freeze / thaw cycle.
バッファー	<p>pH: 7.40</p> <p>Preservative: 0.02% Proclin 300</p> <p>Constituents: 50% Glycerol (glycerin, glycerine), 1% BSA, 48.98% TBS, 1X</p>
精製度	Protein A purified
ポリ/モノ	ポリクローナル

## アプリケーション

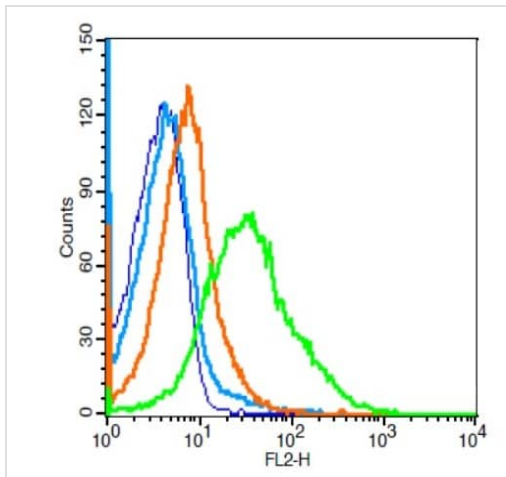
The Abpromise guarantee **Abpromise保証は、次のテスト済みアプリケーションにおけるab203032の使用に適用されます**  
 アプリケーションノートには、推奨の開始希釈率がありますが、適切な希釈率につきましてはご検討ください。

アプリケーション	Abreviews	特記事項
Flow Cyt (Intra)		1/20 - 1/100.
IHC-P		1/100 - 1/500. Perform heat mediated antigen retrieval with citrate buffer pH 6 before commencing with IHC staining protocol. When using a fluorescent probe the recommended dilution is 1/50 – 1/200.

## ターゲット情報

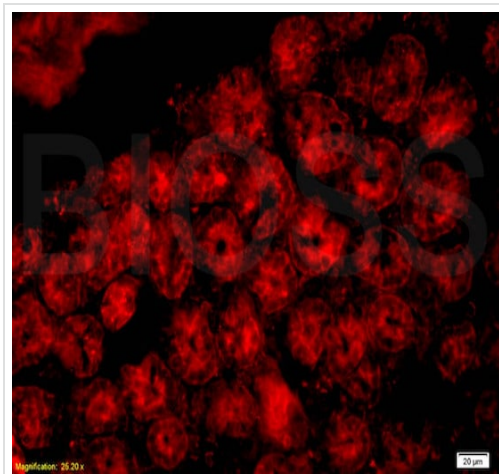
機能	Putative adhesion molecule of myelomonocytic-derived cells that mediates sialic-acid dependent binding to cells. Preferentially binds to alpha-2,6-linked sialic acid. The sialic acid recognition site may be masked by cis interactions with sialic acids on the same cell surface. In the immune response, may act as an inhibitory receptor upon ligand induced tyrosine phosphorylation by recruiting cytoplasmic phosphatase(s) via their SH2 domain(s) that block signal transduction through dephosphorylation of signaling molecules. Induces apoptosis in acute myeloid leukemia (in vitro).
組織特異性	Monocytic/myeloid lineage cells.
配列類似性	Belongs to the immunoglobulin superfamily. SIGLEC (sialic acid binding Ig-like lectin) family. Contains 1 Ig-like C2-type (immunoglobulin-like) domain. Contains 1 Ig-like V-type (immunoglobulin-like) domain.
ドメイン	Contains 2 copies of a cytoplasmic motif that is referred to as the immunoreceptor tyrosine-based inhibitor motif (ITIM). This motif is involved in modulation of cellular responses. The phosphorylated ITIM motif can bind the SH2 domain of several SH2-containing phosphatases.
翻訳後修飾	Phosphorylation of Tyr-340 is involved in binding to PTPN6 and PTPN11. Phosphorylation of Tyr-358 is involved in binding to PTPN6.
細胞内局在	Cell membrane.

## 画像



Flow Cytometry (Intracellular) - Anti-CD33 antibody  
(ab203032)

Intracellular flow cytometric analysis of mouse splenocytes labeling CD33 using ab203032 at 1/100 dilution followed by a PE-conjugated secondary (green) compared to control cells (blue), secondary only (light blue) and isotype control (orange).



Immunohistochemistry (Formalin/PFA-fixed paraffin-embedded sections) - Anti-CD33 antibody  
(ab203032)

Immunohistochemical analysis of formalin/PFA-fixed paraffin-embedded mouse intestine tissue labeling CD33 using ab203032 at a 1/200 dilution, followed by Goat Anti-Rabbit IgG, Cy3 conjugated secondary antibody at 1/200 dilution.

**Please note:** All products are "FOR RESEARCH USE ONLY. NOT FOR USE IN DIAGNOSTIC PROCEDURES"

#### Our Abpromise to you: Quality guaranteed and expert technical support

- Replacement or refund for products not performing as stated on the datasheet
- Valid for 12 months from date of delivery

- Response to your inquiry within 24 hours
- We provide support in Chinese, English, French, German, Japanese and Spanish
- Extensive multi-media technical resources to help you
- We investigate all quality concerns to ensure our products perform to the highest standards

If the product does not perform as described on this datasheet, we will offer a refund or replacement. For full details of the Abpromise, please visit <https://www.abcam.co.jp/abpromise> or contact our technical team.

#### **Terms and conditions**

---

- Guarantee only valid for products bought direct from Abcam or one of our authorized distributors