

Anti-CD3 antibody [UCH-T1] ab215267

画像数 2

製品の概要

製品名	Anti-CD3 antibody [UCH-T1]
製品の詳細	Mouse monoclonal [UCH-T1] to CD3
由来種	Mouse
アプリケーション	適用あり: WB, Flow Cyt
種交差性	交差種: Human
免疫原	Tissue, cells or virus corresponding to Human CD3. (Human infant thymocytes and Sezary cells).
ポジティブ・コントロール	Molt4 and Jurkat whole cell lysate (ab7899); Human PBMCs.
特記事項	<p>Clone UCH-T1 is considered a pan T-cell marker - it can be used for the detection of T cell populations in peripheral blood and lymph nodes and the categorisation of T versus B cell lymphomas and leukaemias. It reacts with the majority of peripheral blood T lymphocytes, a major proportion of thymocytes, the majority of T cell chronic lymphocytic leukaemia cells, Sézary leukaemias and approximately 70% of acute lymphoblastic leukaemias of T cell origin.</p> <p>ab215267 is a recombinant monoclonal antibody produced from the original monoclonal with variable regions (i.e. specificity) from the hybridoma.</p> <p>The Life Science industry has been in the grips of a reproducibility crisis for a number of years. Abcam is leading the way in addressing this with our range of recombinant monoclonal antibodies and knockout edited cell lines for gold-standard validation. Please check that this product meets your needs before purchasing.</p> <p>If you have any questions, special requirements or concerns, please send us an inquiry and/or contact our Support team ahead of purchase. Recommended alternatives for this product can be found below, along with publications, customer reviews and Q&As</p>

製品の特性

保存方法	Shipped at 4°C. Store at +4°C short term (1-2 weeks). Upon delivery aliquot. Store at -20°C long term. Avoid freeze / thaw cycle.
バッファー	Preservative: 0.02% Sodium azide Constituent: 99.98% PBS
精製度	Protein A purified
ポリ/モノ	モノクローナル
クローン名	UCH-T1

アイソタイプ

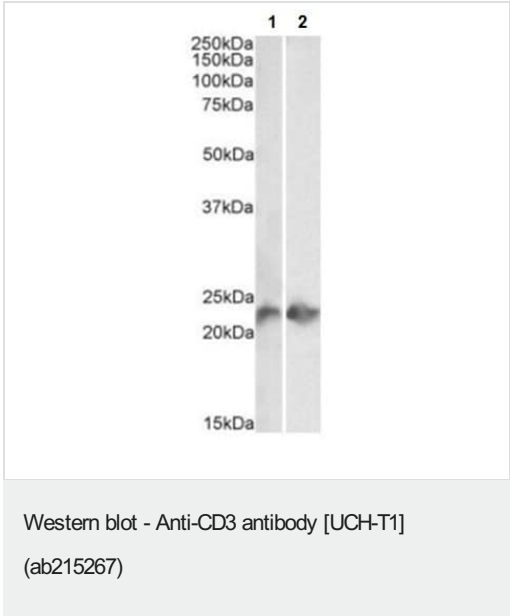
IgG1

アプリケーション

The Abpromise guarantee Abpromise保証は、 次のテスト済みアプリケーションにおけるab215267の使用に適用されます
アプリケーションノートには、推奨の開始希釈率がありますが、適切な希釈率につきましてはご検討ください。

アプリケーション	Abreviews	特記事項
WB		Use a concentration of 3 - 4 µg/ml. Detects a band of approximately 23 kDa (predicted molecular weight: 19 kDa).
Flow Cyt		Use at an assay dependent concentration.

画像



All lanes : Anti-CD3 antibody [UCH-T1] (ab215267) at 3 µg/ml

Lane 1 : Jurkat cell lysate (in RIPA buffer)

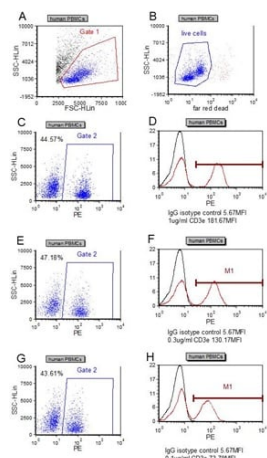
Lane 2 : Molt4 cell lysate (in RIPA buffer)

Lysates/proteins at 35 µg per lane.

Predicted band size: 19 kDa

Observed band size: 23 kDa

Primary incubation was 1 hour.



Flow Cytometry - Anti-CD3 antibody [UCH-T1]
(ab215267)

Flow cytometric analysis of the dose-dependency (D, F, H) of ab215267 binding to live human PBMCs (B). The gating strategy is shown for control purposes (A, B, C, E, G).

Please note: All products are "FOR RESEARCH USE ONLY. NOT FOR USE IN DIAGNOSTIC PROCEDURES"

Our Abpromise to you: Quality guaranteed and expert technical support

- Replacement or refund for products not performing as stated on the datasheet
- Valid for 12 months from date of delivery
- Response to your inquiry within 24 hours
- We provide support in Chinese, English, French, German, Japanese and Spanish
- Extensive multi-media technical resources to help you
- We investigate all quality concerns to ensure our products perform to the highest standards

If the product does not perform as described on this datasheet, we will offer a refund or replacement. For full details of the Abpromise, please visit <https://www.abcam.co.jp/abpromise> or contact our technical team.

Terms and conditions

- Guarantee only valid for products bought direct from Abcam or one of our authorized distributors