

### Anti-CD3 antibody ab828

★★★★★ [8 Abreviews](#) [47 References](#) [画像数 5](#)

#### 製品の概要

|          |   |
|----------|---|
| 製品名      | Anti-CD3 antibody   |
| 製品の詳細    | Rabbit polyclonal to CD3  |
| 由来種      | Rabbit  |
| 特異性      | ab828 is predicted to react with T cell areas in lymphoid tissues derived from various species: human, bovine, porcine, sheep, cat, dog, rat, mouse, Psammomys (sand rat), and chicken. The molecular weight of the polypeptide recognized by the antibody in bovine and swine extracts is 20 kDa.  |
| アプリケーション | <b>適用あり:</b> IHC-P, IHC-Fr  |
| 種交差性     | <b>交差種:</b> Human   |
| 免疫原      | Synthetic peptide corresponding to Human CD3 conjugated to Bovine Serum Albumin (BSA).  |
| 特記事項     | <p>The Life Science industry has been in the grips of a reproducibility crisis for a number of years. Abcam is leading the way in addressing this with our range of recombinant monoclonal antibodies and knockout edited cell lines for gold-standard validation. Please check that this product meets your needs before purchasing.</p> <p>If you have any questions, special requirements or concerns, please send us an inquiry and/or contact our Support team ahead of purchase. Recommended alternatives for this product can be found below, along with publications, customer reviews and Q&amp;As</p> |

#### 製品の特性

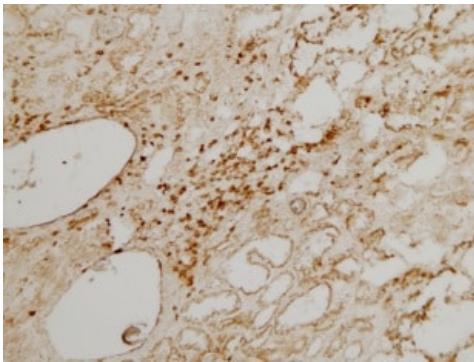
|        |   |
|--------|---|
| 製品の状態  | Liquid  |
| 保存方法   | Shipped at 4°C. Store at +4°C short term (1-2 weeks). Store at -20°C or -80°C. Avoid freeze / thaw cycle. |
| バッファー  | <p>pH: 7.3</p> <p>Preservative: 0.05% Sodium azide</p> <p>Constituent: 1% BSA</p>                         |
| 精製度    | Protein A purified  |
| ポリ/モノ  | ポリクローナル   |
| アイソタイプ | IgG   |

## アプリケーション

**The Abpromise guarantee**      Abpromise保証は、 次のテスト済みアプリケーションにおけるab828の使用に適用されます  
アプリケーションノートには、推奨の開始希釈率がありますが、適切な希釈率につきましてはご検討ください。

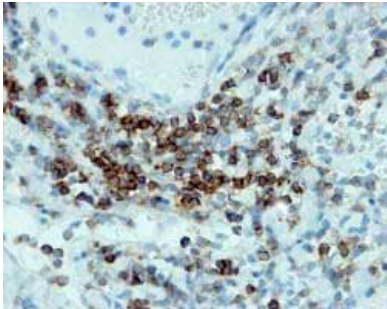
| アプリケーション | Abreviews | 特記事項                                     |
|----------|-----------|--|
| IHC-P    | ★★★★☆ (8) | Use at an assay dependent concentration. |
| IHC-Fr   |           | 1/10 - 1/50. ABC method.                 |

## 画像



Immunohistochemistry (Frozen sections) - Anti-CD3 antibody (ab828)

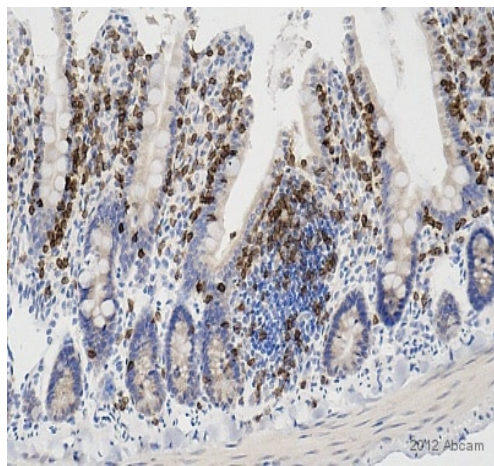
This immunoperoxidase picture shows inflammatory cell infiltration with many T-lymphocytes in the interstitium of human kidneys with congenital nephrotic syndrome of the Finnish type (CNF, NPHS1). Immunoperoxidase staining of frozen sections with ab828 antibody (oval shaped, unstained spaces on the left are glomeruli). This image was kindly supplied as part of the review submitted by Arvi-Matti-Kuusniemi.



Immunohistochemistry (Formalin/PFA-fixed paraffin-embedded sections) - Anti-CD3 antibody (ab828)

Ab828 positively staining formaldehyde fixed human tonsil tissue at 1/50 in conjunction with goat anti rabbit HRP. Detection by DAB. Pressure cooker heat mediated antigen retrieval was employed in citrate buffer pH 6.0.

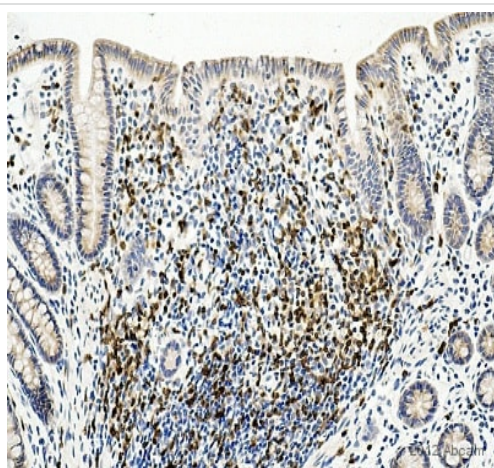
This image is courtesy of an Abreview submitted by **Melanie Black** on **22 Aug 05**. We do not have any further information relating to this image.



Immunohistochemistry (Formalin/PFA-fixed paraffin-embedded sections) - Anti-CD3 antibody (ab828)

This image is courtesy of an abreview submitted by Carl Hobbs, King's College London, United Kingdom

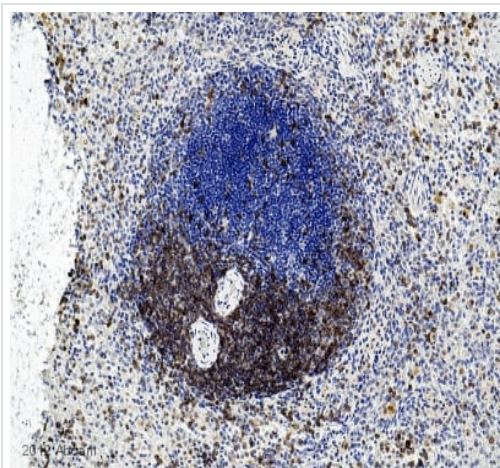
IHC-P image of CD3 staining on rat small intestine using ab828 (1:50). The section was deparaffinized, rehydrated and subjected to heat mediated antigen retrieval using citric acid at pH6. The section was then blocked using 1% BSA at 21°C for 10 mins. The primary antibody was used at 21°C for 2 hours. Goat polyclonal to Rabbit IgG conjugated to biotin was used as secondary antibody (1:250).



Immunohistochemistry (Formalin/PFA-fixed paraffin-embedded sections) - Anti-CD3 antibody (ab828)

This image is courtesy of an abreview submitted by Carl Hobbs, King's College London, United Kingdom

IHC-P image of CD3 staining on monkey colon using ab828 (1:50). The section was deparaffinized, rehydrated and subjected to heat mediated antigen retrieval using citric acid at pH6. The section was then blocked using 1% BSA at 21°C for 10 mins. The primary antibody was used at 21°C for 2 hours. Goat polyclonal to Rabbit IgG conjugated to biotin was used as secondary antibody (1:250).



Immunohistochemistry (Formalin/PFA-fixed paraffin-embedded sections) - Anti-CD3 antibody (ab828)

This image is courtesy of an abreview submitted by Carl Hobbs, King's College London, United Kingdom

IHC-P image of CD3 staining on dog spleen using ab828 (1:50). The section was deparaffinized, rehydrated and subjected to heat mediated antigen retrieval using citric acid at pH6. The section was then blocked using 1% BSA at 21°C for 10 mins. The primary antibody was used at 21°C for 2 hours. Goat polyclonal to Rabbit IgG conjugated to biotin was used as secondary antibody (1:250).

**Please note:** All products are "FOR RESEARCH USE ONLY. NOT FOR USE IN DIAGNOSTIC PROCEDURES"

### Our Abpromise to you: Quality guaranteed and expert technical support

- Replacement or refund for products not performing as stated on the datasheet
- Valid for 12 months from date of delivery
- Response to your inquiry within 24 hours
- We provide support in Chinese, English, French, German, Japanese and Spanish
- Extensive multi-media technical resources to help you
- We investigate all quality concerns to ensure our products perform to the highest standards

If the product does not perform as described on this datasheet, we will offer a refund or replacement. For full details of the Abpromise, please visit <https://www.abcam.co.jp/abpromise> or contact our technical team.

### Terms and conditions

- Guarantee only valid for products bought direct from Abcam or one of our authorized distributors