


Anti-CD276 antibody [SP206] - Low endotoxin, Azide free ab246794

リコンビナント **RabMAb**

1 References [画像数 12](#)

製品の概要

製品名	Anti-CD276 antibody [SP206] - Low endotoxin, Azide free
製品の詳細	Rabbit monoclonal [SP206] to CD276 - Low endotoxin, Azide free
由来種	Rabbit
アプリケーション	適用あり: IHC-P, WB
種交差性	交差種: Human 交差が予測される動物種: Mouse, Rat 
免疫原	Synthetic peptide. This information is proprietary to Abcam and/or its suppliers.
ポジティブ・コントロール	IHC-P: Human lung SCCa tissue.
特記事項	<p>ab246794 is the carrier-free version of ab227670.</p> <p>Our carrier-free antibodies are typically supplied in a PBS-only formulation, purified and free of BSA, sodium azide and glycerol. The carrier-free buffer and high concentration allow for increased conjugation efficiency.</p> <p>This conjugation-ready format is designed for use with fluorochromes, metal isotopes, oligonucleotides, and enzymes, which makes them ideal for antibody labelling, functional and cell-based assays, flow-based assays (e.g. mass cytometry) and Multiplex Imaging applications.</p> <p>Use our conjugation kits for antibody conjugates that are ready-to-use in as little as 20 minutes with <1 minute hands-on-time and 100% antibody recovery: available for fluorescent dyes, HRP, biotin and gold.</p> <p>This product is a recombinant monoclonal antibody, which offers several advantages including:</p> <ul style="list-style-type: none"> - High batch-to-batch consistency and reproducibility - Improved sensitivity and specificity - Long-term security of supply - Animal-free production <p>For more information see here.</p> <p>Our Low endotoxin, azide-free formats have low endotoxin level (≤ 1 EU/ml, determined by the LAL assay) and are free from azide, to achieve consistent experimental results in functional assays.</p>

This product is FOR RESEARCH USE ONLY. For commercial use, please contact

製品の特性

製品の状態	Liquid
保存方法	Shipped at 4°C. Store at +4°C. Do Not Freeze.
バッファー	pH: 7.20 Constituent: PBS
キャリア・フリー	はい
精製度	Protein A/G purified
特記事項 (精製)	Endotoxin level is less than 1 EU/ml as determined by the TAL test
ポリ/モノ	モノクローナル
クローン名	SP206
アイソタイプ	IgG

アプリケーション

The Abpromise guarantee Abpromise保証は、次のテスト済みアプリケーションにおけるab246794の使用に適用されます
アプリケーションノートには、推奨の開始希釈率がありますが、適切な希釈率につきましてはご確認ください。

アプリケーション	Abreviews	特記事項
IHC-P		Use at an assay dependent concentration. Perform heat mediated antigen retrieval with citrate buffer pH 6 before commencing with IHC staining protocol. Primary antibody incubation for 10 minutes at room temperature.
WB		Use at an assay dependent concentration. Predicted molecular weight: 57 kDa. Primary antibody incubation for 1 hour at room temperature.

ターゲット情報

機能	May participate in the regulation of T-cell-mediated immune response. May play a protective role in tumor cells by inhibiting natural-killer mediated cell lysis as well as a role of marker for detection of neuroblastoma cells. May be involved in the development of acute and chronic transplant rejection and in the regulation of lymphocytic activity at mucosal surfaces. Could also play a key role in providing the placenta and fetus with a suitable immunological environment throughout pregnancy. Both isoform 1 and isoform 2 appear to be redundant in their ability to modulate CD4 T-cell responses. Isoform 2 is shown to enhance the induction of cytotoxic T-cells and selectively stimulates interferon gamma production in the presence of T-cell receptor signaling.
組織特異性	Ubiquitous but not detectable in peripheral blood lymphocytes or granulocytes. Weakly expressed in resting monocytes. Expressed in dendritic cells derived from monocytes. Expressed in

epithelial cells of sinonasal tissue. Expressed in extravillous trophoblast cells and Hofbauer cells of the first trimester placenta and term placenta.

配列類似性

Belongs to the immunoglobulin superfamily. BTN/MOG family.

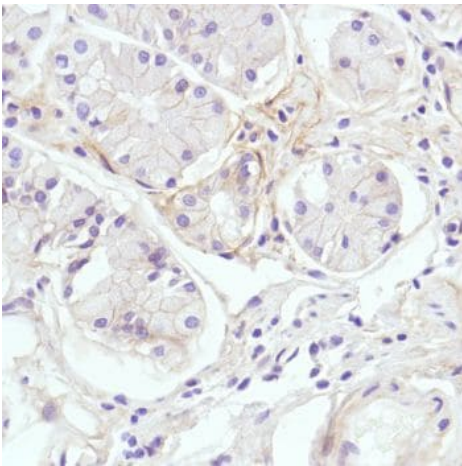
Contains 2 Ig-like C2-type (immunoglobulin-like) domains.

Contains 2 Ig-like V-type (immunoglobulin-like) domains.

細胞内局在

Membrane.

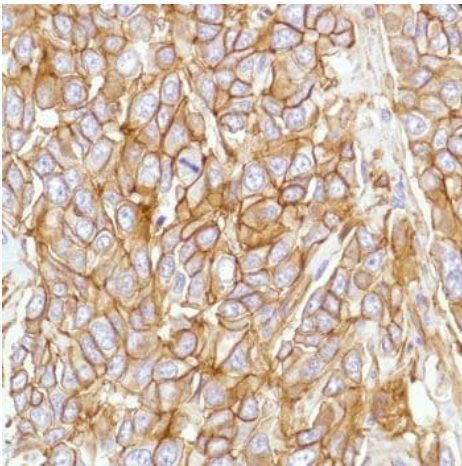
画像



Formalin-fixed, paraffin-embedded human stomach tissue stained for CD276 with **ab227670** at 1/100 dilution in immunohistochemical analysis.

This data was developed using the same antibody clone in a different buffer formulation containing PBS, BSA, glycerol, and sodium azide (**ab227670**).

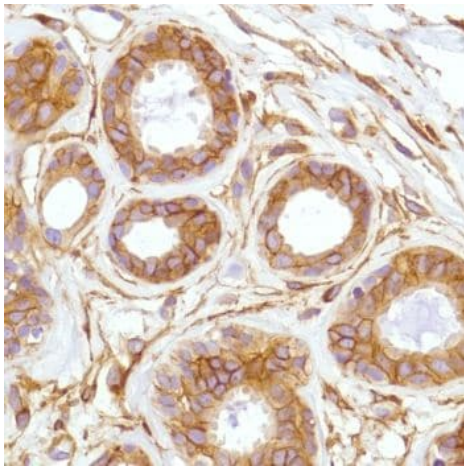
Immunohistochemistry (Formalin/PFA-fixed paraffin-embedded sections) - Anti-CD276 antibody [SP206]
- Low endotoxin, Azide free (ab246794)



Formalin-fixed, paraffin-embedded human breast ductal carcinoma tissue stained for CD276 with **ab227670** at 1/100 dilution in immunohistochemical analysis.

This data was developed using the same antibody clone in a different buffer formulation containing PBS, BSA, glycerol, and sodium azide (**ab227670**).

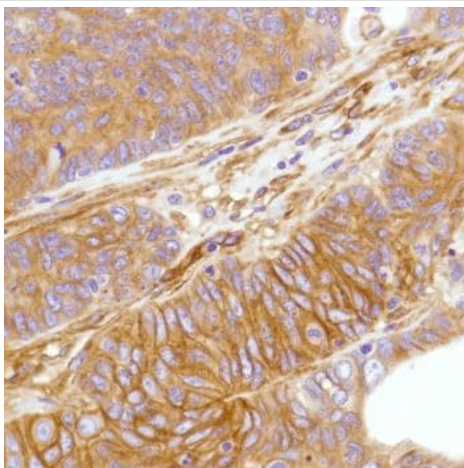
Immunohistochemistry (Formalin/PFA-fixed paraffin-embedded sections) - Anti-CD276 antibody [SP206]
- Low endotoxin, Azide free (ab246794)



Immunohistochemistry (Formalin/PFA-fixed paraffin-embedded sections) - Anti-CD276 antibody [SP206]
 - Low endotoxin, Azide free (ab246794)

Formalin-fixed, paraffin-embedded human breast tissue stained for CD276 with **ab227670** at 1/100 dilution in immunohistochemical analysis.

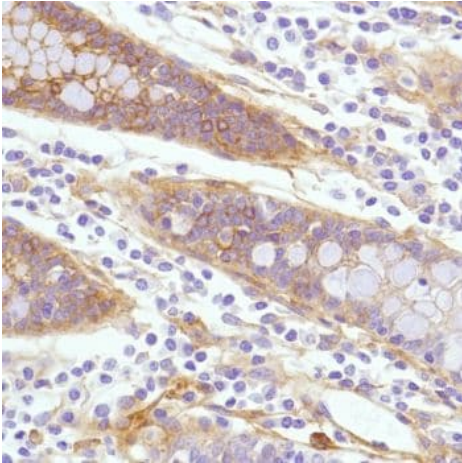
This data was developed using the same antibody clone in a different buffer formulation containing PBS, BSA, glycerol, and sodium azide (**ab227670**).



Immunohistochemistry (Formalin/PFA-fixed paraffin-embedded sections) - Anti-CD276 antibody [SP206]
 - Low endotoxin, Azide free (ab246794)

Formalin-fixed, paraffin-embedded human colon adenocarcinoma tissue stained for CD276 with **ab227670** at 1/100 dilution in immunohistochemical analysis.

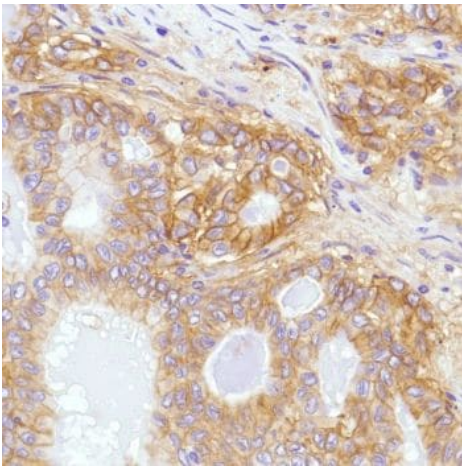
This data was developed using the same antibody clone in a different buffer formulation containing PBS, BSA, glycerol, and sodium azide (**ab227670**).



Immunohistochemistry (Formalin/PFA-fixed paraffin-embedded sections) - Anti-CD276 antibody [SP206]
- Low endotoxin, Azide free (ab246794)

Formalin-fixed, paraffin-embedded human colon tissue stained for CD276 with **ab227670** at 1/100 dilution in immunohistochemical analysis.

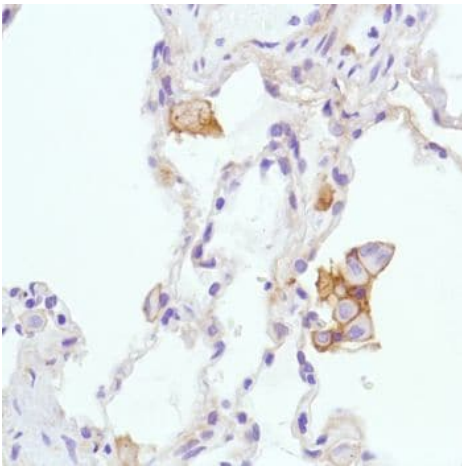
This data was developed using the same antibody clone in a different buffer formulation containing PBS, BSA, glycerol, and sodium azide (**ab227670**).



Immunohistochemistry (Formalin/PFA-fixed paraffin-embedded sections) - Anti-CD276 antibody [SP206]
- Low endotoxin, Azide free (ab246794)

Formalin-fixed, paraffin-embedded human lung adenocarcinoma tissue stained for CD276 with **ab227670** at 1/100 dilution in immunohistochemical analysis.

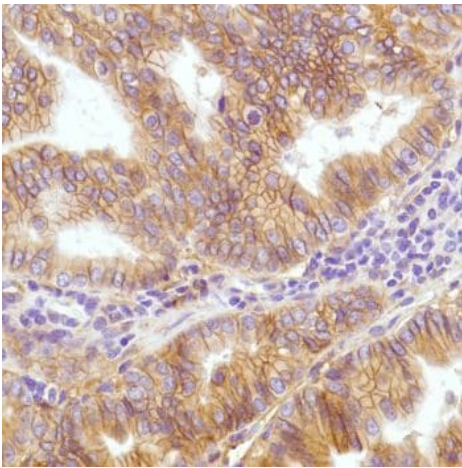
This data was developed using the same antibody clone in a different buffer formulation containing PBS, BSA, glycerol, and sodium azide (**ab227670**).



Immunohistochemistry (Formalin/PFA-fixed paraffin-embedded sections) - Anti-CD276 antibody [SP206]
- Low endotoxin, Azide free (ab246794)

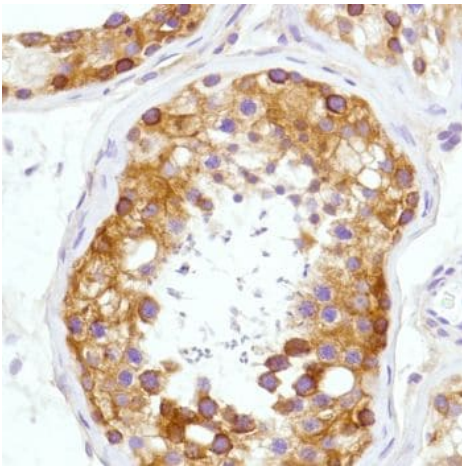
Formalin-fixed, paraffin-embedded human lung tissue stained for CD276 with **ab227670** at 1/100 dilution in immunohistochemical analysis.

This data was developed using the same antibody clone in a different buffer formulation containing PBS, BSA, glycerol, and sodium azide (**ab227670**).



Immunohistochemistry (Formalin/PFA-fixed paraffin-embedded sections) - Anti-CD276 antibody [SP206]
- Low endotoxin, Azide free (ab246794)

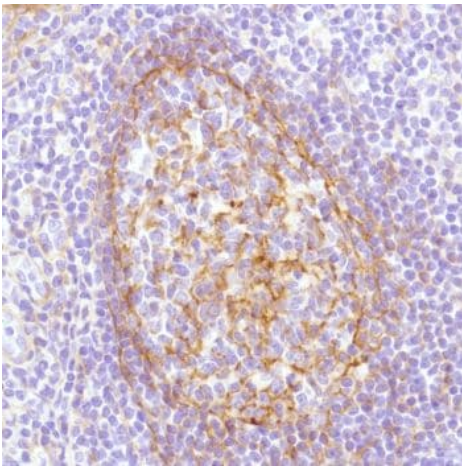
Formalin-fixed, paraffin-embedded human stomach adenocarcinoma tissue stained for CD276 with **ab227670** at 1/100 dilution in immunohistochemical analysis.



Immunohistochemistry (Formalin/PFA-fixed paraffin-embedded sections) - Anti-CD276 antibody [SP206]
 - Low endotoxin, Azide free (ab246794)

Formalin-fixed, paraffin-embedded human testis tissue stained for CD276 with **ab227670** at 1/100 dilution in immunohistochemical analysis.

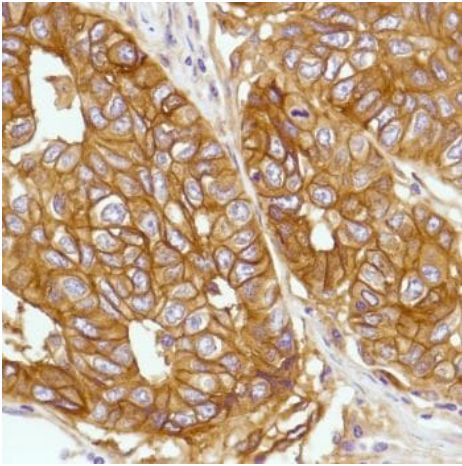
This data was developed using the same antibody clone in a different buffer formulation containing PBS, BSA, glycerol, and sodium azide (**ab227670**).



Immunohistochemistry (Formalin/PFA-fixed paraffin-embedded sections) - Anti-CD276 antibody [SP206]
 - Low endotoxin, Azide free (ab246794)

Formalin-fixed, paraffin-embedded human tonsil tissue stained for CD276 with **ab227670** at 1/100 dilution in immunohistochemical analysis.

This data was developed using the same antibody clone in a different buffer formulation containing PBS, BSA, glycerol, and sodium azide (**ab227670**).

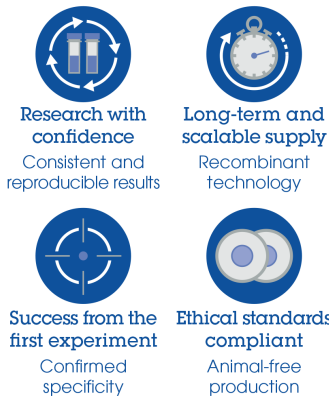


Formalin-fixed, paraffin-embedded human lung SCCa tissue stained for CD276 with **ab227670** at 1/100 dilution in immunohistochemical analysis.

This data was developed using the same antibody clone in a different buffer formulation containing PBS, BSA, glycerol, and sodium azide (**ab227670**).

Immunohistochemistry (Formalin/PFA-fixed paraffin-embedded sections) - Anti-CD276 antibody [SP206]
- Low endotoxin, Azide free (ab246794)

Why choose a recombinant antibody?



Anti-CD276 antibody [SP206] - Low endotoxin, Azide free (ab246794)

Please note: All products are "FOR RESEARCH USE ONLY. NOT FOR USE IN DIAGNOSTIC PROCEDURES"

Our Abpromise to you: Quality guaranteed and expert technical support

- Replacement or refund for products not performing as stated on the datasheet
- Valid for 12 months from date of delivery
- Response to your inquiry within 24 hours
- We provide support in Chinese, English, French, German, Japanese and Spanish
- Extensive multi-media technical resources to help you

- We investigate all quality concerns to ensure our products perform to the highest standards

If the product does not perform as described on this datasheet, we will offer a refund or replacement. For full details of the Abpromise, please visit <https://www.abcam.co.jp/abpromise> or contact our technical team.

Terms and conditions

- Guarantee only valid for products bought direct from Abcam or one of our authorized distributors