


Anti-CD276 antibody [SP206] ab227670

KO 評価済 リコンビナント RabMAb

★★★★★ [1 Abreviews](#) [3 References](#) [画像数 17](#)

製品の概要

製品名	Anti-CD276 antibody [SP206]
製品の詳細	Rabbit monoclonal [SP206] to CD276
由来種	Rabbit
アプリケーション	適用あり: WB, IHC-P
種交差性	交差種: Human 交差が予測される動物種: Mouse, Rat 
免疫原	Synthetic peptide. This information is proprietary to Abcam and/or its suppliers.
ポジティブ・コントロール	WB: HeLa, LNCaP and HEK-293T cell lysate. IHC-P: Human tonsil, testis, stomach, stomach adenocarcinoma, lung, lung adenocarcinoma, lung SSCa, colon, colon adenocarcinoma, breast and breast ductal carcinoma tissues.
特記事項	<p>This product is a recombinant monoclonal antibody, which offers several advantages including:</p> <ul style="list-style-type: none">- High batch-to-batch consistency and reproducibility- Improved sensitivity and specificity- Long-term security of supply- Animal-free production <p>For more information see here.</p> <p>Our RabMAb[®] technology is a patented hybridoma-based technology for making rabbit monoclonal antibodies. For details on our patents, please refer to RabMAb[®] patents.</p> <p>This product is FOR RESEARCH USE ONLY. For commercial use, please contact partnerships@abcam.com.</p>

製品の特性

製品の状態	Liquid
保存方法	Shipped at 4°C. Store at +4°C short term (1-2 weeks). Upon delivery aliquot. Store at -20°C long term. Avoid freeze / thaw cycle.
バッファー	pH: 7.20 Preservative: 0.1% Sodium azide Constituents: 1% BSA, PBS

精製度	Protein A purified
ポリ/モノ	モノクローナル
クローン名	SP206
アイソタイプ	IgG

アプリケーション

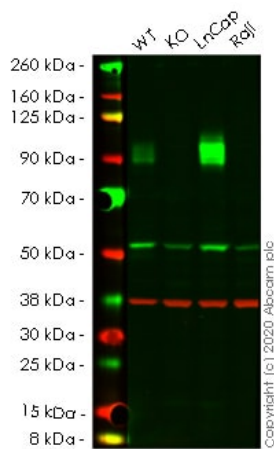
The Abpromise guarantee Abpromise保証は、次のテスト済みアプリケーションにおけるab227670の使用に適用されます
 アプリケーションノートには、推奨の開始希釈率がありますが、適切な希釈率につきましてはご検討ください。

アプリケーション	Abreviews	特記事項
WB		1/400. Predicted molecular weight: 57 kDa. Primary antibody incubation for 1 hour at room temperature.
IHC-P		1/100. Perform heat mediated antigen retrieval with citrate buffer pH 6 before commencing with IHC staining protocol. Primary antibody incubation for 10 minutes at room temperature.

ターゲット情報

機能	May participate in the regulation of T-cell-mediated immune response. May play a protective role in tumor cells by inhibiting natural-killer mediated cell lysis as well as a role of marker for detection of neuroblastoma cells. May be involved in the development of acute and chronic transplant rejection and in the regulation of lymphocytic activity at mucosal surfaces. Could also play a key role in providing the placenta and fetus with a suitable immunological environment throughout pregnancy. Both isoform 1 and isoform 2 appear to be redundant in their ability to modulate CD4 T-cell responses. Isoform 2 is shown to enhance the induction of cytotoxic T-cells and selectively stimulates interferon gamma production in the presence of T-cell receptor signaling.
組織特異性	Ubiquitous but not detectable in peripheral blood lymphocytes or granulocytes. Weakly expressed in resting monocytes. Expressed in dendritic cells derived from monocytes. Expressed in epithelial cells of sinonasal tissue. Expressed in extravillous trophoblast cells and Hofbauer cells of the first trimester placenta and term placenta.
配列類似性	Belongs to the immunoglobulin superfamily. BTN/MOG family. Contains 2 Ig-like C2-type (immunoglobulin-like) domains. Contains 2 Ig-like V-type (immunoglobulin-like) domains.
細胞内局在	Membrane.

画像



Western blot - Anti-CD276 antibody [SP206] (ab227670)

All lanes : Anti-CD276 antibody [SP206] (ab227670) at 1/400 dilution

Lane 1 : Wild-type HeLa cell lysate

Lane 2 : CD276 knockout HeLa cell lysate

Lane 3 : LNCaP cell lysate

Lane 4 : Raji cell lysate

Lysates/proteins at 20 µg per lane.

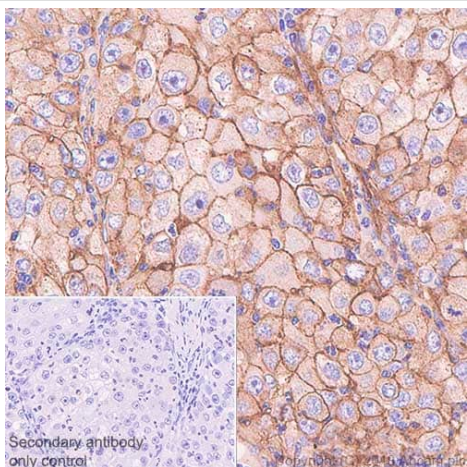
Performed under reducing conditions.

Predicted band size: 57 kDa

Observed band size: 90-110 kDa

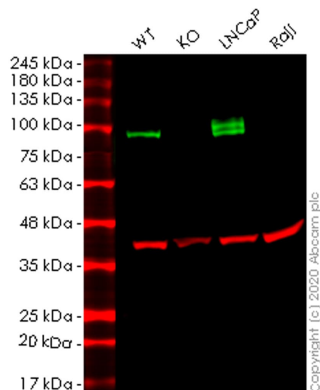
Lanes 1-4: Merged signal (red and green). Green - ab227670 observed at 90-110 kDa. Red - Anti-GAPDH antibody [6C5] - Loading Control ([ab8245](#)) observed at 37 kDa.

ab227670 was shown to react with CD276 antigen in wild-type HeLa cells in western blot. Loss of signal was observed when knockout cell line [ab261756](#) (knockout cell lysate [ab257098](#)) was used. Wild-type HeLa and CD276 knockout HeLa cell lysates were subjected to SDS-PAGE. Membrane was blocked for 1 hour at room temperature in 0.1% TBST with 3% non-fat dried milk. ab227670 and Anti-GAPDH antibody [6C5] - Loading Control ([ab8245](#)) overnight at 4°C at a 1 in 400 dilution and a 1 in 20000 dilution respectively. Blots were developed with Goat anti-Rabbit IgG H&L (IRDye®800CW) preadsorbed ([ab216773](#)) and Goat anti-Mouse IgG H&L (IRDye®680RD) preadsorbed ([ab216776](#)) secondary antibodies at 1 in 20000 dilution for 1 hour at room temperature before imaging.



Immunohistochemistry (Formalin/PFA-fixed paraffin-embedded sections) - Anti-CD276 antibody [SP206] (ab227670)

Immunohistochemistry (Formalin/PFA-fixed paraffin-embedded sections) analysis of human lung carcinoma tissue sections labeling CD276 with ab227670 at 1/100 dilution (2.29 µg/ml). Heat mediated antigen retrieval with citrate buffer (pH 6.0, epitope retrieval solution 1) for 10mins. Rabbit specific IHC polymer detection kit HRP/DAB (**ab209101**) was used as the secondary antibody. Hematoxylin was used as a counterstain. Mainly membranous staining on the human lung carcinoma, performed on a Leica Biosystems BOND™ RX instrument. The section was incubated with ab227670 for 10 mins at room temperature.



Western blot - Anti-CD276 antibody [SP206] (ab227670)

All lanes : Anti-CD276 antibody [SP206] (ab227670) at 1/1000 dilution

Lane 1 : Wild-type HEK293T cell lysate

Lane 2 : CD276 knockout HEK293T cell lysate

Lane 3 : LNCaP cell lysate

Lane 4 : Raji cell lysate

Lysates/proteins at 20 µg per lane.

Secondary

All lanes : Goat anti-Rabbit IgG H&L (IRDye® 800CW) preadsorbed (**ab216773**) at 1/10000 dilution

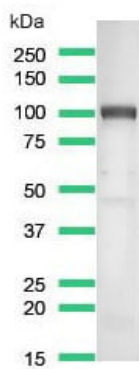
Predicted band size: 57 kDa

Observed band size: 90-110 kDa

Lanes 1-4: Merged signal (red and green). Green - ab227670 observed at 90-110 kDa. Red - loading control **ab8245** observed at 36 kDa.

ab227670 Anti-CD276 antibody [SP206] was shown to specifically

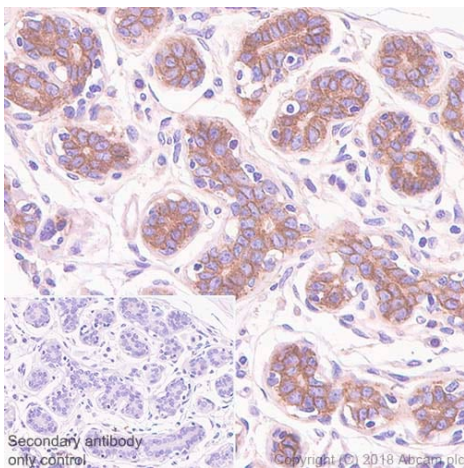
react with CD276 in wild-type HEK293T cells. Loss of signal was observed when knockout cell line [ab266658](#) (knockout cell lysate [ab257097](#)) was used. Wild-type and CD276 knockout samples were subjected to SDS-PAGE. ab227670 and Anti-GAPDH antibody [6C5] - Loading Control ([ab8245](#)) were incubated overnight at 4°C at 1 in 1000 dilution and 1 in 20000 dilution respectively. Blots were developed with Goat anti-Rabbit IgG H&L (IRDye® 800CW) preadsorbed ([ab216773](#)) and Goat anti-Mouse IgG H&L (IRDye® 680RD) preadsorbed ([ab216776](#)) secondary antibodies at 1 in 20000 dilution for 1 hour at room temperature before imaging.



Western blot - Anti-CD276 antibody [SP206] (ab227670)

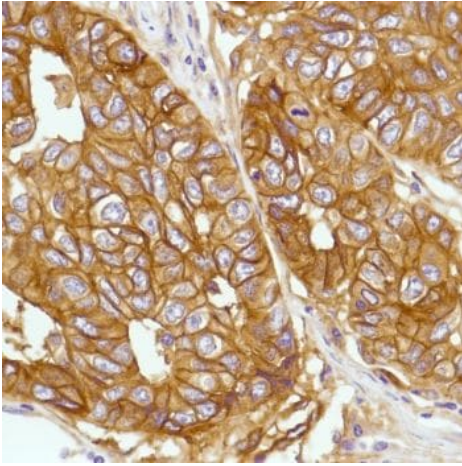
Anti-CD276 antibody [SP206] (ab227670) at 1/400 dilution + HEK-293T (human epithelial cell line from embryonic kidney transformed with large T antigen) cell lysate

Predicted band size: 57 kDa



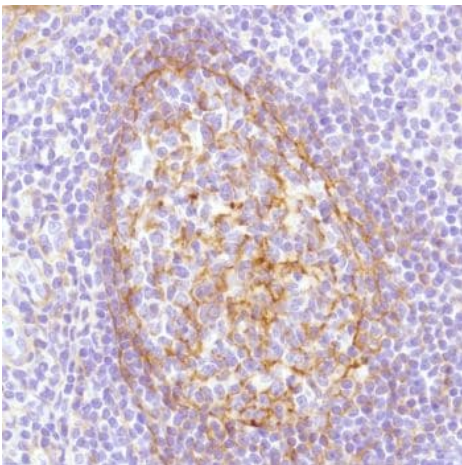
Immunohistochemistry (Formalin/PFA-fixed paraffin-embedded sections) - Anti-CD276 antibody [SP206] (ab227670)

Immunohistochemistry (Formalin/PFA-fixed paraffin-embedded sections) analysis of Human breast tissue sections labeling CD276 with ab227670 at 1/100 dilution (2.29 µg/ml). Heat mediated antigen retrieval with citrate buffer (pH 6.0, epitope retrieval solution 1) for 10mins. Rabbit specific IHC polymer detection kit HRP/DAB ([ab209101](#)) was used as the secondary antibody. Hematoxylin was used as a counterstain. Mainly membranous staining on the human breast, performed on a Leica Biosystems BOND™ RX instrument. The section was incubated with ab227670 for 10 mins at room temperature.



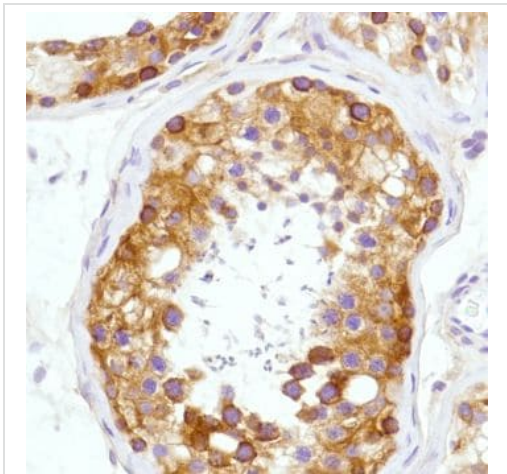
Formalin-fixed, paraffin-embedded human lung SCCa tissue stained for CD276 with ab227670 at 1/100 dilution in immunohistochemical analysis.

Immunohistochemistry (Formalin/PFA-fixed paraffin-embedded sections) - Anti-CD276 antibody [SP206] (ab227670)



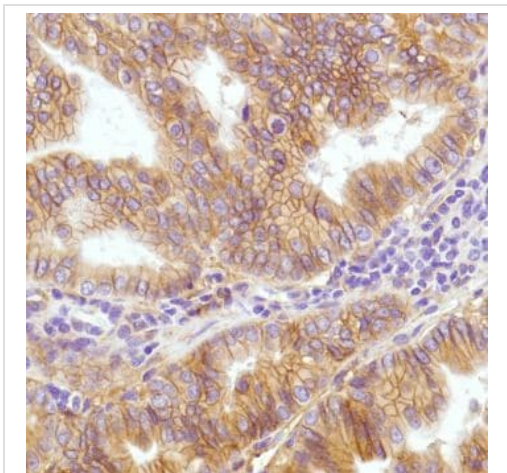
Formalin-fixed, paraffin-embedded human tonsil tissue stained for CD276 with ab227670 at 1/100 dilution in immunohistochemical analysis.

Immunohistochemistry (Formalin/PFA-fixed paraffin-embedded sections) - Anti-CD276 antibody [SP206] (ab227670)



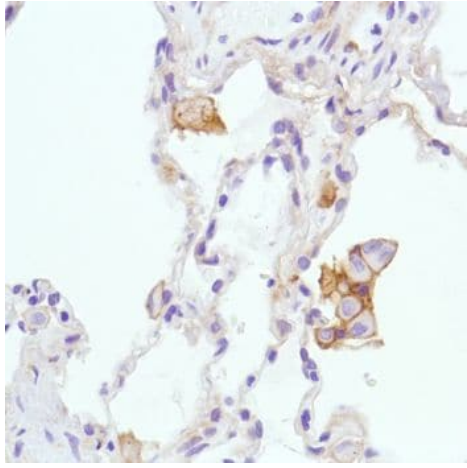
Formalin-fixed, paraffin-embedded human testis tissue stained for CD276 with ab227670 at 1/100 dilution in immunohistochemical analysis.

Immunohistochemistry (Formalin/PFA-fixed paraffin-embedded sections) - Anti-CD276 antibody [SP206] (ab227670)



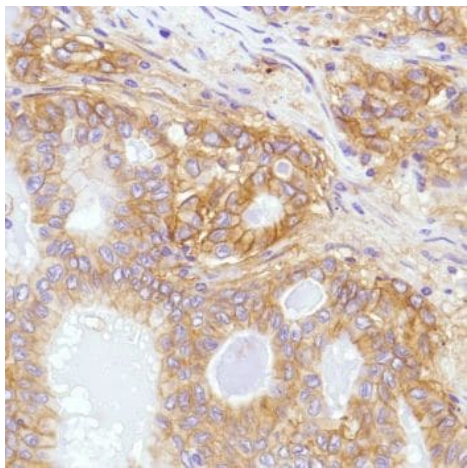
Formalin-fixed, paraffin-embedded human stomach adenocarcinoma tissue stained for CD276 with ab227670 at 1/100 dilution in immunohistochemical analysis.

Immunohistochemistry (Formalin/PFA-fixed paraffin-embedded sections) - Anti-CD276 antibody [SP206] (ab227670)



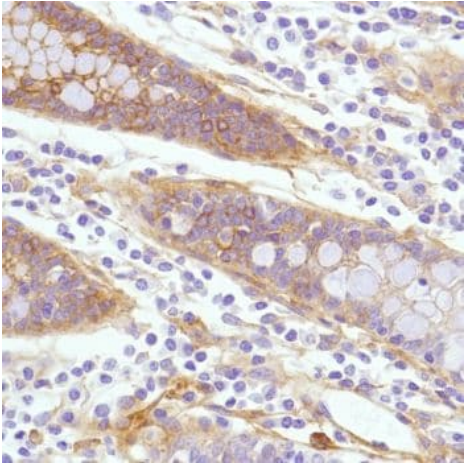
Formalin-fixed, paraffin-embedded human lung tissue stained for CD276 with ab227670 at 1/100 dilution in immunohistochemical analysis.

Immunohistochemistry (Formalin/PFA-fixed paraffin-embedded sections) - Anti-CD276 antibody [SP206] (ab227670)



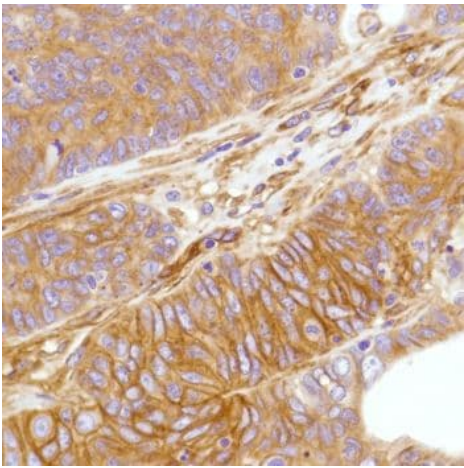
Formalin-fixed, paraffin-embedded human lung adenocarcinoma tissue stained for CD276 with ab227670 at 1/100 dilution in immunohistochemical analysis.

Immunohistochemistry (Formalin/PFA-fixed paraffin-embedded sections) - Anti-CD276 antibody [SP206] (ab227670)



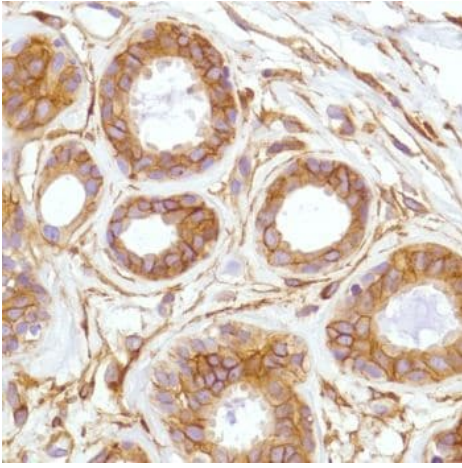
Formalin-fixed, paraffin-embedded human colon tissue stained for CD276 with ab227670 at 1/100 dilution in immunohistochemical analysis.

Immunohistochemistry (Formalin/PFA-fixed paraffin-embedded sections) - Anti-CD276 antibody [SP206] (ab227670)



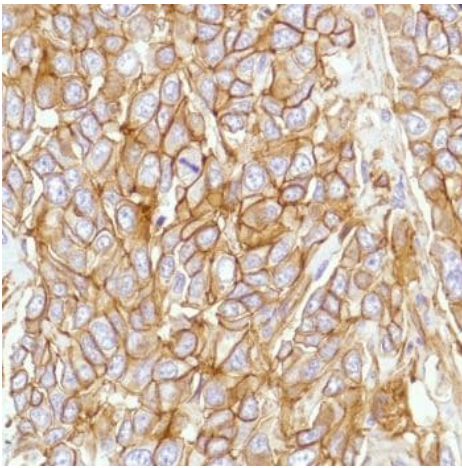
Formalin-fixed, paraffin-embedded human colon adenocarcinoma tissue stained for CD276 with ab227670 at 1/100 dilution in immunohistochemical analysis.

Immunohistochemistry (Formalin/PFA-fixed paraffin-embedded sections) - Anti-CD276 antibody [SP206] (ab227670)



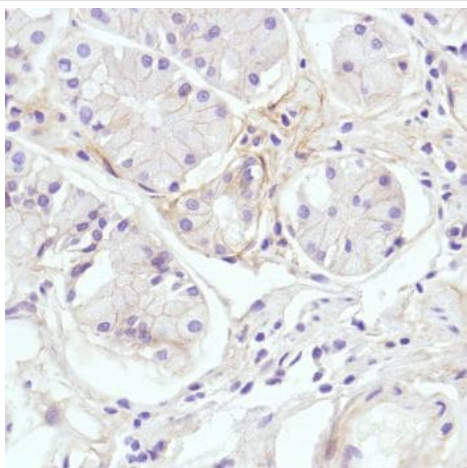
Immunohistochemistry (Formalin/PFA-fixed paraffin-embedded sections) - Anti-CD276 antibody [SP206] (ab227670)

Formalin-fixed, paraffin-embedded human breast tissue stained for CD276 with ab227670 at 1/100 dilution in immunohistochemical analysis.



Immunohistochemistry (Formalin/PFA-fixed paraffin-embedded sections) - Anti-CD276 antibody [SP206] (ab227670)

Formalin-fixed, paraffin-embedded human breast ductal carcinoma tissue stained for CD276 with ab227670 at 1/100 dilution in immunohistochemical analysis.



Formalin-fixed, paraffin-embedded human stomach tissue stained for CD276 with ab227670 at 1/100 dilution in immunohistochemical analysis.

Immunohistochemistry (Formalin/PFA-fixed paraffin-embedded sections) - Anti-CD276 antibody [SP206] (ab227670)

Why choose a recombinant antibody?



Research with confidence
Consistent and reproducible results



Long-term and scalable supply
Recombinant technology



Success from the first experiment
Confirmed specificity



Ethical standards compliant
Animal-free production

Anti-CD276 antibody [SP206] (ab227670)

Please note: All products are "FOR RESEARCH USE ONLY. NOT FOR USE IN DIAGNOSTIC PROCEDURES"

Our Abpromise to you: Quality guaranteed and expert technical support

- Replacement or refund for products not performing as stated on the datasheet
- Valid for 12 months from date of delivery
- Response to your inquiry within 24 hours
- We provide support in Chinese, English, French, German, Japanese and Spanish
- Extensive multi-media technical resources to help you
- We investigate all quality concerns to ensure our products perform to the highest standards

If the product does not perform as described on this datasheet, we will offer a refund or replacement. For full details of the Abpromise, please visit <https://www.abcam.co.jp/abpromise> or contact our technical team.

Terms and conditions

- Guarantee only valid for products bought direct from Abcam or one of our authorized distributors