

Anti-CD23 antibody [SP163] ab135386

リコンビナント **RabMAb**

画像数 4

製品の概要

製品名	Anti-CD23 antibody [SP163]
製品の詳細	Rabbit monoclonal [SP163] to CD23
由来種	Rabbit
アプリケーション	適用あり: ICC/IF, Flow Cyt, IHC-P 適用なし: WB
種交差性	交差種: Human
免疫原	Recombinant fragment within Human CD23 aa 1-250. The exact sequence is proprietary. Database link: P06734
ポジティブ・コントロール	Flow Cyt: Raji cells. WB: Raji cell lysate. IHC-P: Human tonsil tissue. ICC/IF: Raji cells
特記事項	This product is a recombinant monoclonal antibody, which offers several advantages including: - High batch-to-batch consistency and reproducibility - Improved sensitivity and specificity - Long-term security of supply - Animal-free production For more information see here . This product is FOR RESEARCH USE ONLY. For commercial use, please contact partnerships@abcam.com.

製品の特性

製品の状態	Liquid
保存方法	Shipped at 4°C. Upon delivery aliquot and store at -20°C. Avoid freeze / thaw cycles.
バッファー	pH: 7.60 Preservative: 0.1% Sodium azide Constituents: PBS, 1% BSA
精製度	Protein A/G purified
特記事項(精製)	Purified from TCS by protein A/G.
ポリ/モノ	モノクローナル
クローン名	SP163

アプリケーション

The Abpromise guarantee **Abpromise保証は、次のテスト済みアプリケーションにおけるab135386の使用に適用されず**
 アプリケーションノートには、推奨の開始希釈率がありますが、適切な希釈率につきましてはご確認ください。

アプリケーション	Abreviews	特記事項
ICC/IF		1/25.
Flow Cyt		1/100. ab172730 - Rabbit monoclonal IgG, is suitable for use as an isotype control with this antibody.
IHC-P		1/50. Perform heat mediated antigen retrieval with citrate buffer pH 6 before commencing with IHC staining protocol.

追加情報 Is unsuitable for WB.

ターゲット情報

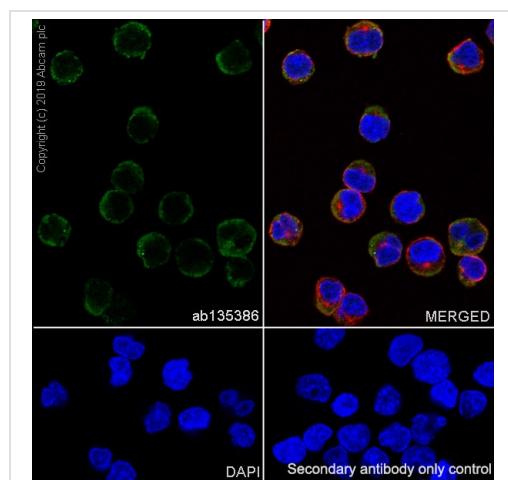
機能 This receptor has essential roles in the regulation of IgE production and in the differentiation of B-cells (it is a B-cell-specific antigen).

配列類似性 Contains 1 C-type lectin domain.

翻訳後修飾 N- and O-glycosylated.

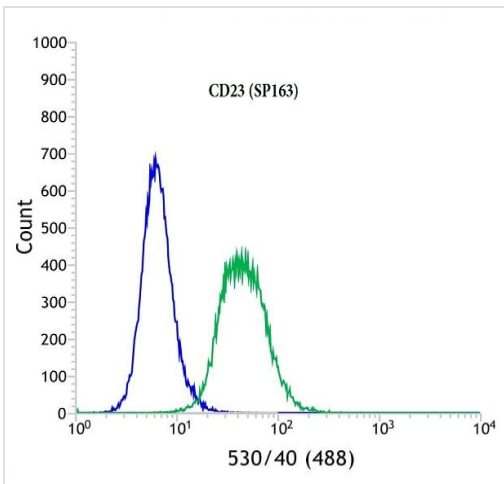
細胞内局在 Cell membrane. Secreted. Also exists as a soluble excreted form.

画像



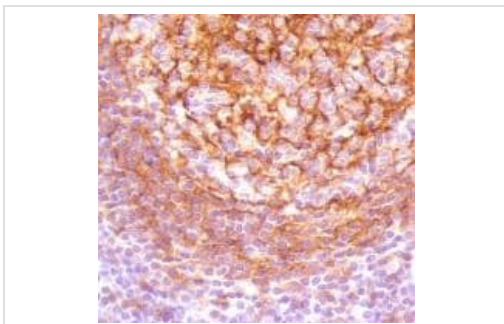
Immunocytochemistry/ Immunofluorescence analysis of Raji (human Burkitt's lymphoma B lymphocyte) cells labeling CD23 with purified ab135386 (7.48 µg/ml). Cells were fixed in 4% paraformaldehyde and permeabilized with 0.1% Triton X-100. Cells were counterstained with Ab195889 Anti-alpha Tubulin antibody [DM1A] - Microtubule Marker (Alexa Fluor® 594) 1/200 (2.5 µg/ml). Goat anti rabbit IgG (Alexa Fluor® 488, **ab150077**) was used as the secondary antibody at 1/1000 (2 µg/ml) dilution. DAPI (blue) was used as nuclear counterstain. PBS instead of the primary antibody was used as the secondary antibody only control.

Immunocytochemistry/ Immunofluorescence - Anti-CD23 antibody [SP163] (ab135386)



Flow Cytometry - Anti-CD23 antibody [SP163]
(ab135386)





Flow cytometric analysis of rabbit anti-CD23 (SP163) antibody ab135386 (1/100) in Raji (Human Burkitt's lymphoma cell line) cells (green) compared to negative control of rabbit IgG (blue).



Immunohistochemistry (Formalin/PFA-fixed paraffin-embedded sections) - Anti-CD23 antibody [SP163]
(ab135386)

Immunohistochemical analysis of paraffin embedded human tonsil tissue labeling CD23 with ab135386 antibody at a dilution of 1/50.

Why choose a recombinant antibody?

 <p>Research with confidence Consistent and reproducible results</p>	 <p>Long-term and scalable supply Recombinant technology</p>
 <p>Success from the first experiment Confirmed specificity</p>	 <p>Ethical standards compliant Animal-free production</p>

Anti-CD23 antibody [SP163] (ab135386)

Please note: All products are "FOR RESEARCH USE ONLY. NOT FOR USE IN DIAGNOSTIC PROCEDURES"

Our Abpromise to you: Quality guaranteed and expert technical support

- Replacement or refund for products not performing as stated on the datasheet
- Valid for 12 months from date of delivery
- Response to your inquiry within 24 hours

- We provide support in Chinese, English, French, German, Japanese and Spanish
- Extensive multi-media technical resources to help you
- We investigate all quality concerns to ensure our products perform to the highest standards

If the product does not perform as described on this datasheet, we will offer a refund or replacement. For full details of the Abpromise, please visit <https://www.abcam.co.jp/abpromise> or contact our technical team.

Terms and conditions

- Guarantee only valid for products bought direct from Abcam or one of our authorized distributors