

Anti-CD22 antibody [BLCAM/1796] ab223801

画像数 4

製品の概要

製品名	Anti-CD22 antibody [BLCAM/1796]
製品の詳細	Mouse monoclonal [BLCAM/1796] to CD22
由来種	Mouse
アプリケーション	適用あり: ICC, Flow Cyt, WB, Protein Array
種交差性	交差種: Human
免疫原	Recombinant fragment within Human CD22 aa 52-178. The exact sequence is proprietary. Database link: P20273
ポジティブ・コントロール	ICC and Flow Cyt: Ramos cells; WB: Raji cell lysate.
特記事項	<p>The Life Science industry has been in the grips of a reproducibility crisis for a number of years. Abcam is leading the way in addressing this with our range of recombinant monoclonal antibodies and knockout edited cell lines for gold-standard validation. Please check that this product meets your needs before purchasing.</p> <p>If you have any questions, special requirements or concerns, please send us an inquiry and/or contact our Support team ahead of purchase. Recommended alternatives for this product can be found below, along with publications, customer reviews and Q&As</p>

製品の特性

製品の状態	Liquid
保存方法	Shipped at 4°C. Store at +4°C short term (1-2 weeks). Upon delivery aliquot. Store at -20°C long term. Avoid freeze / thaw cycle.
バッファー	pH: 7.2 Preservative: 0.05% Sodium azide Constituents: 0.05% BSA, PBS
精製度	Protein A/G purified
特記事項(精製)	ab223801 was purified from bioreactor concentrate by Protein A/G.
ポリ/モノ	モノクローナル
クローン名	BLCAM/1796
アイソタイプ	IgG1
軽鎖の種類	kappa

アプリケーション

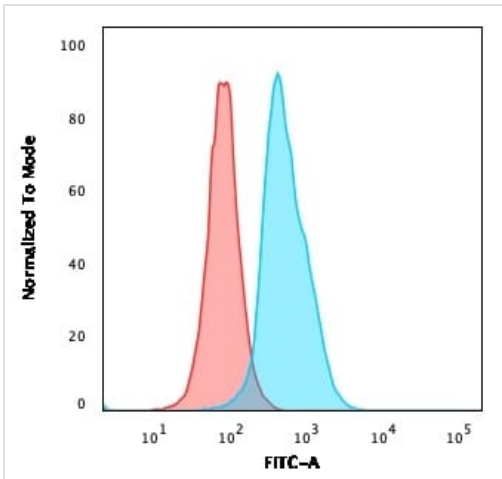
The Abpromise guarantee Abpromise保証は、次のテスト済みアプリケーションにおけるab223801の使用に適用されます
アプリケーションノートには、推奨の開始希釈率がありますが、適切な希釈率につきましてはご検討ください。

アプリケーション	Abreviews	特記事項
ICC		Use a concentration of 1 - 2 µg/ml.
Flow Cyt		Use 1-2µg for 10 ⁶ cells.
WB		Use a concentration of 1 - 2 µg/ml. Detects a band of approximately 130-140 kDa (predicted molecular weight: 95 kDa).
Protein Array		Use at an assay dependent concentration.

ターゲット情報

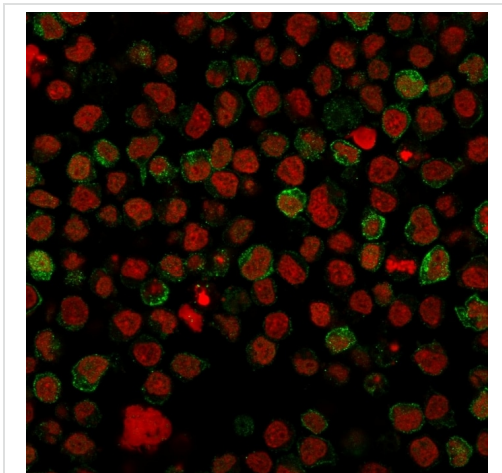
機能	Mediates B-cell B-cell interactions. May be involved in the localization of B-cells in lymphoid tissues. Binds sialylated glycoproteins; one of which is CD45. Preferentially binds to alpha-2,6-linked sialic acid. The sialic acid recognition site can be masked by cis interactions with sialic acids on the same cell surface. Upon ligand induced tyrosine phosphorylation in the immune response seems to be involved in regulation of B-cell antigen receptor signaling. Plays a role in positive regulation through interaction with Src family tyrosine kinases and may also act as an inhibitory receptor by recruiting cytoplasmic phosphatases via their SH2 domains that block signal transduction through dephosphorylation of signaling molecules.
組織特異性	B-lymphocytes.
配列類似性	Belongs to the immunoglobulin superfamily. SIGLEC (sialic acid binding Ig-like lectin) family. Contains 6 Ig-like C2-type (immunoglobulin-like) domains. Contains 1 Ig-like V-type (immunoglobulin-like) domain.
ドメイン	Contains 4 copies of a cytoplasmic motif that is referred to as the immunoreceptor tyrosine-based inhibitor motif (ITIM). This motif is involved in modulation of cellular responses. The phosphorylated ITIM motif can bind the SH2 domain of several SH2-containing phosphatases.
翻訳後修飾	Phosphorylation of Tyr-762, Tyr-807 and Tyr-822 are involved in binding to SYK, GRB2 and SYK, respectively. Phosphorylation of Tyr-842 is involved in binding to SYK, PLCG2 and PIK3R1/PIK3R2. Phosphorylated on tyrosine residues by LYN.
細胞内局在	Cell membrane.

画像



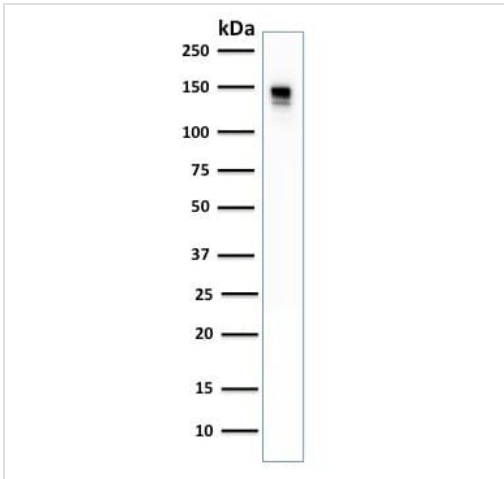
Flow Cytometry - Anti-CD22 antibody [BLCAM/1796] (ab223801)

Flow Cytometry analysis of Ramos (human Burkitt's lymphoma cell line) cells labeling CD22 with ab223801 at 2 $\mu\text{g}/10^6$ cells followed by goat anti-Mouse IgG-CF488 (Blue); Isotype Control (Red).



Immunocytochemistry - Anti-CD22 antibody [BLCAM/1796] (ab223801)

Immunocytochemistry analysis of paraformaldehyde-fixed Ramos (human Burkitt's lymphoma cell line) cells labeling CD22 with ab223801 at 2 $\mu\text{g}/\text{mL}$ followed by goat anti-Mouse IgG-CF488 (Green). Nuclei are labeled with Reddot (Red).



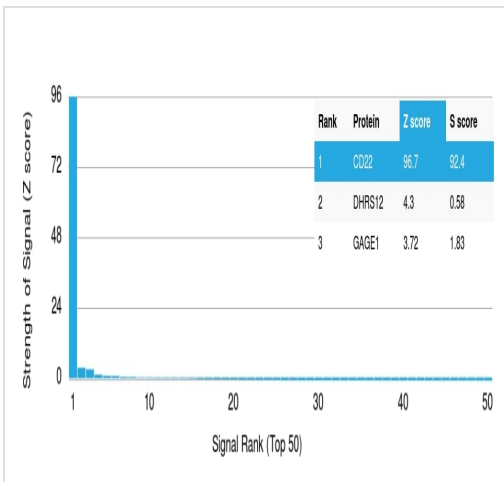
Western blot - Anti-CD22 antibody [BLCAM/1796] (ab223801)

Anti-CD22 antibody [BLCAM/1796] (ab223801) at 2 µg/ml + Raji (human Burkitt's lymphoma cell line) whole cell lysate

Predicted band size: 95 kDa

Observed band size: 140 kDa

ab223801 recognizes a protein of 130-140kDa, identified as CD22.



Protein Array - Anti-CD22 antibody [BLCAM/1796] (ab223801)

ab223801 was tested in protein array against over 19000 different full-length human proteins.

Z- and S- Score: The Z-score represents the strength of a signal that a monoclonal antibody (MAB) (in combination with a fluorescently-tagged anti-IgG secondary antibody) produces when binding to a particular protein on the HuProt™ array. Z-scores are described in units of standard deviations (SD's) above the mean value of all signals generated on that array. If targets on HuProt™ are arranged in descending order of the Z-score, the S-score is the difference (also in units of SD's) between the Z-score. S-score therefore represents the relative target specificity of a MAB to its intended target.

A MAB is specific to its intended target if the MAB has an S-score of at least 2.5. For example, if a MAB binds to protein X with a Z-score of 43 and to protein Y with a Z-score of 14, then the S-score for the binding of that MAB to protein X is equal to 29.

Please note: All products are "FOR RESEARCH USE ONLY. NOT FOR USE IN DIAGNOSTIC PROCEDURES"

Our Abpromise to you: Quality guaranteed and expert technical support

- Replacement or refund for products not performing as stated on the datasheet
- Valid for 12 months from date of delivery
- Response to your inquiry within 24 hours
- We provide support in Chinese, English, French, German, Japanese and Spanish
- Extensive multi-media technical resources to help you
- We investigate all quality concerns to ensure our products perform to the highest standards

If the product does not perform as described on this datasheet, we will offer a refund or replacement. For full details of the Abpromise,

please visit <https://www.abcam.co.jp/abpromise> or contact our technical team.

Terms and conditions

- Guarantee only valid for products bought direct from Abcam or one of our authorized distributors