

Anti-CD21 antibody [1F8], prediluted ab7290

画像数 1

製品の概要

製品名	Anti-CD21 antibody [1F8], prediluted
製品の詳細	Mouse monoclonal [1F8] to CD21, prediluted
由来種	Mouse
特異性	This antibody reacts with CD21 antigen of MW 145 kD, present on the surface of mature B cells. The antigen is present at high density on follicular dendritic cells. CD21 is involved in transmitting growth-promoting signals to the interior of the B cell.
アプリケーション	適用あり: IHC-P
種交差性	交差種: Human
免疫原	Full length native protein (purified) corresponding to Human CD21. Purified receptor for the C3d fragment of the third complement component CR2, from human tonsil.
ポジティブ・コントロール	Tonsil.
特記事項	<p>The Life Science industry has been in the grips of a reproducibility crisis for a number of years. Abcam is leading the way in addressing this with our range of recombinant monoclonal antibodies and knockout edited cell lines for gold-standard validation. Please check that this product meets your needs before purchasing.</p> <p>If you have any questions, special requirements or concerns, please send us an inquiry and/or contact our Support team ahead of purchase. Recommended alternatives for this product can be found below, along with publications, customer reviews and Q&As</p>

製品の特性

製品の状態	Liquid
保存方法	Shipped at 4°C. Store at +4°C.
バッファー	<p>pH: 7.3</p> <p>Preservative: 0.1% Sodium azide</p> <p>Constituent: PBS</p>
精製度	Protein A purified
ポリ/モノ	モノクローナル
クローン名	1F8
アイソタイプ	IgG1

アプリケーション

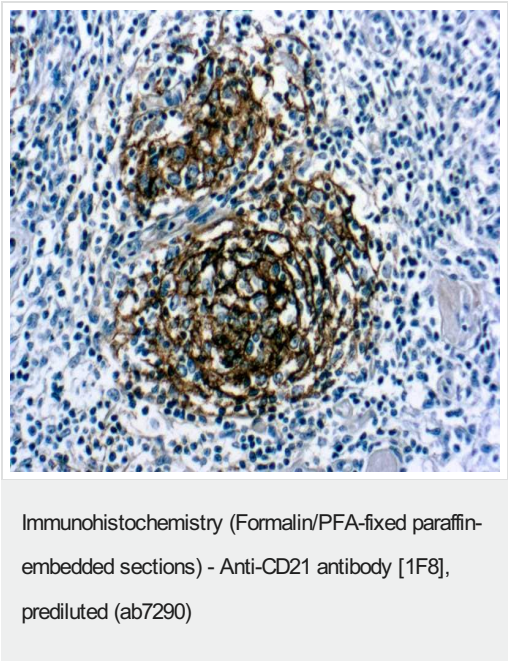
The Abpromise guarantee **Abpromise保証は、** 次のテスト済みアプリケーションにおけるab7290の使用に適用されます
アプリケーションノートには、推奨の開始希釈率がありますが、適切な希釈率につきましてはご検討ください。

アプリケーション	Abreviews	特記事項
IHC-P		1/10 - 1/25.

ターゲット情報

機能	Receptor for complement C3Dd, for the Epstein-Barr virus on human B-cells and T-cells and for HNRPU. Participates in B lymphocytes activation.
組織特異性	Mature B-lymphocytes, T-lymphocytes, pharyngeal epithelial cells, astrocytes and follicular dendritic cells of the spleen.
関連疾患	Genetic variations in CR2 are associated with susceptibility to systemic lupus erythematosus type 9 (SLEB9) [MIM:610927]. Systemic lupus erythematosus (SLE) is a chronic autoimmune disease with a complex genetic basis. SLE is an inflammatory, and often febrile multisystemic disorder of connective tissue characterized principally by involvement of the skin, joints, kidneys, and serosal membranes. It is thought to represent a failure of the regulatory mechanisms of the autoimmune system.
配列類似性	Belongs to the receptors of complement activation (RCA) family. Contains 15 Sushi (CCP/SCR) domains.
細胞内局在	Membrane.

画像



Immunohistochemistry (Formalin/PFA-fixed paraffin-embedded sections) analysis of human tonsil tissue labeling CD21 with ab7290.

Please note: All products are "FOR RESEARCH USE ONLY. NOT FOR USE IN DIAGNOSTIC PROCEDURES"

Our Abpromise to you: Quality guaranteed and expert technical support

- Replacement or refund for products not performing as stated on the datasheet
- Valid for 12 months from date of delivery
- Response to your inquiry within 24 hours
- We provide support in Chinese, English, French, German, Japanese and Spanish
- Extensive multi-media technical resources to help you
- We investigate all quality concerns to ensure our products perform to the highest standards

If the product does not perform as described on this datasheet, we will offer a refund or replacement. For full details of the Abpromise, please visit <https://www.abcam.co.jp/abpromise> or contact our technical team.

Terms and conditions

- Guarantee only valid for products bought direct from Abcam or one of our authorized distributors