

Anti-CD20 antibody [PDR78] ab254189

リコンビナント

画像数 2

製品の概要

製品名	Anti-CD20 antibody [PDR78]
製品の詳細	Mouse monoclonal [PDR78] to CD20
由来種	Mouse
アプリケーション	適用あり: Flow Cyt 適用なし: ICC or IHC-P
種交差性	交差種: Human
免疫原	Tissue, cells or virus. This information is proprietary to Abcam and/or its suppliers.
ポジティブ・コントロール	Flow Cyt: Human peripheral blood mononuclear cells.
特記事項	<p>This antibody clone is manufactured by Abcam. If you require a custom buffer formulation or conjugation for your experiments, please contact orders@abcam.com.</p> <p>This product is a recombinant monoclonal antibody, which offers several advantages including:</p> <ul style="list-style-type: none">- High batch-to-batch consistency and reproducibility- Improved sensitivity and specificity- Long-term security of supply- Animal-free production <p>For more information see here.</p>

製品の特性

製品の状態	Liquid
保存方法	Shipped at 4°C. Store at +4°C short term (1-2 weeks). Upon delivery aliquot. Store at -20°C long term. Avoid freeze / thaw cycle.
バッファー	pH: 7.2 Preservative: 0.01% Sodium azide Constituents: PBS, 0.05% BSA, 40% Glycerol (glycerin, glycerine)
精製度	Protein A purified
ポリ/モノ	モノクローナル
クローン名	PDR78
アイソタイプ	IgG1

アプリケーション

The Abpromise guarantee **Abpromise保証は、** 次のテスト済みアプリケーションにおけるab254189の使用に適用されます
アプリケーションノートには、推奨の開始希釈率がありますが、適切な希釈率につきましてはご検討ください。

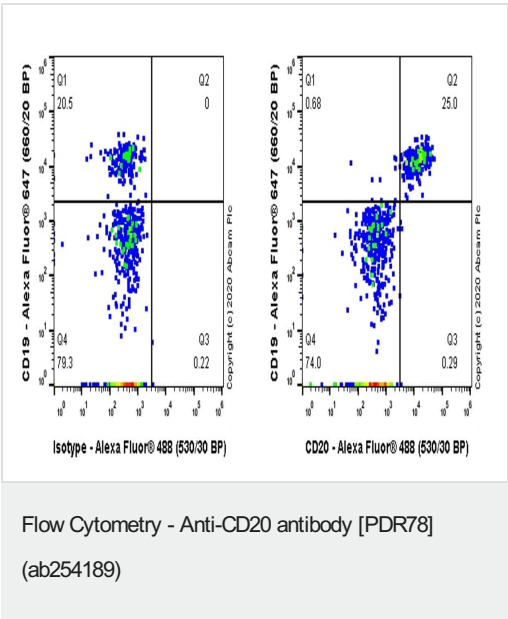
アプリケーション	Abreviews	特記事項
Flow Cyt		Use a concentration of 1.11 µg/ml.

追加情報 Is unsuitable for ICC or IHC-P.

ターゲット情報

機能	This protein may be involved in the regulation of B-cell activation and proliferation.
組織特異性	Expressed on B-cells.
関連疾患	Defects in MS4A1 are the cause of immunodeficiency common variable type 5 (CVID5) [MIM:613495]; also called antibody deficiency due to CD20 defect. CVID5 is a primary immunodeficiency characterized by antibody deficiency, hypogammaglobulinemia, recurrent bacterial infections and an inability to mount an antibody response to antigen. The defect results from a failure of B-cell differentiation and impaired secretion of immunoglobulins; the numbers of circulating B cells is usually in the normal range, but can be low.
配列類似性	Belongs to the MS4A family.
翻訳後修飾	Phosphorylated. Might be functionally regulated by protein kinase(s).
細胞内局在	Membrane.

画像



Flow cytometric analysis of human peripheral blood mononuclear cell (PBMC) cells labelling CD20 with ab254189 at 1.11µg/mL (Right panel) compared with a mouse monoclonal IgG isotype control (Left panel). Goat anti mouse IgG (Alexa Fluor® 488, **ab150113**) at 1/2000 dilution was used as the secondary antibody. Cells were stained with mouse IgG (Left) or ab254189 (Right). Then stained with anti-CD19 conjugated to Alexa Fluor® 647.

Gated on viable cells.

Why choose a recombinant antibody?



Research with confidence
Consistent and reproducible results



Long-term and scalable supply
Recombinant technology



Success from the first experiment
Confirmed specificity



Ethical standards compliant
Animal-free production

Anti-CD20 antibody [PDR78] (ab254189)

Please note: All products are "FOR RESEARCH USE ONLY. NOT FOR USE IN DIAGNOSTIC PROCEDURES"

Our Abpromise to you: Quality guaranteed and expert technical support

- Replacement or refund for products not performing as stated on the datasheet
- Valid for 12 months from date of delivery
- Response to your inquiry within 24 hours
- We provide support in Chinese, English, French, German, Japanese and Spanish
- Extensive multi-media technical resources to help you
- We investigate all quality concerns to ensure our products perform to the highest standards

If the product does not perform as described on this datasheet, we will offer a refund or replacement. For full details of the Abpromise, please visit <https://www.abcam.co.jp/abpromise> or contact our technical team.

Terms and conditions

- Guarantee only valid for products bought direct from Abcam or one of our authorized distributors