

Anti-CD2 antibody [EPR21825] ab219411

リコンビナント **RabMAb**

1 References [画像数 6](#)

製品の概要

製品名	Anti-CD2 antibody [EPR21825]
製品の詳細	Rabbit monoclonal [EPR21825] to CD2
由来種	Rabbit
アプリケーション	適用あり: WB, IHC-P, Flow Cyt, IP
種交差性	交差種: Mouse
免疫原	Recombinant fragment. This information is proprietary to Abcam and/or its suppliers.
ポジティブ・コントロール	WB: Mouse thymus lysate. IHC-P: Mouse thymus and spleen tissues. Flow Cyt: Mouse primary splenocytes. IP: Mouse thymus lysate.
特記事項	<p>This product is a recombinant monoclonal antibody, which offers several advantages including:</p> <ul style="list-style-type: none"> - High batch-to-batch consistency and reproducibility - Improved sensitivity and specificity - Long-term security of supply - Animal-free production <p>For more information see here.</p> <p>Our RabMAb[®] technology is a patented hybridoma-based technology for making rabbit monoclonal antibodies. For details on our patents, please refer to RabMAb[®] patents.</p>

製品の特性

製品の状態	Liquid
保存方法	Shipped at 4°C. Store at +4°C short term (1-2 weeks). Upon delivery aliquot. Store at -20°C long term. Avoid freeze / thaw cycle.
バッファー	<p>pH: 7.2</p> <p>Preservative: 0.01% Sodium azide</p> <p>Constituents: PBS, 40% Glycerol (glycerin, glycerine), 0.05% BSA</p>
精製度	Protein A purified
ポリ/モノ	モノクローナル
クローン名	EPR21825
アイソタイプ	IgG

アプリケーション

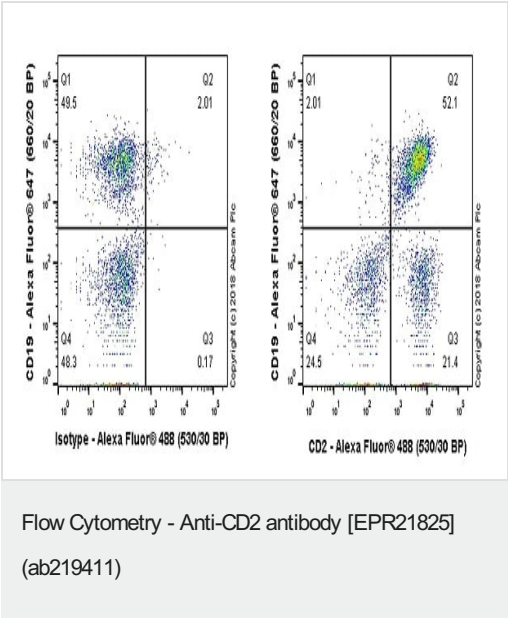
The Abpromise guarantee Abpromise保証は、 次のテスト済みアプリケーションにおけるab219411の使用に適用されます
アプリケーションノートには、推奨の開始希釈率がありますが、適切な希釈率につきましてはご検討ください。

アプリケーション	Abreviews	特記事項
WB		1/1000. Detects a band of approximately 45-58 kDa (predicted molecular weight: 38 kDa).
IHC-P		1/2000. Perform heat mediated antigen retrieval with Tris/EDTA buffer pH 9.0 before commencing with IHC staining protocol.
Flow Cyt		1/500.
IP		1/30.

ターゲット情報

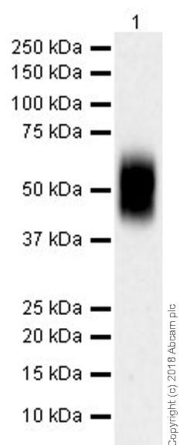
機能	CD2 interacts with lymphocyte function-associated antigen (LFA-3) and CD48/BCM1 to mediate adhesion between T-cells and other cell types. CD2 is implicated in the triggering of T-cells, the cytoplasmic domain is implicated in the signaling function.
配列類似性	Contains 1 Ig-like C2-type (immunoglobulin-like) domain. Contains 1 Ig-like V-type (immunoglobulin-like) domain.
細胞内局在	Membrane.

画像



Flow cytometric analysis of mouse primary splenocytes labeling CD2 with ab219411 at 1/500 dilution (right panel) compared with a Rabbit IgG, monoclonal [EPR25A] - Isotype Control (**ab172730**) (left panel). Goat Anti-Rabbit IgG H&L (Alexa Fluor® 488) (**ab150077**) at 1/2000 dilution was used as the secondary antibody.

Cells were surface stained with anti-mouse CD19-Alexa Fluor®647 and rabbit IgG (left) / ab219411 (right). Gated on total viable cells.



Western blot - Anti-CD2 antibody [EPR21825]
(ab219411)

Anti-CD2 antibody [EPR21825] (ab219411) at 1/1000 dilution +
Mouse thymus lysate at 20 µg

Secondary

Goat Anti-Rabbit IgG H&L (HRP) ([ab97051](#)) at 1/100000 dilution

Developed using the ECL technique.

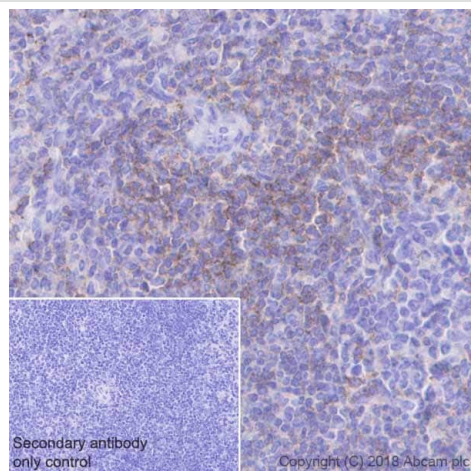
Predicted band size: 38 kDa

Observed band size: 45-58 kDa

Exposure time: 3 minutes

Blocking/Dilution buffer: 5% NFDm/TBST.

Molecular mass is consistent with the literature (PMID 10510361).

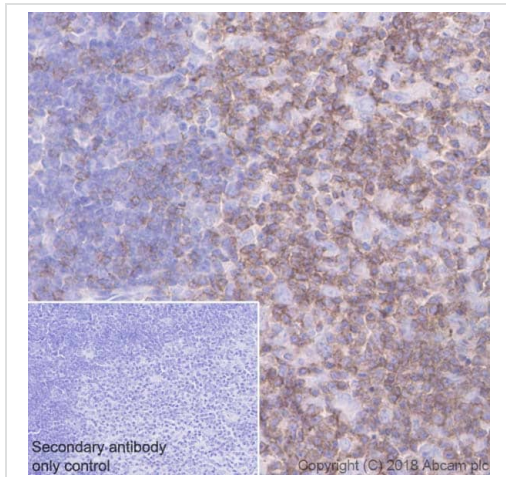


Immunohistochemistry (Formalin/PFA-fixed paraffin-
embedded sections) - Anti-CD2 antibody
[EPR21825] (ab219411)

Immunohistochemical analysis of paraffin-embedded mouse spleen tissue labeling CD2 with ab219411 at 1/2000 dilution, followed by a ready to use Goat Anti-Rabbit IgG H&L (HRP). Cytoplasmic staining in mouse spleen (PMID: 2901356) is observed. Counter stained with hematoxylin.

Secondary antibody only control: Used PBS instead of primary antibody, secondary antibody is a ready to use Goat Anti-Rabbit IgG H&L (HRP).

Perform heat-mediated antigen retrieval using [ab93684](#) (Tris/EDTA buffer, pH 9.0).

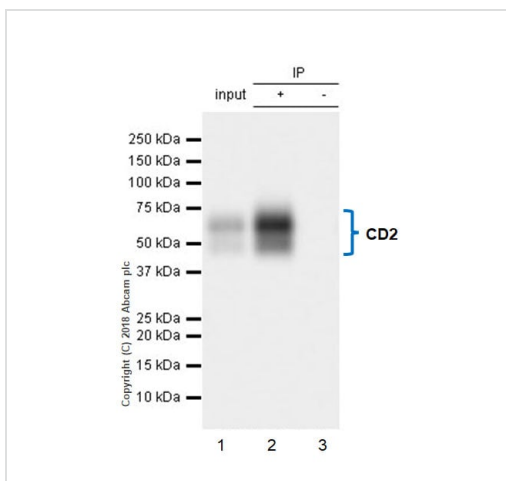


Immunohistochemistry (Formalin/PFA-fixed paraffin-embedded sections) - Anti-CD2 antibody
[EPR21825] (ab219411)

Immunohistochemical analysis of paraffin-embedded mouse thymus tissue labeling CD2 with ab219411 at 1/2000 dilution, followed by a ready to use Goat Anti-Rabbit IgG H&L (HRP). Cytoplasmic staining in mouse thymus (PMID: 2901356) is observed. Counter stained with hematoxylin.

Secondary antibody only control: Used PBS instead of primary antibody, secondary antibody is a ready to use Goat Anti-Rabbit IgG H&L (HRP).

Perform heat-mediated antigen retrieval using [ab93684](#) (Tris/EDTA buffer, pH 9.0).



Immunoprecipitation - Anti-CD2 antibody
[EPR21825] (ab219411)

CD2 was immunoprecipitated from 0.35 mg of mouse thymus lysate with ab219411 at 1/30 dilution. Western blot was performed from the immunoprecipitate using ab219411 at 1/1,000 dilution. VeriBlot for IP Detection Reagent (HRP) ([ab131366](#)), was used for detection at 1/10,000 dilution.

Lane 1: Mouse thymus lysate 10 µg (Input).

Lane 2: ab219411 IP in mouse thymus lysate.

Lane 3: Rabbit monoclonal IgG ([ab172730](#)) instead of ab219411 in mouse thymus lysate.

Blocking and dilution buffer and concentration: 5% NFDM/TBST.

Exposure time: 3 seconds.

Why choose a recombinant antibody?



Research with confidence
Consistent and reproducible results



Long-term and scalable supply
Recombinant technology



Success from the first experiment
Confirmed specificity



Ethical standards compliant
Animal-free production

Anti-CD2 antibody [EPR21825] (ab219411)

Please note: All products are "FOR RESEARCH USE ONLY. NOT FOR USE IN DIAGNOSTIC PROCEDURES"

Our Abpromise to you: Quality guaranteed and expert technical support

- Replacement or refund for products not performing as stated on the datasheet
- Valid for 12 months from date of delivery
- Response to your inquiry within 24 hours
- We provide support in Chinese, English, French, German, Japanese and Spanish
- Extensive multi-media technical resources to help you
- We investigate all quality concerns to ensure our products perform to the highest standards

If the product does not perform as described on this datasheet, we will offer a refund or replacement. For full details of the Abpromise, please visit <https://www.abcam.co.jp/abpromise> or contact our technical team.

Terms and conditions

- Guarantee only valid for products bought direct from Abcam or one of our authorized distributors