


Anti-CD1d antibody [NOR3.2 (NOR3.2/13.17)] ab11076

★★★★☆ **2 Abreviews** **10 References** **画像数 3**

製品の概要

製品名	Anti-CD1d antibody [NOR3.2 (NOR3.2/13.17)]
製品の詳細	Mouse monoclonal [NOR3.2 (NOR3.2/13.17)] to CD1d
由来種	Mouse
アプリケーション	適用あり: IHC-P, Flow Cyt (Intra)
種交差性	交差種: Human 交差が予測される動物種: Sheep 
免疫原	Fusion protein corresponding to Human CD1d.
ポジティブ・コントロール	IHC-P: Human skin tissue. Flow Cyt (Intra): MOLT4 cells.
特記事項	<p>This antibody clone is manufactured by Abcam. If you require a custom buffer formulation or conjugation for your experiments, please contact orders@abcam.com.</p> <p>The Life Science industry has been in the grips of a reproducibility crisis for a number of years. Abcam is leading the way in addressing this with our range of recombinant monoclonal antibodies and knockout edited cell lines for gold-standard validation. Please check that this product meets your needs before purchasing.</p> <p>If you have any questions, special requirements or concerns, please send us an inquiry and/or contact our Support team ahead of purchase. Recommended alternatives for this product can be found below, along with publications, customer reviews and Q&As</p>

製品の特性

製品の状態	Liquid
保存方法	Shipped at 4°C. Store at +4°C short term (1-2 weeks). Upon delivery aliquot. Store at -20°C or -80°C. Avoid freeze / thaw cycle.
バッファー	pH: 7.40 Preservative: 0.02% Sodium azide Constituents: PBS, 6.97% L-Arginine
精製度	Protein G purified
特記事項 (精製)	Purified from tissue culture supernatant.
ポリ/モノ	モノクローナル
クローン名	NOR3.2 (NOR3.2/13.17)

ミエローマ	NS0
アイソタイプ	IgG1
軽鎖の種類	kappa

アプリケーション

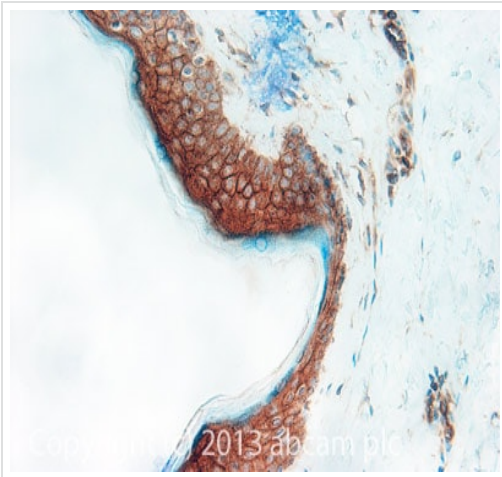
The Abpromise guarantee **Abpromise保証は、次のテスト済みアプリケーションにおけるab11076の使用に適用されず**
 アプリケーションノートには、推奨の開始希釈率がありますが、適切な希釈率につきましてはご検討ください。

アプリケーション	Abreviews	特記事項
IHC-P	★★★★☆ (2)	Use a concentration of 5 µg/ml. Perform heat mediated antigen retrieval before commencing with IHC staining protocol.
Flow Cyt (Intra)		Use 1µg for 10 ⁶ cells. ab170190 - Mouse monoclonal IgG1, is suitable for use as an isotype control with this antibody.

ターゲット情報

機能	Antigen-presenting protein that binds self and non-self glycolipids and presents them to T-cell receptors on natural killer T-cells.
組織特異性	Expressed on cortical thymocytes, on certain T-cell leukemias, and in various other tissues.
配列類似性	Contains 1 Ig-like (immunoglobulin-like) domain.
細胞内局在	Cell membrane. Endosome membrane. Lysosome membrane. Subject to intracellular trafficking between the cell membrane, endosomes and lysosomes.

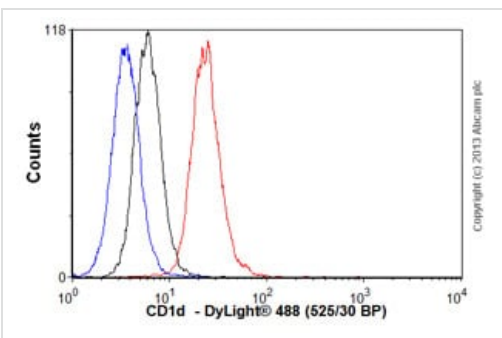
画像



Immunohistochemistry (Formalin/PFA-fixed paraffin-embedded sections) - Anti-CD1d antibody [NOR3.2 (NOR3.2/13.17)] (ab11076)

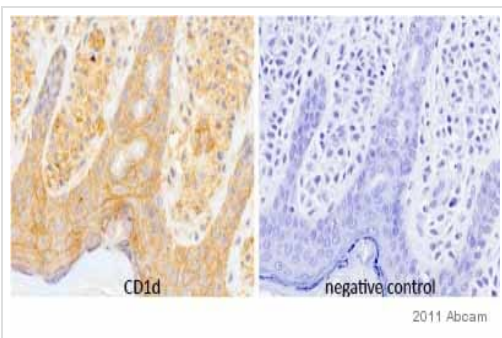
IHC image of CD1d staining in human normal skin formalin fixed paraffin embedded tissue section, performed on a Leica Bond™ system using the standard protocol F. The section was pre-treated using heat mediated antigen retrieval with EDTA based pH 9.0 solution (epitope retrieval solution 2) for 20 mins. The section was then incubated with ab11076, 5µg/ml, for 15 mins at room temperature and detected using an HRP conjugated compact polymer system. DAB was used as the chromogen. The section was then counterstained with haematoxylin and mounted with DPX.

For other IHC staining systems (automated and non-automated) customers should optimize variable parameters such as antigen retrieval conditions, primary antibody concentration and antibody incubation times.



Flow Cytometry (Intracellular) - Anti-CD1d antibody [NOR3.2 (NOR3.2/13.17)] (ab11076)

Overlay histogram showing MOLT4 cells stained with ab11076 (red line). The cells were fixed with 4% paraformaldehyde (10 min) and then permeabilized with 0.1% PBS-Tween for 20 min. The cells were then incubated in 1x PBS / 10% normal goat serum / 0.3M glycine to block non-specific protein-protein interactions followed by the antibody (ab11076, 1µg/1x10⁶ cells) for 30 min at 22°C. The secondary antibody used was DyLight® 488 goat anti-mouse IgG (H+L) (**ab96879**) at 1/500 dilution for 30 min at 22°C. Isotype control antibody (black line) was mouse IgG1 [ICIGG1] (**ab91353**, 2µg/1x10⁶ cells) used under the same conditions. Unlabeled sample (blue line). Acquisition of >5,000 events were collected using a 20mW Argon ion laser (488nm) and 525/30 bandpass filter.



Immunohistochemistry (Formalin/PFA-fixed paraffin-embedded sections) - Anti-CD1d antibody [NOR3.2 (NOR3.2/13.17)] (ab11076)

Image courtesy of an anonymous Abreview.

ab11076 staining CD1d in human skin tissue by

Immunohistochemistry (Formalin/PFA-fixed paraffin-embedded sections).

Tissue was fixed with formaldehyde and an antigen retrieval step was performed using EDTA pH 8.0 for 20 minutes at 100°C.

Samples were then incubated with ab11076 at a 1/200 dilution for 20 minutes at 25°C. The secondary used was an undiluted HRP conjugated goat anti-mouse/rabbit IgG.

Our Abpromise to you: Quality guaranteed and expert technical support

- Replacement or refund for products not performing as stated on the datasheet
- Valid for 12 months from date of delivery
- Response to your inquiry within 24 hours

- We provide support in Chinese, English, French, German, Japanese and Spanish
- Extensive multi-media technical resources to help you
- We investigate all quality concerns to ensure our products perform to the highest standards

If the product does not perform as described on this datasheet, we will offer a refund or replacement. For full details of the Abpromise, please visit <https://www.abcam.co.jp/abpromise> or contact our technical team.

Terms and conditions

- Guarantee only valid for products bought direct from Abcam or one of our authorized distributors