

# Anti-CD1b antibody [EP7251] ab173576

RabMAb

## 1 References [画像数 8](#)

### 製品の概要

製品名	Anti-CD1b antibody [EP7251]
製品の詳細	Rabbit monoclonal [EP7251] to CD1b
由来種	Rabbit
アプリケーション	<b>適用あり:</b> WB, IHC-P, ICC/IF <b>適用なし:</b> Flow Cyt or IP
種交差性	<b>交差種:</b> Human <b>非交差種:</b> Mouse, Rat
免疫原	Synthetic peptide within Human CD1b aa 50-150 (Cysteine residue). The exact sequence is proprietary. Database link: <a href="#">P29016</a> <a href="#">Run BLAST with</a> <a href="#">Run BLAST with</a>
ポジティブ・コントロール	Fetal thymus and Jurkat lysates, Human spleen tissue, Jurkat cells.
特記事項	<p>Our RabMAb<sup>®</sup> technology is a patented hybridoma-based technology for making rabbit monoclonal antibodies. For details on our patents, please refer to <a href="#">RabMAb<sup>®</sup> patents</a>.</p> <p>The Life Science industry has been in the grips of a reproducibility crisis for a number of years. Abcam is leading the way in addressing this with our range of recombinant monoclonal antibodies and knockout edited cell lines for gold-standard validation. Please check that this product meets your needs before purchasing.</p> <p>If you have any questions, special requirements or concerns, please send us an inquiry and/or contact our Support team ahead of purchase. Recommended alternatives for this product can be found below, along with publications, customer reviews and Q&amp;As</p>

### 製品の特性

製品の状態	Liquid
保存方法	Shipped at 4°C. Store at +4°C short term (1-2 weeks). Upon delivery aliquot. Store at -20°C long term. Avoid freeze / thaw cycle.
バッファー	pH: 7.20 Preservative: 0.01% Sodium azide Constituents: 9% PBS, 40% Glycerol (glycerin, glycerine), 0.05% BSA, 50% Tissue culture

	supernatant
精製度	Tissue culture supernatant
ポリ/モノ	モノクローナル
クローン名	EP7251
アイソタイプ	IgG

## アプリケーション

**The Abpromise guarantee** **Abpromise保証は、次のテスト済みアプリケーションにおけるab173576の使用に適用されます**  
 アプリケーションノートには、推奨の開始希釈率がありますが、適切な希釈率につきましてはご検討ください。

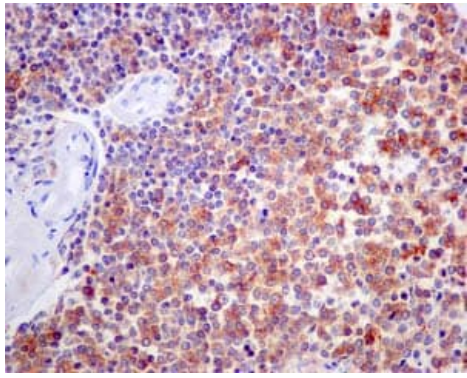
アプリケーション	Abreviews	特記事項
WB		1/1000 - 1/10000. Predicted molecular weight: 37 kDa.
IHC-P		1/100 - 1/250. Perform heat mediated antigen retrieval before commencing with IHC staining protocol.
ICC/IF		1/50 - 1/100.

**追加情報** Is unsuitable for Flow Cyt or IP.

## ターゲット情報

<b>機能</b>	Antigen-presenting protein that binds self and non-self lipid and glycolipid antigens and presents them to T-cell receptors on natural killer T-cells.
<b>組織特異性</b>	Expressed on cortical thymocytes, on certain T-cell leukemias, and in various other tissues.
<b>配列類似性</b>	Contains 1 Ig-like (immunoglobulin-like) domain.
<b>細胞内局在</b>	Cell membrane. Endosome membrane. Lysosome membrane. Subject to intracellular trafficking between the cell membrane, endosomes and lysosomes. Localizes to cell surface lipid rafts.

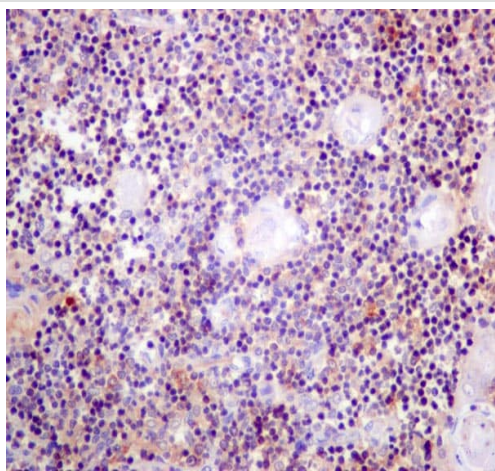
## 画像



Immunohistochemistry (Formalin/PFA-fixed paraffin-embedded sections) - Anti-CD1b antibody [EP7251] (ab173576)

Immunohistochemical analysis of paraffin-embedded Human spleen tissue labeling CD1b with ab173576 at 1/100 dilution

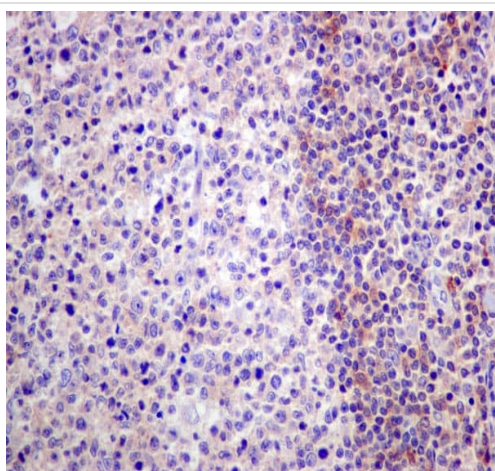
Perform heat mediated antigen retrieval before commencing with IHC staining protocol.



Immunohistochemistry (Formalin/PFA-fixed paraffin-embedded sections) - Anti-CD1b antibody [EP7251] (ab173576)

ab173576 showing +ve staining in Human normal thymus tissue.

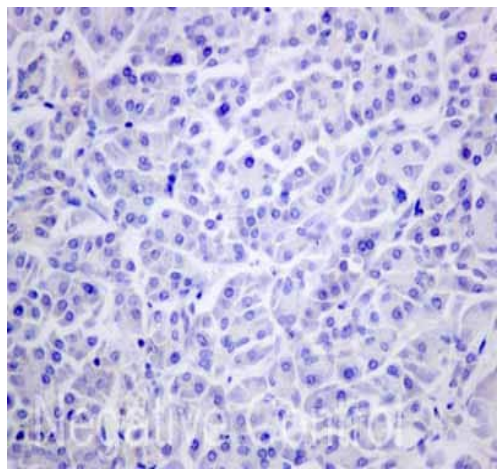
Perform heat mediated antigen retrieval before commencing with IHC staining protocol.



Immunohistochemistry (Formalin/PFA-fixed paraffin-embedded sections) - Anti-CD1b antibody [EP7251] (ab173576)

ab173576 showing +ve staining in Human normal tonsil tissue.

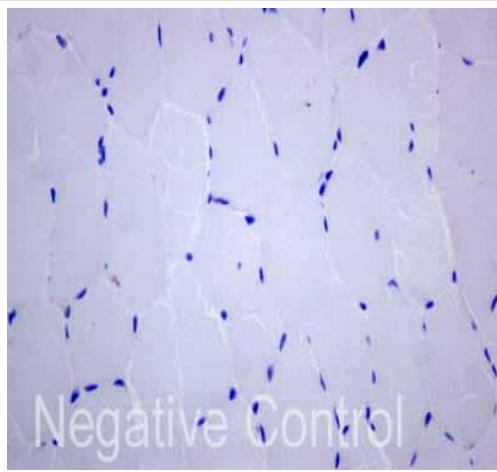
Perform heat mediated antigen retrieval before commencing with IHC staining protocol.



Immunohistochemistry (Formalin/PFA-fixed paraffin-embedded sections) - Anti-CD1b antibody [EP7251] (ab173576)

ab173576 showing -ve staining in Human normal pancreas tissue.

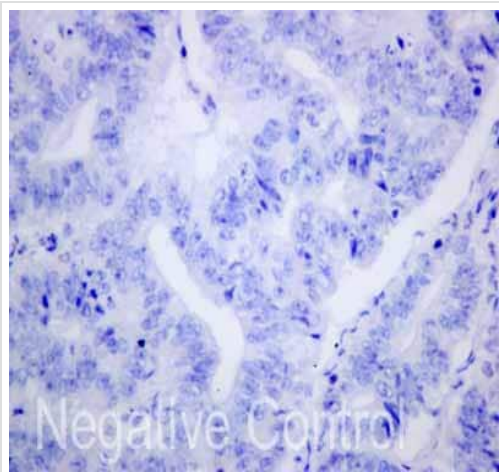
Perform heat mediated antigen retrieval before commencing with IHC staining protocol.



Immunohistochemistry (Formalin/PFA-fixed paraffin-embedded sections) - Anti-CD1b antibody [EP7251] (ab173576)

ab173576 showing -ve staining in Human skeletal muscle tissue.

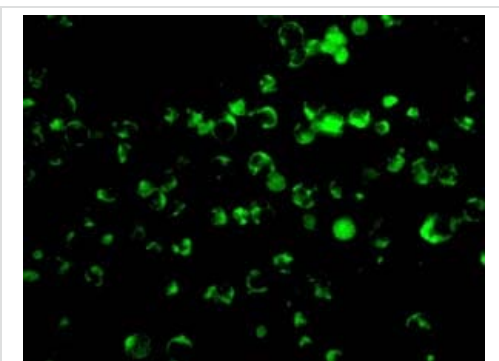
Perform heat mediated antigen retrieval before commencing with IHC staining protocol.



Immunohistochemistry (Formalin/PFA-fixed paraffin-embedded sections) - Anti-CD1b antibody [EP7251] (ab173576)

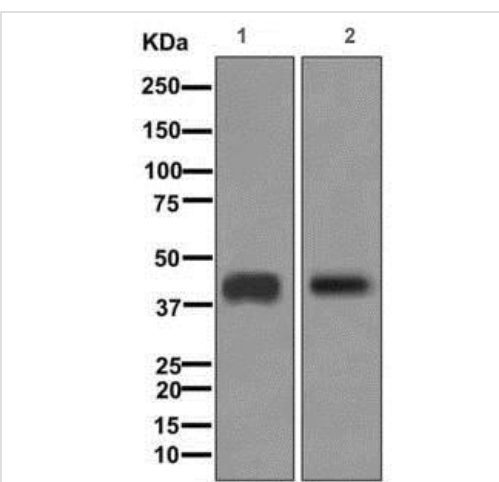
ab173576 showing -ve staining in Human endometrial adenocarcinoma tissue.

Perform heat mediated antigen retrieval before commencing with IHC staining protocol.



Immunocytochemistry/ Immunofluorescence - Anti-CD1b antibody [EP7251] (ab173576)

Immunofluorescent staining of Jurkat cells labeling CD1b with ab173576 at 1/50 dilution



Western blot - Anti-CD1b antibody [EP7251] (ab173576)

**All lanes** : Anti-CD1b antibody [EP7251] (ab173576) at 1/1000 dilution

**Lane 1** : Human fetal thymus lysate

**Lane 2** : Jurkat lysate

Lysates/proteins at 10 µg per lane.

**Predicted band size:** 37 kDa

## **Our Abpromise to you: Quality guaranteed and expert technical support**

---

- Replacement or refund for products not performing as stated on the datasheet
- Valid for 12 months from date of delivery
- Response to your inquiry within 24 hours
  
- We provide support in Chinese, English, French, German, Japanese and Spanish
- Extensive multi-media technical resources to help you
- We investigate all quality concerns to ensure our products perform to the highest standards

If the product does not perform as described on this datasheet, we will offer a refund or replacement. For full details of the Abpromise, please visit <https://www.abcam.co.jp/abpromise> or contact our technical team.

## **Terms and conditions**

---

- Guarantee only valid for products bought direct from Abcam or one of our authorized distributors