

Anti-CD1a antibody [C1A/711] ab201337

5 References [画像数 1](#)

製品の概要

製品名	Anti-CD1a antibody [C1A/711]
製品の詳細	Mouse monoclonal [C1A/711] to CD1a
由来種	Mouse
アプリケーション	適用あり: IHC-P, WB, IP, ICC/IF, IHC-Fr, Flow Cyt
種交差性	交差種: Human
免疫原	Recombinant full length protein corresponding to Human CD1a. Database link: <u>P06126</u>
ポジティブ・コントロール	IHC-P: Human skin tissue.
特記事項	<p>The Life Science industry has been in the grips of a reproducibility crisis for a number of years. Abcam is leading the way in addressing this with our range of recombinant monoclonal antibodies and knockout edited cell lines for gold-standard validation. Please check that this product meets your needs before purchasing.</p> <p>If you have any questions, special requirements or concerns, please send us an inquiry and/or contact our Support team ahead of purchase. Recommended alternatives for this product can be found below, along with publications, customer reviews and Q&As</p>

製品の特性

製品の状態	Liquid
保存方法	Shipped at 4°C. Store at +4°C short term (1-2 weeks). Upon delivery aliquot. Store at -20°C long term. Avoid freeze / thaw cycle.
バッファー	pH: 7.2 Preservative: 0.05% Sodium azide Constituents: 99% PBS, 0.05% BSA
精製度	Protein A/G purified
特記事項 (精製)	ab201337 is purified from Bioreactor Concentrate.
ポリ/モノ	モノクローナル
クローン名	C1A/711
アイソタイプ	IgG1
軽鎖の種類	kappa

アプリケーション

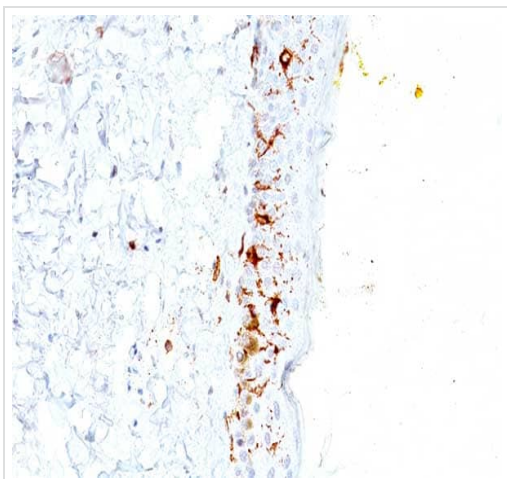
The Abpromise guarantee **Abpromise保証は、次のテスト済みアプリケーションにおけるab201337の使用に適用されます**
アプリケーションノートには、推奨の開始希釈率がありますが、適切な希釈率につきましてはご検討ください。

アプリケーション	Abreviews	特記事項
IHC-P		Use a concentration of 1 - 2 µg/ml. Perform heat mediated antigen retrieval with citrate buffer pH 6 before commencing with IHC staining protocol. For 30 min at RT.
WB		Use at an assay dependent concentration.
IP		Use at an assay dependent concentration.
ICC/IF		Use at an assay dependent concentration.
IHC-Fr		Use at an assay dependent concentration. For 30 min at RT.
Flow Cyt		Use at an assay dependent concentration. ab170190 - Mouse monoclonal IgG1, is suitable for use as an isotype control with this antibody.

ターゲット情報

機能	Antigen-presenting protein that binds self and non-self lipid and glycolipid antigens and presents them to T-cell receptors on natural killer T-cells.
組織特異性	Expressed on cortical thymocytes, epidermal Langerhans cells, dendritic cells, on certain T-cell leukemias, and in various other tissues.
配列類似性	Contains 1 Ig-like (immunoglobulin-like) domain.
細胞内局在	Cell membrane. Endosome membrane. Subject to intracellular trafficking between the cell membrane and endosomes. Localizes to cell surface lipid rafts.

画像



Immunohistochemical analysis of formalin-fixed, paraffin-embedded
Human skin tissue labeling CD1a with ab201337 at 1 µg/ml.

Immunohistochemistry (Formalin/PFA-fixed paraffin-
embedded sections) - Anti-CD1a antibody [C1A/711]
(ab201337)

Please note: All products are "FOR RESEARCH USE ONLY. NOT FOR USE IN DIAGNOSTIC PROCEDURES"

Our Abpromise to you: Quality guaranteed and expert technical support

- Replacement or refund for products not performing as stated on the datasheet
- Valid for 12 months from date of delivery
- Response to your inquiry within 24 hours
- We provide support in Chinese, English, French, German, Japanese and Spanish
- Extensive multi-media technical resources to help you
- We investigate all quality concerns to ensure our products perform to the highest standards

If the product does not perform as described on this datasheet, we will offer a refund or replacement. For full details of the Abpromise, please visit <https://www.abcam.co.jp/abpromise> or contact our technical team.

Terms and conditions

- Guarantee only valid for products bought direct from Abcam or one of our authorized distributors