

Anti-CD168 antibody [EPR4054] ab124729

KO 評価済 リコンビナント RabMAb

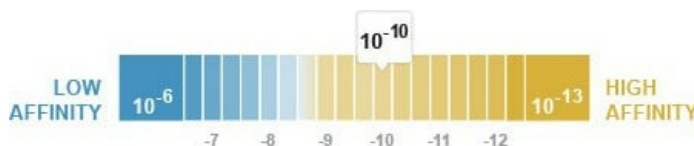
★★★★★ **2 Abreviews** **13 References** 画像数 8

製品の概要

製品名	Anti-CD168 antibody [EPR4054]
製品の詳細	Rabbit monoclonal [EPR4054] to CD168
由来種	Rabbit
アプリケーション	適用あり: WB, IP, IHC-P 適用なし: Flow Cyt or ICC/IF
種交差性	交差種: Mouse, Rat, Human
免疫原	Synthetic peptide within Human CD168 aa 1-100. The exact sequence is proprietary.
ポジティブ・コントロール	Lysates of: MDA-MB-435, LnCaP, T47-D, RAW264.7, PC-12. Human testis tissue
特記事項	This product is a recombinant monoclonal antibody, which offers several advantages including: <ul style="list-style-type: none"> - High batch-to-batch consistency and reproducibility - Improved sensitivity and specificity - Long-term security of supply - Animal-free production For more information see here . Our RabMAb® technology is a patented hybridoma-based technology for making rabbit monoclonal antibodies. For details on our patents, please refer to RabMAb® patents .

製品の特性

製品の状態	Liquid
保存方法	Shipped at 4°C. Store at +4°C short term (1-2 weeks). Upon delivery aliquot. Store at -20°C. Avoid freeze / thaw cycle. Stable for 12 months at -20°C.
解離定数 (K _D 値)	K _D = 1.23 x 10 ⁻¹⁰ M



[Learn more about K_D](#)

バッファー	pH: 7.20 Preservative: 0.01% Sodium azide
-------	--

	Constituents: 40% Glycerol, 0.05% BSA, 59% PBS
精製度	Protein A purified
ポリ/モノ	モノクローナル
クローン名	EPR4054
アイソタイプ	IgG

アプリケーション

The Abpromise guarantee **Abpromise保証は、**次のテスト済みアプリケーションにおけるab124729の使用に適用されます
アプリケーションノートには、推奨の開始希釈率がありますが、適切な希釈率につきましてはご検討ください。

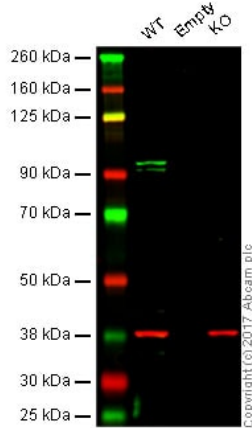
アプリケーション	Abreviews	特記事項
WB	★★★★★ (1)	1/1000. Predicted molecular weight: 84 kDa. For unpurified use at 1/1000 - 1/10000. The mouse and rat recommendation is based on the WB results. This antibody may not be suitable for IHC with mouse or rat samples.
IP		1/10 - 1/100.
IHC-P		1/250. Perform heat mediated antigen retrieval with Tris/EDTA buffer pH 9.0 before commencing with IHC staining protocol. For unpurified use at 1/50 - 1/100. Antigen retrieval is recommended

追加情報 Is unsuitable for Flow Cyt or ICC/IF.

ターゲット情報

機能	Involved in cell motility. When hyaluronan binds to HMMR, the phosphorylation of a number of proteins, including the focal adhesion kinase occurs. May also be involved in cellular transformation and metastasis formation, and in regulating extracellular-regulated kinase (ERK) activity.
組織特異性	Expressed in breast cancer cell lines and in normal breast tissue.
細胞内局在	Cell surface. Cytoplasm.

画像



Western blot - Anti-CD168 antibody [EPR4054]
(ab124729)

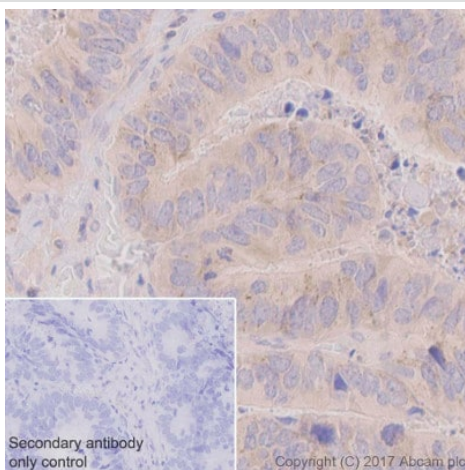
Lane 1: Wild type HAP1 whole cell lysate (20 µg)

Lane 2: Empty

Lane 3: CD168 knockout HAP1 whole cell lysate (20 µg)

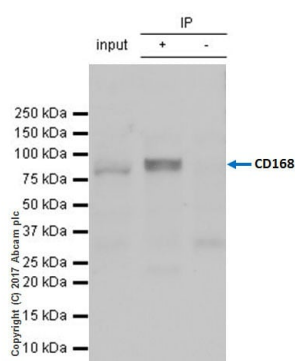
Lanes 1 - 3: Merged signal (red and green). Green - ab124729 observed at 90 kDa. Red - loading control, **ab9484**, observed at 37 kDa.

ab124729 was shown to specifically react with CD168 when CD168 knockout samples were used. Wild-type and CD168 knockout samples were subjected to SDS-PAGE. Ab124729 and **ab9484** (Mouse anti-GAPDH loading control) were incubated overnight at 4°C at a 1/1000 dilution and 1/10000 dilution respectively. Blots were developed with Goat anti-Rabbit IgG H&L (IRDye® 800CW) preabsorbed **ab216773** and Goat anti-Mouse IgG H&L (IRDye® 680RD) preabsorbed **ab216776** secondary antibodies at 1/20000 dilution for 1 hour at room temperature before imaging.



Immunohistochemistry (Formalin/PFA-fixed paraffin-embedded sections) - Anti-CD168 antibody [EPR4054] (ab124729)

Immunohistochemistry (Formalin/PFA-fixed paraffin-embedded sections) analysis of Human gastric carcinoma tissue sections labeling CD168 with purified ab124729 at 1:250 dilution (7.7 µg/ml). Heat mediated antigen retrieval was performed using EDTA Buffer, pH9.0. Tissue was counterstained with Hematoxylin. ImmunoHistoProbe one step HRP Polymer (ready to use) secondary antibody was used at 1:0 dilution. PBS instead of the primary antibody was used as the negative control.



Immunoprecipitation - Anti-CD168 antibody
[EPR4054] (ab124729)

ab124729 (purified) at 1:100 dilution (2ug) immunoprecipitating CD168 in MCF-7 (Human breast adenocarcinoma epithelial cell) whole cell lysate.

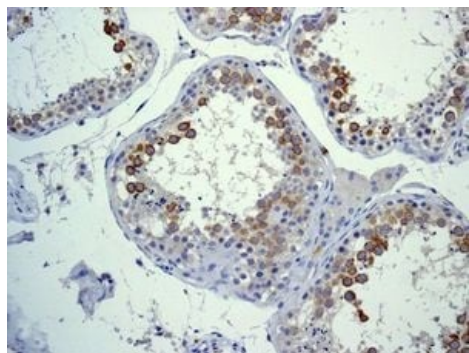
Lane 1 (input): MCF-7 (Human breast adenocarcinoma epithelial cell) whole cell lysate 10ug

Lane 2 (+): ab124729 & MCF-7 (Human breast adenocarcinoma epithelial cell) whole cell lysate

Lane 3 (-): Rabbit monoclonal IgG ([ab172730](#)) instead of ab124729 in MCF-7 (Human breast adenocarcinoma epithelial cell) whole cell lysate

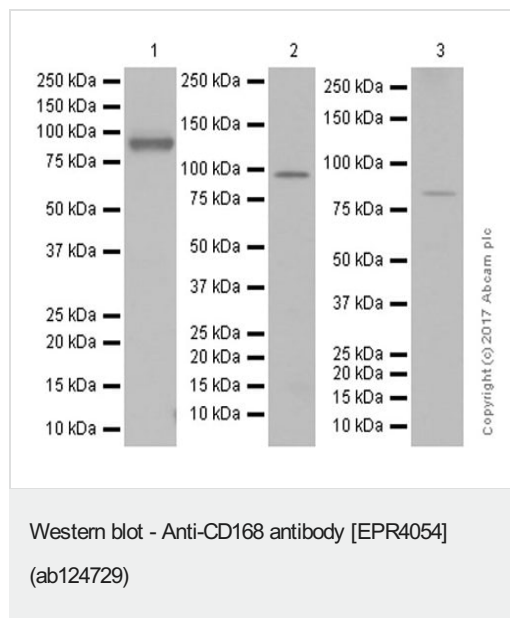
For western blotting, VeriBlot for IP Detection Reagent (HRP) ([ab131366](#)) was used for detection at 1:1000 dilution.

Blocking and diluting buffer: 5% NFDM/TBST.



Immunohistochemistry (Formalin/PFA-fixed paraffin-embedded sections) - Anti-CD168 antibody
[EPR4054] (ab124729)

Immunohistochemical analysis of paraffin-embedded human testis tissue using unpurified ab124729 at 1/50 - 1/100 dilution



All lanes : Anti-CD168 antibody [EPR4054] (ab124729) at 1/1000 dilution (purified)

Lane 1 : MDA-MB-435 (Human mammary gland ductal carcinoma melanocyte) whole cell lysates at 20 µg

Lane 2 : RAW264.7 (Mouse Abelson murine leukemia virus-induced tumor macrophage) whole cell lysates at 15 µg

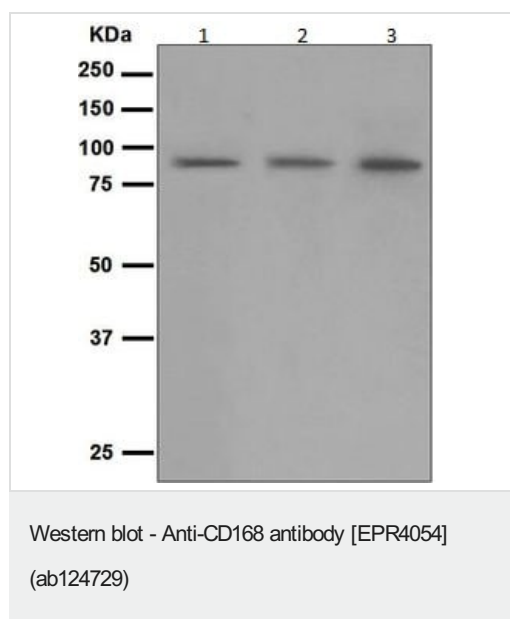
Lane 3 : PC-12 (Rat adrenal gland pheochromocytoma) whole cell lysates at 15 µg

Secondary

All lanes : Goat Anti-Rabbit IgG H&L (HRP) ([ab97051](#)) at 1/20000 dilution

Predicted band size: 84 kDa

5% NFDm/TBST



All lanes : Anti-CD168 antibody [EPR4054] (ab124729)

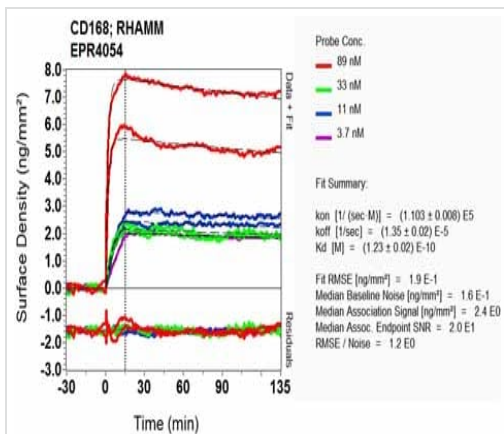
Lane 1 : MDA-MB-435 cell lysate

Lane 2 : LnCaP cell lysate

Lane 3 : T47-D cell lysate

Lysates/proteins at 10 µg per lane.

Predicted band size: 84 kDa



SPR Scanning - Anti-CD168 antibody [EPR4054]
(ab124729)

Equilibrium dissociation constant (K_D)

Learn more about K_D

[Click here to learn more about \$K_D\$](#)

Why choose α recombinant antibody?

Research with confidence
Consistent and reproducible results

Long-term and scalable supply
Recombinant technology

Success from the first experiment
Confirmed specificity

Ethical standards compliant
Animal-free production

Anti-CD168 antibody [EPR4054] (ab124729)

Please note: All products are "FOR RESEARCH USE ONLY. NOT FOR USE IN DIAGNOSTIC PROCEDURES"

Our Abpromise to you: Quality guaranteed and expert technical support

- Replacement or refund for products not performing as stated on the datasheet
- Valid for 12 months from date of delivery
- Response to your inquiry within 24 hours
- We provide support in Chinese, English, French, German, Japanese and Spanish
- Extensive multi-media technical resources to help you
- We investigate all quality concerns to ensure our products perform to the highest standards

If the product does not perform as described on this datasheet, we will offer a refund or replacement. For full details of the Abpromise, please visit <https://www.abcam.co.jp/abpromise> or contact our technical team.

Terms and conditions

- Guarantee only valid for products bought direct from Abcam or one of our authorized distributors