


### Anti-CD163 antibody [RM3/1] ab17051

★★★★★ [1 Abreviews](#) [15 References](#) [画像数 2](#)

#### 製品の概要

製品名	Anti-CD163 antibody [RM3/1]
製品の詳細	Mouse monoclonal [RM3/1] to CD163
由来種	Mouse
アプリケーション	<b>適用あり:</b> Flow Cyt (Intra), IHC-Fr <b>適用なし:</b> IHC-G or IHC-P
種交差性	<b>交差種:</b> Human <b>交差が予測される動物種:</b> Monkey  <b>非交差種:</b> Rat, Guinea pig, Pig
免疫原	Human monocytes (epitope recognized SRCR domain 9).
ポジティブ・コントロール	Flow Cyt (Intra): THP-1 cells. IHC-Fr: Human tonsil tissue.
特記事項	<p>ab17051 is very useful for macrophage phenotyping. Positive staining can be seen in the skin (histiocytes), gut, Kupffer cells, few aveolar macrophages, main population of macrophages in the placenta, varying degrees of macrophages in inflammed tissue including tumorous tissue depending on the inflammatory stage. Red pulp, not white pulp, macrophages in the spleen and cortical macrophages of the thymus are detected. Antibody is sensitive to ionic detergents and to chloroform/methanol treatment.</p> <p>The Life Science industry has been in the grips of a reproducibility crisis for a number of years. Abcam is leading the way in addressing this with our range of recombinant monoclonal antibodies and knockout edited cell lines for gold-standard validation. Please check that this product meets your needs before purchasing.</p> <p>If you have any questions, special requirements or concerns, please send us an inquiry and/or contact our Support team ahead of purchase. Recommended alternatives for this product can be found below, along with publications, customer reviews and Q&amp;As</p>

#### 製品の特性

製品の状態	Liquid
保存方法	Shipped at 4°C. Upon delivery aliquot. Store at -20°C. Avoid freeze / thaw cycle.
バッファー	Preservative: 0.02% Sodium azide Constituents: PBS, 0.1% BSA
特記事項(精製)	0.2 µm filtered.

## 一次抗体 備考

ab17051 is very useful for macrophage phenotyping. Positive staining can be seen in the skin (histiocytes), gut, Kupffer cells, few alveolar macrophages, main population of macrophages in the placenta, varying degrees of macrophages in inflamed tissue including tumorous tissue depending on the inflammatory stage. Red pulp, not white pulp, macrophages in the spleen and cortical macrophages of the thymus are detected. Antibody is sensitive to ionic detergents and to chloroform/methanol treatment.

## ポリ/モノ

モノクローナル

## クローン名

RM3/1

## アイソタイプ

IgG1

## アプリケーション

### The Abpromise guarantee

**Abpromise保証は、**次のテスト済みアプリケーションにおけるab17051の使用に適用されます

アプリケーションノートには、推奨の開始希釈率がありますが、適切な希釈率につきましてはご確認ください。

アプリケーション	Abreviews	特記事項
Flow Cyt (Intra)		Use at an assay dependent concentration. <b>ab170190</b> - Mouse monoclonal IgG1, is suitable for use as an isotype control with this antibody.
IHC-Fr		1/10.

## 追加情報

Is unsuitable for IHC-G or IHC-P.

## ターゲット情報

### 機能

Acute phase-regulated receptor involved in clearance and endocytosis of hemoglobin/haptoglobin complexes by macrophages and may thereby protect tissues from free hemoglobin-mediated oxidative damage. May play a role in the uptake and recycling of iron, via endocytosis of hemoglobin/haptoglobin and subsequent breakdown of heme. Binds hemoglobin/haptoglobin complexes in a calcium-dependent and pH-dependent manner. Exhibits a higher affinity for complexes of hemoglobin and multimeric haptoglobin of HP\*1F phenotype than for complexes of hemoglobin and dimeric haptoglobin of HP\*1S phenotype. Induces a cascade of intracellular signals that involves tyrosine kinase-dependent calcium mobilization, inositol triphosphate production and secretion of IL6 and CSF1. Isoform 3 exhibits the higher capacity for ligand endocytosis and the more pronounced surface expression when expressed in cells. After shedding, the soluble form (sCD163) may play an anti-inflammatory role, and may be a valuable diagnostic parameter for monitoring macrophage activation in inflammatory conditions.

### 組織特異性

Expressed in monocytes and mature macrophages such as Kupffer cells in the liver, red pulp macrophages in the spleen, cortical macrophages in the thymus, resident bone marrow macrophages and meningeal macrophages of the central nervous system. Expressed also in blood. Isoform 1 is the lowest abundant in the blood. Isoform 2 is the lowest abundant in the liver and the spleen. Isoform 3 is the predominant isoform detected in the blood.

### 配列類似性

Contains 9 SRCR domains.

### ドメイン

The SRCR domain 3 mediates calcium-sensitive interaction with hemoglobin/haptoglobin complexes.

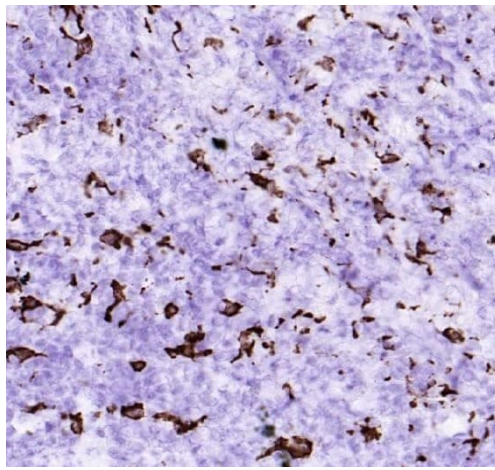
## 翻訳後修飾

A soluble form (sCD163) is produced by proteolytic shedding which can be induced by lipopolysaccharide, phorbol ester and Fc region of immunoglobulin gamma. This cleavage is dependent on protein kinase C and tyrosine kinases and can be blocked by protease inhibitors. The shedding is inhibited by the tissue inhibitor of metalloproteinase TIMP3, and thus probably induced by membrane-bound metalloproteinases ADAMs. Phosphorylated.

## 細胞内局在

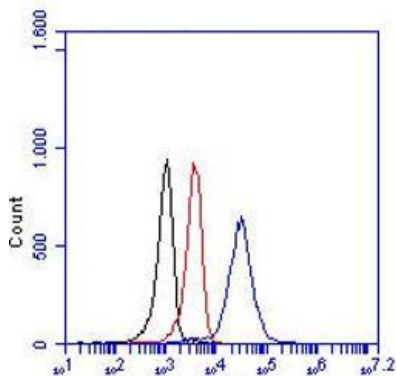
Secreted and Cell membrane. Isoform 1 and isoform 2 show a lower surface expression when expressed in cells.

## 画像



Immunohistochemistry analysis of frozen human tonsil tissue sections (interfollicular) stained for CD163 using ab17051 at a 1/10 dilution.

Immunohistochemistry (Frozen sections) - Anti-CD163 antibody [RM3/1] (ab17051)



Flow cytometric detection of CD163 in THP-1 cells. The black line represents cells only, the red line the isotype control and the blue line ab17051 in a concentration of 2 µg/250000 cells.

Flow Cytometry (Intracellular) - Anti-CD163 antibody [RM3/1] (ab17051)

**Please note:** All products are "FOR RESEARCH USE ONLY. NOT FOR USE IN DIAGNOSTIC PROCEDURES"

**Our Abpromise to you: Quality guaranteed and expert technical support**

- Replacement or refund for products not performing as stated on the datasheet
- Valid for 12 months from date of delivery
- Response to your inquiry within 24 hours
- We provide support in Chinese, English, French, German, Japanese and Spanish
- Extensive multi-media technical resources to help you
- We investigate all quality concerns to ensure our products perform to the highest standards

If the product does not perform as described on this datasheet, we will offer a refund or replacement. For full details of the Abpromise, please visit <https://www.abcam.co.jp/abpromise> or contact our technical team.

#### **Terms and conditions**

---

- Guarantee only valid for products bought direct from Abcam or one of our authorized distributors