

### Anti-CD163 antibody [OT12G12] ab156769

★★★★★ **5 Abreviews** **27 References** 画像数 5

#### 製品の概要

製品名	Anti-CD163 antibody [OT12G12]
製品の詳細	Mouse monoclonal [OT12G12] to CD163
由来種	Mouse
アプリケーション	<b>適用あり:</b> WB, IHC-P, ICC/IF
種交差性	<b>交差種:</b> Human, African green monkey
免疫原	Recombinant full length protein corresponding to Human CD163. Database link: <a href="#">Q86VB7</a>
ポジティブ・コントロール	WB: HEK-293T cell lysate transfected with pCMV6-ENTRY CD163 cDNA. IHC-P: Human liver tissue. ICC/IF: COS-7 cells transiently transfected with pCMV6-ENTRY CD163.
特記事項	<p>Dilute in PBS (pH7.3) before use.</p> <p>The clone number has been updated from 2G12 to OT12G12, both clone numbers name the same clone.</p> <p>This product was changed from ascites to tissue culture supernatant on 6<sup>th</sup> September 2018. Please note that the dilutions may need to be adjusted accordingly. If you have any questions, please do not hesitate to contact our scientific support team.</p> <p>The Life Science industry has been in the grips of a reproducibility crisis for a number of years. Abcam is leading the way in addressing this with our range of recombinant monoclonal antibodies and knockout edited cell lines for gold-standard validation. Please check that this product meets your needs before purchasing.</p> <p>If you have any questions, special requirements or concerns, please send us an inquiry and/or contact our Support team ahead of purchase. Recommended alternatives for this product can be found below, along with publications, customer reviews and Q&amp;As</p>

#### 製品の特性

製品の状態	Liquid
保存方法	Shipped at 4°C. Upon delivery aliquot and store at -20°C. Avoid repeated freeze / thaw cycles.
バッファー	pH: 7.30 Preservative: 0.02% Sodium azide Constituents: 50% Glycerol, PBS, 1% BSA
精製度	Protein G purified

特記事項(精製)	ab156769 was purified from cell culture supernatant by affinity chromatography.
ポリ/モノ	モノクローナル
クローン名	OT12G12
アイソタイプ	IgG1

## アプリケーション

**The Abpromise guarantee** Abpromise保証は、次のテスト済みアプリケーションにおけるab156769の使用に適用されます  
 アプリケーションノートには、推奨の開始希釈率がありますが、適切な希釈率につきましてはご検討ください。

アプリケーション	Abreviews	特記事項
WB	★★★★★ (1)	1/1000. Predicted molecular weight: 125 kDa.
IHC-P	★★★★★ (3)	1/150.
ICC/IF	★★★★★ (1)	1/100.

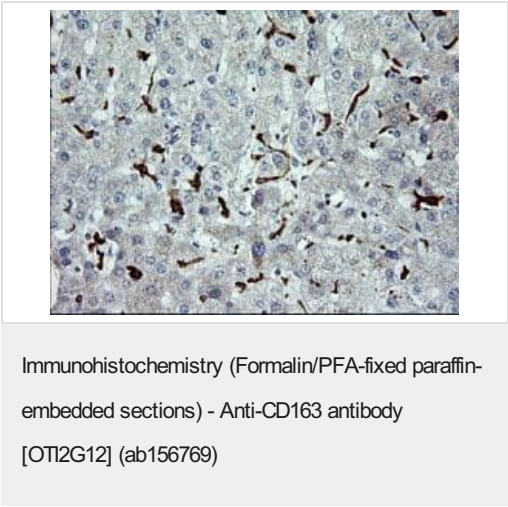
## ターゲット情報

機能	<p>Acute phase-regulated receptor involved in clearance and endocytosis of hemoglobin/haptoglobin complexes by macrophages and may thereby protect tissues from free hemoglobin-mediated oxidative damage. May play a role in the uptake and recycling of iron, via endocytosis of hemoglobin/haptoglobin and subsequent breakdown of heme. Binds hemoglobin/haptoglobin complexes in a calcium-dependent and pH-dependent manner. Exhibits a higher affinity for complexes of hemoglobin and multimeric haptoglobin of HP*1F phenotype than for complexes of hemoglobin and dimeric haptoglobin of HP*1S phenotype. Induces a cascade of intracellular signals that involves tyrosine kinase-dependent calcium mobilization, inositol triphosphate production and secretion of IL6 and CSF1. Isoform 3 exhibits the higher capacity for ligand endocytosis and the more pronounced surface expression when expressed in cells. After shedding, the soluble form (sCD163) may play an anti-inflammatory role, and may be a valuable diagnostic parameter for monitoring macrophage activation in inflammatory conditions.</p>
組織特異性	<p>Expressed in monocytes and mature macrophages such as Kupffer cells in the liver, red pulp macrophages in the spleen, cortical macrophages in the thymus, resident bone marrow macrophages and meningeal macrophages of the central nervous system. Expressed also in blood. Isoform 1 is the lowest abundant in the blood. Isoform 2 is the lowest abundant in the liver and the spleen. Isoform 3 is the predominant isoform detected in the blood.</p>
配列類似性	<p>Contains 9 SRCR domains.</p>
ドメイン	<p>The SRCR domain 3 mediates calcium-sensitive interaction with hemoglobin/haptoglobin complexes.</p>
翻訳後修飾	<p>A soluble form (sCD163) is produced by proteolytic shedding which can be induced by lipopolysaccharide, phorbol ester and Fc region of immunoglobulin gamma. This cleavage is dependent on protein kinase C and tyrosine kinases and can be blocked by protease inhibitors. The shedding is inhibited by the tissue inhibitor of metalloproteinase TIMP3, and thus probably induced by membrane-bound metalloproteinases ADAMs.</p> <p>Phosphorylated.</p>

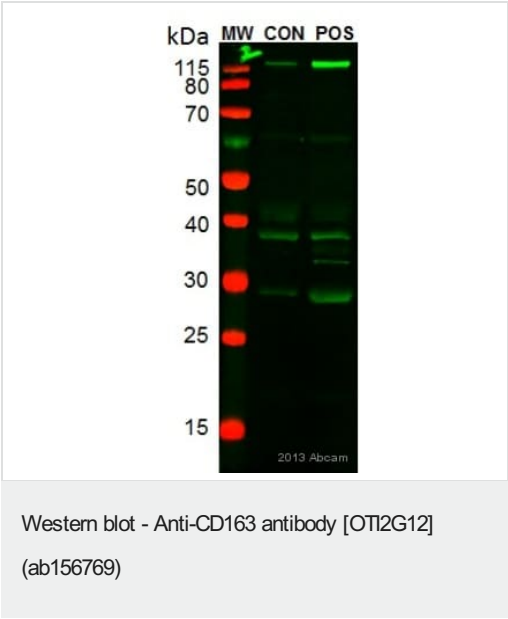
細胞内局在

Secreted and Cell membrane. Isoform 1 and isoform 2 show a lower surface expression when expressed in cells.

画像



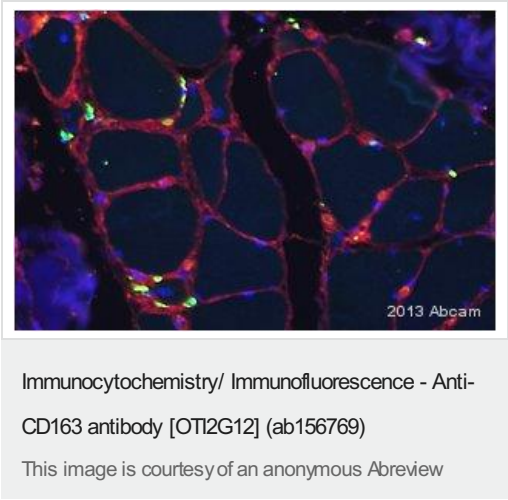
Paraffin-embedded human liver tissue stained for CD163 with ab156769 (1/150 dilution) in immunohistochemical analysis.



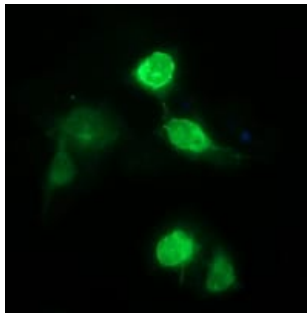
Sample: Human tissue lysate - whole (Skeletal muscle (Gastrocnemius)).  
Specification: Skeletal muscle (Gastrocnemius).  
Blocking step: Milk as blocking agent for 1 hour(s) and 0 minute(s)  
Concentration: 5% Temperature: 25°C.  
ab156769 used at a 1/1000 dilution.  
A Goat Anti-Mouse Alexa Fluor® 488 was used as the secondary at a 1/5000 dilution.

**CON = Healthy patient known to express basal levels of macrophages.**

**POS = Patient of interest Non specific bands more faint than band of interest in POS.**

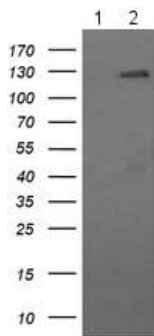


ab156769 staining CD163 in Human skeletal muscle (Gastrocnemius) by ICC/IF (Immunocytochemistry/immunofluorescence). Cells were fixed with methacarn and blocked with 10% serum for 20 minutes at 25°C. Samples were incubated with primary antibody (1/100) for 14 hours at 4°C. An Alexa Fluor® 555-conjugated Goat anti-mouse polyclonal was used as the secondary antibody (1/200).



Immunocytochemistry/ Immunofluorescence - Anti-CD163 antibody [OT12G12] (ab156769)

Immunofluorescent analysis of COS-7 (african green monkey kidney fibroblast-like cell line) cells transiently transfected with pCMV6-ENTRY CD163 labeling CD163 with ab156769 at 1/100 dilution.



Western blot - Anti-CD163 antibody [OT12G12] (ab156769)

**All lanes :** Anti-CD163 antibody [OT12G12] (ab156769) at 1/1000 dilution

**Lane 1 :** HEK-293T (human epithelial cell line from embryonic kidney transformed with large T antigen) cell lysate transfected with pCMV6-ENTRY control

**Lane 2 :** HEK-293T (human epithelial cell line from embryonic kidney transformed with large T antigen) cell lysate transfected with pCMV6-ENTRY CD163 cDNA

Lysates/proteins at 5 µg per lane.

**Predicted band size:** 125 kDa

HEK-293T cell lysates were generated from transient transfection of the cDNA clone (RC212446)

**Please note:** All products are "FOR RESEARCH USE ONLY. NOT FOR USE IN DIAGNOSTIC PROCEDURES"

### Our Abpromise to you: Quality guaranteed and expert technical support

- Replacement or refund for products not performing as stated on the datasheet
- Valid for 12 months from date of delivery
- Response to your inquiry within 24 hours
- We provide support in Chinese, English, French, German, Japanese and Spanish
- Extensive multi-media technical resources to help you
- We investigate all quality concerns to ensure our products perform to the highest standards

If the product does not perform as described on this datasheet, we will offer a refund or replacement. For full details of the Abpromise, please visit <https://www.abcam.co.jp/abpromise> or contact our technical team.

## Terms and conditions

---

- Guarantee only valid for products bought direct from Abcam or one of our authorized distributors