

Anti-CD163 antibody [EPR14643-36] - C-terminal ab189915

リコンビナント RabMAb

★★★★★ **2 Abreviews** **17 References** **画像数 6**

製品の概要

製品名	Anti-CD163 antibody [EPR14643-36] - C-terminal
製品の詳細	Rabbit monoclonal [EPR14643-36] to CD163 - C-terminal
由来種	Rabbit
アプリケーション	適用あり: IP, WB, IHC-P 適用なし: Flow Cyt
種交差性	交差種: Human
免疫原	Recombinant fragment. This information is proprietary to Abcam and/or its suppliers.
ポジティブ・コントロール	Human placenta and Human fetal liver lysates; Human liver and tonsil tissue.
特記事項	This product is a recombinant monoclonal antibody, which offers several advantages including: - High batch-to-batch consistency and reproducibility - Improved sensitivity and specificity - Long-term security of supply - Animal-free production For more information see here . Our RabMAb [®] technology is a patented hybridoma-based technology for making rabbit monoclonal antibodies. For details on our patents, please refer to RabMAb[®] patents .

製品の特性

製品の状態	Liquid
保存方法	Shipped at 4°C. Store at +4°C short term (1-2 weeks). Upon delivery aliquot. Store at -20°C long term. Avoid freeze / thaw cycle.
バッファー	pH: 7.2 Preservative: 0.01% Sodium azide Constituents: 59% PBS, 40% Glycerol (glycerin, glycerine), 0.05% BSA
精製度	Protein A purified
ポリ/モノ	モノクローナル
クローン名	EPR14643-36
アイソタイプ	IgG

アプリケーション

The Abpromise guarantee **Abpromise保証は、次のテスト済みアプリケーションにおけるab189915の使用に適用されます**
アプリケーションノートには、推奨の開始希釈率がありますが、適切な希釈率につきましてはご検討ください。

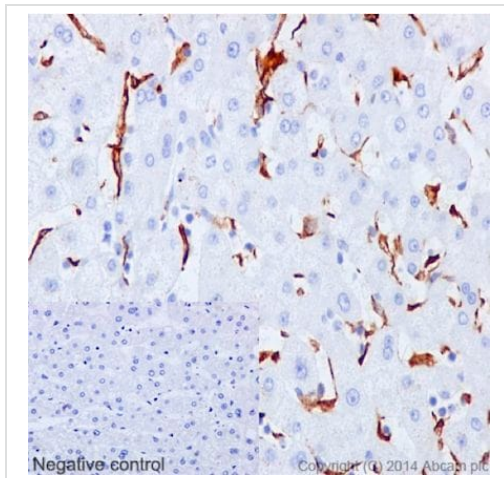
アプリケーション	Abreviews	特記事項
IP		1/30 - 1/40.
WB		1/1000 - 1/10000.
IHC-P	★★★★★ (2)	1/500 - 1/1000. Perform heat mediated antigen retrieval using EDTA based pH 9.0 buffer.

追加情報 Is unsuitable for Flow Cyt.

ターゲット情報

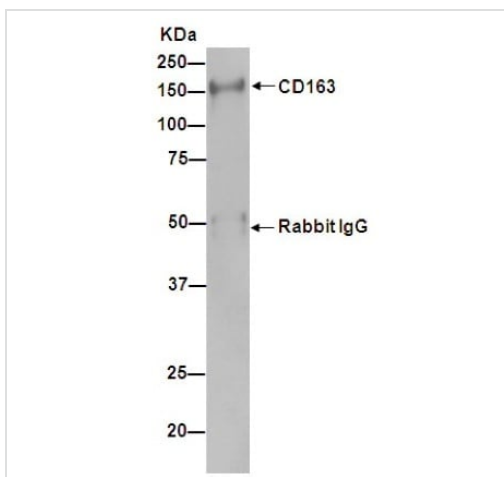
機能	Acute phase-regulated receptor involved in clearance and endocytosis of hemoglobin/haptoglobin complexes by macrophages and may thereby protect tissues from free hemoglobin-mediated oxidative damage. May play a role in the uptake and recycling of iron, via endocytosis of hemoglobin/haptoglobin and subsequent breakdown of heme. Binds hemoglobin/haptoglobin complexes in a calcium-dependent and pH-dependent manner. Exhibits a higher affinity for complexes of hemoglobin and multimeric haptoglobin of HP*1F phenotype than for complexes of hemoglobin and dimeric haptoglobin of HP*1S phenotype. Induces a cascade of intracellular signals that involves tyrosine kinase-dependent calcium mobilization, inositol triphosphate production and secretion of IL6 and CSF1. Isoform 3 exhibits the higher capacity for ligand endocytosis and the more pronounced surface expression when expressed in cells. After shedding, the soluble form (sCD163) may play an anti-inflammatory role, and may be a valuable diagnostic parameter for monitoring macrophage activation in inflammatory conditions.
組織特異性	Expressed in monocytes and mature macrophages such as Kupffer cells in the liver, red pulp macrophages in the spleen, cortical macrophages in the thymus, resident bone marrow macrophages and meningeal macrophages of the central nervous system. Expressed also in blood. Isoform 1 is the lowest abundant in the blood. Isoform 2 is the lowest abundant in the liver and the spleen. Isoform 3 is the predominant isoform detected in the blood.
配列類似性	Contains 9 SRCR domains.
ドメイン	The SRCR domain 3 mediates calcium-sensitive interaction with hemoglobin/haptoglobin complexes.
翻訳後修飾	A soluble form (sCD163) is produced by proteolytic shedding which can be induced by lipopolysaccharide, phorbol ester and Fc region of immunoglobulin gamma. This cleavage is dependent on protein kinase C and tyrosine kinases and can be blocked by protease inhibitors. The shedding is inhibited by the tissue inhibitor of metalloproteinase TIMP3, and thus probably induced by membrane-bound metalloproteinases ADAMs. Phosphorylated.
細胞内局在	Secreted and Cell membrane. Isoform 1 and isoform 2 show a lower surface expression when expressed in cells.

画像



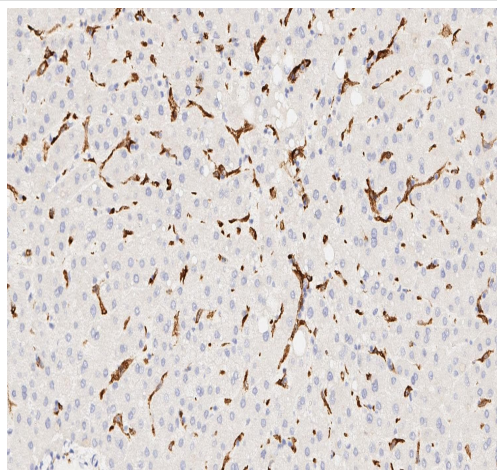
Immunohistochemical analysis of paraffin embedded Human liver tissue labeling CD163 with ab189915 at 1/1000 with prediluted ImmunoHistoprobe (Ready to use) HRP Polymer for Rabbit IgG as secondary antibody.

Immunohistochemistry (Formalin/PFA-fixed paraffin-embedded sections) - Anti-CD163 antibody [EPR14643-36] - C-terminal (ab189915)



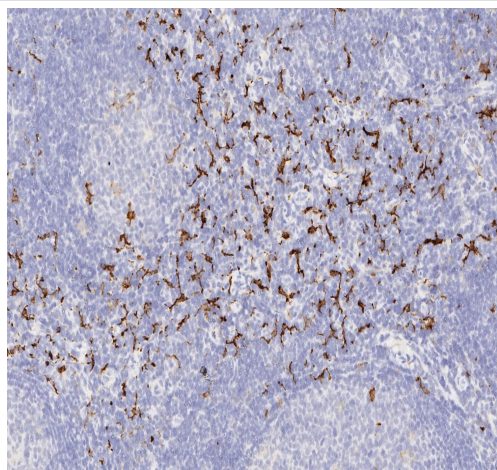
Immunoprecipitation. ab189915 at 1/1000 labeling CD163 in Human fetal kidney lysate immunoprecipitated using ab189915 at 1/50.

Immunoprecipitation - Anti-CD163 antibody [EPR14643-36] - C-terminal (ab189915)



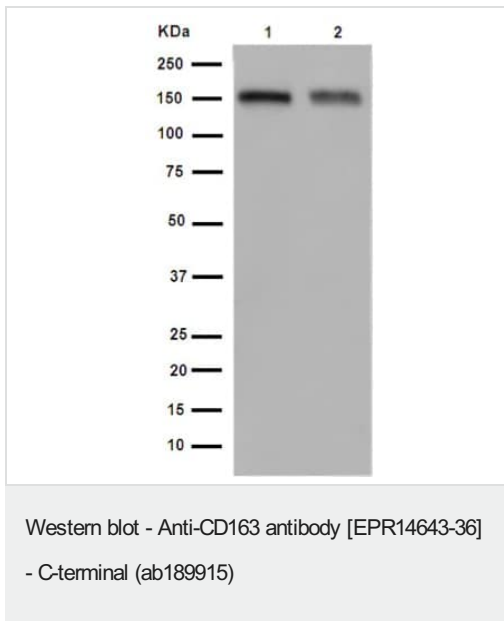
Immunohistochemistry (Formalin/PFA-fixed paraffin-embedded sections) - Anti-CD163 antibody [EPR14643-36] - C-terminal (ab189915)

Immunohistochemical analysis of paraffin embedded human liver tissue labeling CD163 with ab189915 at 1/100. No blocking step was performed. Anti-Rabbit HRP polymer was used as the secondary detection system. Heat-mediated antigen retrieval was performed using EDTA based pH 9.0 buffer.



Immunohistochemistry (Formalin/PFA-fixed paraffin-embedded sections) - Anti-CD163 antibody [EPR14643-36] - C-terminal (ab189915)

Immunohistochemical analysis of paraffin embedded human tonsil tissue labeling CD163 with ab189915 at 1/100. No blocking step was performed. Anti-Rabbit HRP polymer was used as the secondary detection system. Heat-mediated antigen retrieval was performed using EDTA based pH 9.0 buffer.



All lanes : Anti-CD163 antibody [EPR14643-36] - C-terminal (ab189915) at 1/5000 dilution

Lane 1 : Human placenta lysate





Lane 2 : Human fetal liver lysate

Lysates/proteins at 20 µg per lane.

Secondary

All lanes : Anti-Rabbit IgG (HRP), specific to the non-reduced form of IgG at 1/1000 dilution

Why choose a recombinant antibody?

 <p>Research with confidence Consistent and reproducible results</p>	 <p>Long-term and scalable supply Recombinant technology</p>
 <p>Success from the first experiment Confirmed specificity</p>	 <p>Ethical standards compliant Animal-free production</p>

Anti-CD163 antibody [EPR14643-36] - C-terminal (ab189915)

Please note: All products are "FOR RESEARCH USE ONLY. NOT FOR USE IN DIAGNOSTIC PROCEDURES"

Our Promise to you: Quality guaranteed and expert technical support

- Replacement or refund for products not performing as stated on the datasheet
- Valid for 12 months from date of delivery
- Response to your inquiry within 24 hours
- We provide support in Chinese, English, French, German, Japanese and Spanish
- Extensive multi-media technical resources to help you
- We investigate all quality concerns to ensure our products perform to the highest standards

If the product does not perform as described on this datasheet, we will offer a refund or replacement. For full details of the Abpromise, please visit <https://www.abcam.co.jp/abpromise> or contact our technical team.

Terms and conditions

- Guarantee only valid for products bought direct from Abcam or one of our authorized distributors