

### Anti-CD163 antibody ab87099

★★★★★ [6 Abreviews](#) [71 References](#) [画像数 3](#)

#### 製品の概要

製品名	Anti-CD163 antibody
製品の詳細	Rabbit polyclonal to CD163
由来種	Rabbit
アプリケーション	<b>適用あり:</b> WB, ICC/IF <b>適用なし:</b> IHC-P
種交差性	<b>交差種:</b> Human <b>交差が予測される動物種:</b> Pig, Chimpanzee, Macaque monkey, Gorilla, Orangutan 
免疫原	Synthetic peptide. This information is proprietary to Abcam and/or its suppliers.
ポジティブ・コントロール	WB: Human spleen and human thymus tissue lysates. ICC/IF: THP1 PMA treated cells
特記事項	<p>The Life Science industry has been in the grips of a reproducibility crisis for a number of years. Abcam is leading the way in addressing this with our range of recombinant monoclonal antibodies and knockout edited cell lines for gold-standard validation. Please check that this product meets your needs before purchasing.</p> <p>If you have any questions, special requirements or concerns, please send us an inquiry and/or contact our Support team ahead of purchase. Recommended alternatives for this product can be found below, along with publications, customer reviews and Q&amp;As</p>

#### 製品の特性

製品の状態	Liquid
保存方法	Shipped at 4°C. Store at +4°C short term (1-2 weeks). Upon delivery aliquot. Store at -20°C or -80°C. Avoid freeze / thaw cycle.
バッファー	pH: 7.40 Preservative: 0.02% Sodium azide Constituent: PBS  Batches of this product that have a concentration < 1mg/ml may have BSA added as a stabilising agent. If you would like information about the formulation of a specific lot, please contact our scientific support team who will be happy to help.
精製度	Immunogen affinity purified
ポリ/モノ	ポリクローナル

## アプリケーション

**The Abpromise guarantee** Abpromise保証は、次のテスト済みアプリケーションにおけるab87099の使用に適用されます  
アプリケーションノートには、推奨の開始希釈率がありますが、適切な希釈率につきましてはご検討ください。

アプリケーション	Abreviews	特記事項
WB	★★★★★ (1)	Use a concentration of 1 - 2 µg/ml. Detects a band of approximately 150 kDa (predicted molecular weight: 125 kDa).
ICC/IF	★★★★★ (2)	Use a concentration of 5 µg/ml.

## 追加情報

Is unsuitable for IHC-P.

## ターゲット情報

### 機能

Acute phase-regulated receptor involved in clearance and endocytosis of hemoglobin/haptoglobin complexes by macrophages and may thereby protect tissues from free hemoglobin-mediated oxidative damage. May play a role in the uptake and recycling of iron, via endocytosis of hemoglobin/haptoglobin and subsequent breakdown of heme. Binds hemoglobin/haptoglobin complexes in a calcium-dependent and pH-dependent manner. Exhibits a higher affinity for complexes of hemoglobin and multimeric haptoglobin of HP\*1F phenotype than for complexes of hemoglobin and dimeric haptoglobin of HP\*1S phenotype. Induces a cascade of intracellular signals that involves tyrosine kinase-dependent calcium mobilization, inositol triphosphate production and secretion of IL6 and CSF1. Isoform 3 exhibits the higher capacity for ligand endocytosis and the more pronounced surface expression when expressed in cells. After shedding, the soluble form (sCD163) may play an anti-inflammatory role, and may be a valuable diagnostic parameter for monitoring macrophage activation in inflammatory conditions.

### 組織特異性

Expressed in monocytes and mature macrophages such as Kupffer cells in the liver, red pulp macrophages in the spleen, cortical macrophages in the thymus, resident bone marrow macrophages and meningeal macrophages of the central nervous system. Expressed also in blood. Isoform 1 is the lowest abundant in the blood. Isoform 2 is the lowest abundant in the liver and the spleen. Isoform 3 is the predominant isoform detected in the blood.

### 配列類似性

Contains 9 SRCR domains.

### ドメイン

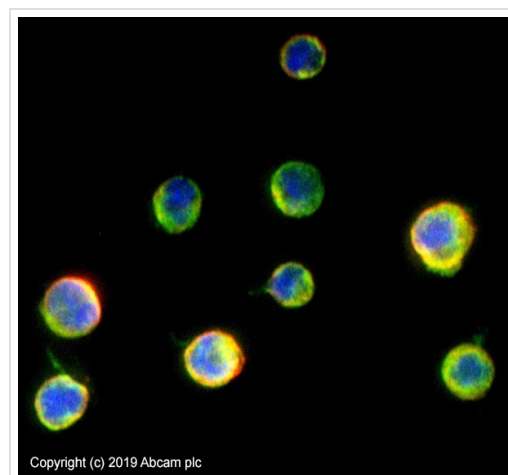
The SRCR domain 3 mediates calcium-sensitive interaction with hemoglobin/haptoglobin complexes.

### 翻訳後修飾

A soluble form (sCD163) is produced by proteolytic shedding which can be induced by lipopolysaccharide, phorbol ester and Fc region of immunoglobulin gamma. This cleavage is dependent on protein kinase C and tyrosine kinases and can be blocked by protease inhibitors. The shedding is inhibited by the tissue inhibitor of metalloproteinase TIMP3, and thus probably induced by membrane-bound metalloproteinases ADAMs.  
Phosphorylated.

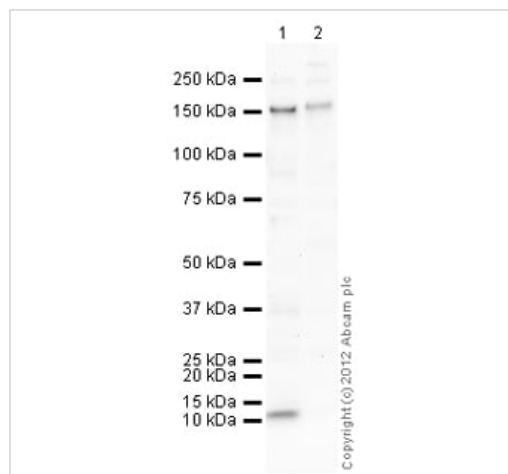
### 細胞内局在

Secreted and Cell membrane. Isoform 1 and isoform 2 show a lower surface expression when expressed in cells.



Immunocytochemistry/ Immunofluorescence - Anti-CD163 antibody (ab87099)

ab87099 stained in THP1 PMA treated cells. Cells were fixed with 4% paraformaldehyde (10 min) at room temperature and incubated with PBS containing 10% goat serum, 0.3 M glycine, 1% BSA and 0.1% Triton for 1h at room temperature to permeabilise the cells and block non-specific protein-protein interactions. The cells were then incubated with the antibody ab87099 at 5µg/ml and **ab7291** (Mouse monoclonal to alpha Tubulin - Loading Control) used at a 1/1000 dilution overnight at +4°C. The secondary antibodies were **ab150081**, Goat Anti-Rabbit IgG H&L (Alexa Fluor® 488) preadsorbed, (pseudo-colored green) and **ab150120**, Goat polyclonal Secondary Antibody to Mouse IgG - H&L (Alexa Fluor® 594) preadsorbed, (colored red), both used at a 1/1000 dilution for 1 hour at room temperature. DAPI was used to stain the cell nuclei (colored blue) at a concentration of 1.43 µM for 1 hour at room temperature.



Western blot - Anti-CD163 antibody (ab87099)

**All lanes :** Anti-CD163 antibody (ab87099) at 1 µg/ml

**Lane 1 :** Human spleen tissue lysate - total protein (**ab296999**)

**Lane 2 :** Human thymus tissue lysate - total protein (**ab30146**)

Lysates/proteins at 10 µg per lane.

### Secondary

**All lanes :** Goat Anti-Rabbit IgG H&L (HRP) preadsorbed (**ab97080**) at 1/5000 dilution

Developed using the ECL technique.

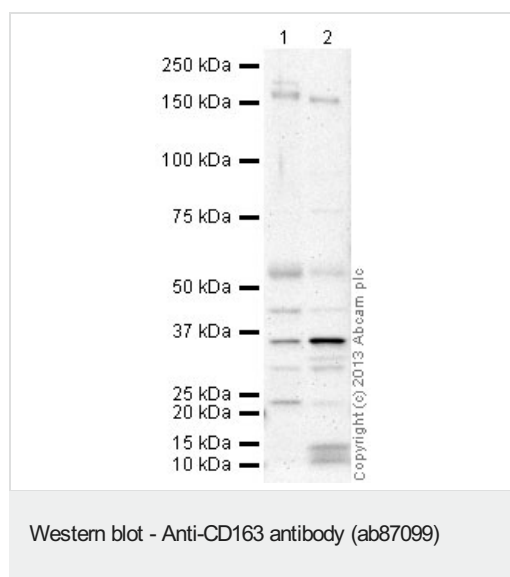
Performed under reducing conditions.

**Predicted band size:** 125 kDa

**Observed band size:** 150 kDa

**Additional bands at:** 12 kDa. We are unsure as to the identity of these extra bands.

**Exposure time:** 20 minutes



**All lanes :** Anti-CD163 antibody (ab87099) at 2 µg/ml (3% milk)

**Lane 1 :** Human thymus tissue lysate - total protein ([ab30146](#))

**Lane 2 :** Human spleen tissue lysate - total protein ([ab29699](#))

Lysates/proteins at 20 µg per lane.

#### Secondary

**All lanes :** Goat Anti-Rabbit IgG H&L (HRP) ([ab97051](#)) at 1/10000 dilution

Developed using the ECL technique.

Performed under reducing conditions.

**Predicted band size:** 125 kDa

**Observed band size:** 150 kDa

**Additional bands at:** 35 kDa, 45 kDa, 55 kDa. We are unsure as to the identity of these extra bands.

**Exposure time:** 20 minutes

**Please note:** All products are "FOR RESEARCH USE ONLY. NOT FOR USE IN DIAGNOSTIC PROCEDURES"

#### Our Abpromise to you: Quality guaranteed and expert technical support

- Replacement or refund for products not performing as stated on the datasheet
- Valid for 12 months from date of delivery
- Response to your inquiry within 24 hours
- We provide support in Chinese, English, French, German, Japanese and Spanish
- Extensive multi-media technical resources to help you
- We investigate all quality concerns to ensure our products perform to the highest standards

If the product does not perform as described on this datasheet, we will offer a refund or replacement. For full details of the Abpromise, please visit <https://www.abcam.co.jp/abpromise> or contact our technical team.

#### Terms and conditions

- Guarantee only valid for products bought direct from Abcam or one of our authorized distributors