

Anti-CD14 antibody [EPR3653] ab133335

リコンビナント RabMAb

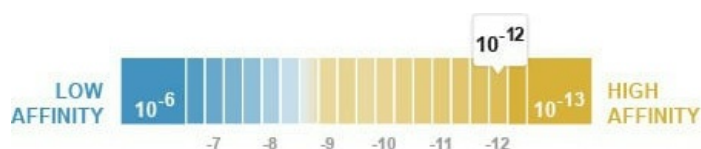
★★★★☆ **1 Abreviews** **22 References** 画像数 11

製品の概要

製品名	Anti-CD14 antibody [EPR3653]
製品の詳細	Rabbit monoclonal [EPR3653] to CD14
由来種	Rabbit
アプリケーション	適用あり: WB, IHC-P 適用なし: ICC/IF
種交差性	交差種: Human
免疫原	Synthetic peptide. This information is proprietary to Abcam and/or its suppliers.
ポジティブ・コントロール	IHC-P: human colon, placenta and tonsil tissue; WB: Human tonsil tissue lysate, SW480 and PBMC1 lysates.
特記事項	<p>This product is a recombinant monoclonal antibody, which offers several advantages including:</p> <ul style="list-style-type: none"> - High batch-to-batch consistency and reproducibility - Improved sensitivity and specificity - Long-term security of supply - Animal-free production <p>For more information see here.</p> <p>Our RabMAb[®] technology is a patented hybridoma-based technology for making rabbit monoclonal antibodies. For details on our patents, please refer to RabMAb[®] patents.</p> <p>Mouse, Rat: We have preliminary internal testing data to indicate this antibody may not react with these species. Please contact us for more information.</p>

製品の特性

製品の状態	Liquid
保存方法	Shipped at 4°C. Store at +4°C short term (1-2 weeks). Upon delivery aliquot. Store at -20°C long term. Avoid freeze / thaw cycle.
解離定数 (K_D 値)	K _D = 4.70 x 10 ⁻¹² M



[Learn more about K_D](#)

バッファー	pH: 7.2 Preservative: 0.01% Sodium azide Constituents: 59% PBS, 40% Glycerol (glycerin, glycerine), 0.05% BSA
精製度	Protein A purified
ポリモノ	モノクローナル
クローン名	EPR3653
アイソタイプ	IgG

アプリケーション

The Abpromise guarantee [Abpromise保証は、次のテスト済みアプリケーションにおけるab133335の使用に適用されず](#)
アプリケーションノートには、推奨の開始希釈率がありますが、適切な希釈率につきましてはご検討ください。

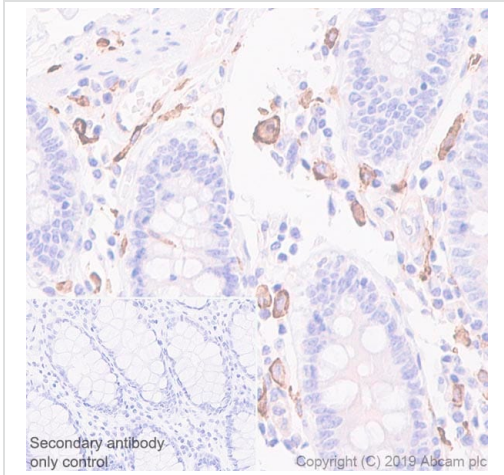
アプリケーション	Abreviews	特記事項
WB		1/1000 - 1/5000. Detects a band of approximately 53 kDa (predicted molecular weight: 40 kDa).
IHC-P	★★★★★ (1)	1/2000. Perform heat mediated antigen retrieval before commencing with IHC staining protocol. See IHC antigen retrieval protocols . For unpurified use at 1/500 - 1/1000.

追加情報 Is unsuitable for ICC/IF.

ターゲット情報

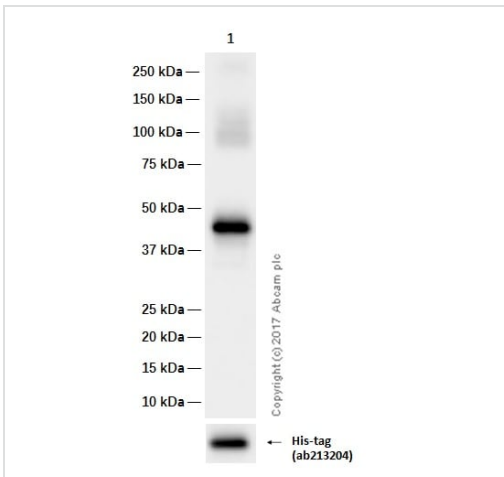
機能	Cooperates with MD-2 and TLR4 to mediate the innate immune response to bacterial lipopolysaccharide (LPS). Acts via MyD88, TIRAP and TRAF6, leading to NF-kappa-B activation, cytokine secretion and the inflammatory response. Up-regulates cell surface molecules, including adhesion molecules.
組織特異性	Expressed strongly on the surface of monocytes and weakly on the surface of granulocytes; also expressed by most tissue macrophages.
配列類似性	Contains 11 LRR (leucine-rich) repeats.
翻訳後修飾	N- and O- glycosylated. O-glycosylated with a core 1 or possibly core 8 glycan.
細胞内局在	Cell membrane.

画像



Immunohistochemistry (Formalin/PFA-fixed paraffin-embedded sections) - Anti-CD14 antibody [EPR3653] (ab133335)

Immunohistochemistry (Formalin/PFA-fixed paraffin-embedded sections) analysis of human colon tissue sections labeling CD14 with purified ab133335 at 1/2000 dilution (0.04 µg/ml). Heat mediated antigen retrieval was performed using **ab93684** (Tris/EDTA buffer, pH 9.0). ImmunoHistoProbe one step HRP Polymer (ready to use) was used as the secondary antibody. Negative control: PBS instead of the primary antibody. Hematoxylin was used as a counterstain.



Western blot - Anti-CD14 antibody [EPR3653] (ab133335)

Anti-CD14 antibody [EPR3653] (ab133335) at 1/1000 dilution (purified) + His-Tagged Human CD14 (aa20 to 345) recombinant protein at 0.015 µg

Secondary

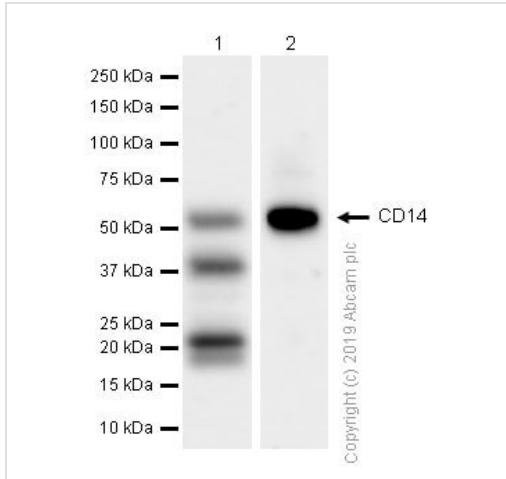
Goat Anti-Rabbit IgG H&L (HRP) (**ab97051**) at 1/20000 dilution

Predicted band size: 40 kDa

Observed band size: 43 kDa

Exposure time: 1 second

Blocking and diluting buffer: 5% NFDm/TBST



Western blot - Anti-CD14 antibody [EPR3653] (ab133335)

All lanes : Anti-CD14 antibody [EPR3653] (ab133335) at 1/1000 dilution

Lane 1 : Human tonsil lysates prepared in RIPA lysis method

Lane 2 : Human tonsil lysates prepared in 1%SDS Hot lysis method

Lysates/proteins at 20 µg per lane.

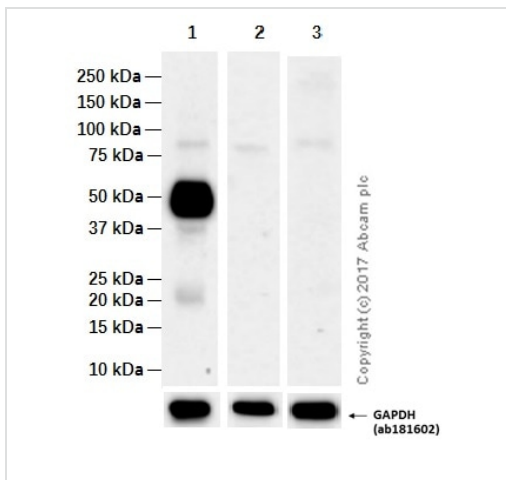
Secondary

All lanes : Goat Anti-Rabbit IgG (HRP) with minimal cross-reactivity with human IgG at 1/2000 dilution

Predicted band size: 40 kDa

Exposure time: 45 seconds

Blocking/Diluting buffer and concentration: 5% NFDm/TBST



Western blot - Anti-CD14 antibody [EPR3653] (ab133335)

All lanes : Anti-CD14 antibody [EPR3653] (ab133335) at 1/1000 dilution (purified)

Lane 1 : Human tonsil tissue lysate prepared in 1% SDS Hot lysis method

Lane 2 : HeLa (Human cervix adenocarcinoma) whole cell lysate

Lane 3 : U-937 (Human histiocytic lymphoma) whole cell lysate

Lysates/proteins at 20 µg per lane.

Secondary

Lane 1 : Goat Anti-Rabbit IgG (HRP) with minimal cross-reactivity with human IgG at 1/2000 dilution

Lanes 2-3 : Goat Anti-Rabbit IgG H&L (HRP) (**ab97051**) at 1/20000 dilution

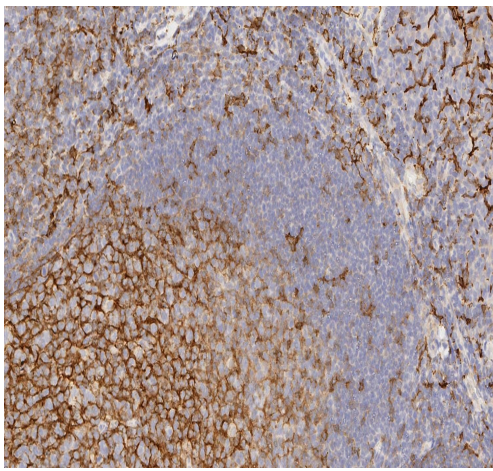
Predicted band size: 40 kDa

Observed band size: 53 kDa

Exposure time: 3 minutes

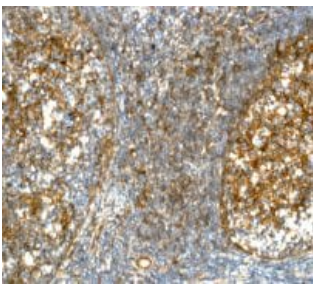
Blocking and diluting buffer: 5% NFDN/TBST

The expression level in HeLa and U-937 are low (PMID: 9886426 and 15730927)



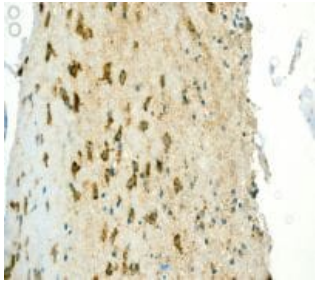
Immunohistochemistry (Formalin/PFA-fixed paraffin-embedded sections) - Anti-CD14 antibody [EPR3653] (ab133335)

Immunohistochemical analysis of Formalin-fixed, paraffin-embedded human tonsil tissue labelling CD14 with ab133335 (unpurified) at 1/500 dilution. No blocking step performed. Anti-Rabbit HRP polymer was used as the secondary detection system. Heat-mediated antigen retrieval was performed using EDTA based pH 9.0 buffer.



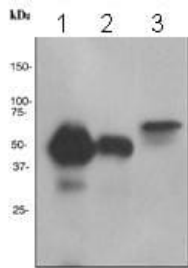
Immunohistochemistry (Formalin/PFA-fixed paraffin-embedded sections) - Anti-CD14 antibody [EPR3653] (ab133335)

Immunohistochemical analysis of Formalin-fixed, paraffin-embedded Human tonsil tissue labelling CD14 with ab133335 (unpurified) at 1/500 dilution. Heat mediated antigen retrieval was performed before commencing with IHC staining protocol.



Immunohistochemistry (Formalin/PFA-fixed paraffin-embedded sections) - Anti-CD14 antibody [EPR3653] (ab133335)

Immunohistochemical analysis of Formalin-fixed, paraffin-embedded Human placenta tissue labelling CD14 with ab133335 (unpurified) at 1/500 dilution. Heat mediated antigen retrieval was performed before commencing with IHC staining protocol.



Western blot - Anti-CD14 antibody [EPR3653] (ab133335)

All lanes : Anti-CD14 antibody [EPR3653] (ab133335) at 1/1000 dilution (unpurified)

Lane 1 : PBMC cell lysate prepared in 1% SDS Hot lysis method

Lane 2 : Human tonsil tissue lysate prepared in 1%SDS Hot lysis method

Lane 3 : SW480 cell lysate prepared in 1%SDS Hot lysis method

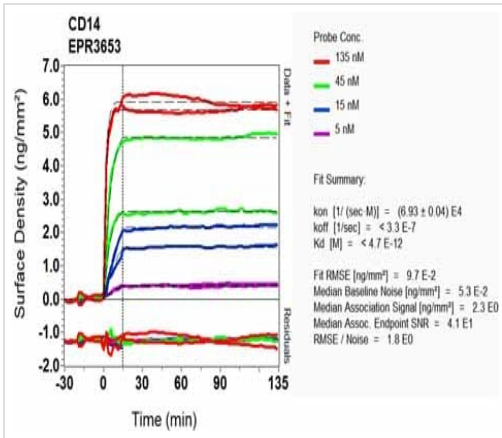
Lysates/proteins at 10 µg per lane.

Secondary

All lanes : Goat Anti-rabbit HRP at 1/2000 dilution

Predicted band size: 40 kDa

Observed band size: 53 kDa



OI-RD Scanning - Anti-CD14 antibody [EPR3653]
(ab133335)

Equilibrium disassociation constant (K_D)

Learn more about K_D

[Click here to learn more about \$K_D\$](#)

Tissue Microarray (TMA) data for ab133335			
Normal tissue samples		Malignant tissue samples	
Human cardiac muscle	x	Human placenta	x (immune cells ✓)
Human cerebellum	x	Human skeletal muscle	x (immune cells ✓)
Human colon	x (immune cells ✓)	Human skin	x (immune cells ✓)
Human endometrium	x (immune cells ✓)	Human spleen	x (immune cells ✓)
Human kidney	x (immune cells ✓)	Human stomach	x (immune cells ✓)
Human liver	x (immune cells ✓)	Human testis	x (immune cells ✓)
Human lung	x (immune cells ✓)	Human thyroid	x
Human mammary gland	x (immune cells ✓)	Human tonsil	x (immune cells ✓)
Human pancreas	x (immune cells ✓)		
		Clear cell carcinoma of human kidney	x (immune cells ✓)
		Human bladder cancer	
		Human breast carcinoma	x (immune cells ✓)
		Human cervical carcinoma	x (immune cells ✓)
		Human colon carcinoma	x (immune cells ✓)
		Human endometrial carcinoma	x (immune cells ✓)
		Human gastric adenocarcinoma	x (immune cells ✓)
		Human glioma	✓
		Human hepatocellular carcinoma	x (immune cells ✓)
		Human lung carcinoma	x (immune cells ✓)
		Human ovarian carcinoma	x (immune cells ✓)
		Human pancreatic carcinoma	x (immune cells ✓)
		Human prostatic hyperplasia	x (immune cells ✓)
		Human thyroid carcinoma	x

Tissue Microarrays stained for "Anti-CD14 antibody [EPR3653]" using "ab133335" in immunohistochemical analysis. This table provides a detailed overview of positive (tick mark) and negative (cross mark) staining per sample type tested. The sections were pre-treated using Heat mediated antigen retrieval using Bond™ Epitope Retrieval Solution 2 (pH 9.0) for 20 minutes. The sections were incubated with ab133335 for 30 mins at room temperature followed by a ready to use Rabbit specific IHC polymer detection kit HRP/DAB (**ab209101**). The immunostaining was performed on a Leica Biosystems BOND® RX instrument.

Immunohistochemistry (Formalin/PFA-fixed paraffin-embedded sections) - Anti-CD14 antibody [EPR3653] (ab133335)

Why choose a recombinant antibody?

Research with confidence
Consistent and reproducible results

Long-term and scalable supply
Recombinant technology

Success from the first experiment
Confirmed specificity

Ethical standards compliant
Animal-free production

Anti-CD14 antibody [EPR3653] (ab133335)

Our Abpromise to you: Quality guaranteed and expert technical support

- Replacement or refund for products not performing as stated on the datasheet
- Valid for 12 months from date of delivery
- Response to your inquiry within 24 hours

- We provide support in Chinese, English, French, German, Japanese and Spanish
- Extensive multi-media technical resources to help you
- We investigate all quality concerns to ensure our products perform to the highest standards

If the product does not perform as described on this datasheet, we will offer a refund or replacement. For full details of the Abpromise, please visit <https://www.abcam.co.jp/abpromise> or contact our technical team.

Terms and conditions

- Guarantee only valid for products bought direct from Abcam or one of our authorized distributors