

Anti-CD14 antibody [EPR3652] ab133503

リコンビナント RabMAb[®]

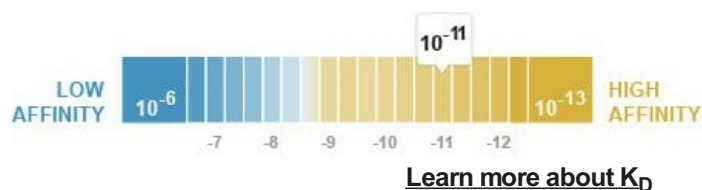
3 References [画像数 7](#)

製品の概要

| | |
|--------------|----------------------------------------------------------------------------------------------------------------------------------------------------------------------------------------------------------------------------------------------------------------------------------------------------------------------------------------------------------------------------------------------------------------------------------------------------------------------------------------------------------------------------------------------------------------------------------------------------------------------------------------------------------------------------------------------------------------------------------------------------------------------------------|
| 製品名 | Anti-CD14 antibody [EPR3652] |
| 製品の詳細 | Rabbit monoclonal [EPR3652] to CD14 |
| 由来種 | Rabbit |
| アプリケーション | 適用あり: Flow Cyt, IHC-P |
| 種交差性 | 交差種: Human |
| 免疫原 | Synthetic peptide within Human CD14 aa 1-100 (extracellular). The exact sequence is proprietary. |
| ポジティブ・コントロール | IHC-P: Human colon and tonsil tissues. Flow Cytometry: Human PBMCs |
| 特記事項 | <p>This product is a recombinant monoclonal antibody, which offers several advantages including:</p> <ul style="list-style-type: none"> - High batch-to-batch consistency and reproducibility - Improved sensitivity and specificity - Long-term security of supply - Animal-free production <p>For more information see here.</p> <p>Our RabMAb[®] technology is a patented hybridoma-based technology for making rabbit monoclonal antibodies. For details on our patents, please refer to RabMAb[®] patents.</p> <p>Mouse, Rat: We have preliminary internal testing data to indicate this antibody may not react with these species. Please contact us for more information.</p> |

製品の特性

| | |
|-------------------------|-----------------------------------------------------------------------------------------------------------------------------|
| 製品の状態 | Liquid |
| 保存方法 | Shipped at 4°C. Store at +4°C short term (1-2 weeks). Upon delivery aliquot. Store at -20°C. Stable for 12 months at -20°C. |
| 解離定数 (K _D 値) | K _D = 3.10 x 10 ⁻¹¹ M |



| | |
|--------|---------------------------------------------------------------------------------------------------------------------|
| バッファー | pH: 7.2 Preservative: 0.01% Sodium azide Constituents: 40% Glycerol (glycerin, glycerine), 0.05% BSA, 59% PBS |
| 精製度 | Protein A purified |
| ポリ/モノ | モノクローナル |
| クローン名 | EPR3652 |
| アイソタイプ | IgG |

アプリケーション

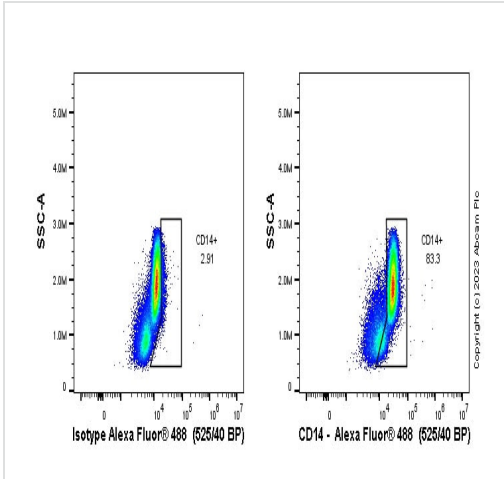
The Abpromise guarantee Abpromise保証は、次のテスト済みアプリケーションにおけるab133503の使用に適用されず
アプリケーションノートには、推奨の開始希釈率がありますが、適切な希釈率につきましてはご検討ください。

| アプリケーション | Abreviews | 特記事項 |
|----------|-----------|---------------------------------------------------------------------------------------------------------------------------------------------------------------------------------------------------|
| Flow Cyt | | 1/100. ab172730 - Rabbit monoclonal IgG, is suitable for use as an isotype control with this antibody. |
| IHC-P | | 1/500. Perform heat mediated antigen retrieval before commencing with IHC staining protocol. See <u>IHC antigen retrieval protocols.</u> For unpurified use at 1/100 - 1/250. |

ターゲット情報

| | |
|-------|----------------------------------------------------------------------------------------------------------------------------------------------------------------------------------------------------------------------------------------------------------------------------------------------------|
| 機能 | Cooperates with MD-2 and TLR4 to mediate the innate immune response to bacterial lipopolysaccharide (LPS). Acts via MyD88, TIRAP and TRAF6, leading to NF-kappa-B activation, cytokine secretion and the inflammatory response. Up-regulates cell surface molecules, including adhesion molecules. |
| 組織特異性 | Expressed strongly on the surface of monocytes and weakly on the surface of granulocytes; also expressed by most tissue macrophages. |
| 配列類似性 | Contains 11 LRR (leucine-rich) repeats. |
| 翻訳後修飾 | N- and O- glycosylated. O-glycosylated with a core 1 or possibly core 8 glycan. |
| 細胞内局在 | Cell membrane. |

画像

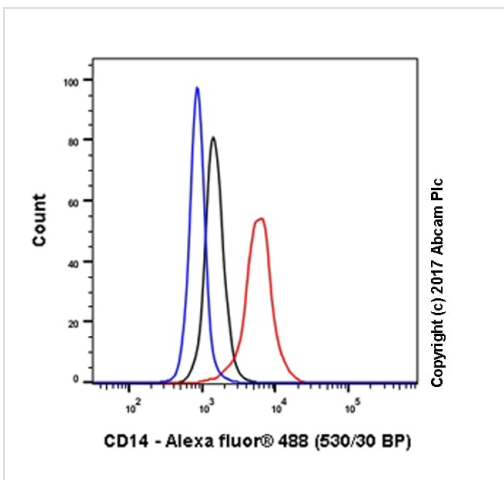


Flow Cytometry - Anti-CD14 antibody [EPR3652]
(ab133503)

Flow cytometry staining of human peripheral blood mononuclear cells (PBMCs) with ab133503 (right) or Recombinant Rabbit IgG, monoclonal [EPR25A] - Isotype Control (left). PBMCs were incubated for 30 min on ice in 1x PBS containing 10 µg/ml human IgG and 10 % normal goat serum to block FC receptors and non-specific protein-protein interaction followed by the antibody ab133503 or Recombinant Rabbit IgG, monoclonal [EPR25A] - Isotype Control (1x 10⁶ in 100 µl at 1.0 µg/ml (1/2300)) for 30min on ice.

The secondary antibody Goat Anti-Rabbit IgG H&L (Alexa Fluor® 488) preadsorbed was incubated at 1/4000 for 30min on ice

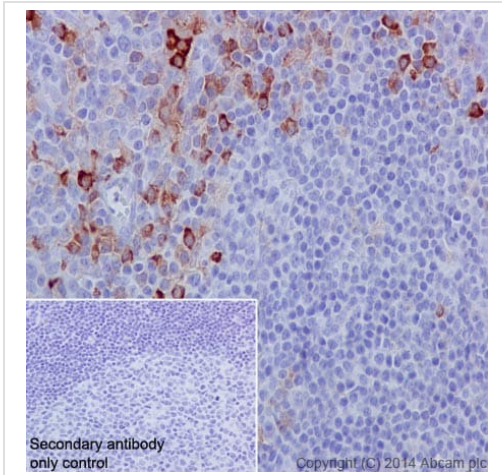
Acquisition of >30000 events were collected using a 50 mW Blue laser (488nm) and 525/40 bandpass filter. Events were gated on CD3 and CD19 negative cells.



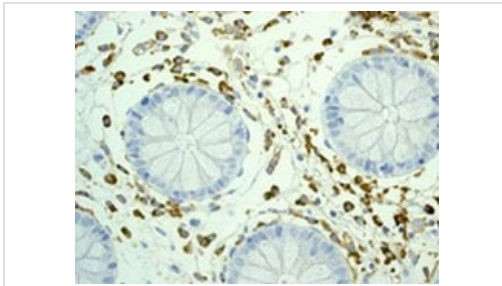
Flow Cytometry - Anti-CD14 antibody [EPR3652]
(ab133503)

Human whole blood was stained with anti-CD14 antibody ab133503 (red line). In brief, the erythrocytes were lysed and the cells were then stained with anti-CD14 (ab133503) for 30 min at 4°C. The secondary antibody used was Alexa Fluor® 488 goat anti-rabbit IgG (H&L) (**ab150077**) at 1/2000 dilution for 30 min at 4°C. Isotype control antibody (black line) was rabbit IgG (monoclonal) (**ab172730**) used at the same concentration and conditions as the primary antibody. Unlabelled sample (blue line) was also used as a control.

Acquisition of >30,000 total events were collected. Gating strategy - peripheral blood monocytes

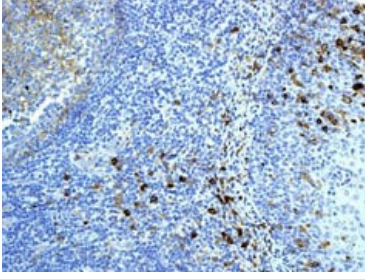


Immunohistochemistry (Formalin/PFA-fixed paraffin-embedded sections) - Anti-CD14 antibody
[EPR3652] (ab133503)



Immunohistochemistry (Formalin/PFA-fixed paraffin-embedded sections) - Anti-CD14 antibody
[EPR3652] (ab133503)

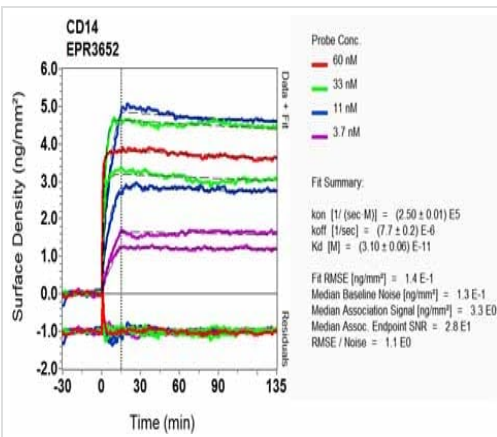
Immunohistochemistry (Formalin/PFA-fixed paraffin-embedded sections) analysis of human colon tissue labelling CD14 with unpurified ab133503 at a dilution of 1/100. Perform heat mediated antigen retrieval before commencing with IHC staining protocol.



Immunohistochemistry (Formalin/PFA-fixed paraffin-embedded sections) - Anti-CD14 antibody [EPR3652] (ab133503)

Immunohistochemistry (Formalin/PFA-fixed paraffin-embedded sections) analysis of human tonsil tissue labelling CD14 with unpurified ab133503 at a dilution of 1/100.

Perform heat mediated antigen retrieval before commencing with IHC staining protocol.



SPR Scanning - Anti-CD14 antibody [EPR3652] (ab133503)

Equilibrium dissociation constant (K_D)

Learn more about K_D

[Click here to learn more about \$K_D\$](#)

Why choose a recombinant antibody?

- Research with confidence**
Consistent and reproducible results
- Long-term and scalable supply**
Recombinant technology
- Success from the first experiment**
Confirmed specificity
- Ethical standards compliant**
Animal-free production

Anti-CD14 antibody [EPR3652] (ab133503)

Please note: All products are "FOR RESEARCH USE ONLY. NOT FOR USE IN DIAGNOSTIC PROCEDURES"

Our Promise to you: Quality guaranteed and expert technical support

- Replacement or refund for products not performing as stated on the datasheet
- Valid for 12 months from date of delivery
- Response to your inquiry within 24 hours

- We provide support in Chinese, English, French, German, Japanese and Spanish
- Extensive multi-media technical resources to help you
- We investigate all quality concerns to ensure our products perform to the highest standards

If the product does not perform as described on this datasheet, we will offer a refund or replacement. For full details of the Abpromise, please visit <https://www.abcam.co.jp/abpromise> or contact our technical team.

Terms and conditions

- Guarantee only valid for products bought direct from Abcam or one of our authorized distributors