

### Anti-CD137 antibody [EPR23218-111] ab243648

リコンビナント **RabMAb**

#### 1 References [画像数 7](#)

#### 製品の概要

製品名	Anti-CD137 antibody [EPR23218-111]
製品の詳細	Rabbit monoclonal [EPR23218-111] to CD137
由来種	Rabbit
アプリケーション	<b>適用あり:</b> ICC/IF, IP, Flow Cyt, WB <b>適用なし:</b> IHC-P
種交差性	<b>交差種:</b> Mouse
免疫原	Recombinant fragment. This information is proprietary to Abcam and/or its suppliers.
ポジティブ・コントロール	WB: His-tagged mouse CD137 recombinant protein(aa24-187); mouse splenocyte lysate (+/- Con A treatment). ICC/IF: Mouse splenocytes treated with Con A; HEK-293T cells transfected with GFP-tagged mouse CD137 expression vector. Flow cyt: Mouse splenocytes treated with Con A. IP: Mouse splenocyte whole cell lysate (Con A treated).
特記事項	<p>This product is a recombinant monoclonal antibody, which offers several advantages including:</p> <ul style="list-style-type: none"> <li>- High batch-to-batch consistency and reproducibility</li> <li>- Improved sensitivity and specificity</li> <li>- Long-term security of supply</li> <li>- Animal-free production</li> </ul> <p>For more information <a href="#">see here</a>.</p> <p>Our RabMAb<sup>®</sup> technology is a patented hybridoma-based technology for making rabbit monoclonal antibodies. For details on our patents, please refer to <a href="#">RabMAb<sup>®</sup> patents</a>.</p>

#### 製品の特性

製品の状態	Liquid
保存方法	Shipped at 4°C. Store at +4°C short term (1-2 weeks). Upon delivery aliquot. Store at -20°C long term. Avoid freeze / thaw cycle.
バッファー	pH: 7.2 Preservative: 0.01% Sodium azide Constituents: PBS, 40% Glycerol (glycerin, glycerine), 0.05% BSA
精製度	Protein A purified
ポリ/モノ	モノクローナル

クローン名 EPR23218-111  
アイソタイプ IgG

## アプリケーション

**The Abpromise guarantee** Abpromise保証は、 次のテスト済みアプリケーションにおけるab243648の使用に適用されます  
アプリケーションノートには、推奨の開始希釈率がありますが、適切な希釈率につきましてはご検討ください。

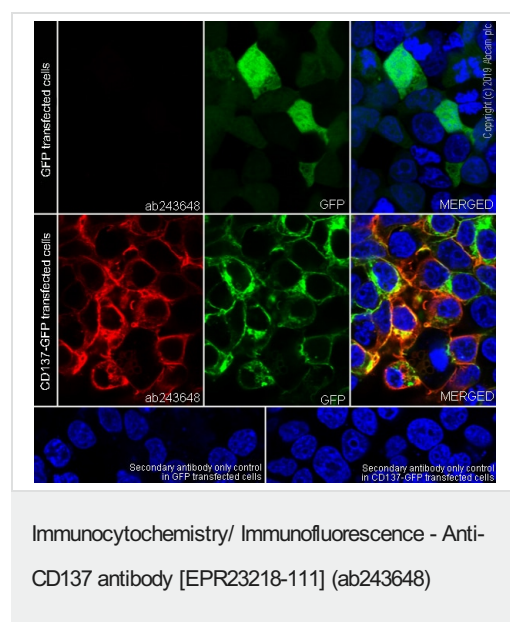
アプリケーション	Abreviews	特記事項
ICC/IF		1/100.
IP		1/30.
Flow Cyt		1/500.
WB		1/1000. Predicted molecular weight: 28 kDa.

**追加情報** Is unsuitable for IHC-P.

## ターゲット情報

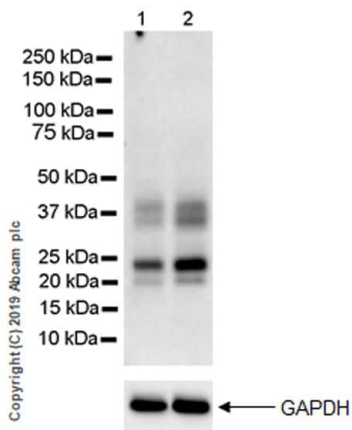
**機能** Receptor for TNFSF14/4-1BBL. Possibly active during T cell activation.  
**組織特異性** Expressed on the surface of activated T-cells.  
**配列類似性** Contains 4 TNFR-Cys repeats.  
**細胞内局在** Membrane.

## 画像



Immunofluorescent analysis of 4% Paraformaldehyde-fixed, 0.1% TritonX-100 permeabilized HEK-293T cells labelling CD137 with ab243648 at 1/100 dilution, followed by **ab150080** Goat Anti-Rabbit IgG H&L (Alexa Fluor® 594) antibody at 1/1000 dilution (Red). Confocal image showing cytoplasmic and membranous staining in HEK-293T cells transfected with a GFP-tagged CD137 expression vector - the GFP tag is shown in Green. The Nuclear counterstain was DAPI (Blue).

Secondary antibody only control: Secondary antibody is **ab150080** Goat Anti-Rabbit IgG H&L (Alexa Fluor® 594) at 1/1000 dilution.



Western blot - Anti-CD137 antibody [EPR23218-111] (ab243648)

**All lanes** : Anti-CD137 antibody [EPR23218-111] (ab243648) at 1/1000 dilution

**Lane 1** : Untreated mouse splenocytes, whole cell lysate

**Lane 2** : Mouse splenocytes (treated with 2.5 µg/ml Concanavalin A for 72 hours), whole cell lysate

Lysates/proteins at 20 µg per lane.

## Secondary

**All lanes** : Goat Anti-Rabbit IgG H&L (HRP) ([ab97051](#)) at 1/50000 dilution

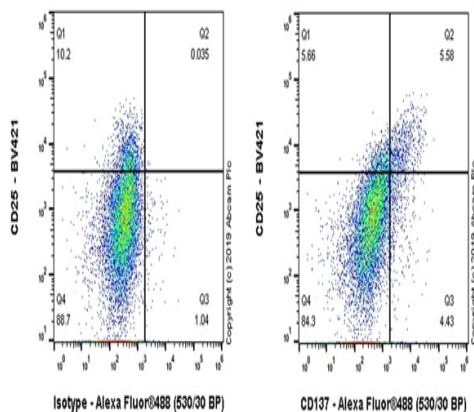
**Predicted band size:** 28 kDa

**Observed band size:** 21-24,36-40 kDa

Blocking and diluting buffer and concentration: 5% NFDM/TBST.

CD137 is a type I transmembrane glycoprotein and has both monomeric and dimeric forms on the surface of activated T cells (PMID: 30355497).

Exposure time: 3 minutes.



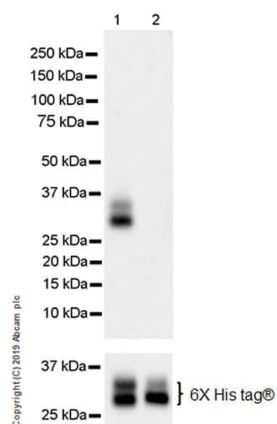
Flow Cytometry - Anti-CD137 antibody [EPR23218-111] (ab243648)

Flow cytometric analysis of Mouse splenocytes (treated with 2.5ug/ml concanavalin A for 72h) cells labelling CD137 with ab243648 at 1/500 (Right) compared with a Rabbit monoclonal IgG ([ab172730](#)) isotype control (Left).

Goat anti rabbit IgG (Alexa Fluor® 488, [ab150077](#)) at 1/2000 dilution was used as the secondary antibody.

Cells were stained with rabbit IgG (Left) or ab243648 (Right), then stained with anti-CD25 conjugated to BV421.

Gated on viable cells.



Western blot - Anti-CD137 antibody [EPR23218-111] (ab243648)

**All lanes :** Anti-CD137 antibody [EPR23218-111] (ab243648) at 1/1000 dilution

**Lane 1 :** His-tagged mouse CD137 recombinant protein(aa24-187), 10 ng

**Lane 2 :** His-tagged human CD137 recombinant protein(aa24-186), 10 ng

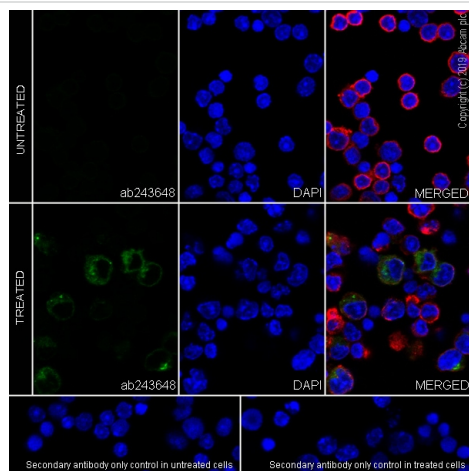
#### Secondary

**All lanes :** Goat Anti-Rabbit IgG H&L (HRP) ([ab97051](#)) at 1/100000 dilution

**Predicted band size:** 28 kDa

Blocking and diluting buffer and concentration: 5% NFDM/TBST.

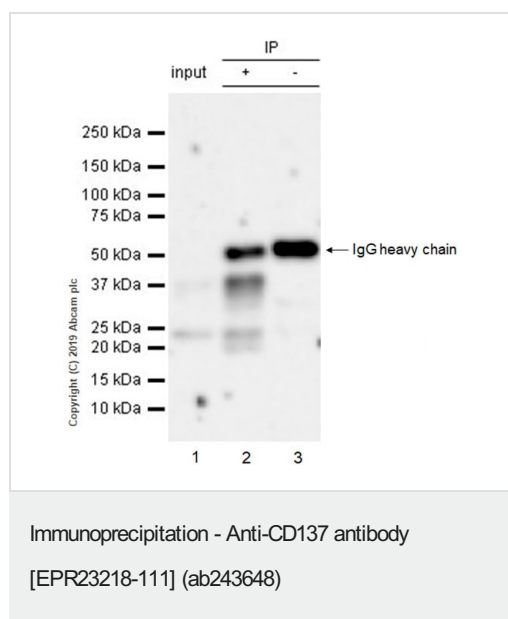
Exposure time: 15 seconds.



Immunocytochemistry/ Immunofluorescence - Anti-CD137 antibody [EPR23218-111] (ab243648)

Immunofluorescent analysis of 4% Paraformaldehyde-fixed, 0.1% TritonX-100 permeabilized Mouse splenocytes cells labelling CD137 with ab243648 at 1/100 dilution, followed by [ab150077](#) Goat Anti-Rabbit IgG H&L (Alexa Fluor® 488) antibody at 1/1000 dilution (Green). Confocal image showing cytoplasmic and membranous staining in mouse splenocytes treated with Concanavalin A (2.5 ug/ml) for 72 h. [ab195889](#) Anti-alpha Tubulin antibody [DM1A] - Microtubule Marker (Alexa Fluor® 594) was used to counterstain tubulin at 1/200 dilution (Red). The Nuclear counterstain was DAPI (Blue).

Secondary antibody only control: Secondary antibody is [ab150077](#) Goat Anti-Rabbit IgG H&L (Alexa Fluor® 488) at 1/1000 dilution.



CD137 was immunoprecipitated from 0.35 mg mouse splenocyte (treated with 2.5 µg/ml Concanavalin A for 72 hours) whole cell lysate with ab243648 at 1/30 dilution. Western blot was performed on the immunoprecipitate using ab243648 at 1/1000 dilution. VeriBlot for IP Detection Reagent (HRP)([ab131366](#)) was used at 1/5000 dilution.

Lane 1: Mouse splenocyte (treated with 2.5 µg/ml Concanavalin A for 72 hours) whole cell lysate 10 µg

Lane 2: ab243648 IP in Mouse splenocyte (treated as above) whole cell lysate

Lane 3: Rabbit monoclonal IgG ([ab172730](#)) instead of ab243648 in Mouse splenocyte (treated as above) whole cell lysate

Blocking and dilution buffer and concentration: 5% NFDm/TBST.

Exposure time: 76 seconds.

CD137 is a type I transmembrane glycoprotein and has both monomeric and dimeric forms on the surface of activated T cells (PMID: 30355497).

Why choose a recombinant antibody?

**Research with confidence**  
Consistent and reproducible results

**Long-term and scalable supply**  
Recombinant technology

**Success from the first experiment**  
Confirmed specificity

**Ethical standards compliant**  
Animal-free production

Anti-CD137 antibody [EPR23218-111] (ab243648)

**Please note:** All products are "FOR RESEARCH USE ONLY. NOT FOR USE IN DIAGNOSTIC PROCEDURES"

**Our Abpromise to you: Quality guaranteed and expert technical support**

- Replacement or refund for products not performing as stated on the datasheet
- Valid for 12 months from date of delivery
- Response to your inquiry within 24 hours
- We provide support in Chinese, English, French, German, Japanese and Spanish
- Extensive multi-media technical resources to help you
- We investigate all quality concerns to ensure our products perform to the highest standards

If the product does not perform as described on this datasheet, we will offer a refund or replacement. For full details of the Abpromise, please visit <https://www.abcam.co.jp/abpromise> or contact our technical team.

#### **Terms and conditions**

---

- Guarantee only valid for products bought direct from Abcam or one of our authorized distributors