


# Anti-CD130 (gp130) antibody - C-terminal ab227058

画像数 3

## 製品の概要

製品名	Anti-CD130 (gp130) antibody - C-terminal
製品の詳細	Rabbit polyclonal to CD130 (gp130) - C-terminal
由来種	Rabbit
アプリケーション	<b>適用あり:</b> WB, IHC-P, ICC/IF
種交差性	<b>交差種:</b> Human <b>交差が予測される動物種:</b> Mouse, Rat, Dog, Pig, Rhesus monkey 
免疫原	Recombinant fragment within Human CD130 (gp130) (C terminal). The exact sequence is proprietary. Database link: <a href="#">P40189</a>
ポジティブ・コントロール	WB: HepG2 whole cell lysate ( <a href="#">ab7900</a> ). IHC-P: J5 xenograft tissue. ICC/IF: HeLa cells.
特記事項	<p>The Life Science industry has been in the grips of a reproducibility crisis for a number of years. Abcam is leading the way in addressing this with our range of recombinant monoclonal antibodies and knockout edited cell lines for gold-standard validation. Please check that this product meets your needs before purchasing.</p> <p>If you have any questions, special requirements or concerns, please send us an inquiry and/or contact our Support team ahead of purchase. Recommended alternatives for this product can be found below, along with publications, customer reviews and Q&amp;As</p>

## 製品の特性

製品の状態	Liquid
保存方法	Shipped at 4°C. Store at +4°C short term (1-2 weeks). Upon delivery aliquot. Store at -20°C long term. Avoid freeze / thaw cycle.
バッファー	pH: 7.00 Preservative: 0.025% Proclin 300 Constituents: 78% PBS, 1% BSA, 20% Glycerol (glycerin, glycerine)
精製度	Immunogen affinity purified
ポリ/モノ	ポリクローナル
アイソタイプ	IgG

## アプリケーション

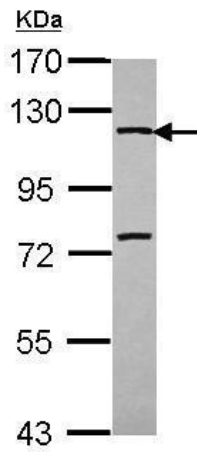
The Abpromise guarantee      Abpromise保証は、 次のテスト済みアプリケーションにおけるab227058の使用に適用されます  
アプリケーションノートには、推奨の開始希釈率がありますが、適切な希釈率につきましてはご検討ください。

アプリケーション	Abreviews	特記事項
WB		1/500 - 1/3000. Predicted molecular weight: 37,96,104 kDa.
IHC-P		1/100 - 1/1000.
ICC/IF		1/100 - 1/1000.

## ターゲット情報

機能	Signal-transducing molecule. The receptor systems for IL6, LIF, OSM, CNTF, IL11, CTF1 and BSF3 can utilize gp130 for initiating signal transmission. Binds to IL6/IL6R (alpha chain) complex, resulting in the formation of high-affinity IL6 binding sites, and transduces the signal. Does not bind IL6. May have a role in embryonic development (By similarity). The type I OSM receptor is capable of transducing OSM-specific signaling events.
組織特異性	Found in all the tissues and cell lines examined. Expression not restricted to IL6 responsive cells.
配列類似性	Belongs to the type I cytokine receptor family. Type 2 subfamily. Contains 5 fibronectin type-III domains. Contains 1 Ig-like C2-type (immunoglobulin-like) domain.
ドメイン	The WSXWS motif appears to be necessary for proper protein folding and thereby efficient intracellular transport and cell-surface receptor binding. The box 1 motif is required for JAK interaction and/or activation.
翻訳後修飾	Phosphorylation of Ser-782 down-regulates cell surface expression. Heavily N-glycosylated.
細胞内局在	Secreted and Cell membrane.

## 画像



Western blot - Anti-CD130 (gp130) antibody - C-terminal (ab227058)

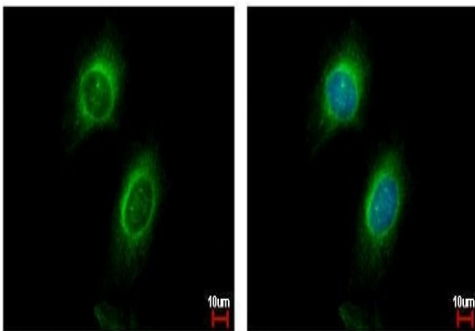
Anti-CD130 (gp130) antibody - C-terminal (ab227058) at 1/1000 dilution + HepG2 (human liver hepatocellular carcinoma cell line) whole cell lysate at 30 µg

#### Secondary

HRP-conjugated anti-rabbit IgG

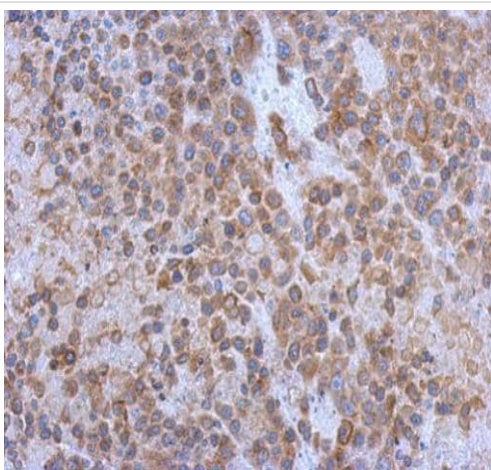
**Predicted band size:** 37,96,104 kDa

7.5% SDS-PAGE gel.



Immunocytochemistry/ Immunofluorescence - Anti-CD130 (gp130) antibody - C-terminal (ab227058)

HeLa (human epithelial cell line from cervix adenocarcinoma) cells labeling CD130 (gp130) (green) using ab227058 in ICC/IF. Cells were fixed in ice-cold methanol for 5 minutes. Nuclear counterstain: Hoechst 33342.



Immunohistochemistry (Formalin/PFA-fixed paraffin-embedded sections) - Anti-CD130 (gp130) antibody - C-terminal (ab227058)

Paraffin-embedded human J5 xenograft tissue stained for CD130 (gp130) using ab227058 at 1/500 dilution in immunohistochemical analysis.

**Please note:** All products are "FOR RESEARCH USE ONLY. NOT FOR USE IN DIAGNOSTIC PROCEDURES"

### **Our Abpromise to you: Quality guaranteed and expert technical support**

---

- Replacement or refund for products not performing as stated on the datasheet
- Valid for 12 months from date of delivery
- Response to your inquiry within 24 hours
  
- We provide support in Chinese, English, French, German, Japanese and Spanish
- Extensive multi-media technical resources to help you
- We investigate all quality concerns to ensure our products perform to the highest standards

If the product does not perform as described on this datasheet, we will offer a refund or replacement. For full details of the Abpromise, please visit <https://www.abcam.co.jp/abpromise> or contact our technical team.

### **Terms and conditions**

---

- Guarantee only valid for products bought direct from Abcam or one of our authorized distributors