

Anti-CD11b antibody [SP331] - C-terminal ab224800

リコンビナント RabMAb

画像数 15

製品の概要

製品名	Anti-CD11b antibody [SP331] - C-terminal
製品の詳細	Rabbit monoclonal [SP331] to CD11b - C-terminal
由来種	Rabbit
アプリケーション	適用あり: WB, IHC-P 適用なし: Flow Cyt or ICC/IF
種交差性	交差種: Human
免疫原	Synthetic peptide. This information is proprietary to Abcam and/or its suppliers.
ポジティブ・コントロール	WB: TF-1 cell lysate. IHC-P: Human tonsil, colon, spleen, thymus, lymph node, lung, HK lymphoma, colon adenocarcinoma, lung squamous cell carcinoma, pancreatic adenocarcinoma, skin squamous cell carcinoma tissues.
特記事項	This product is FOR RESEARCH USE ONLY. For commercial use, please contact partnerships@abcam.com.

製品の特性

製品の状態	Liquid
保存方法	Shipped at 4°C. Store at +4°C short term (1-2 weeks). Upon delivery aliquot. Store at -20°C long term. Avoid freeze / thaw cycle.
バッファー	pH: 7.60 Preservative: 0.1% Sodium azide Constituents: PBS, 1% BSA
精製度	Protein A/G purified
特記事項(精製)	Purified from TCS by protein A/G.
ポリ/モノ	モノクローナル
クローン名	SP331
アイソタイプ	IgG

アプリケーション

The Abpromise guarantee

Abpromise保証は、次のテスト済みアプリケーションにおけるab224800の使用に適用されます

アプリケーションノートには、推奨の開始希釈率がありますが、適切な希釈率につきましてはご検討ください。

アプリケーション	Abreviews	特記事項
WB		1/400. Predicted molecular weight: 127 kDa.
IHC-P		1/100. Perform heat mediated antigen retrieval with citrate buffer pH 6 before commencing with IHC staining protocol.

追加情報

Is unsuitable for Flow Cyt or ICC/IF.

ターゲット情報

機能

Integrin alpha-M/beta-2 is implicated in various adhesive interactions of monocytes, macrophages and granulocytes as well as in mediating the uptake of complement-coated particles. It is identical with CR-3, the receptor for the iC3b fragment of the third complement component. It probably recognizes the R-G-D peptide in C3b. Integrin alpha-M/beta-2 is also a receptor for fibrinogen, factor X and ICAM1. It recognizes P1 and P2 peptides of fibrinogen gamma chain.

組織特異性

Predominantly expressed in monocytes and granulocytes.

関連疾患

Genetic variations in ITGAM has been associated with susceptibility to systemic lupus erythematosus type 6 (SLEB6) [MIM:609939]. Systemic lupus erythematosus (SLE) is a chronic, inflammatory and often febrile multisystemic disorder of connective tissue. It affects principally the skin, joints, kidneys and serosal membranes. It is thought to represent a failure of the regulatory mechanisms of the autoimmune system.

配列類似性

Belongs to the integrin alpha chain family.
Contains 7 FG-GAP repeats.
Contains 1 VWFA domain.

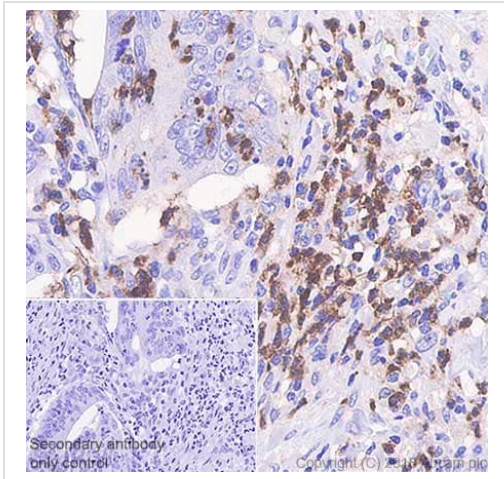
ドメイン

The integrin I-domain (insert) is a VWFA domain. Integrins with I-domains do not undergo protease cleavage.

細胞内局在

Membrane.

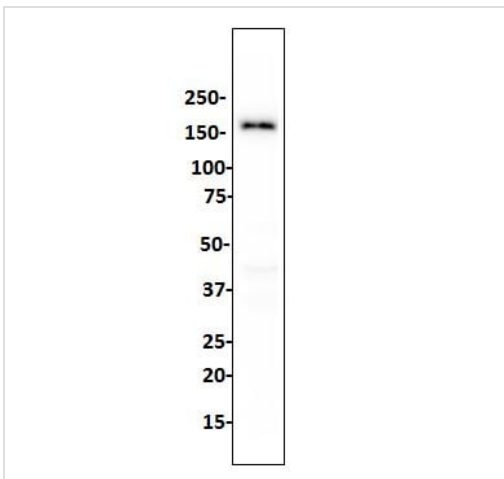
画像



Immunohistochemistry (Formalin/PFA-fixed paraffin-embedded sections) - Anti-CD11b antibody [SP331] - C-terminal (ab224800)

Immunohistochemistry (Formalin/PFA-fixed paraffin-embedded sections) analysis of Human colon carcinoma tissue sections labeling CD11b with ab224800 at 1/100 dilution (2.68 µg/ml). Heat mediated antigen retrieval with sodium citrate buffer (pH 6.0, epitope retrieval solution 1) for 10mins. Rabbit specific IHC polymer detection kit HRP/DAB (**ab209101**) was used as the secondary antibody. Hematoxylin was used as a counterstain. Positive staining on the human colon carcinoma, performed on a Leica Biosystems BOND™ RX instrument.

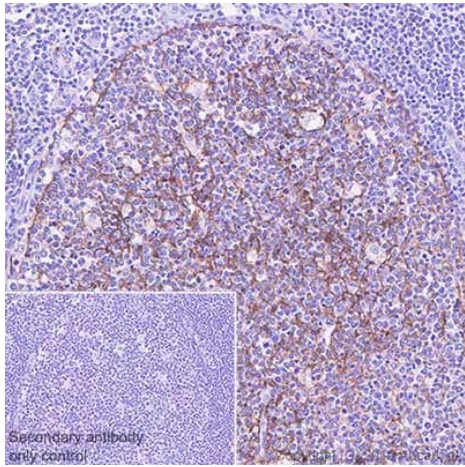
The section was incubated with ab224800 for 10 mins at room temperature.



Western blot - Anti-CD11b antibody [SP331] - C-terminal (ab224800)

Anti-CD11b antibody [SP331] - C-terminal (ab224800) at 1/400 dilution + TF-1 (human bone marrow erythroleukemia cell line) cell lysate

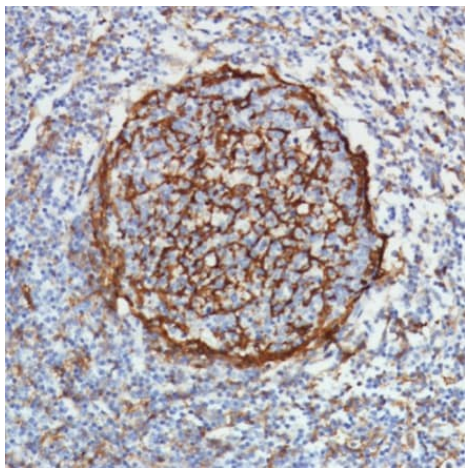
Predicted band size: 127 kDa



Immunohistochemistry (Formalin/PFA-fixed paraffin-embedded sections) - Anti-CD11b antibody [SP331]
- C-terminal (ab224800)

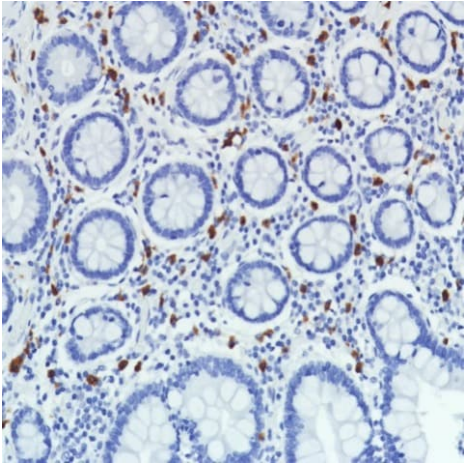
Immunohistochemistry (Formalin/PFA-fixed paraffin-embedded sections) analysis of Human tonsil tissue sections labeling CD11b with ab224800 at 1/100 dilution (2.68 µg/ml). Heat mediated antigen retrieval with sodium citrate buffer (pH 6.0, epitope retrieval solution 1) for 10mins. Rabbit specific IHC polymer detection kit HRP/DAB (**ab209101**) was used as the secondary antibody. Hematoxylin was used as a counterstain. Positive staining on the human tonsil, performed on a Leica Biosystems BOND™ RX instrument.

The section was incubated with ab224800 for 10 mins at room temperature.



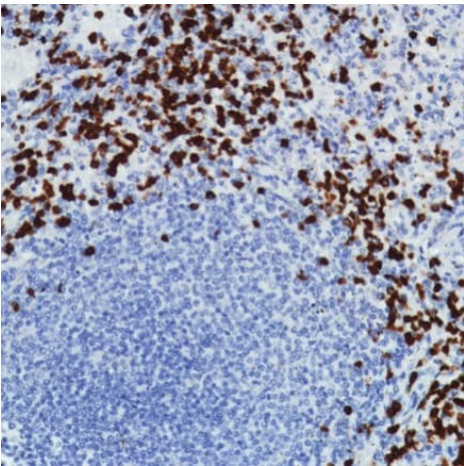
Immunohistochemistry (Formalin/PFA-fixed paraffin-embedded sections) - Anti-CD11b antibody [SP331]
- C-terminal (ab224800)

Formalin-fixed, paraffin-embedded human tonsil tissue stained for CD11b using ab224800 at 1/100 dilution in immunohistochemical analysis.



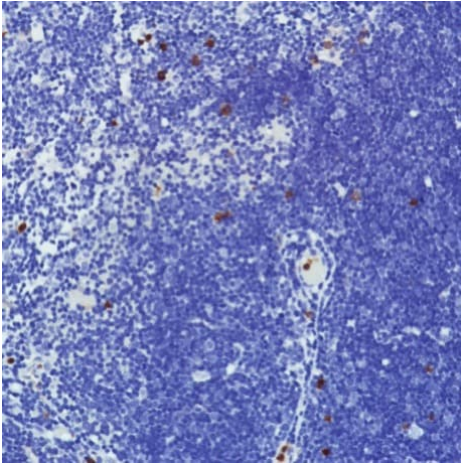
Formalin-fixed, paraffin-embedded human colon tissue stained for CD11b using ab224800 at 1/100 dilution in immunohistochemical analysis.

Immunohistochemistry (Formalin/PFA-fixed paraffin-embedded sections) - Anti-CD11b antibody [SP331]
- C-terminal (ab224800)



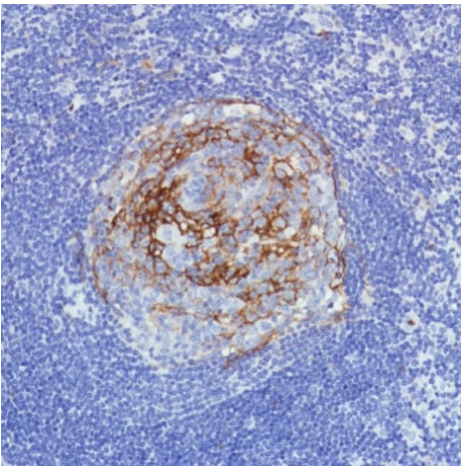
Formalin-fixed, paraffin-embedded human spleen tissue stained for CD11b using ab224800 at 1/100 dilution in immunohistochemical analysis.

Immunohistochemistry (Formalin/PFA-fixed paraffin-embedded sections) - Anti-CD11b antibody [SP331]
- C-terminal (ab224800)



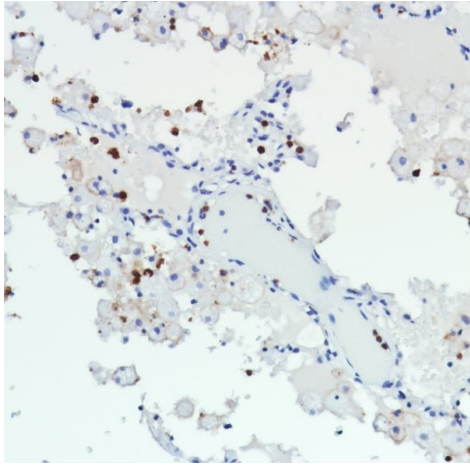
Formalin-fixed, paraffin-embedded human thymus tissue stained for CD11b using ab224800 at 1/100 dilution in immunohistochemical analysis.

Immunohistochemistry (Formalin/PFA-fixed paraffin-embedded sections) - Anti-CD11b antibody [SP331]
- C-terminal (ab224800)



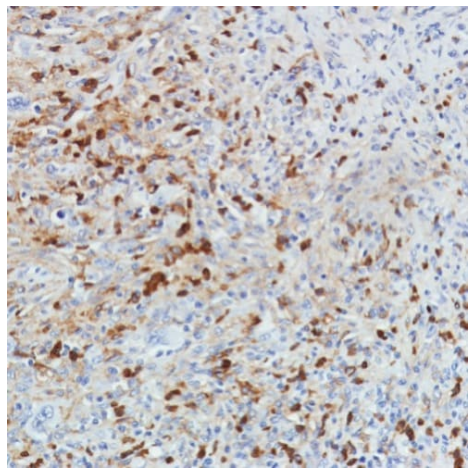
Formalin-fixed, paraffin-embedded human lymph node tissue stained for CD11b using ab224800 at 1/100 dilution in immunohistochemical analysis.

Immunohistochemistry (Formalin/PFA-fixed paraffin-embedded sections) - Anti-CD11b antibody [SP331]
- C-terminal (ab224800)



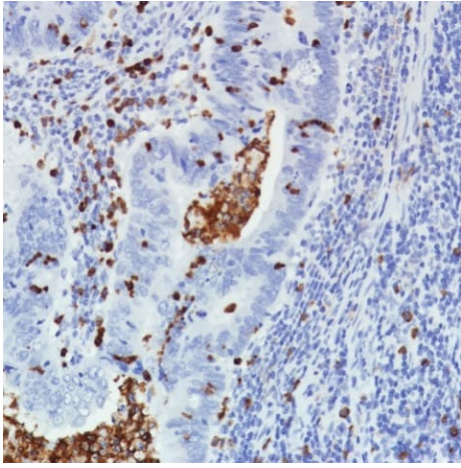
Formalin-fixed, paraffin-embedded human lung tissue stained for CD11b using ab224800 at 1/100 dilution in immunohistochemical analysis.

Immunohistochemistry (Formalin/PFA-fixed paraffin-embedded sections) - Anti-CD11b antibody [SP331]
- C-terminal (ab224800)



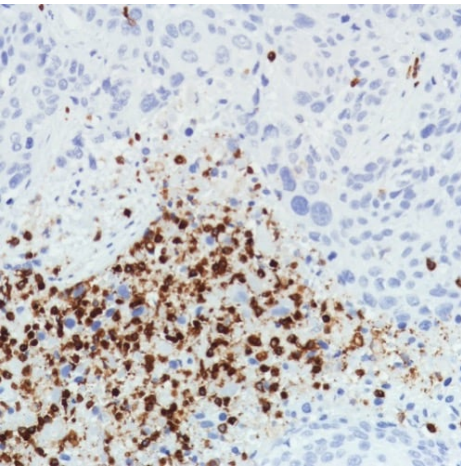
Formalin-fixed, paraffin-embedded human HK lymphoma tissue stained for CD11b using ab224800 at 1/100 dilution in immunohistochemical analysis.

Immunohistochemistry (Formalin/PFA-fixed paraffin-embedded sections) - Anti-CD11b antibody [SP331]
- C-terminal (ab224800)



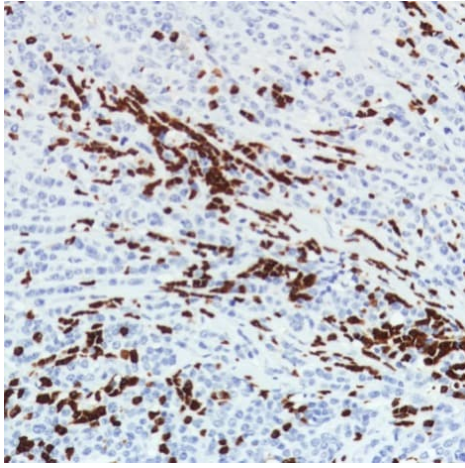
Formalin-fixed, paraffin-embedded human colon adenocarcinoma tissue stained for CD11b using ab224800 at 1/100 dilution in immunohistochemical analysis.

Immunohistochemistry (Formalin/PFA-fixed paraffin-embedded sections) - Anti-CD11b antibody [SP331]
- C-terminal (ab224800)



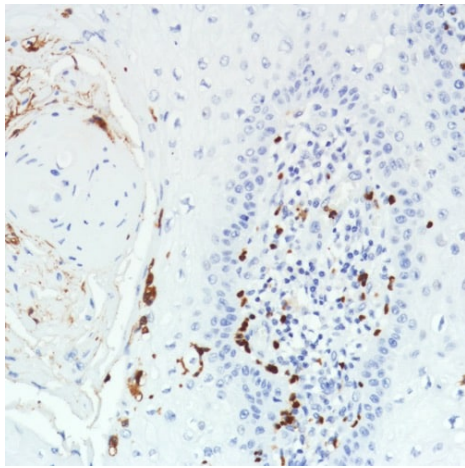
Formalin-fixed, paraffin-embedded human lung squamous cell carcinoma tissue stained for CD11b using ab224800 at 1/100 dilution in immunohistochemical analysis.

Immunohistochemistry (Formalin/PFA-fixed paraffin-embedded sections) - Anti-CD11b antibody [SP331]
- C-terminal (ab224800)



Formalin-fixed, paraffin-embedded human pancreatic adenocarcinoma tissue stained for CD11b using ab224800 at 1/100 dilution in immunohistochemical analysis.

Immunohistochemistry (Formalin/PFA-fixed paraffin-embedded sections) - Anti-CD11b antibody [SP331]
- C-terminal (ab224800)



Formalin-fixed, paraffin-embedded human skin squamous cell carcinoma tissue stained for CD11b using ab224800 at 1/100 dilution in immunohistochemical analysis.

Immunohistochemistry (Formalin/PFA-fixed paraffin-embedded sections) - Anti-CD11b antibody [SP331]
- C-terminal (ab224800)

Why choose a recombinant antibody?



Research with confidence
Consistent and reproducible results



Long-term and scalable supply
Recombinant technology



Success from the first experiment
Confirmed specificity



Ethical standards compliant
Animal-free production

Anti-CD11b antibody [SP331] - C-terminal
(ab224800)

Please note: All products are "FOR RESEARCH USE ONLY. NOT FOR USE IN DIAGNOSTIC PROCEDURES"

Our Abpromise to you: Quality guaranteed and expert technical support

- Replacement or refund for products not performing as stated on the datasheet
- Valid for 12 months from date of delivery
- Response to your inquiry within 24 hours
- We provide support in Chinese, English, French, German, Japanese and Spanish
- Extensive multi-media technical resources to help you
- We investigate all quality concerns to ensure our products perform to the highest standards

If the product does not perform as described on this datasheet, we will offer a refund or replacement. For full details of the Abpromise, please visit <https://www.abcam.co.jp/abpromise> or contact our technical team.

Terms and conditions

- Guarantee only valid for products bought direct from Abcam or one of our authorized distributors