

Anti-CD116 antibody [4H1] ab95681

1 References [画像数 1](#)

製品の概要

製品名	Anti-CD116 antibody [4H1]
製品の詳細	Mouse monoclonal [4H1] to CD116
由来種	Mouse
アプリケーション	適用あり: Flow Cyt
種交差性	交差種: Human
免疫原	Tissue, cells or virus corresponding to Human CD116. CD116-transfected COS cells.
ポジティブ・コントロール	Human peripheral blood leukocytes
特記事項	<p>The Life Science industry has been in the grips of a reproducibility crisis for a number of years. Abcam is leading the way in addressing this with our range of recombinant monoclonal antibodies and knockout edited cell lines for gold-standard validation. Please check that this product meets your needs before purchasing.</p> <p>If you have any questions, special requirements or concerns, please send us an inquiry and/or contact our Support team ahead of purchase. Recommended alternatives for this product can be found below, along with publications, customer reviews and Q&As</p>

製品の特性

製品の状態	Liquid
保存方法	Shipped at 4°C. Store at +4°C short term (1-2 weeks). Store at -20°C or -80°C. Avoid freeze / thaw cycle.
バッファー	pH: 7.20 Preservative: 0.09% Sodium azide Constituents: 0.87% Sodium chloride, PBS
精製度	Protein G purified
ポリ/モノ	モノクローナル
クローン名	4H1
アイソタイプ	IgG1
軽鎖の種類	kappa

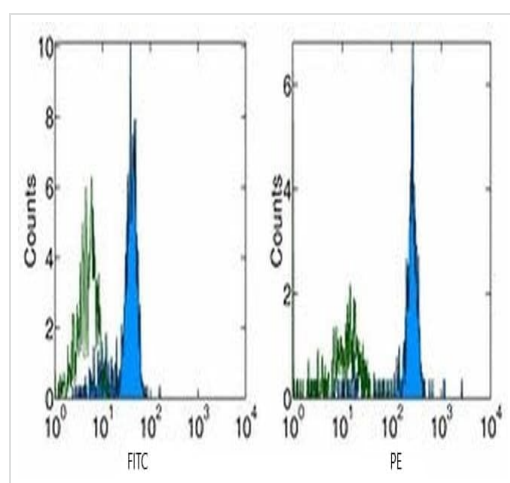
The Abpromise guarantee **Abpromise保証は、** 次のテスト済みアプリケーションにおけるab95681の使用に適用されます
 アプリケーションノートには、推奨の開始希釈率がありますが、適切な希釈率につきましてはご検討ください。

アプリケーション	Abreviews	特記事項
Flow Cyt		Use at an assay dependent concentration. Use primary antibody at 1 µg/test.

ターゲット情報

機能	Low affinity receptor for granulocyte-macrophage colony-stimulating factor. Transduces a signal that results in the proliferation, differentiation, and functional activation of hematopoietic cells.
関連疾患	Defects in CSF2RA are the cause of pulmonary surfactant metabolism dysfunction type 4 (SMDP4) [MIM:300770]. A rare lung disorder due to impaired surfactant homeostasis. It is characterized by alveolar filling with floccular material that stains positive using the periodic acid-Schiff method and is derived from surfactant phospholipids and protein components. Excessive lipoproteins accumulation in the alveoli results in severe respiratory distress.
配列類似性	Belongs to the type I cytokine receptor family. Type 5 subfamily.
ドメイン	The WSXWS motif appears to be necessary for proper protein folding and thereby efficient intracellular transport and cell-surface receptor binding. The box 1 motif is required for JAK interaction and/or activation.
細胞内局在	Secreted and Cell membrane.

画像



Flow cytometry analysis of normal human peripheral blood cells labeling CD116 with ab95681 at 1 µg/test. Anti-CD116 FITC (left) and PE (right). Appropriate isotype controls were used (open histogram). Cells in the monocyte population were used for analysis.

Flow Cytometry - Anti-CD116 antibody [4H1]
(ab95681)

Please note: All products are "FOR RESEARCH USE ONLY. NOT FOR USE IN DIAGNOSTIC PROCEDURES"

Our Abpromise to you: Quality guaranteed and expert technical support

- Replacement or refund for products not performing as stated on the datasheet
- Valid for 12 months from date of delivery
- Response to your inquiry within 24 hours

- We provide support in Chinese, English, French, German, Japanese and Spanish
- Extensive multi-media technical resources to help you
- We investigate all quality concerns to ensure our products perform to the highest standards

If the product does not perform as described on this datasheet, we will offer a refund or replacement. For full details of the Abpromise, please visit <https://www.abcam.co.jp/abpromise> or contact our technical team.

Terms and conditions

- Guarantee only valid for products bought direct from Abcam or one of our authorized distributors