

### Anti-CCR6 antibody [EPR22259] - BSA and Azide free ab243852

リコンビナント **RabMAb**

★★★★★ **1 Abreviews** **1 References** 画像数 6

#### 製品の概要

製品名	Anti-CCR6 antibody [EPR22259] - BSA and Azide free
製品の詳細	Rabbit monoclonal [EPR22259] to CCR6 - BSA and Azide free
由来種	Rabbit
アプリケーション	<b>適用あり:</b> WB, IHC-P, IP, Indirect ELISA <b>適用なし:</b> Flow Cyt or ICC/IF
種交差性	<b>交差種:</b> Human
免疫原	Synthetic peptide. This information is proprietary to Abcam and/or its suppliers.
ポジティブ・コントロール	WB: HL-60, Hut-78 and HUVEC whole cell lysates; Human tonsil and thymus tissue lysate. IHC-P: Human Hodgkin's lymphoma and tonsil tissue. IP: HL-60 whole cell lysate. Indirect ELISA: human CCR6
特記事項	ab243852 is the carrier-free version of <a href="#">ab227036</a> .

Our **carrier-free** antibodies are typically supplied in a PBS-only formulation, purified and free of BSA, sodium azide and glycerol. The carrier-free buffer and high concentration allow for increased conjugation efficiency.

This conjugation-ready format is designed for use with fluorochromes, metal isotopes, oligonucleotides, and enzymes, which makes them ideal for antibody labelling, functional and cell-based assays, flow-based assays (e.g. mass cytometry) and Multiplex Imaging applications.

Use our **conjugation kits** for antibody conjugates that are ready-to-use in as little as 20 minutes with <1 minute hands-on-time and 100% antibody recovery: available for fluorescent dyes, HRP, biotin and gold.

This product is compatible with the Maxpar<sup>®</sup> Antibody Labeling Kit from Fluidigm, without the need for antibody preparation. Maxpar<sup>®</sup> is a trademark of Fluidigm Canada Inc.

This product is a recombinant monoclonal antibody, which offers several advantages including:

- High batch-to-batch consistency and reproducibility
- Improved sensitivity and specificity
- Long-term security of supply
- Animal-free production

For more information [see here](#).

Our RabMAb<sup>®</sup> technology is a patented hybridoma-based technology for making rabbit monoclonal antibodies. For details on our patents, please refer to [RabMAb<sup>®</sup> patents](#).

## 製品の特性

製品の状態	Liquid
保存方法	Shipped at 4°C. Store at +4°C. Do Not Freeze.
バッファー	pH: 7.2 Constituent: PBS
キャリア・フリー	はい
精製度	Protein A purified
ポリ/モノ	モノクローナル
クローン名	EPR22259
アイソタイプ	IgG

## アプリケーション

**The Abpromise guarantee**      **Abpromise保証は、次のテスト済みアプリケーションにおけるab243852の使用に適用されます**  
アプリケーションノートには、推奨の開始希釈率がありますが、適切な希釈率につきましてはご確認ください。

アプリケーション	Abreviews	特記事項
WB		Use at an assay dependent concentration. Predicted molecular weight: 42 kDa.
IHC-P	★★★★★ (1)	Use at an assay dependent concentration. Perform heat mediated antigen retrieval with Tris/EDTA buffer pH 9.0 before commencing with IHC staining protocol.
IP		Use at an assay dependent concentration.
Indirect ELISA		Use at an assay dependent concentration.

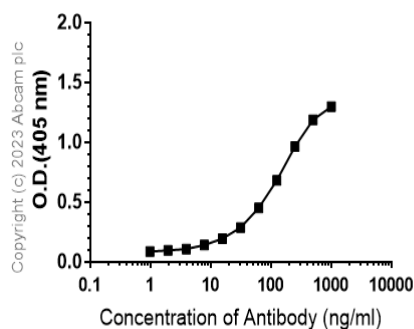
**追加情報**      Is unsuitable for Flow Cyt or ICC/IF.

## ターゲット情報

機能	Receptor for a C-C type chemokine. Binds to MIP-3-alpha/LARC and subsequently transduces a signal by increasing the intracellular calcium ions level.
組織特異性	Spleen, lymph nodes, appendix, and fetal liver. Expressed in lymphocytes, T-cells and B-cells but not in natural killer cells, monocytes or granulocytes.
配列類似性	Belongs to the G-protein coupled receptor 1 family.
細胞内局在	Cell membrane.

## 画像

### Indirect ELISA antibody dose-response curve antigen at 1000 ng/ml



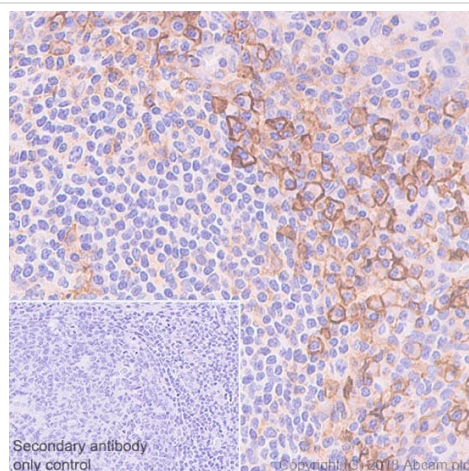
Indirect ELISA - Anti-CCR6 antibody [EPR22259] - BSA and Azide free (ab243852)

This data was developed using the same antibody clone in a different buffer formulation containing PBS, BSA, glycerol, and sodium azide ([ab227036](#)).

Indirect ELISA showing primary antibody [ab227036](#) binding to Human CCR6. Antigen concentration is 1000 ng/ml.

Binding of [ab227036](#) was assessed in a serial dilution range 1000-0 ng/ml.

Binding was detected using the secondary antibody, Alkaline Phosphatase-conjugated AffiniPure Goat Anti-Rabbit IgG(H+L) at 1/2500 dilution.



Immunohistochemistry (Formalin/PFA-fixed paraffin-embedded sections) - Anti-CCR6 antibody [EPR22259] - BSA and Azide free (ab243852)

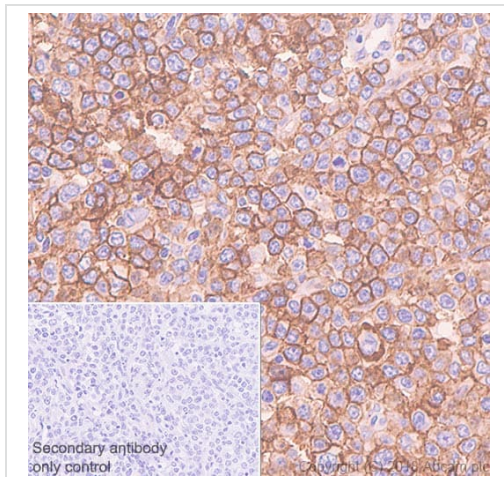
Immunohistochemical analysis of paraffin-embedded human tonsil tissue labeling CCR6 with [ab227036](#) at 1/1000 dilution, followed by the ready to use Rabbit specific IHC polymer detection kit HRP/DAB ([ab209101](#)). Membranous staining on human tonsil (PMID: 12514792) is observed. Counterstained with hematoxylin.

Secondary antibody only control: Used PBS instead of primary antibody, secondary antibody is the ready to use Rabbit specific IHC polymer detection kit HRP/DAB ([ab209101](#)).

The section was incubated with [ab227036](#) for 30 mins at 37°C. The immunostaining was performed on a Leica Biosystems BOND® RX instrument.

Heat mediated antigen retrieval with Tris-EDTA buffer (pH 9.0, epitope retrieval solution 2) for 20 mins.

This data was developed using the same antibody clone in a different buffer formulation containing PBS, BSA, glycerol, and sodium azide ([ab227036](#)).



Immunohistochemistry (Formalin/PFA-fixed paraffin-embedded sections) - Anti-CCR6 antibody [EPR22259] - BSA and Azide free (ab243852)

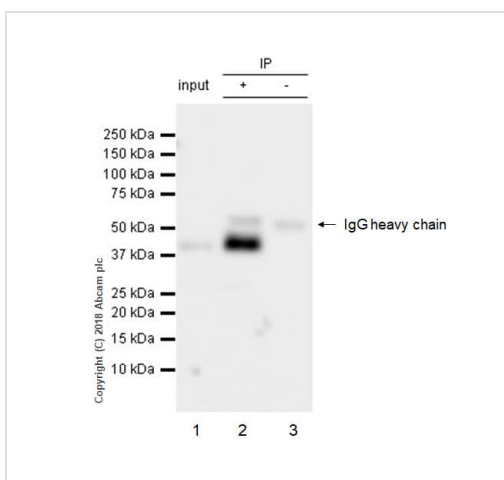
Immunohistochemical analysis of paraffin-embedded human Hodgkin's lymphoma tissue labeling CCR6 with **ab227036** at 1/1000 dilution, followed by the ready to use Rabbit specific IHC polymer detection kit HRP/DAB (**ab209101**). Membranous staining on human Hodgkin's lymphoma (PMID: 12514792) is observed. Counterstained with hematoxylin.

Secondary antibody only control: Used PBS instead of primary antibody, secondary antibody is the ready to use Rabbit specific IHC polymer detection kit HRP/DAB (**ab209101**).

Heat mediated antigen retrieval with Tris-EDTA buffer (pH 9.0, epitope retrieval solution 2) for 20 mins.

The section was incubated with **ab227036** for 30 mins at 37°C. The immunostaining was performed on a Leica Biosystems BOND® RX instrument.

This data was developed using the same antibody clone in a different buffer formulation containing PBS, BSA, glycerol, and sodium azide (**ab227036**).



Immunoprecipitation - Anti-CCR6 antibody [EPR22259] - BSA and Azide free (ab243852)

CCR6 was immunoprecipitated from 0.35 mg HL-60 (Human acute promyelocytic leukemia promyeloblast) whole cell lysate with **ab227036** at 1/30 dilution. Western blot was performed on the immunoprecipitate using **ab227036** at 1/500 dilution. VeriBlot for IP Detection Reagent (HRP) (**ab131366**) was used for detection at 1/1000 dilution.

**Lane 1:** HL-60 whole cell lysate 10 µg (input).

**Lane 2:** **ab227036** IP in HL-60 whole cell lysate.

**Lane 3:** Rabbit monoclonal IgG (**ab172730**) instead of **ab227036** in HL-60 whole cell lysate.

Blocking and dilution buffer and concentration: 5% NFDM/TBST. Exposure time: 1 second.

This data was developed using the same antibody clone in a different buffer formulation containing PBS, BSA, glycerol, and

sodium azide (**ab227036**).

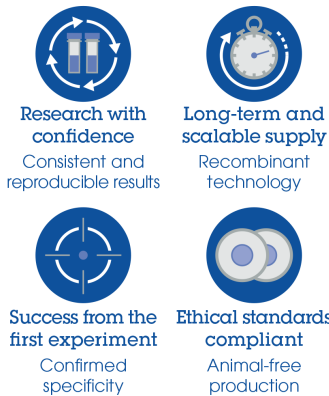
Tissue Microarray (TMA) data for ab227036

Normal tissue samples				Malignant tissue samples			
Human cardiac muscle	x (stromal cells ✓)	Human placenta	x (stromal cells ✓)	Clear cell carcinoma of human kidney	x (stromal cells ✓)	Human hepatocellular carcinoma	x (stromal cells ✓)
Human cerebrum	x (stromal cells ✓)	Human skeletal muscle	x	Human bladder cancer	x (stromal cells ✓)	Human Hodgkin's lymphoma	✓
Human colon	x (stromal cells ✓)	Human skin	x	Human breast carcinoma	x (stromal cells ✓)	Human lung carcinoma	x (stromal cells ✓)
Human endometrium	x	Human spleen	x (stromal cells ✓)	Human cervical carcinoma	✓	Human ovarian carcinoma	✓
Human kidney	x (stromal cells ✓)	Human stomach	x (stromal cells ✓)	Human colon carcinoma	✓	Human pancreatic carcinoma	x (stromal cells ✓)
Human liver	x (stromal cells ✓)	Human testis	x	Human endometrial carcinoma	x (stromal cells ✓)	Human prostatic hyperplasia	x
Human lung	x	Human thyroid	x	Human gastric adenocarcinoma	x (stromal cells ✓)	Human thyroid carcinoma	x (stromal cells ✓)
Human mammary gland	x	Human tonsil	✓	Human glioma	x (stromal cells ✓)		
Human pancreas	x (stromal cells ✓)						

Tissue Microarrays stained for " Anti-CCR6 antibody [EPR22259]" using " **ab227036**" in immunohistochemical analysis. This table provides a detailed overview of positive (tick mark) and negative (cross mark) staining per sample type tested. The sections were pre-treated using Heat mediated antigen retrieval using Bond™ Epitope Retrieval Solution 2 (pH 9.0) for 20 minutes. The sections were incubated with **ab227036** for 30 mins at 37°C followed by a ready to use Rabbit specific IHC polymer detection kit HRP/DAB (**ab209101**). The immunostaining was performed on a Leica Biosystems BOND® RX instrument.

Immunohistochemistry (Formalin/PFA-fixed paraffin-embedded sections) - Anti-CCR6 antibody [EPR22259] - BSA and Azide free (ab243852)

### Why choose a recombinant antibody?



Anti-CCR6 antibody [EPR22259] - BSA and Azide free (ab243852)

**Please note:** All products are "FOR RESEARCH USE ONLY. NOT FOR USE IN DIAGNOSTIC PROCEDURES"

### Our Abpromise to you: Quality guaranteed and expert technical support

- Replacement or refund for products not performing as stated on the datasheet
- Valid for 12 months from date of delivery
- Response to your inquiry within 24 hours
- We provide support in Chinese, English, French, German, Japanese and Spanish
- Extensive multi-media technical resources to help you
- We investigate all quality concerns to ensure our products perform to the highest standards

If the product does not perform as described on this datasheet, we will offer a refund or replacement. For full details of the Abpromise, please visit <https://www.abcam.co.jp/abpromise> or contact our technical team.

## Terms and conditions

---

- Guarantee only valid for products bought direct from Abcam or one of our authorized distributors