




Anti-CCR6 antibody ab78429

★★★★★ [2 Abreviews](#) [15 References](#) [画像数 1](#)

製品の概要

製品名	Anti-CCR6 antibody
製品の詳細	Rabbit polyclonal to CCR6
由来種	Rabbit
特異性	No cross reactivity with other proteins.
アプリケーション	適用あり: WB
種交差性	交差種: Rat, Human 交差が予測される動物種: Mouse, Dog 
免疫原	Synthetic peptide corresponding to Human CCR6 aa 358-374 (C terminal). Different from the related rat and mouse sequences by two amino acids. Sequence: RQTSETADNDNASSFTM <div>  Run BLAST with  Run BLAST with </div>
ポジティブ・コントロール	WB: Rat liver tissue lysate and SW620 and CEM cell lysates.
特記事項	<p>The Life Science industry has been in the grips of a reproducibility crisis for a number of years. Abcam is leading the way in addressing this with our range of recombinant monoclonal antibodies and knockout edited cell lines for gold-standard validation. Please check that this product meets your needs before purchasing.</p> <p>If you have any questions, special requirements or concerns, please send us an inquiry and/or contact our Support team ahead of purchase. Recommended alternatives for this product can be found below, along with publications, customer reviews and Q&As</p>

製品の特性

製品の状態	Liquid
保存方法	Shipped at 4°C. Upon delivery aliquot and store at -20°C. Avoid repeated freeze / thaw cycles.
バッファー	Preservative: 0.025% Sodium azide Constituents: 0.45% Sodium chloride, 0.1% Dibasic monohydrogen sodium phosphate, 2% Trehalose
精製度	Immunogen affinity purified
ポリ/モノ	ポリクローナル

アイソタイプ

IgG

アプリケーション

The Abpromise guarantee

Abpromise保証は、次のテスト済みアプリケーションにおけるab78429の使用に適用されます

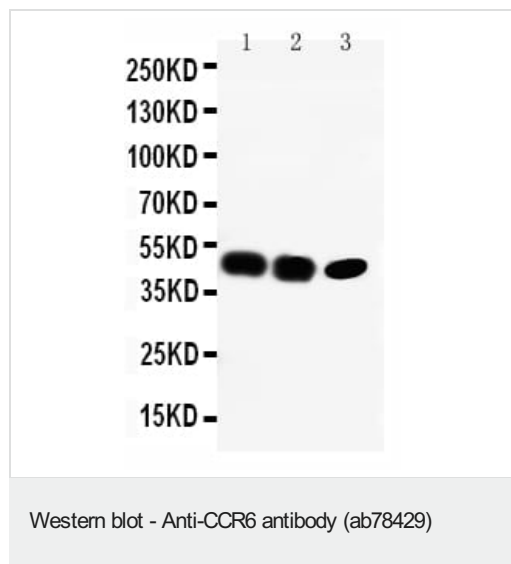
アプリケーションノートには、推奨の開始希釈率がありますが、適切な希釈率につきましてはご検討ください。

アプリケーション	Abreviews	特記事項
WB		Use a concentration of 0.1 - 0.5 µg/ml. Predicted molecular weight: 42 kDa.

ターゲット情報

機能	Receptor for a C-C type chemokine. Binds to MIP-3-alpha/LARC and subsequently transduces a signal by increasing the intracellular calcium ions level.
組織特異性	Spleen, lymph nodes, appendix, and fetal liver. Expressed in lymphocytes, T-cells and B-cells but not in natural killer cells, monocytes or granulocytes.
配列類似性	Belongs to the G-protein coupled receptor 1 family.
細胞内局在	Cell membrane.

画像



All lanes : Anti-CCR6 antibody (ab78429) at 0.5 µg/ml

Lane 1 : Rat Liver Tissue Lysate

Lane 2 : SW620 Cell Lysate

Lane 3 : CEM Cell Lysate

Predicted band size: 42 kDa

Please note: All products are "FOR RESEARCH USE ONLY. NOT FOR USE IN DIAGNOSTIC PROCEDURES"

Our Abpromise to you: Quality guaranteed and expert technical support

- Replacement or refund for products not performing as stated on the datasheet
- Valid for 12 months from date of delivery

- Response to your inquiry within 24 hours
- We provide support in Chinese, English, French, German, Japanese and Spanish
- Extensive multi-media technical resources to help you
- We investigate all quality concerns to ensure our products perform to the highest standards

If the product does not perform as described on this datasheet, we will offer a refund or replacement. For full details of the Abpromise, please visit <https://www.abcam.co.jp/abpromise> or contact our technical team.

Terms and conditions

- Guarantee only valid for products bought direct from Abcam or one of our authorized distributors