

Anti-CCR4 antibody [KW-0761 (Mogamulizumab)] - Rabbit IgG (Chimeric) ab275980

リコンビナント

画像数 3

製品の概要

製品名	Anti-CCR4 antibody [KW-0761 (Mogamulizumab)] - Rabbit IgG (Chimeric)
製品の詳細	Rabbit monoclonal [KW-0761 (Mogamulizumab)] to CCR4 - Chimeric
由来種	Rabbit
アプリケーション	適用あり: WB
種交差性	交差種: Human
免疫原	Other Immunogen Type corresponding to Human CCR4. Database link: P51679
ポジティブ・コントロール	WB: Human erebellum and heart tissue lysates.
特記事項	This rabbit monoclonal chimeric antibody was made using the variable domain sequences of the original Human IgG1 format, for improved compatibility with existing reagents, assays and techniques.

製品の特性

製品の状態	Liquid
保存方法	Shipped at 4°C. Store at +4°C short term (1-2 weeks). Upon delivery aliquot. Store at -20°C. Avoid freeze / thaw cycle.
バッファー	Preservative: 0.02% Proclin 300 Constituent: 99.98% PBS
精製度	Protein A purified
ポリ/モノ	モノクローナル
クローン名	KW-0761 (Mogamulizumab)
アイソタイプ	IgG
軽鎖の種類	kappa

アプリケーション

The Abpromise guarantee

Abpromise保証は、次のテスト済みアプリケーションにおけるab275980の使用に適用されます

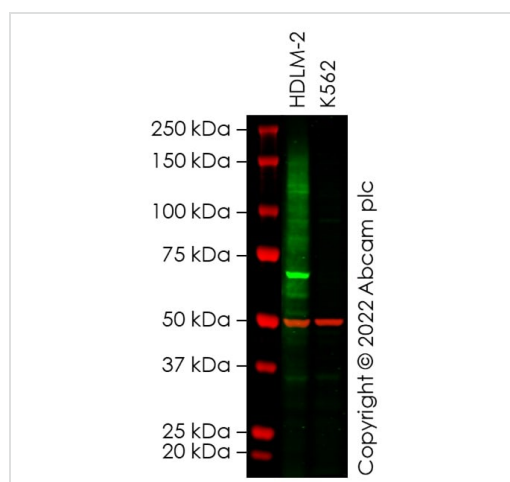
アプリケーションノートには、推奨の開始希釈率がありますが、適切な希釈率につきましてはご検討ください。

アプリケーション	Abreviews	特記事項
WB		Use a concentration of 2 µg/ml.

ターゲット情報

機能	High affinity receptor for the C-C type chemokines CCL17/TARC and CCL22/MDC. The activity of this receptor is mediated by G(i) proteins which activate a phosphatidylinositol-calcium second messenger system. Can function as a chemoattractant homing receptor on circulating memory lymphocytes and as a coreceptor for some primary HIV-2 isolates. In the CNS, could mediate hippocampal-neuron survival.
組織特異性	Predominantly expressed in the thymus, in peripheral blood leukocytes, including T-cells, mostly CD4+ cells, and basophils, and in platelets; at lower levels, in the spleen and in monocytes. Detected also in macrophages, IL-2-activated natural killer cells and skin-homing memory T-cells, mostly the ones expressing the cutaneous lymphocyte antigen (CLA). Expressed in brain microvascular and coronary artery endothelial cells.
配列類似性	Belongs to the G-protein coupled receptor 1 family.
翻訳後修飾	In natural killer cells, CCL22 binding induces phosphorylation on yet undefined Ser/Thr residues, most probably by beta-adrenergic receptor kinases 1 and 2.
細胞内局在	Cell membrane.

画像



Western blot - Anti-CCR4 antibody [KW-0761 (Mogamulizumab)] - Rabbit IgG (Chimeric) (ab275980)

All lanes : Anti-CCR4 antibody [KW-0761 (Mogamulizumab)] - Rabbit IgG (Chimeric) (ab275980) at 2 µg/ml

Lane 1 : HDLM-2 cell lysate

Lane 2 : K562 cell lysate

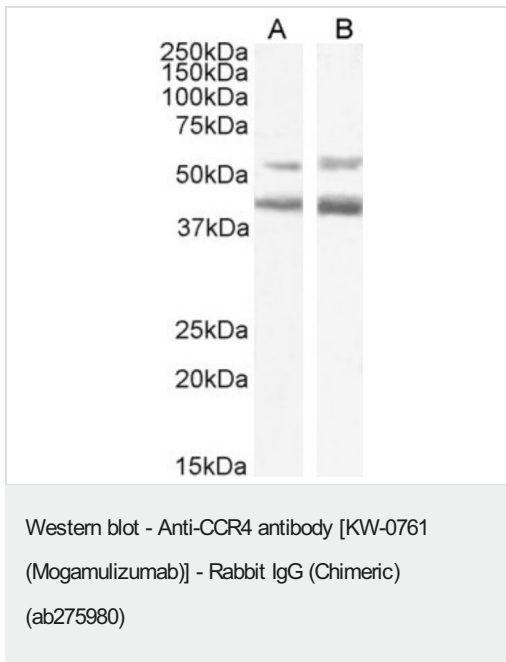
Lysates/proteins at 20 µg per lane.

Performed under reducing conditions.

Observed band size: 67 kDa

False colour image of Western blot: Anti-CCR4 antibody [KW-0761 (Mogamulizumab)] - Chimeric staining at 2 µg/ml, shown in green; Mouse anti-Alpha Tubulin [DM1A] (**ab7291**) loading control staining at 1/20000 dilution, shown in red. In Western blot, ab275980 was

shown to bind specifically to CCR4. First, samples were run on an SDS-PAGE gel then transferred onto a nitrocellulose membrane. Membranes were blocked in 3 % milk in TBS-0.1 % Tween[®] 20 (TBS-T) before incubation with primary antibodies overnight at 4 °C. Blots were washed four times in TBS-T, incubated with secondary antibodies for 1 h at room temperature, washed again four times then imaged. Secondary antibodies used were Goat anti-Rabbit IgG H&L 800CW and Goat anti-Mouse IgG H&L 680RD at 1/20000 dilution.



All lanes : Anti-CCR4 antibody [KW-0761 (Mogamulizumab)] - Rabbit IgG (Chimeric) (ab275980) at 2 µg/ml

Lane 1 : Human cerebellum tissue lysate





Lane 2 : Human heart tissue lysate

Lysates/proteins at 35 µg per lane.

10% SDS PAGE gel

A primary incubation of 1h was used and protein was detected by chemiluminescence. The expected running size for CCR4 is 37.7kDa.

Why choose a recombinant antibody?

 <p>Research with confidence Consistent and reproducible results</p>	 <p>Long-term and scalable supply Recombinant technology</p>
 <p>Success from the first experiment Confirmed specificity</p>	 <p>Ethical standards compliant Animal-free production</p>

Anti-CCR4 antibody [KW-0761 (Mogamulizumab)] - Rabbit IgG (Chimeric) (ab275980)

Please note: All products are "FOR RESEARCH USE ONLY. NOT FOR USE IN DIAGNOSTIC PROCEDURES"

Our Abpromise to you: Quality guaranteed and expert technical support

- Replacement or refund for products not performing as stated on the datasheet
- Valid for 12 months from date of delivery
- Response to your inquiry within 24 hours

- We provide support in Chinese, English, French, German, Japanese and Spanish
- Extensive multi-media technical resources to help you
- We investigate all quality concerns to ensure our products perform to the highest standards

If the product does not perform as described on this datasheet, we will offer a refund or replacement. For full details of the Abpromise, please visit <https://www.abcam.co.jp/abpromise> or contact our technical team.

Terms and conditions

- Guarantee only valid for products bought direct from Abcam or one of our authorized distributors