

Anti-CCR2 antibody [EPR22191] ab227236

KO 評価済 リコンビナント RabMAb

画像数 4

製品の概要

製品名	Anti-CCR2 antibody [EPR22191]
製品の詳細	Rabbit monoclonal [EPR22191] to CCR2
由来種	Rabbit
アプリケーション	適用あり: Indirect ELISA, Flow Cyt 適用なし: ICC/IF, IHC-P or WB
種交差性	交差種: Human
免疫原	Synthetic peptide. This information is proprietary to Abcam and/or its suppliers.
ポジティブ・コントロール	Flow Cyt: Human peripheral blood mononuclear cell (PBMC).
特記事項	This product is a recombinant monoclonal antibody, which offers several advantages including: <ul style="list-style-type: none"> - High batch-to-batch consistency and reproducibility - Improved sensitivity and specificity - Long-term security of supply - Animal-free production For more information see here . Our RabMAb [®] technology is a patented hybridoma-based technology for making rabbit monoclonal antibodies. For details on our patents, please refer to RabMAb[®] patents .

製品の特性

製品の状態	Liquid
保存方法	Shipped at 4°C. Store at +4°C short term (1-2 weeks). Upon delivery aliquot. Store at -20°C long term. Avoid freeze / thaw cycle.
バッファー	pH: 7.2 Preservative: 0.01% Sodium azide Constituents: PBS, 40% Glycerol (glycerin, glycerine), 0.05% BSA
精製度	Protein A purified
ポリ/モノ	モノクローナル
クローン名	EPR22191
アイソタイプ	IgG

アプリケーション

The Abpromise guarantee Abpromise保証は、 次のテスト済みアプリケーションにおけるab227236の使用に適用されます
アプリケーションノートには、推奨の開始希釈率がありますが、適切な希釈率につきましてはご検討ください。

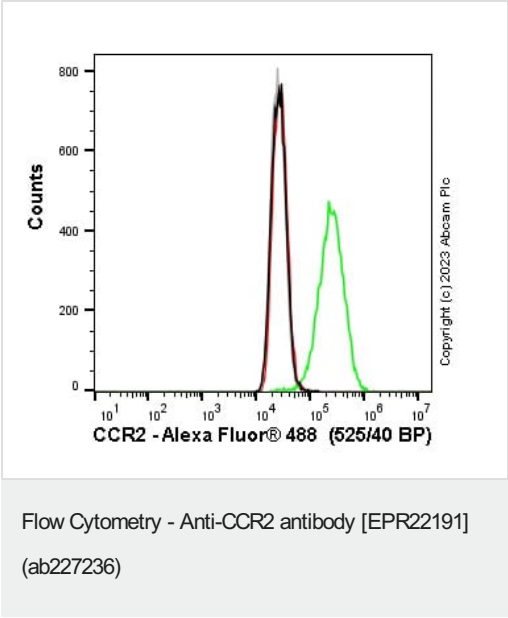
アプリケーション	Abreviews	特記事項
Indirect ELISA		Use at an assay dependent concentration.
Flow Cyt		1/500.

追加情報 Is unsuitable for ICC/IF,IHC-P or WB.

ターゲット情報

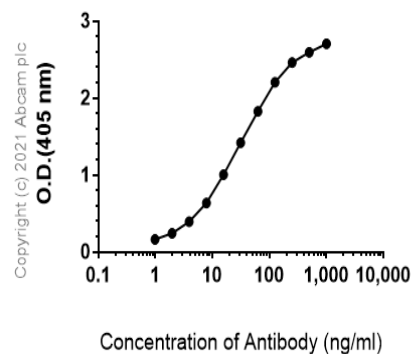
機能	Receptor for the MCP-1, MCP-3 and MCP-4 chemokines. Transduces a signal by increasing the intracellular calcium ions level. Alternative coreceptor with CD4 for HIV-1 infection.
配列類似性	Belongs to the G-protein coupled receptor 1 family.
翻訳後修飾	N-glycosylated.
細胞内局在	Cell membrane.

画像



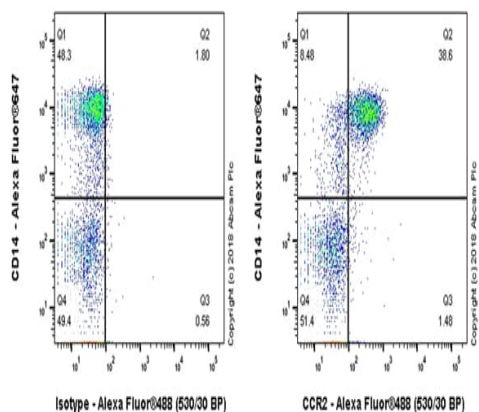
Flow cytometry overlay histogram showing wild-type THP-1 (green line) and CCR2 knockout THP-1 cells ([ab273716](#), red line) stained with ab227236. The cells were incubated in 1x PBS containing 10µg/ml human IgG and 10% normal goat serum to block non-specific protein-protein interaction followed by the antibody (ab227236) (1x10⁶ in 100µl at 1 µg/ml) for 30 min at 4°C. The secondary antibody Goat anti-rabbit IgG H&L (Alexa Fluor® 488, pre-adsorbed) ([ab150081](#)) was used at 1/2000 for 30 min at 4°C. Isotype control antibody was Rabbit IgG (monoclonal) ([ab172730](#)) used at the same concentration and conditions as the primary antibody (wild-type THP-1 - black line; CCR2 THP-1 knockout - grey line). Unlabelled sample was also used as a control (this line is not shown for the purpose of simplicity). Acquisition of >5000 events were collected using a 50 mW Blue laser (488nm) and 525/40 bandpass filter.

Indirect ELISA antibody dose-response curve antigen at 1000 ng/ml



Indirect ELISA - Anti-CCR2 antibody [EPR22191]
(ab227236)

ELISA analysis of Human CCR2 Protein recombinant protein at 1000 ng/ml with ab227236. An Alkaline Phosphatase-conjugated AffiniPure Goat Anti-Rabbit IgG (H+L) at 1/2500 dilution was used as the secondary antibody.



Flow Cytometry - Anti-CCR2 antibody [EPR22191]
(ab227236)

Flow cytometric analysis of human peripheral blood mononuclear cell (PBMC) labeling CCR2 with ab227236 at 1/500 dilution (right panel) compared with a Rabbit IgG, monoclonal [EPR25A] - Isotype Control (**ab172730**) (left panel). Goat Anti-Rabbit IgG H&L (Dylight® 488) (**ab98462**) at 1/2000 dilution was used as the secondary antibody.

Cells were stained with Alexa Fluor® 647-conjugated CD14 and rabbit IgG (Left) or CCR2 (Right). Data shown were gated on viable cells (PMID:10811011; PMID:22403612).

Why choose a recombinant antibody?



Research with confidence
Consistent and reproducible results



Long-term and scalable supply
Recombinant technology



Success from the first experiment
Confirmed specificity



Ethical standards compliant
Animal-free production

Anti-CCR2 antibody [EPR22191] (ab227236)

Please note: All products are "FOR RESEARCH USE ONLY. NOT FOR USE IN DIAGNOSTIC PROCEDURES"

Our Abpromise to you: Quality guaranteed and expert technical support

- Replacement or refund for products not performing as stated on the datasheet
- Valid for 12 months from date of delivery
- Response to your inquiry within 24 hours
- We provide support in Chinese, English, French, German, Japanese and Spanish
- Extensive multi-media technical resources to help you
- We investigate all quality concerns to ensure our products perform to the highest standards

If the product does not perform as described on this datasheet, we will offer a refund or replacement. For full details of the Abpromise, please visit <https://www.abcam.co.jp/abpromise> or contact our technical team.

Terms and conditions

- Guarantee only valid for products bought direct from Abcam or one of our authorized distributors