

Anti-CBX2 antibody ab80044

★★★★☆ [2 Abreviews](#) [12 References](#) [画像数 3](#)

製品の概要

製品名	Anti-CBX2 antibody
製品の詳細	Rabbit polyclonal to CBX2
由来種	Rabbit
特異性	From Jan 2024, QC testing of replenishment batches of this polyclonal changed. All tested and expected application and reactive species combinations are still covered by our Abcam product promise. However, we no longer test all applications. For more information on a specific batch, please contact our Scientific Support who will be happy to help.
アプリケーション	適用あり: IP, WB
種交差性	交差種: Mouse, Human
免疫原	Synthetic peptide corresponding to Human CBX2 aa 500 to the C-terminus (C terminal) conjugated to keyhole limpet haemocyanin. (Peptide available as ab91615)
ポジティブ・コントロール	This antibody gave a positive signal in the following lysates: JEG3 whole cell; HUVEC whole cell; HEK293 whole cell; MEL-1 whole cell; MEL-2 whole cell; HeLa nuclear; NIH3T3 whole cell; human testis tissue.
特記事項	<p>The Life Science industry has been in the grips of a reproducibility crisis for a number of years. Abcam is leading the way in addressing this with our range of recombinant monoclonal antibodies and knockout edited cell lines for gold-standard validation. Please check that this product meets your needs before purchasing.</p> <p>If you have any questions, special requirements or concerns, please send us an inquiry and/or contact our Support team ahead of purchase. Recommended alternatives for this product can be found below, along with publications, customer reviews and Q&As</p>

製品の特性

製品の状態	Liquid
保存方法	Shipped at 4°C. Store at +4°C short term (1-2 weeks). Upon delivery aliquot. Store at -20°C or -80°C. Avoid freeze / thaw cycle.
バッファー	pH: 7.40 Preservative: 0.02% Sodium azide Constituent: PBS

Batches of this product that have a concentration < 1mg/ml may have BSA added as a stabilising agent. If you would like information about the formulation of a specific lot, please contact our scientific support team who will be happy to help.

精製度	Immunogen affinity purified
ポリ/モノ	ポリクローナル
アイソタイプ	IgG

アプリケーション

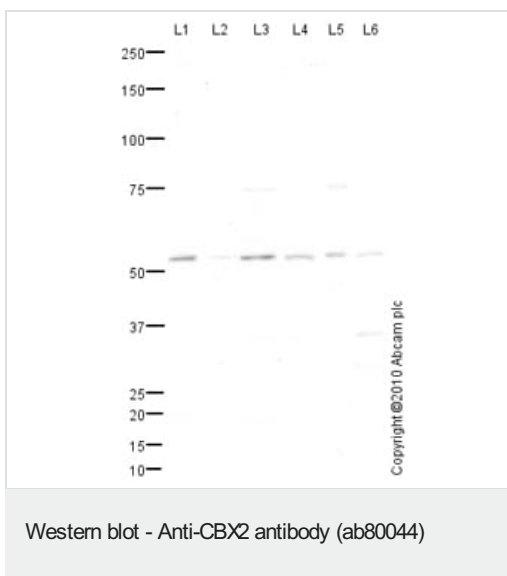
The Abpromise guarantee **Abpromise保証は、次のテスト済みアプリケーションにおけるab80044の使用に適用されます**
アプリケーションノートには、推奨の開始希釈率がありますが、適切な希釈率につきましてはご検討ください。

アプリケーション	Abreviews	特記事項
IP		Use at an assay dependent concentration.
WB		Use a concentration of 1 µg/ml. Detects a band of approximately 52 kDa (predicted molecular weight: 56 kDa).

ターゲット情報

機能	Component of the Polycomb group (PcG) multiprotein PRC1 complex, a complex required to maintain the transcriptionally repressive state of many genes, including Hox genes, throughout development. PcG PRC1 complex acts via chromatin remodeling and modification of histones; it mediates monoubiquitination of histone H2A 'Lys-119', rendering chromatin heritably changed in its expressibility. Involved in sexual development, acting as activator of NR5A1 expression.
関連疾患	Defects in CBX2 are the cause of 46,XY sex reversal type 5 (SRXY5) [MIM:613080]. It is a disorder of sex development. Affected individuals have a 46,XY karyotype but present as phenotypically normal females.
配列類似性	Contains 1 A.T hook DNA-binding domain. Contains 1 chromo domain.
細胞内局在	Nucleus.

画像



All lanes : Anti-CBX2 antibody (ab80044) at 1 µg/ml

Lane 1 : JEG-3 (Human placental choriocarcinoma cell line) Whole Cell Lysate

Lane 2 : HUVEC (Human Umbilical Vein Endothelial Cell) Whole Cell Lysate

Lane 3 : HEK293 (Human embryonic kidney cell line) Whole Cell Lysate

Lane 4 : MEL-1 (Human embryonic stem cell, male cell line) Whole Cell Lysate ([ab27198](#))

Lane 5 : MEL-2 (Human embryonic stem cell, female cell line) Whole Cell Lysate ([ab27196](#))

Lane 6 : Human testis tissue lysate - total protein ([ab30257](#))

Lysates/proteins at 10 µg per lane.

Secondary

All lanes : Goat polyclonal to Rabbit IgG - H&L - Pre-Adsorbed (HRP) at 1/3000 dilution

Developed using the ECL technique.

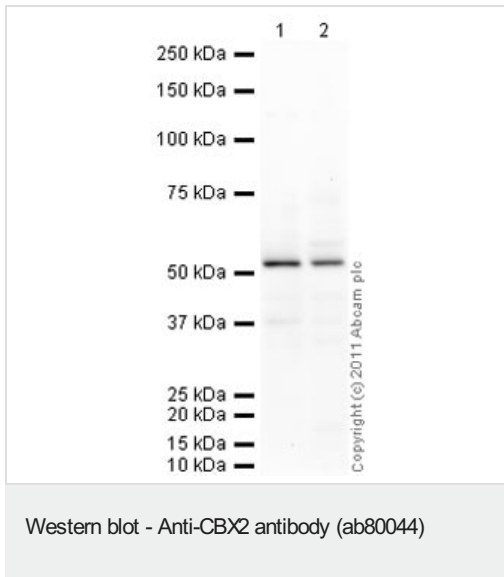
Performed under reducing conditions.

Predicted band size: 56 kDa

Observed band size: 52 kDa

Additional bands at: 36 kDa, 75 kDa. We are unsure as to the identity of these extra bands.

Exposure time: 20 minutes



All lanes : Anti-CBX2 antibody (ab80044) at 1 µg/ml

Lane 1 : HeLa (Human epithelial carcinoma cell line) Nuclear Lysate

Lane 2 : NIH 3T3 (Mouse embryonic fibroblast cell line) Whole Cell Lysate

Lysates/proteins at 10 µg per lane.

Secondary

All lanes : Goat polyclonal Secondary Antibody to Rabbit IgG - H&L (HRP), pre-adsorbed at 1/5000 dilution

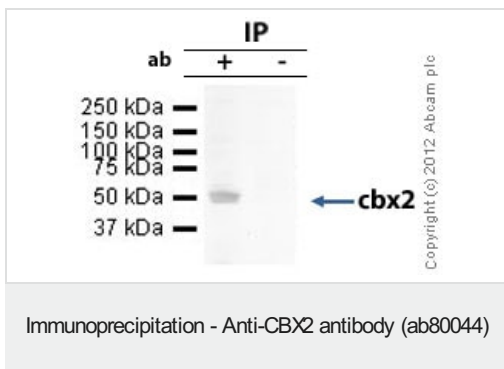
Developed using the ECL technique.

Performed under reducing conditions.

Predicted band size: 56 kDa

Observed band size: 56 kDa

Exposure time: 8 minutes



cbx2 was immunoprecipitated using 0.5mg HeLa whole cell extract, 5µg of Rabbit polyclonal to cbx2 and 50µl of protein G magnetic beads (+). No antibody was added to the control (-).

The antibody was incubated under agitation with Protein G beads for 10min, HeLa whole cell extract lysate diluted in RIPA buffer was added to each sample and incubated for a further 10min under agitation.

Proteins were eluted by addition of 40µl SDS loading buffer and incubated for 10min at 70°C; 10µl of each sample was separated on a SDS PAGE gel, transferred to a nitrocellulose membrane, blocked with 5% BSA and probed with ab80044.

Secondary: Mouse monoclonal [SB62a] Secondary Antibody to Rabbit IgG light chain (HRP) ([ab99697](#)).

Band: 52kDa: cbx2.

Please note: All products are "FOR RESEARCH USE ONLY. NOT FOR USE IN DIAGNOSTIC PROCEDURES"

Our Abpromise to you: Quality guaranteed and expert technical support

- Replacement or refund for products not performing as stated on the datasheet
- Valid for 12 months from date of delivery
- Response to your inquiry within 24 hours

- We provide support in Chinese, English, French, German, Japanese and Spanish
- Extensive multi-media technical resources to help you
- We investigate all quality concerns to ensure our products perform to the highest standards

If the product does not perform as described on this datasheet, we will offer a refund or replacement. For full details of the Abpromise, please visit <https://www.abcam.co.jp/abpromise> or contact our technical team.

Terms and conditions

- Guarantee only valid for products bought direct from Abcam or one of our authorized distributors