

Anti-CBS antibody [EPR8578] ab131155

KO 評価済 リコンビナント RabMAb

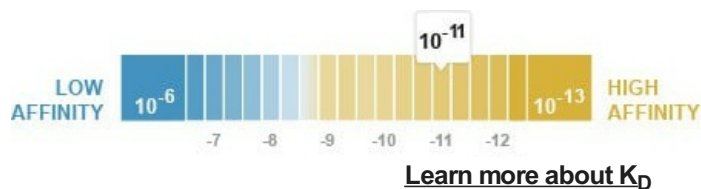
3 References 画像数 4

製品の概要

製品名	Anti-CBS antibody [EPR8578]
製品の詳細	Rabbit monoclonal [EPR8578] to CBS
由来種	Rabbit
アプリケーション	適用あり: WB 適用なし: Flow Cyt, ICC/IF, IHC-P or IP
種交差性	交差種: Human
免疫原	Synthetic peptide. This information is proprietary to Abcam and/or its suppliers.
ポジティブ・コントロール	WB: Human fetal liver tissue lysate; HeLa and Raji cell lysates.
特記事項	This product is a recombinant monoclonal antibody, which offers several advantages including: <ul style="list-style-type: none"> - High batch-to-batch consistency and reproducibility - Improved sensitivity and specificity - Long-term security of supply - Animal-free production For more information see here . Our RabMAb [®] technology is a patented hybridoma-based technology for making rabbit monoclonal antibodies. For details on our patents, please refer to RabMAb[®] patents . Mouse, Rat: We have preliminary internal testing data to indicate this antibody may not react with these species. Please contact us for more information.

製品の特性

製品の状態	Liquid
保存方法	Shipped at 4°C. Store at -20°C. Stable for 12 months at -20°C.
解離定数 (K _D 値)	K _D = 6.78 x 10 ⁻¹¹ M



バッファー	pH: 7.20 Preservative: 0.01% Sodium azide Constituents: 9% PBS, 40% Glycerol (glycerin, glycerine), 0.05% BSA, 50% Tissue culture supernatant
精製度	Protein A purified
ポリ/モノ	モノクローナル
クローン名	EPR8578
アイソタイプ	IgG

アプリケーション

The Abpromise guarantee **Abpromise保証は、次のテスト済みアプリケーションにおけるab131155の使用に適用されず**
アプリケーションノートには、推奨の開始希釈率がありますが、適切な希釈率につきましてはご検討ください。

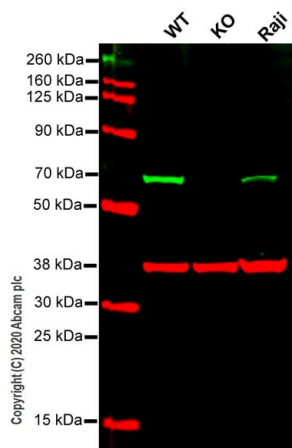
アプリケーション	Abreviews	特記事項
WB		1/1000 - 1/10000. Predicted molecular weight: 61 kDa.

追加情報 Is unsuitable for Flow Cyt, ICC/IF, IHC-P or IP.

ターゲット情報

機能	Only known pyridoxal phosphate-dependent enzyme that contains heme. Important regulator of hydrogen sulfide, especially in the brain, utilizing cysteine instead of serine to catalyze the formation of hydrogen sulfide. Hydrogen sulfide is a gastratransmitter with signaling and cytoprotective effects such as acting as a neuromodulator in the brain to protect neurons against hypoxic injury.
組織特異性	In the adult strongly expressed in liver and pancreas, some expression in heart and brain, weak expression in lung and kidney. In the fetus, expressed in brain, liver and kidney.
パスウェイ	Amino-acid biosynthesis; L-cysteine biosynthesis; L-cysteine from L-homocysteine and L-serine: step 1/2.
関連疾患	Defects in CBS are the cause of cystathionine beta-synthase deficiency (CBSD) [MIM:236200]. CBSD is an enzymatic deficiency resulting in altered sulfur metabolism and homocystinuria. The clinical features of untreated homocystinuria due to CBS deficiency include myopia, ectopia lentis, mental retardation, skeletal anomalies resembling Marfan syndrome, and thromboembolic events. Light skin and hair can also be present. Biochemical features include increased urinary homocystine and methionine.
配列類似性	Belongs to the cysteine synthase/cystathionine beta-synthase family. Contains 1 CBS domain.
細胞内局在	Cytoplasm. Nucleus.

画像



Western blot - Anti-CBS antibody [EPR8578] (ab131155)

All lanes : Anti-CBS antibody [EPR8578] (ab131155) at 1/1000 dilution

Lane 1 : Wild-type HeLa cell lysate

Lane 2 : CBS knockout HeLa cell lysate

Lane 3 : Raji cell lysate

Lysates/proteins at 20 µg per lane.

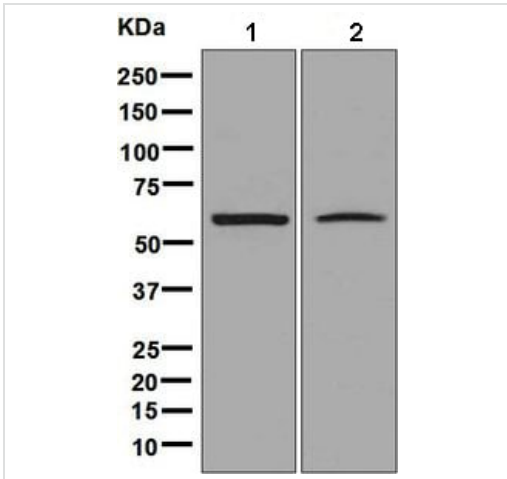
Performed under reducing conditions.

Predicted band size: 61 kDa

Observed band size: 70 kDa

Lanes 1-3: Merged signal (red and green). Green - ab131155 observed at 70 kDa. Red - loading control, **ab8245** observed at 37 kDa.

ab131155 Anti-CBS antibody [EPR8578] was shown to specifically react with CBS in wild-type HeLa cells. Loss of signal was observed when knockout cell line **ab264950** (knockout cell lysate **ab257203**) was used. Wild-type and CBS knockout samples were subjected to SDS-PAGE. ab131155 and Anti-GAPDH antibody [6C5] - Loading Control (**ab8245**) were incubated overnight at 4°C at 1 in 1000 dilution and 1 in 20000 dilution respectively. Blots were developed with Goat anti-Rabbit IgG H&L (IRDye® 800CW) preadsorbed (**ab216773**) and Goat anti-Mouse IgG H&L (IRDye® 680RD) preadsorbed (**ab216776**) secondary antibodies at 1 in 10000 dilution for 1 hour at room temperature before imaging.



Western blot - Anti-CBS antibody [EPR8578]
(ab131155)

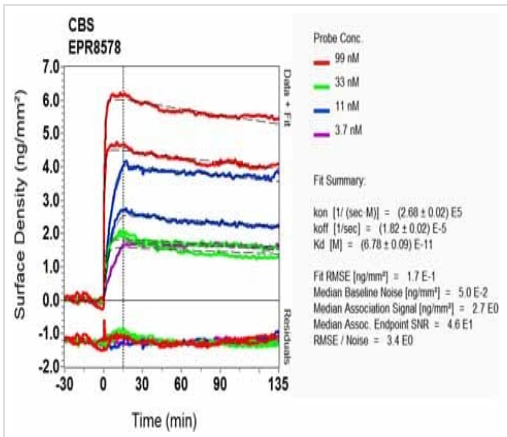
All lanes : Anti-CBS antibody [EPR8578] (ab131155) at 1/1000 dilution

Lane 1 : Fetal liver lysate

Lane 2 : Raji cell lysate

Lysates/proteins at 10 µg per lane.

Predicted band size: 61 kDa



OIR-D Scanning - Anti-CBS antibody [EPR8578]
(ab131155)

Equilibrium disassociation constant (K_D)

Learn more about K_D

[Click here to learn more about \$K_D\$](#)

Why choose a recombinant antibody?

Research with confidence
Consistent and reproducible results

Long-term and scalable supply
Recombinant technology

Success from the first experiment
Confirmed specificity

Ethical standards compliant
Animal-free production

Anti-CBS antibody [EPR8578] (ab131155)

Please note: All products are "FOR RESEARCH USE ONLY. NOT FOR USE IN DIAGNOSTIC PROCEDURES"

Our Abpromise to you: Quality guaranteed and expert technical support

- Replacement or refund for products not performing as stated on the datasheet
- Valid for 12 months from date of delivery
- Response to your inquiry within 24 hours
- We provide support in Chinese, English, French, German, Japanese and Spanish
- Extensive multi-media technical resources to help you
- We investigate all quality concerns to ensure our products perform to the highest standards

If the product does not perform as described on this datasheet, we will offer a refund or replacement. For full details of the Abpromise, please visit <https://www.abcam.co.jp/abpromise> or contact our technical team.

Terms and conditions

- Guarantee only valid for products bought direct from Abcam or one of our authorized distributors