

### Anti-CBFb antibody [EPR6321] - BSA and Azide free ab247963

KO 評価済 リコンビナント RabMAb

画像数 2

#### 製品の概要

製品名	Anti-CBFb antibody [EPR6321] - BSA and Azide free
製品の詳細	Rabbit monoclonal [EPR6321] to CBFb - BSA and Azide free
由来種	Rabbit
アプリケーション	適用あり: WB 適用なし: Flow Cyt, IHC-P or IP
種交差性	交差種: Human
免疫原	Synthetic peptide. This information is proprietary to Abcam and/or its suppliers.
ポジティブ・コントロール	WB: A431, K562 and HeLa cell lysates.
特記事項	<p>ab247963 is the carrier-free version of <a href="#">ab124693</a>.</p> <p>Our <b>carrier-free</b> antibodies are typically supplied in a PBS-only formulation, purified and free of BSA, sodium azide and glycerol. The carrier-free buffer and high concentration allow for increased conjugation efficiency.</p> <p>This conjugation-ready format is designed for use with fluorochromes, metal isotopes, oligonucleotides, and enzymes, which makes them ideal for antibody labelling, functional and cell-based assays, flow-based assays (e.g. mass cytometry) and Multiplex Imaging applications.</p> <p>Use our <b>conjugation kits</b> for antibody conjugates that are ready-to-use in as little as 20 minutes with &lt;1 minute hands-on-time and 100% antibody recovery: available for fluorescent dyes, HRP, biotin and gold.</p> <p>This product is compatible with the Maxpar<sup>®</sup> Antibody Labeling Kit from Fluidigm, without the need for antibody preparation. Maxpar<sup>®</sup> is a trademark of Fluidigm Canada Inc.</p> <p>This product is a recombinant monoclonal antibody, which offers several advantages including:</p> <ul style="list-style-type: none"> <li>- High batch-to-batch consistency and reproducibility</li> <li>- Improved sensitivity and specificity</li> <li>- Long-term security of supply</li> <li>- Animal-free production</li> </ul> <p>For more information <a href="#">see here</a>.</p> <p>Our RabMAb<sup>®</sup> technology is a patented hybridoma-based technology for making rabbit monoclonal antibodies. For details on our patents, please refer to <a href="#">RabMAb<sup>®</sup> patents</a>.</p> <p>Mouse, Rat: We have preliminary internal testing data to indicate this antibody may not react with these species. Please contact us for more information.</p>

## 製品の特性

### 製品の状態

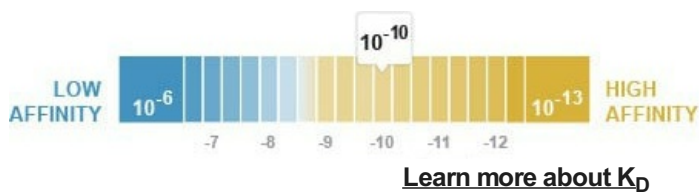
Liquid

### 保存方法

Shipped at 4°C. Store at +4°C. Do Not Freeze.

### 解離定数 ( $K_D$ 値)

$K_D = 1.97 \times 10^{-10}$  M



### バッファー

pH: 7.2

Constituent: PBS

### キャリア・フリー

はい

### 精製度

Protein A purified

### ポリ/モノ

モノクローナル

### クローン名

EPR6321

### アイソタイプ

IgG

## アプリケーション

### The Abpromise guarantee

**Abpromise保証は、次のテスト済みアプリケーションにおけるab247963の使用に適用されます**

アプリケーションノートには、推奨の開始希釈率がありますが、適切な希釈率につきましてはご確認ください。

アプリケーション	Abreviews	特記事項
WB		Use at an assay dependent concentration. Detects a band of approximately 22 kDa (predicted molecular weight: 22 kDa).

### 追加情報

Is unsuitable for Flow Cyt, IHC-P or IP.

## ターゲット情報

### 機能

CBF binds to the core site, 5'-PYGPYGGT-3', of a number of enhancers and promoters, including murine leukemia virus, polyomavirus enhancer, T-cell receptor enhancers, LCK, IL3 and GM-CSF promoters. CBFB enhances DNA binding by RUNX1.

### 関連疾患

Note=A chromosomal aberration involving CBFB is associated with acute myeloid leukemia of M4EO subtype. Pericentric inversion inv(16)(p13;q22). The inversion produces a fusion protein that consists of the 165 N-terminal residues of CBF-beta (PEPB2) with the tail region of MYH11.

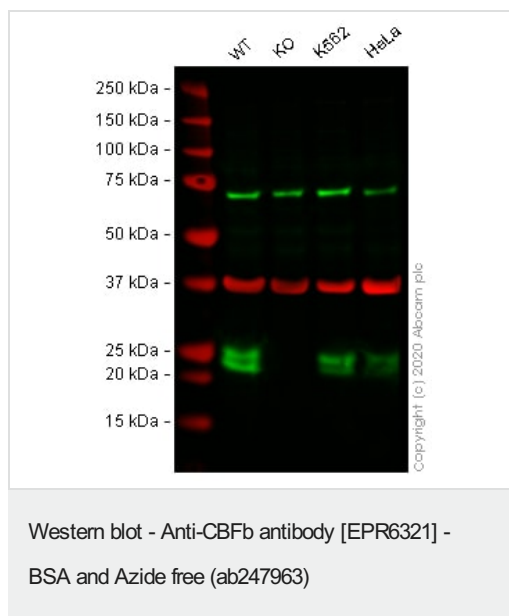
### 配列類似性

Belongs to the CBF-beta family.

### 細胞内局在

Nucleus.

## 画像



**All lanes :** Anti-CBFb antibody [EPR6321] ([ab124693](#)) at 1/1000 dilution

**Lane 1 :** Wild-type A431 cell lysate

**Lane 2 :** CBFB knockout A431 cell lysate

**Lane 3 :** K562 cell lysate

**Lane 4 :** HeLa cell lysate

Lysates/proteins at 20 µg per lane.

Performed under reducing conditions.

**Predicted band size:** 22 kDa

**Observed band size:** 24-25 kDa

This data was developed using the same antibody clone in a different buffer formulation ([ab124693](#)).

**Lanes 1 - 4:** Merged signal (red and green). Green - [ab124693](#) observed at 24-25 kDa. Red - loading control, [ab7291](#) (Mouse anti-Alpha Tubulin [DM1A]) observed at 55kDa.

[ab124693](#) was shown to react with CBFb in wild-type A431 cells in western blot. Loss of signal was observed when CBFB knockout sample was used. Wild-type and CBFB knockout cell lysates were subjected to SDS-PAGE. Membranes were blocked in 3% milk in TBS-T (0.1% Tween®) before incubation with [ab124693](#) and [ab7291](#) (Mouse anti-Alpha Tubulin [DM1A]) overnight at 4°C at a 1 in 1000 Dilution and a 1 in 20000 dilution respectively. Blots were incubated with Goat anti-Rabbit IgG H&L (IRDye® 800CW) preabsorbed ([ab216773](#)) and Goat anti-Mouse IgG H&L (IRDye® 680RD) preabsorbed ([ab216776](#)) secondary antibodies at 1 in 20000 dilution for 1 hour at room temperature before imaging.

### Why choose a recombinant antibody?



**Research with confidence**  
Consistent and reproducible results



**Long-term and scalable supply**  
Recombinant technology



**Success from the first experiment**  
Confirmed specificity



**Ethical standards compliant**  
Animal-free production

Anti-CBFb antibody [EPR6321] - BSA and Azide free (ab247963)

**Please note:** All products are "FOR RESEARCH USE ONLY. NOT FOR USE IN DIAGNOSTIC PROCEDURES"

### Our Abpromise to you: Quality guaranteed and expert technical support

---

- Replacement or refund for products not performing as stated on the datasheet
- Valid for 12 months from date of delivery
- Response to your inquiry within 24 hours
- We provide support in Chinese, English, French, German, Japanese and Spanish
- Extensive multi-media technical resources to help you
- We investigate all quality concerns to ensure our products perform to the highest standards

If the product does not perform as described on this datasheet, we will offer a refund or replacement. For full details of the Abpromise, please visit <https://www.abcam.co.jp/abpromise> or contact our technical team.

### Terms and conditions

---

- Guarantee only valid for products bought direct from Abcam or one of our authorized distributors