




Anti-Caveolin-2 antibody ab2911

★★★★☆ [4 Abreviews](#) [11 References](#) [画像数 2](#)

製品の概要

製品名	Anti-Caveolin-2 antibody
製品の詳細	Rabbit polyclonal to Caveolin-2
由来種	Rabbit
特異性	Detects caveolin-2 from rat tissues. This antibody does not detect caveolin-1 or -3.
アプリケーション	適用あり: WB
種交差性	交差種: Mouse, Rat 交差が予測される動物種: Sheep, Rabbit, Cow, Cat, Human, Pig, Chimpanzee, Gorilla, African green monkey, African bush elephant 
免疫原	Synthetic peptide corresponding to Rat Caveolin-2 aa 1-100. Database link: Q2IBC5 <div>  Run BLAST with  Run BLAST with </div>
特記事項	<p>The Life Science industry has been in the grips of a reproducibility crisis for a number of years. Abcam is leading the way in addressing this with our range of recombinant monoclonal antibodies and knockout edited cell lines for gold-standard validation. Please check that this product meets your needs before purchasing.</p> <p>If you have any questions, special requirements or concerns, please send us an inquiry and/or contact our Support team ahead of purchase. Recommended alternatives for this product can be found below, along with publications, customer reviews and Q&As</p>

製品の特性

製品の状態	Liquid
保存方法	Shipped at 4°C. Store at +4°C short term (1-2 weeks). Upon delivery aliquot. Store at -20°C or -80°C. Avoid freeze / thaw cycle.
バッファー	Preservative: 0.05% Sodium azide Constituents: 0.1% BSA, 99% PBS
精製度	Immunogen affinity purified
ポリ/モノ	ポリクローナル
アイソタイプ	IgG

アプリケーション

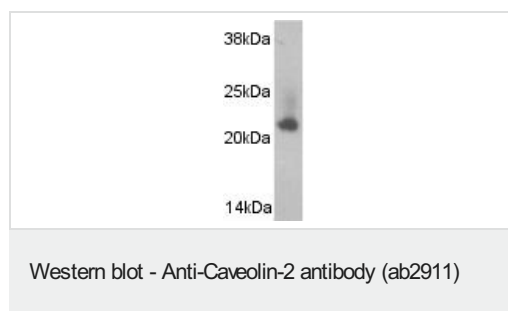
The Abpromise guarantee Abpromise保証は、 次のテスト済みアプリケーションにおけるab2911の使用に適用されます
アプリケーションノートには、推奨の開始希釈率がありますが、適切な希釈率につきましてはご検討ください。

アプリケーション	Abreviews	特記事項
WB	★★★★☆ (2)	Use at an assay dependent concentration. Can be blocked with Caveolin-2 peptide.

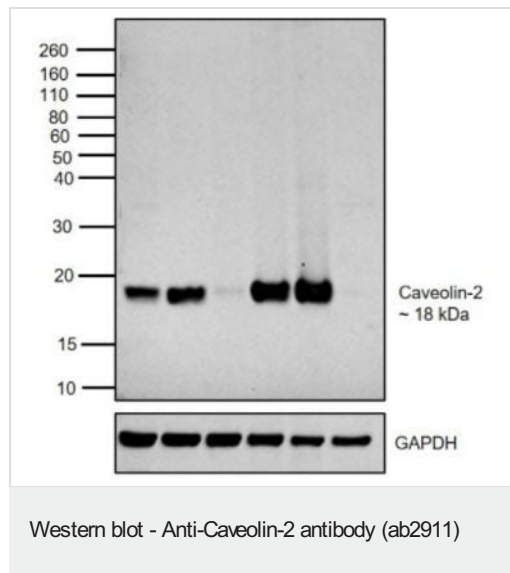
ターゲット情報

機能	May act as a scaffolding protein within caveolar membranes. Interacts directly with G-protein alpha subunits and can functionally regulate their activity. Acts as an accessory protein in conjunction with CAV1 in targeting to lipid rafts and driving caveolae formation. The Ser-36 phosphorylated form has a role in modulating mitosis in endothelial cells. Positive regulator of cellular mitogenesis of the MAPK signaling pathway. Required for the insulin-stimulated nuclear translocation and activation of MAPK1 and STAT3, and the subsequent regulation of cell cycle progression.
組織特異性	Expressed in endothelial cells, smooth muscle cells, skeletal myoblasts and fibroblasts.
配列類似性	Belongs to the caveolin family.
翻訳後修飾	Phosphorylated on serine and tyrosine residues. CAV1 promotes phosphorylation on Ser-23 which then targets the complex to the plasma membrane, lipid rafts and caveolae. Phosphorylation on Ser-36 appears to modulate mitosis in endothelial cells (By similarity). Phosphorylation on both Tyr-19 and Tyr-27 is required for insulin-induced 'Ser-727' phosphorylation of STAT3 and its activation. Phosphorylation on Tyr-19 is required for insulin-induced phosphorylation of MAPK1 and DNA binding of STAT3. Tyrosine phosphorylation is induced by both EGF and insulin.
細胞内局在	Nucleus. Cytoplasm. Golgi apparatus membrane. Cell membrane. Membrane > caveola. Potential hairpin-like structure in the membrane. Membrane protein of caveolae. Tyr-19-phosphorylated form is enriched at sites of cell-cell contact and is translocated to the nucleus in complex with MAPK1 in response to insulin (By similarity). Tyr-27-phosphorylated form is located both in the cytoplasm and plasma membrane. CAV1-mediated Ser-23-phosphorylated form locates to the plasma membrane. Ser-36-phosphorylated form resides in intracellular compartments.

画像



Western blot of caveolin-2 on rat skeletal muscle protein extract using ab2911.



All lanes : Anti-Caveolin-2 antibody (ab2911) at 2 µg/ml

Lane 1 : 3T3-L1 lysate

Lane 2 : 3T3-L1 differentiated to adipocytes

Lane 3 : Mouse Heart lysate

Lane 4 : Mouse Lung lysate

Lane 5 : Mouse Adipose lysate

Lane 6 : Mouse Spleen lysate

Secondary

All lanes : Goat anti-Rabbit IgG (H+L) Superclonal Recombinant

Secondary Antibody, HRP at 1/4000 dilution

Please note: All products are "FOR RESEARCH USE ONLY. NOT FOR USE IN DIAGNOSTIC PROCEDURES"

Our Abpromise to you: Quality guaranteed and expert technical support

- Replacement or refund for products not performing as stated on the datasheet
- Valid for 12 months from date of delivery
- Response to your inquiry within 24 hours
- We provide support in Chinese, English, French, German, Japanese and Spanish
- Extensive multi-media technical resources to help you
- We investigate all quality concerns to ensure our products perform to the highest standards

If the product does not perform as described on this datasheet, we will offer a refund or replacement. For full details of the Abpromise, please visit <https://www.abcam.co.jp/abpromise> or contact our technical team.

Terms and conditions

- Guarantee only valid for products bought direct from Abcam or one of our authorized distributors