

Anti-Cathepsin K antibody ab19027

★★★★★ [17 Abreviews](#) [147 References](#) [画像数 1](#)

製品の概要

製品名	Anti-Cathepsin K antibody
製品の詳細	Rabbit polyclonal to Cathepsin K
由来種	Rabbit
アプリケーション	適用あり: WB
種交差性	交差種: Rat
免疫原	Synthetic peptide, corresponding to a region within amino acids 300-329 of Rat Cathepsin K which includes residue 321. (Peptide available as ab41720 .)
ポジティブ・コントロール	WB: Rat kidney tissue lysate
特記事項	<p>This product is manufactured by BioVision, an Abcam company and was previously called 3588 Cathepsin K Antibody. 3588-100 is the same size as the 100 µg size of ab19027.</p> <p>The Life Science industry has been in the grips of a reproducibility crisis for a number of years. Abcam is leading the way in addressing this with our range of recombinant monoclonal antibodies and knockout edited cell lines for gold-standard validation. Please check that this product meets your needs before purchasing.</p> <p>If you have any questions, special requirements or concerns, please send us an inquiry and/or contact our Support team ahead of purchase. Recommended alternatives for this product can be found below, along with publications, customer reviews and Q&As</p>

製品の特性

製品の状態	Liquid
保存方法	Shipped at 4°C. Upon delivery aliquot and store at -20°C or -80°C. Avoid repeated freeze / thaw cycles.
バッファー	Preservative: 0.03% Proclin 300 Constituents: PBS, 30% Glycerol (glycerin, glycerine), 0.5% BSA, 0.015% EDTA
精製度	Protein A purified
ポリ/モノ	ポリクローナル
アイソタイプ	IgG

アプリケーション

The Abpromise guarantee

Abpromise保証は、次のテスト済みアプリケーションにおけるab19027の使用に適用されます

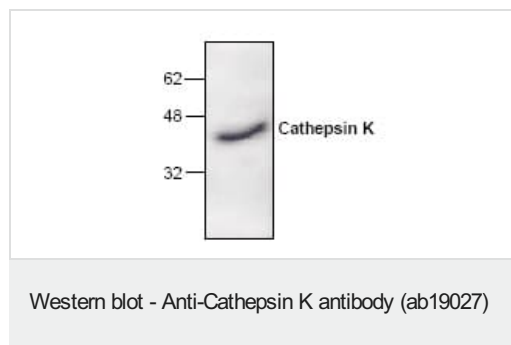
アプリケーションノートには、推奨の開始希釈率がありますが、適切な希釈率につきましてはご検討ください。

アプリケーション	Abreviews	特記事項
WB	★★★★★ (6)	Use a concentration of 0.5 - 4 µg/ml. Predicted molecular weight: 37 kDa.

ターゲット情報

機能	Closely involved in osteoclastic bone resorption and may participate partially in the disorder of bone remodeling. Displays potent endoprotease activity against fibrinogen at acid pH. May play an important role in extracellular matrix degradation.
組織特異性	Predominantly expressed in osteoclasts (bones).
関連疾患	Defects in CTSK are the cause of pycnodysostosis (PKND) [MIM:265800]. PKND is an autosomal recessive osteochondrodysplasia characterized by osteosclerosis and short stature.
配列類似性	Belongs to the peptidase C1 family.
細胞内局在	Lysosome.

画像



Anti-Cathepsin K antibody (ab19027) + Rat kidney tissue lysate

Predicted band size: 37 kDa

Please note: All products are "FOR RESEARCH USE ONLY. NOT FOR USE IN DIAGNOSTIC PROCEDURES"

Our Abpromise to you: Quality guaranteed and expert technical support

- Replacement or refund for products not performing as stated on the datasheet
- Valid for 12 months from date of delivery
- Response to your inquiry within 24 hours
- We provide support in Chinese, English, French, German, Japanese and Spanish
- Extensive multi-media technical resources to help you
- We investigate all quality concerns to ensure our products perform to the highest standards

If the product does not perform as described on this datasheet, we will offer a refund or replacement. For full details of the Abpromise, please visit <https://www.abcam.co.jp/abpromise> or contact our technical team.

Terms and conditions

- Guarantee only valid for products bought direct from Abcam or one of our authorized distributors