

Anti-Cathepsin D antibody [CTD-19] ab6313

★★★★★ [16 Abreviews](#) [64 References](#) [画像数 2](#)

製品の概要

製品名	Anti-Cathepsin D antibody [CTD-19]
製品の詳細	Mouse monoclonal [CTD-19] to Cathepsin D
由来種	Mouse
アプリケーション	適用あり: WB
種交差性	交差種: Human
免疫原	Full length native protein (purified) corresponding to Human Cathepsin D. Database link: P07339
ポジティブ・コントロール	Human breast carcinoma tissue or cell line extract.
特記事項	<p>This product was changed from ascites to tissue culture supernatant on 21 May 2019. Please note that the dilutions may need to be adjusted accordingly. If you have any questions, please do not hesitate to contact our scientific support team.</p> <p>The Life Science industry has been in the grips of a reproducibility crisis for a number of years. Abcam is leading the way in addressing this with our range of recombinant monoclonal antibodies and knockout edited cell lines for gold-standard validation. Please check that this product meets your needs before purchasing.</p> <p>If you have any questions, special requirements or concerns, please send us an inquiry and/or contact our Support team ahead of purchase. Recommended alternatives for this product can be found below, along with publications, customer reviews and Q&As</p>

製品の特性

製品の状態	Liquid
保存方法	Shipped at 4°C. Upon delivery aliquot and store at -20°C or -80°C. Avoid repeated freeze / thaw cycles.
バッファー	Preservative: 0.097% Sodium azide
精製度	Proprietary Purification
特記事項(精製)	Purified from TCS
ポリ/モノ	モノクローナル
クローン名	CTD-19
アイソタイプ	IgG2a

アプリケーション

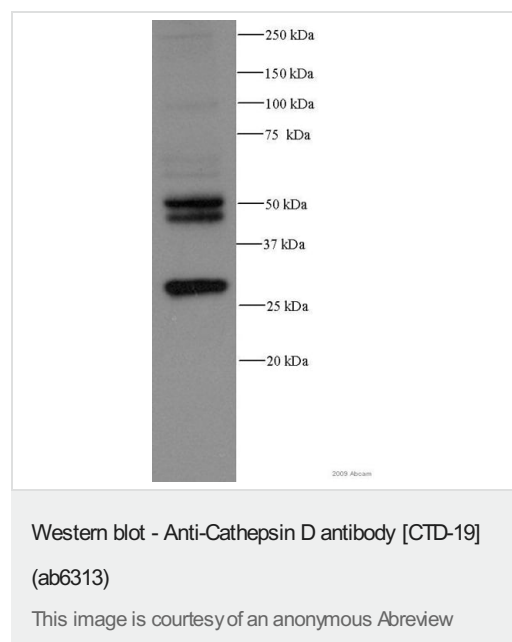
The Abpromise guarantee Abpromise保証は、次のテスト済みアプリケーションにおけるab6313の使用に適用されます
アプリケーションノートには、推奨の開始希釈率がありますが、適切な希釈率につきましてはご検討ください。

アプリケーション	Abreviews	特記事項
WB	★★★★★ (12)	Use at an assay dependent concentration. Detects a band of approximately 52 kDa.

ターゲット情報

機能	Acid protease active in intracellular protein breakdown. Involved in the pathogenesis of several diseases such as breast cancer and possibly Alzheimer disease.
組織特異性	Expressed in the aorta extracellular space (at protein level).
関連疾患	Ceroid lipofuscinosis, neuronal, 10
配列類似性	Belongs to the peptidase A1 family. Contains 1 peptidase A1 domain.
翻訳後修飾	N- and O-glycosylated.
細胞内局在	Lysosome. Melanosome. Secreted, extracellular space. Identified by mass spectrometry in melanosome fractions from stage I to stage IV. In aortic samples, detected as an extracellular protein loosely bound to the matrix (PubMed:20551380).

画像



Anti-Cathepsin D antibody [CTD-19] (ab6313) at 1/1000 dilution +
MDA MB 231 whole cell lysate at 20 µg

Secondary

HRP-conjugated monoclonal sheep anti-mouse IgG at 1/5000
dilution

Developed using the ECL technique.

Performed under reducing conditions.

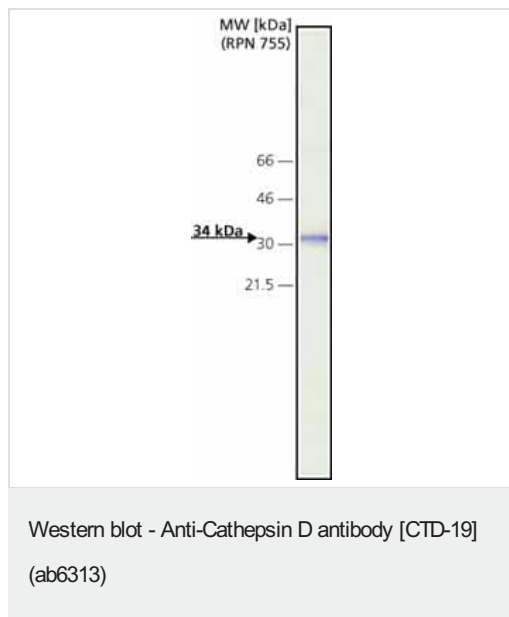
Observed band size: 28,48,50 kDa

Exposure time: 2 minutes

Blocked with 5% milk for 1 hour at 22°C.

Incubated with the primary antibody for 1 hour at 22°C in 5% TBS-T.

This image was generated using the ascites version of the product.



Anti-Cathepsin D antibody [CTD-19] (ab6313) at 1/4000 dilution + MCF7 Human breast carcinoma cells

This image was generated using the ascites version of the product.

Please note: All products are "FOR RESEARCH USE ONLY. NOT FOR USE IN DIAGNOSTIC PROCEDURES"

Our Abpromise to you: Quality guaranteed and expert technical support

- Replacement or refund for products not performing as stated on the datasheet
- Valid for 12 months from date of delivery
- Response to your inquiry within 24 hours
- We provide support in Chinese, English, French, German, Japanese and Spanish
- Extensive multi-media technical resources to help you
- We investigate all quality concerns to ensure our products perform to the highest standards

If the product does not perform as described on this datasheet, we will offer a refund or replacement. For full details of the Abpromise, please visit <https://www.abcam.co.jp/abpromise> or contact our technical team.

Terms and conditions

- Guarantee only valid for products bought direct from Abcam or one of our authorized distributors