


Anti-Cathepsin D antibody ab97499

面格新 1

医薬用外劇物

製品の概要

| | |
|----------|---|
| 製品名 | Anti-Cathepsin D antibody |
| 製品の詳細 | Rabbit polyclonal to Cathepsin D |
| 由来種 | Rabbit |
| アプリケーション | 適用あり: WB |
| 種交差性 | 交差種: Human 交差が予測される動物種: Mouse, Dog, Pig  |
| 免疫原 | Recombinant fragment containing a sequence corresponding to a region within amino acids 72-262 of Human Cathepsin D (NP_001900). |
| 特記事項 | <p>The Life Science industry has been in the grips of a reproducibility crisis for a number of years. Abcam is leading the way in addressing this with our range of recombinant monoclonal antibodies and knockout edited cell lines for gold-standard validation. Please check that this product meets your needs before purchasing.</p> <p>If you have any questions, special requirements or concerns, please send us an inquiry and/or contact our Support team ahead of purchase. Recommended alternatives for this product can be found below, along with publications, customer reviews and Q&As</p> |

製品の特性

| | |
|--------|---|
| 製品の状態 | Liquid |
| 保存方法 | Shipped at 4°C. Upon delivery aliquot. Store at -20°C or -80°C. Avoid freeze / thaw cycle. |
| バッファー | pH: 7.00 Preservative: 0.01% Thimerosal (merthiolate) Constituents: 1.21% Tris, 0.75% Glycine, 10% Glycerol (glycerin, glycerine) |
| 精製度 | Immunogen affinity purified |
| ポリ/モノ | ポリクローナル |
| アイソタイプ | IgG |

アプリケーション

The Abpromise guarantee

Abpromise保証は、次のテスト済みアプリケーションにおけるab97499の使用に適用されます

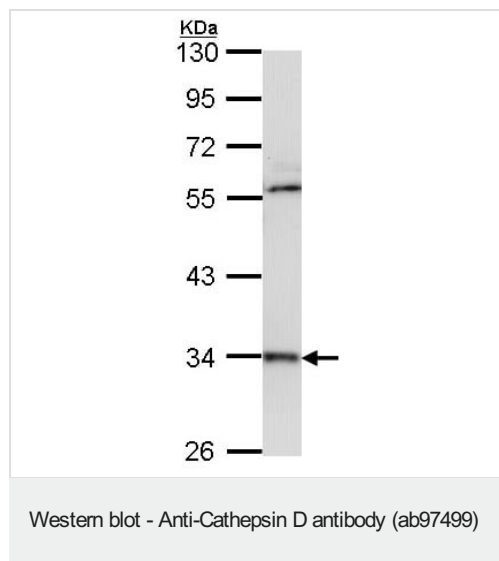
アプリケーションノートには、推奨の開始希釈率がありますが、適切な希釈率につきましてはご確認ください。

| アプリケーション | Abreviews | 特記事項 |
|----------|-----------|---|
| WB | | 1/500 - 1/3000. Predicted molecular weight: 46 kDa. |

ターゲット情報

| | |
|-------|---|
| 機能 | Acid protease active in intracellular protein breakdown. Involved in the pathogenesis of several diseases such as breast cancer and possibly Alzheimer disease. |
| 組織特異性 | Expressed in the aorta extracellular space (at protein level). |
| 関連疾患 | Ceroid lipofuscinosis, neuronal, 10 |
| 配列類似性 | Belongs to the peptidase A1 family. Contains 1 peptidase A1 domain. |
| 翻訳後修飾 | N- and O-glycosylated. |
| 細胞内局在 | Lysosome. Melanosome. Secreted, extracellular space. Identified by mass spectrometry in melanosome fractions from stage I to stage IV. In aortic samples, detected as an extracellular protein loosely bound to the matrix (PubMed:20551380). |

画像



Anti-Cathepsin D antibody (ab97499) at 1/1000 dilution + H1299 whole cell lysate at 30 µg

Predicted band size: 46 kDa

10% SDS-PAGE

Please note: All products are "FOR RESEARCH USE ONLY. NOT FOR USE IN DIAGNOSTIC PROCEDURES"

Our Abpromise to you: Quality guaranteed and expert technical support

- Replacement or refund for products not performing as stated on the datasheet
- Valid for 12 months from date of delivery
- Response to your inquiry within 24 hours

- We provide support in Chinese, English, French, German, Japanese and Spanish
- Extensive multi-media technical resources to help you
- We investigate all quality concerns to ensure our products perform to the highest standards

If the product does not perform as described on this datasheet, we will offer a refund or replacement. For full details of the Abpromise, please visit <https://www.abcam.co.jp/abpromise> or contact our technical team.

Terms and conditions

- Guarantee only valid for products bought direct from Abcam or one of our authorized distributors