

Anti-Cathepsin D antibody ab826

★★★★★ [2 Abreviews](#) [5 References](#) [画像数 1](#)

製品の概要

製品名	Anti-Cathepsin D antibody
製品の詳細	Rabbit polyclonal to Cathepsin D
由来種	Rabbit
特異性	This antibody reacts with the zymogen as well as the activated form of cathepsin D. It stains fibroblasts and macrophages strongly but stains weakly with the myoepithelial cells of breast. It also stains sweat ducts and glands in the skin, islets cells and granules of pancreatic acini.
アプリケーション	適用あり: IHC-P
種交差性	交差種: Human
免疫原	Full length protein corresponding to Human Cathepsin D. Cathepsin D isolated from human liver
特記事項	<p>The Life Science industry has been in the grips of a reproducibility crisis for a number of years. Abcam is leading the way in addressing this with our range of recombinant monoclonal antibodies and knockout edited cell lines for gold-standard validation. Please check that this product meets your needs before purchasing.</p> <p>If you have any questions, special requirements or concerns, please send us an inquiry and/or contact our Support team ahead of purchase. Recommended alternatives for this product can be found below, along with publications, customer reviews and Q&As</p>

製品の特性

製品の状態	Liquid
保存方法	Shipped at 4°C. Store at +4°C short term (1-2 weeks). Store at -20°C or -80°C. Avoid freeze / thaw cycle.
バッファー	pH: 7.3 Preservative: 0.05% Sodium azide Constituent: 1% BSA
精製度	Protein A purified
ポリ/モノ	ポリクローナル
アイソタイプ	IgG

アプリケーション

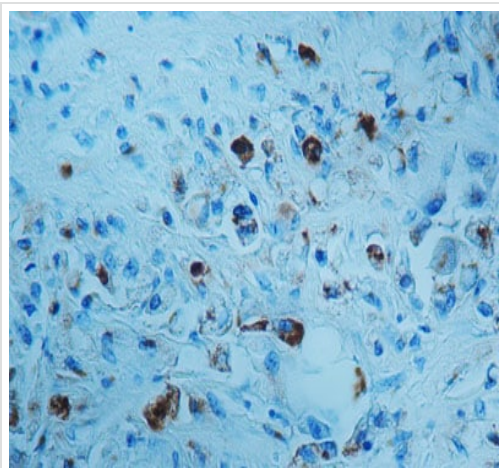
The Abpromise guarantee **Abpromise保証は、次のテスト済みアプリケーションにおけるab826の使用に適用されます**
 アプリケーションノートには、推奨の開始希釈率がありますが、適切な希釈率につきましてはご検討ください。

アプリケーション	Abreviews	特記事項
IHC-P	★★★★★ (1)	1/75 - 1/100. ABC method.

ターゲット情報

機能	Acid protease active in intracellular protein breakdown. Involved in the pathogenesis of several diseases such as breast cancer and possibly Alzheimer disease.
組織特異性	Expressed in the aorta extracellular space (at protein level).
関連疾患	Ceroid lipofuscinosis, neuronal, 10
配列類似性	Belongs to the peptidase A1 family. Contains 1 peptidase A1 domain.
翻訳後修飾	N- and O-glycosylated.
細胞内局在	Lysosome. Melanosome. Secreted, extracellular space. Identified by mass spectrometry in melanosome fractions from stage I to stage IV. In aortic samples, detected as an extracellular protein loosely bound to the matrix (PubMed:20551380).

画像



ab826 staining Cathepsin D in formalin-fixed, paraffin-embedded Human prostate tissue by Immunohistochemistry.

Immunohistochemistry (Formalin/PFA-fixed paraffin-embedded sections) - Anti-Cathepsin D antibody (ab826)

Please note: All products are "FOR RESEARCH USE ONLY. NOT FOR USE IN DIAGNOSTIC PROCEDURES"

Our Abpromise to you: Quality guaranteed and expert technical support

- Replacement or refund for products not performing as stated on the datasheet

- Valid for 12 months from date of delivery
- Response to your inquiry within 24 hours

- We provide support in Chinese, English, French, German, Japanese and Spanish
- Extensive multi-media technical resources to help you
- We investigate all quality concerns to ensure our products perform to the highest standards

If the product does not perform as described on this datasheet, we will offer a refund or replacement. For full details of the Abpromise, please visit <https://www.abcam.co.jp/abpromise> or contact our technical team.

Terms and conditions

- Guarantee only valid for products bought direct from Abcam or one of our authorized distributors