

# Anti-Cathepsin B antibody ab190077

**3 References** [画像数 4](#)

### 製品の概要

製品名	Anti-Cathepsin B antibody
製品の詳細	Rabbit polyclonal to Cathepsin B
由来種	Rabbit
アプリケーション	<b>適用あり:</b> IHC-P, WB, Flow Cyt (Intra)
種交差性	<b>交差種:</b> Human
免疫原	Synthetic peptide corresponding to Human Cathepsin B aa 198-227 (internal sequence) conjugated to keyhole limpet haemocyanin. Database link: <b><u>P07858</u></b>
ポジティブ・コントロール	WB: Y79 cell lysate. Flow Cyt (Intra): HepG2 cells. IHC-P: Human liver and hepatocarcinoma tissue.
特記事項	<p>The Life Science industry has been in the grips of a reproducibility crisis for a number of years. Abcam is leading the way in addressing this with our range of recombinant monoclonal antibodies and knockout edited cell lines for gold-standard validation. Please check that this product meets your needs before purchasing.</p> <p>If you have any questions, special requirements or concerns, please send us an inquiry and/or contact our Support team ahead of purchase. Recommended alternatives for this product can be found below, along with publications, customer reviews and Q&amp;As</p>

### 製品の特性

製品の状態	Liquid
保存方法	Shipped at 4°C. Store at +4°C short term (1-2 weeks). Upon delivery aliquot. Store at -20°C long term. Avoid freeze / thaw cycle.
バッファー	pH: 7.4 Preservative: 0.09% Sodium azide Constituent: 99% PBS
精製度	Immunogen affinity purified
ポリ/モノ	ポリクローナル
アイソタイプ	IgG

## アプリケーション

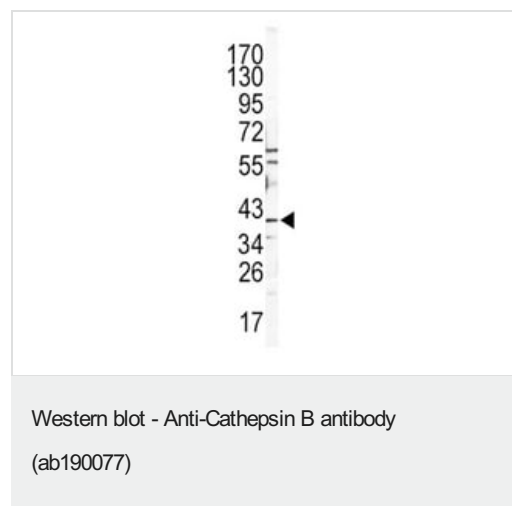
**The Abpromise guarantee**      Abpromise保証は、 次のテスト済みアプリケーションにおけるab190077の使用に適用されます  
アプリケーションノートには、推奨の開始希釈率がありますが、適切な希釈率につきましてはご検討ください。

アプリケーション	Abreviews	特記事項
IHC-P		Use a concentration of 10 µg/ml.
WB		1/1000. Predicted molecular weight: 38 kDa.
Flow Cyt (Intra)		1/10 - 1/50. <b>ab171870</b> - Rabbit polyclonal IgG, is suitable for use as an isotype control with this antibody.

## ターゲット情報

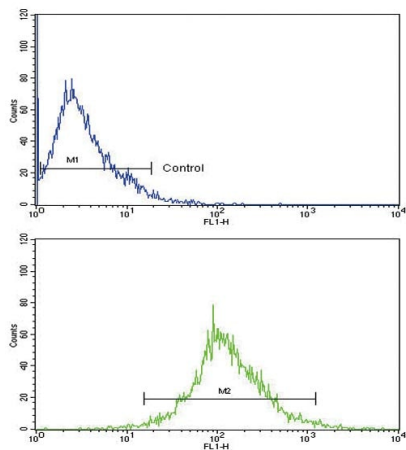
機能	Thiol protease which is believed to participate in intracellular degradation and turnover of proteins. Has also been implicated in tumor invasion and metastasis.
配列類似性	Belongs to the peptidase C1 family.
細胞内局在	Lysosome. Melanosome. Identified by mass spectrometry in melanosome fractions from stage I to stage IV.

## 画像



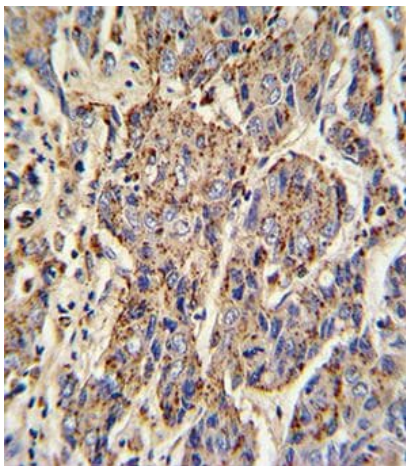
Anti-Cathepsin B antibody (ab190077) at 1/1000 dilution + Y79 cell lysate at 35 µg

**Predicted band size:** 38 kDa



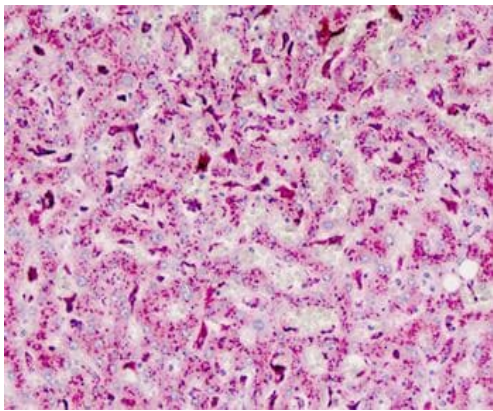
Flow Cytometry (Intracellular) - Anti-Cathepsin B antibody (ab190077)

Intracellular flow cytometric analysis of HepG2 cells labeling Cathepsin B with ab190077 at 1/10 dilution (lower histogram) compared to a negative control (upper histogram). FITC-conjugated goat-anti-rabbit secondary antibodies were used for the analysis.



Immunohistochemistry (Formalin/PFA-fixed paraffin-embedded sections) - Anti-Cathepsin B antibody (ab190077)

Immunohistochemical analysis of formalin-fixed, paraffin-embedded Human hepatocarcinoma tissue labeling Cathepsin B with ab190077 at 10 µg/ml followed by peroxidase-conjugated secondary antibody and DAB staining.



Immunohistochemical analysis of formalin-fixed, paraffin-embedded Human liver tissue labeling Cathepsin B with ab190077 at 10 µg/ml.

Immunohistochemistry (Formalin/PFA-fixed paraffin-embedded sections) - Anti-Cathepsin B antibody (ab190077)

**Please note:** All products are "FOR RESEARCH USE ONLY. NOT FOR USE IN DIAGNOSTIC PROCEDURES"

### Our Abpromise to you: Quality guaranteed and expert technical support

---

- Replacement or refund for products not performing as stated on the datasheet
- Valid for 12 months from date of delivery
- Response to your inquiry within 24 hours
- We provide support in Chinese, English, French, German, Japanese and Spanish
- Extensive multi-media technical resources to help you
- We investigate all quality concerns to ensure our products perform to the highest standards

If the product does not perform as described on this datasheet, we will offer a refund or replacement. For full details of the Abpromise, please visit <https://www.abcam.co.jp/abpromise> or contact our technical team.

### Terms and conditions

---

- Guarantee only valid for products bought direct from Abcam or one of our authorized distributors