


Anti-Caspase-6/CASP-6 antibody [EPR4405] - BSA and Azide free ab247635

KO 評価済 リコンビナント RabMAb

画像数 4

製品の概要

製品名	Anti-Caspase-6/CASP-6 antibody [EPR4405] - BSA and Azide free
製品の詳細	Rabbit monoclonal [EPR4405] to Caspase-6/CASP-6 - BSA and Azide free
由来種	Rabbit
特異性	This antibody detects both the full length and cleaved forms of Caspase-6/CASP-6.
アプリケーション	適用あり: Flow Cyt (Intra), WB 適用なし: ICC/IF or IHC-P
種交差性	交差種: Mouse, Human 交差が予測される動物種: Rat 
免疫原	Synthetic peptide. This information is proprietary to Abcam and/or its suppliers.
特記事項	<p>ab247635 is the carrier-free version of ab108335.</p> <p>Our carrier-free antibodies are typically supplied in a PBS-only formulation, purified and free of BSA, sodium azide and glycerol. The carrier-free buffer and high concentration allow for increased conjugation efficiency.</p> <p>This conjugation-ready format is designed for use with fluorochromes, metal isotopes, oligonucleotides, and enzymes, which makes them ideal for antibody labelling, functional and cell-based assays, flow-based assays (e.g. mass cytometry) and Multiplex Imaging applications.</p> <p>Use our conjugation kits for antibody conjugates that are ready-to-use in as little as 20 minutes with <1 minute hands-on-time and 100% antibody recovery: available for fluorescent dyes, HRP, biotin and gold.</p> <p>This product is compatible with the Maxpar[®] Antibody Labeling Kit from Fluidigm, without the need for antibody preparation. Maxpar[®] is a trademark of Fluidigm Canada Inc.</p> <p>This product is a recombinant monoclonal antibody, which offers several advantages including:</p> <ul style="list-style-type: none"> - High batch-to-batch consistency and reproducibility - Improved sensitivity and specificity - Long-term security of supply - Animal-free production <p>For more information see here.</p> <p>Our RabMAb[®] technology is a patented hybridoma-based technology for making rabbit</p>

monoclonal antibodies. For details on our patents, please refer to [RabMAb® patents](#).

製品の特性

製品の状態	Liquid
保存方法	Shipped at 4°C. Store at +4°C. Do Not Freeze.
バッファー	pH: 7.2 Constituent: PBS
キャリア・フリー	はい
精製度	Protein A purified
ポリ/モノ	モノクローナル
クローン名	EPR4405
アイソタイプ	IgG

アプリケーション

The Abpromise guarantee **Abpromise保証は、**次のテスト済みアプリケーションにおけるab247635の使用に適用されます
アプリケーションノートには、推奨の開始希釈率がありますが、適切な希釈率につきましてはご検討ください。

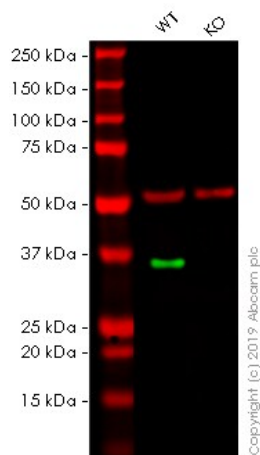
アプリケーション	Abreviews	特記事項
Flow Cyt (Intra)		Use at an assay dependent concentration.
WB		Use at an assay dependent concentration. Predicted molecular weight: 33 kDa.

追加情報 Is unsuitable for ICC/IF or IHC-P.

ターゲット情報

機能	Involved in the activation cascade of caspases responsible for apoptosis execution. Cleaves poly(ADP-ribose) polymerase in vitro, as well as lamins. Overexpression promotes programmed cell death.
配列類似性	Belongs to the peptidase C14A family.
翻訳後修飾	Cleavages by caspase-3, caspase-8 or -10 generate the two active subunits.
細胞内局在	Cytoplasm.

画像



Western blot - Anti-Caspase-6/CASP-6 antibody [EPR4405] - BSA and Azide free (ab247635)

All lanes : Anti-Caspase-6/CASP-6 antibody [EPR4405] ([ab108335](#)) at 1/1000 dilution

Lane 1 : Wild-type HAP1 whole cell lysate

Lane 2 : CASP6 knockout HAP1 whole cell lysate

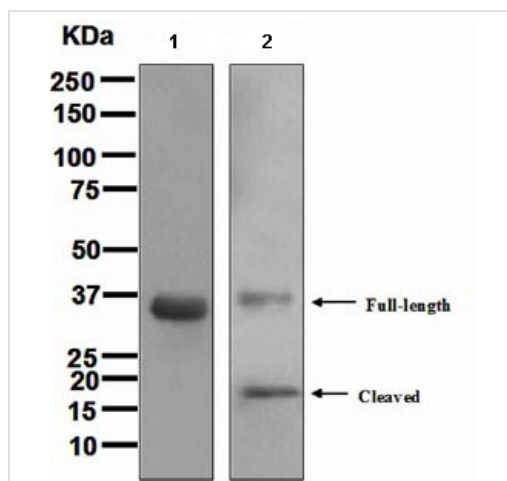
Lysates/proteins at 20 µg per lane.

Predicted band size: 33 kDa

This data was developed using [ab108335](#), the same antibody clone in a different buffer formulation.

Lanes 1 - 2: Merged signal (red and green). Green - [ab108335](#) observed at 37 kDa. Red - loading control, [ab7291](#), observed at 50 kDa.

[ab108335](#) was shown to specifically react with in wild-type HAP1 cells as signal was lost in CASP6 knockout cells. Wild-type and CASP6 knockout samples were subjected to SDS-PAGE. The membrane was blocked with 3% NF Milk. [ab108335](#) and [ab7291](#) (Mouse anti Tubulin loading control) were incubated overnight at 4°C at 1/1000 dilution and 1/20000 dilution respectively. Blots were developed with Goat anti-Rabbit IgG H&L (IRDye® 800CW) preabsorbed [ab216773](#) and Goat anti-Mouse IgG H&L (IRDye® 680RD) preabsorbed [ab216776](#) secondary antibodies at 1/20000 dilution for 1 hour at room temperature before imaging.



Western blot - Anti-Caspase-6/CASP-6 antibody [EPR4405] - BSA and Azide free (ab247635)

All lanes : Anti-Caspase-6/CASP-6 antibody [EPR4405] ([ab108335](#)) at 1/1000 dilution

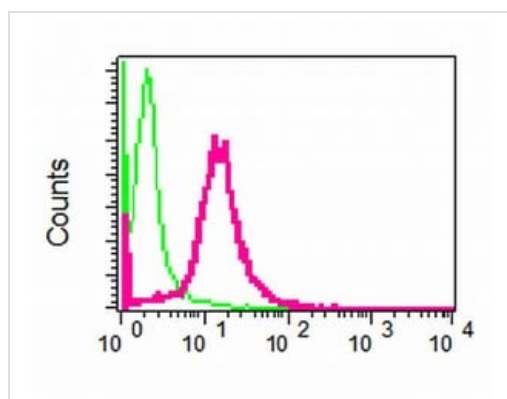
Lane 1 : Jurkat cell lysate

Lane 2 : Jurkat + staurosporine cell lysate

Lysates/proteins at 10 µg per lane.

Predicted band size: 33 kDa

This data was developed using [ab108335](#), the same antibody clone in a different buffer formulation.



Flow Cytometry (Intracellular) - Anti-Caspase-6/CASP-6 antibody [EPR4405] - BSA and Azide free (ab247635)

This data was developed using [ab108335](#), the same antibody clone in a different buffer formulation.

[ab108335](#), at 1/10 dilution, staining Caspase-6/CASP-6 in permeabilized Jurkat cells by intracellular flow cytometry (shown in red). Rabbit IgG shown in green (negative).

Why choose a recombinant antibody?

Research with confidence
Consistent and reproducible results

Long-term and scalable supply
Recombinant technology

Success from the first experiment
Confirmed specificity

Ethical standards compliant
Animal-free production

Anti-Caspase-6/CASP-6 antibody [EPR4405] - BSA and Azide free (ab247635)

Please note: All products are "FOR RESEARCH USE ONLY. NOT FOR USE IN DIAGNOSTIC PROCEDURES"

Our Abpromise to you: Quality guaranteed and expert technical support

- Replacement or refund for products not performing as stated on the datasheet
- Valid for 12 months from date of delivery
- Response to your inquiry within 24 hours

- We provide support in Chinese, English, French, German, Japanese and Spanish
- Extensive multi-media technical resources to help you
- We investigate all quality concerns to ensure our products perform to the highest standards

If the product does not perform as described on this datasheet, we will offer a refund or replacement. For full details of the Abpromise, please visit <https://www.abcam.co.jp/abpromise> or contact our technical team.

Terms and conditions

- Guarantee only valid for products bought direct from Abcam or one of our authorized distributors