


Anti-Caspase-6/CASP-6 antibody [EPR4405] ab108335

KO 評価済 リコンビナント RabMAb

★★★★☆ 3 Abreviews 6 References 画像数 4

製品の概要

製品名	Anti-Caspase-6/CASP-6 antibody [EPR4405]
製品の詳細	Rabbit monoclonal [EPR4405] to Caspase-6/CASP-6
由来種	Rabbit
特異性	ab108335 detects both the full length and cleaved forms of Caspase-6/CASP-6.
アプリケーション	適用あり: Flow Cyt (Intra), WB 適用なし: ICC/IF or IHC-P
種交差性	交差種: Mouse, Human 交差が予測される動物種: Rat 
免疫原	Synthetic peptide. This information is proprietary to Abcam and/or its suppliers.
ポジティブ・コントロール	Jurkat cells and cell lysate.
特記事項	This product is a recombinant monoclonal antibody, which offers several advantages including: <ul style="list-style-type: none"> - High batch-to-batch consistency and reproducibility - Improved sensitivity and specificity - Long-term security of supply - Animal-free production For more information see here . Our RabMAb [®] technology is a patented hybridoma-based technology for making rabbit monoclonal antibodies. For details on our patents, please refer to RabMAb[®] patents .

製品の特性

製品の状態	Liquid
保存方法	Shipped at 4°C. Store at +4°C short term (1-2 weeks). Upon delivery aliquot. Store at -20°C. Avoid freeze / thaw cycle.
バッファー	pH: 7.20 Preservative: 0.01% Sodium azide Constituents: 9% PBS, 40% Glycerol (glycerin, glycerine), 0.05% BSA, 50% Tissue culture supernatant
精製度	Protein A purified

ポリ/モノ	モノクローナル
クローン名	EPR4405
アイソタイプ	IgG

アプリケーション

The Abpromise guarantee Abpromise保証は、次のテスト済みアプリケーションにおけるab108335の使用に適用されます
 アプリケーションノートには、推奨の開始希釈率がありますが、適切な希釈率につきましてはご確認ください。

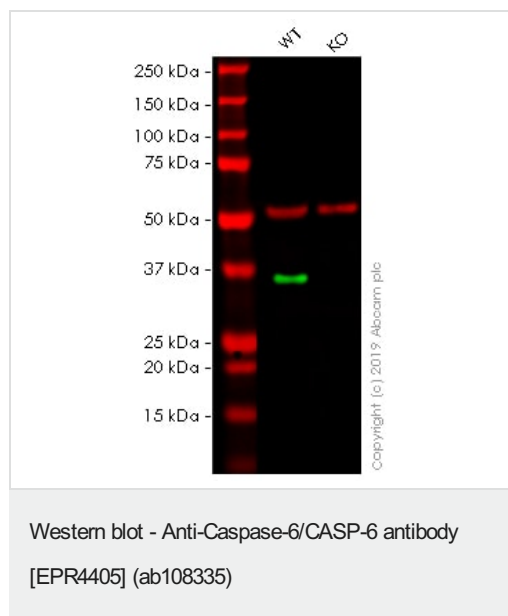
アプリケーション	Abreviews	特記事項
Flow Cyt (Intra)		1/10 - 1/100. ab172730 - Rabbit monoclonal IgG, is suitable for use as an isotype control with this antibody.
WB		1/1000 - 1/10000. Predicted molecular weight: 33 kDa.

追加情報 Is unsuitable for ICC/IF or IHC-P.

ターゲット情報

機能	Involved in the activation cascade of caspases responsible for apoptosis execution. Cleaves poly(ADP-ribose) polymerase in vitro, as well as lamins. Overexpression promotes programmed cell death.
配列類似性	Belongs to the peptidase C14A family.
翻訳後修飾	Cleavages by caspase-3, caspase-8 or -10 generate the two active subunits.
細胞内局在	Cytoplasm.

画像



All lanes : Anti-Caspase-6/CASP-6 antibody [EPR4405]
 (ab108335) at 1/1000 dilution

Lane 1 : Wild-type HAP1 whole cell lysate

Lane 2 : CASP6 knockout HAP1 whole cell lysate

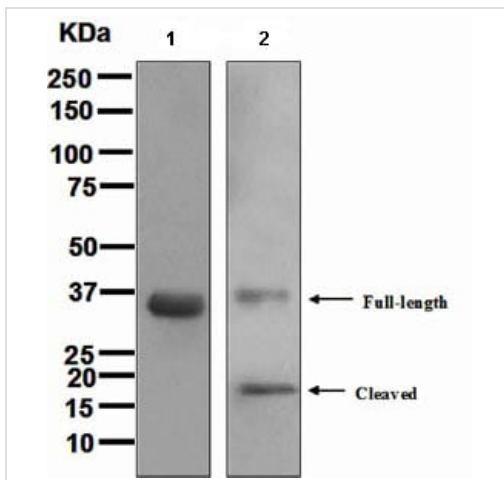
Lysates/proteins at 20 µg per lane.

Predicted band size: 33 kDa

Lanes 1 - 2: Merged signal (red and green). Green - ab108335 observed at 37 kDa. Red - loading control, **ab7291**, observed at 50

kDa.

ab108335 was shown to specifically react with in wild-type HAP1 cells as signal was lost in CASP6 knockout cells. Wild-type and CASP6 knockout samples were subjected to SDS-PAGE. The membrane was blocked with 3% NF Milk. Ab108335 and **ab7291** (Mouse anti Tubulin loading control) were incubated overnight at 4°C at 1/1000 dilution and 1/20000 dilution respectively. Blots were developed with Goat anti-Rabbit IgG H&L (IRDye® 800CW) preabsorbed **ab216773** and Goat anti-Mouse IgG H&L (IRDye® 680RD) preabsorbed **ab216776** secondary antibodies at 1/20000 dilution for 1 hour at room temperature before imaging.



Western blot - Anti-Caspase-6/CASP-6 antibody [EPR4405] (ab108335)

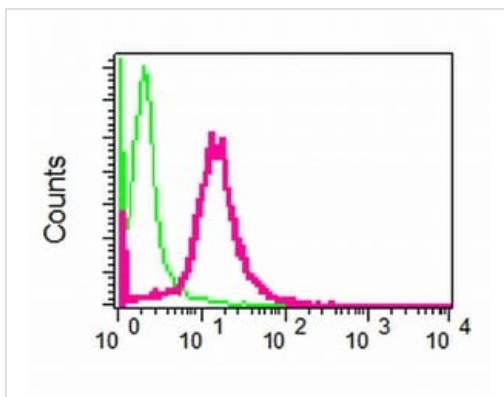
All lanes : Anti-Caspase-6/CASP-6 antibody [EPR4405] (ab108335) at 1/1000 dilution

Lane 1 : Jurkat cell lysate

Lane 2 : Jurkat + staurosporine cell lysate

Lysates/proteins at 10 µg per lane.

Predicted band size: 33 kDa



Flow Cytometry (Intracellular) - Anti-Caspase-6/CASP-6 antibody [EPR4405] (ab108335)

ab108335, at 1/10 dilution, staining Caspase-6/CASP-6 in permeabilized Jurkat cells by intracellular flow cytometry (shown in red). Rabbit IgG shown in green (negative).

Why choose a recombinant antibody?



Research with confidence
Consistent and reproducible results



Long-term and scalable supply
Recombinant technology



Success from the first experiment
Confirmed specificity



Ethical standards compliant
Animal-free production

Anti-Caspase-6/CASP-6 antibody [EPR4405]
(ab108335)

Please note: All products are "FOR RESEARCH USE ONLY. NOT FOR USE IN DIAGNOSTIC PROCEDURES"

Our Abpromise to you: Quality guaranteed and expert technical support

- Replacement or refund for products not performing as stated on the datasheet
- Valid for 12 months from date of delivery
- Response to your inquiry within 24 hours
- We provide support in Chinese, English, French, German, Japanese and Spanish
- Extensive multi-media technical resources to help you
- We investigate all quality concerns to ensure our products perform to the highest standards

If the product does not perform as described on this datasheet, we will offer a refund or replacement. For full details of the Abpromise, please visit <https://www.abcam.co.jp/abpromise> or contact our technical team.

Terms and conditions

- Guarantee only valid for products bought direct from Abcam or one of our authorized distributors