


Anti-Caspase-6/CASP-6 antibody [EP1325Y] ab52951

リコンビナント RabMAb

1 Abreviews **画像数 5**

製品の概要

製品名	Anti-Caspase-6/CASP-6 antibody [EP1325Y]
製品の詳細	Rabbit monoclonal [EP1325Y] to Caspase-6/CASP-6
由来種	Rabbit
特異性	ab52951 should recognize the pro-form of Caspase-6/CASP-6.
アプリケーション	適用あり: Flow Cyt (Intra), WB, IHC-P, ICC/IF
種交差性	交差種: Human 交差が予測される動物種: Mouse, Rat 
免疫原	Synthetic peptide within Human Caspase-6/CASP-6 aa 150-250. The exact sequence is proprietary. Database link: P55212
ポジティブ・コントロール	MCF-7 cell lysate, human breast carcinoma and HeLa cells.
特記事項	This product is a recombinant monoclonal antibody, which offers several advantages including: <ul style="list-style-type: none">- High batch-to-batch consistency and reproducibility- Improved sensitivity and specificity- Long-term security of supply- Animal-free production For more information see here . Our RabMAb [®] technology is a patented hybridoma-based technology for making rabbit monoclonal antibodies. For details on our patents, please refer to RabMAb[®] patents .

製品の特性

製品の状態	Liquid
保存方法	Shipped at 4°C. Store at +4°C short term (1-2 weeks). Upon delivery aliquot. Store at -20°C. Avoid freeze / thaw cycle.
バッファー	pH: 7.20 Preservative: 0.05% Sodium azide Constituents: 0.1% BSA, 40% Glycerol (glycerin, glycerine), 9.85% Tris glycine, 50% Tissue culture supernatant
精製度	Protein A purified

ポリ/モノ	モノクローナル
クローン名	EP1325Y
アイソタイプ	IgG

アプリケーション

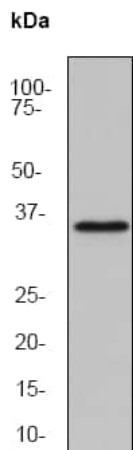
The Abpromise guarantee **Abpromise保証は、次のテスト済みアプリケーションにおけるab52951の使用に適用されず**
 アプリケーションノートには、推奨の開始希釈率がありますが、適切な希釈率につきましてはご検討ください。

アプリケーション	Abreviews	特記事項
Flow Cyt (Intra)		1/1000. ab172730 - Rabbit monoclonal IgG, is suitable for use as an isotype control with this antibody.
WB		1/20000. Detects a band of approximately 34 kDa (predicted molecular weight: 34 kDa).
IHC-P		1/100 - 1/250. Perform heat mediated antigen retrieval with citrate buffer pH 6 before commencing with IHC staining protocol. Antigen retrieval recommended
ICC/IF		1/100 - 1/250.

ターゲット情報

機能	Involved in the activation cascade of caspases responsible for apoptosis execution. Cleaves poly(ADP-ribose) polymerase in vitro, as well as lamins. Overexpression promotes programmed cell death.
配列類似性	Belongs to the peptidase C14A family.
翻訳後修飾	Cleavages by caspase-3, caspase-8 or -10 generate the two active subunits.
細胞内局在	Cytoplasm.

画像



Western blot - Anti-Caspase-6/CASP-6 antibody [EP1325Y] (ab52951)

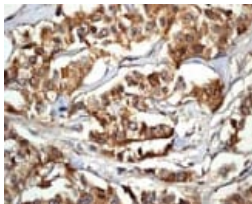
Anti-Caspase-6/CASP-6 antibody [EP1325Y] (ab52951) at 1/20000 dilution + MCF-7 cell lysate at 10 µg

Secondary

Goat anti-rabbit HRP conjugated at 1/2000 dilution

Predicted band size: 34 kDa

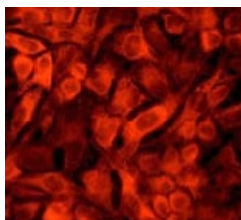
Observed band size: 34 kDa



Immunohistochemistry (Formalin/PFA-fixed paraffin-embedded sections) - Anti-Caspase-6/CASP-6 antibody [EP1325Y] (ab52951)

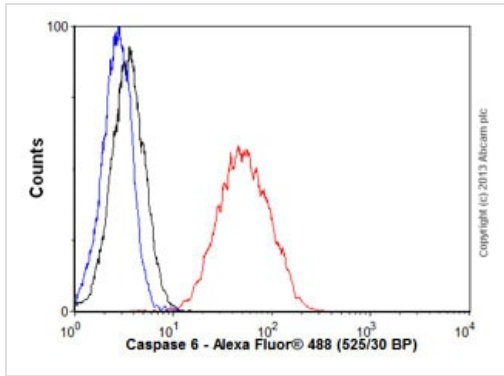
ab52951 at 1:100 dilution staining Caspase-6/CASP-6 in human breast carcinoma by Immunohistochemistry, Paraffin embedded tissue.

Perform heat mediated antigen retrieval with citrate buffer pH 6 before commencing with IHC staining protocol.



Immunocytochemistry/ Immunofluorescence - Anti-Caspase-6/CASP-6 antibody [EP1325Y] (ab52951)





ab52951 at 1:100 dilution staining Caspase-6/CASP-6 in HeLa cells by Immunofluorescence.



Flow Cytometry (Intracellular) - Anti-Caspase-6/CASP-6 antibody [EP1325Y] (ab52951)

Overlay histogram showing HeLa cells stained with ab52951 (red line). The cells were fixed with 80% methanol (5 min) and then permeabilized with 0.1% PBS-Tween for 20 min. The cells were then incubated in 1x PBS / 10% normal goat serum / 0.3M glycine to block non-specific protein-protein interactions followed by the antibody (ab52951, 1/1000 dilution) for 30 min at 22°C. The secondary antibody used was Alexa Fluor® 488 goat anti-rabbit IgG (H&L) ([ab150077](#)) at 1/2000 dilution for 30 min at 22°C. Isotype control antibody (black line) was rabbit IgG (monoclonal) (0.1µg/1x10⁶ cells) used under the same conditions. Unlabelled sample (blue line) was also used as a control. Acquisition of >5,000 events were collected using a 20mW Argon ion laser (488nm) and 525/30 bandpass filter. This antibody gave a positive signal in HeLa cells fixed with 4% paraformaldehyde (10 min)/permeabilized with 0.1% PBS-Tween for 20 min used under the same conditions.

Why choose a recombinant antibody?

 Research with confidence Consistent and reproducible results	 Long-term and scalable supply Recombinant technology
 Success from the first experiment Confirmed specificity	 Ethical standards compliant Animal-free production

Anti-Caspase-6/CASP-6 antibody [EP1325Y] (ab52951)

Please note: All products are "FOR RESEARCH USE ONLY. NOT FOR USE IN DIAGNOSTIC PROCEDURES"

Our Promise to you: Quality guaranteed and expert technical support

- Replacement or refund for products not performing as stated on the datasheet
- Valid for 12 months from date of delivery
- Response to your inquiry within 24 hours
- We provide support in Chinese, English, French, German, Japanese and Spanish
- Extensive multi-media technical resources to help you
- We investigate all quality concerns to ensure our products perform to the highest standards

If the product does not perform as described on this datasheet, we will offer a refund or replacement. For full details of the Abpromise, please visit <https://www.abcam.co.jp/abpromise> or contact our technical team.

Terms and conditions

- Guarantee only valid for products bought direct from Abcam or one of our authorized distributors