

Anti-Caspase-2 antibody [Y154] ab32021

KO 評価済 リコンビナント RabMAb

8 References 画像数 3

製品の概要

製品名	Anti-Caspase-2 antibody [Y154]
製品の詳細	Rabbit monoclonal [Y154] to Caspase-2
由来種	Rabbit
特異性	This antibody is specific for the pro form and the p18 cleaved form of Caspase-2.
アプリケーション	適用あり: WB
種交差性	交差種: Human
免疫原	Synthetic peptide within Human Caspase-2 aa 250-350 (C terminal). The exact sequence is proprietary. Database link: P42575
ポジティブ・コントロール	Jurkat cell lysate.
特記事項	<p>This product is a recombinant monoclonal antibody, which offers several advantages including:</p> <ul style="list-style-type: none">- High batch-to-batch consistency and reproducibility- Improved sensitivity and specificity- Long-term security of supply- Animal-free production <p>For more information see here.</p> <p>Our RabMAb[®] technology is a patented hybridoma-based technology for making rabbit monoclonal antibodies. For details on our patents, please refer to RabMAb[®] patents.</p> <p>Mouse, Rat: We have preliminary internal testing data to indicate this antibody may not react with these species. Please contact us for more information.</p>

製品の特性

製品の状態	Liquid
保存方法	Shipped at 4°C. Store at +4°C short term (1-2 weeks). Upon delivery aliquot. Store at -20°C. Avoid freeze / thaw cycle.
バッファー	pH: 7.20 Preservative: 0.01% Sodium azide Constituents: 49% PBS, 50% Glycerol (glycerin, glycerine), 0.05% BSA

精製度	Protein A purified
ポリ/モノ	モノクローナル
クローン名	Y154
アイソタイプ	IgG

アプリケーション

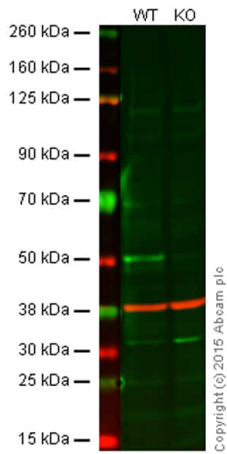
The Abpromise guarantee Abpromise保証は、次のテスト済みアプリケーションにおけるab32021の使用に適用されます
 アプリケーションノートには、推奨の開始希釈率がありますが、適切な希釈率につきましてはご確認ください。

アプリケーション	Abreviews	特記事項
WB		1/500. Detects a band of approximately 50 kDa (predicted molecular weight: 49 kDa). Detects bands of approximately 50 kDa (pro form) and 18 kDa (p18 cleaved form).

ターゲット情報

機能	Involved in the activation cascade of caspases responsible for apoptosis execution. Might function by either activating some proteins required for cell death or inactivating proteins necessary for cell survival.
組織特異性	Expressed at higher levels in the embryonic lung, liver and kidney than in the heart and brain. In adults, higher level expression is seen in the placenta, lung, kidney, and pancreas than in the heart, brain, liver and skeletal muscle.
配列類似性	Belongs to the peptidase C14A family. Contains 1 CARD domain.
翻訳後修飾	The mature protease can process its own propeptide, but not that of other caspases.

画像



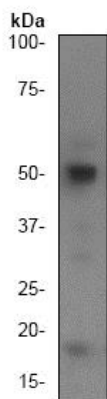
Western blot - Anti-Caspase-2 antibody [Y154]
(ab32021)

Lane 1: Wild-type HAP1 cell lysate (20 µg)

Lane 2: Caspase 2 knockout HAP1 cell lysate (20 µg)

Lanes 1 and 2: Merged signal (red and green). Green - **ab182738** observed at 51 kDa. Red - loading control, **ab8226**, observed at 42 kDa.

ab32021 was shown to recognize caspase 2 when caspase 2 knockout samples were used, along with additional cross-reactive bands. Wild-type and caspase 2 knockout samples were subjected to SDS-PAGE. ab32021 and **ab8226** (loading control to beta actin) were diluted 1/50 and 1/1000 respectively and incubated overnight at 4°C. Blots were developed with Goat anti-Rabbit IgG H&L (IRDye® 800CW) preadsorbed **ab216773** and Goat anti-Mouse IgG H&L (IRDye® 680RD) preadsorbed **ab216776** secondary antibodies at 1/10000 dilution for 1 h at room temperature before imaging.



Western blot - Anti-Caspase-2 antibody [Y154]
(ab32021)





Anti-Caspase-2 antibody [Y154] (ab32021) at 1/500 dilution + Jurkat (Human T cell leukemia cell line from peripheral blood) whole cell lysate

Predicted band size: 49 kDa

Observed band size: 50 kDa

Additional bands at: 18 kDa (possible cleavage fragment)

Why choose a recombinant antibody?

 <p>Research with confidence Consistent and reproducible results</p>	 <p>Long-term and scalable supply Recombinant technology</p>
 <p>Success from the first experiment Confirmed specificity</p>	 <p>Ethical standards compliant Animal-free production</p>

Anti-Caspase-2 antibody [Y154] (ab32021)

Please note: All products are "FOR RESEARCH USE ONLY. NOT FOR USE IN DIAGNOSTIC PROCEDURES"

Our Abpromise to you: Quality guaranteed and expert technical support

- Replacement or refund for products not performing as stated on the datasheet
- Valid for 12 months from date of delivery
- Response to your inquiry within 24 hours
- We provide support in Chinese, English, French, German, Japanese and Spanish
- Extensive multi-media technical resources to help you
- We investigate all quality concerns to ensure our products perform to the highest standards

If the product does not perform as described on this datasheet, we will offer a refund or replacement. For full details of the Abpromise, please visit <https://www.abcam.co.jp/abpromise> or contact our technical team.

Terms and conditions

- Guarantee only valid for products bought direct from Abcam or one of our authorized distributors