

Anti-Caspase-14 antibody ab45415

★★★★★ [1 Abreviews](#) [1 References](#) [画像数 1](#)

製品の概要

| | |
|----------|---|
| 製品名 | Anti-Caspase-14 antibody |
| 製品の詳細 | Rabbit polyclonal to Caspase-14 |
| 由来種 | Rabbit |
| アプリケーション | 適用あり: WB |
| 種交差性 | 交差種: Human |
| 免疫原 | Synthetic peptide corresponding to Human Caspase-14 (C terminal). Database link: P31944 (Peptide available as ab72738) |
| 特記事項 | <p>The Life Science industry has been in the grips of a reproducibility crisis for a number of years. Abcam is leading the way in addressing this with our range of recombinant monoclonal antibodies and knockout edited cell lines for gold-standard validation. Please check that this product meets your needs before purchasing.</p> <p>If you have any questions, special requirements or concerns, please send us an inquiry and/or contact our Support team ahead of purchase. Recommended alternatives for this product can be found below, along with publications, customer reviews and Q&As</p> |

製品の特性

| | |
|-----------|---|
| 製品の状態 | Liquid |
| 保存方法 | Shipped at 4°C. Store at +4°C short term (1-2 weeks). Upon delivery aliquot. Store at -20°C. Avoid freeze / thaw cycle. |
| バッファー | pH: 7.2 Preservative: 0.02% Sodium azide Constituent: PBS |
| 精製度 | Protein A purified |
| 特記事項 (精製) | Caspase-14 Antibody is affinity chromatography purified via peptide column. |
| ポリ/モノ | ポリクローナル |
| アイソタイプ | IgG |

アプリケーション

The Abpromise guarantee

Abpromise保証は、次のテスト済みアプリケーションにおけるab45415の使用に適用されます

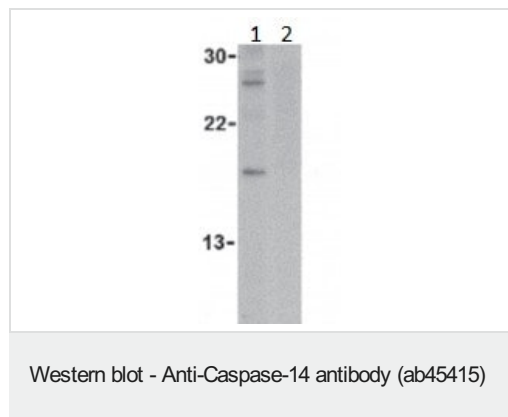
アプリケーションノートには、推奨の開始希釈率がありますが、適切な希釈率につきましてはご検討ください。

| アプリケーション | Abreviews | 特記事項 |
|----------|-----------|--|
| WB | ★★★★★ (1) | Use a concentration of 1 µg/ml. Detects a band of approximately 27 kDa (predicted molecular weight: 27 kDa). |

ターゲット情報

| | |
|-------|---|
| 機能 | Believed to be a non-apoptotic caspase which is involved in epidermal differentiation. Seems to play a role in keratinocyte differentiation and cornification. Probably regulates maturation of the epidermis by proteolytically processing filaggrin. |
| 組織特異性 | Expressed in keratinocytes of adult skin suprabasal layers (from spinous layers to the stratum granulosum and stratum corneum) (at protein level). Expressed in keratinocytes of hair shaft and sebaceous glands (at protein level). In psoriatic skin only expressed at very low levels. |
| 配列類似性 | Belongs to the peptidase C14A family. |
| 細胞内局在 | Cytoplasm. Nucleus. |

画像



All lanes : Anti-Caspase-14 antibody (ab45415) at 1 µg/ml

Lane 1 : Jurkat cell lysate

Lane 2 : Jurkat cell lysate + blocking peptide

Secondary

All lanes : anti-rabbit IgG

Predicted band size: 27 kDa

Please note: All products are "FOR RESEARCH USE ONLY. NOT FOR USE IN DIAGNOSTIC PROCEDURES"

Our Abpromise to you: Quality guaranteed and expert technical support

- Replacement or refund for products not performing as stated on the datasheet
- Valid for 12 months from date of delivery
- Response to your inquiry within 24 hours
- We provide support in Chinese, English, French, German, Japanese and Spanish
- Extensive multi-media technical resources to help you
- We investigate all quality concerns to ensure our products perform to the highest standards

If the product does not perform as described on this datasheet, we will offer a refund or replacement. For full details of the Abpromise, please visit <https://www.abcam.co.jp/abpromise> or contact our technical team.

Terms and conditions

- Guarantee only valid for products bought direct from Abcam or one of our authorized distributors