



Anti-Caspase-10/CASP-10 antibody ab2012

★★★★★ [1 Abreviews](#) [3 References](#) [画像数 2](#)

製品の概要

製品名	Anti-Caspase-10/CASP-10 antibody
製品の詳細	Rabbit polyclonal to Caspase-10/CASP-10
由来種	Rabbit
アプリケーション	適用あり: ICC, WB
種交差性	交差種: Human
免疫原	Synthetic peptide corresponding to Human Caspase-10/CASP-10 aa 505-521 (C terminal). Sequence: ISAQTPRPPMRRWSSVS Database link: Q92851 (Peptide available as ab8377)  Run BLAST with  Run BLAST with
ポジティブ・コントロール	WB: HeLa whole cell lysate. ICC: HeLa cells.
特記事項	<p>The Life Science industry has been in the grips of a reproducibility crisis for a number of years. Abcam is leading the way in addressing this with our range of recombinant monoclonal antibodies and knockout edited cell lines for gold-standard validation. Please check that this product meets your needs before purchasing.</p> <p>If you have any questions, special requirements or concerns, please send us an inquiry and/or contact our Support team ahead of purchase. Recommended alternatives for this product can be found below, along with publications, customer reviews and Q&As</p>

製品の特性

製品の状態	Liquid
保存方法	Shipped at 4°C. Store at +4°C short term (1-2 weeks). Upon delivery aliquot. Store at -20°C. Avoid freeze / thaw cycle.
バッファー	pH: 7.2 Preservative: 0.02% Sodium azide
精製度	DEAE-Chromatography
ポリ/モノ	ポリクローナル
アイソタイプ	IgG

アプリケーション

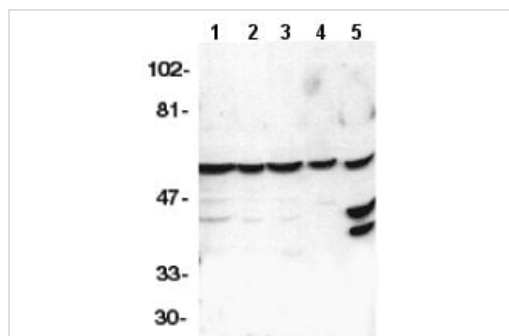
The Abpromise guarantee **Abpromise保証は、次のテスト済みアプリケーションにおけるab2012の使用に適用されます**
アプリケーションノートには、推奨の開始希釈率がありますが、適切な希釈率につきましてはご確認ください。

アプリケーション	Abreviews	特記事項
ICC		Use at an assay dependent concentration.
WB		1/500 - 1/1000. Detects a band of approximately 59 kDa (predicted molecular weight: 59 kDa).

ターゲット情報

機能	<p>Involved in the activation cascade of caspases responsible for apoptosis execution. Recruited to both Fas- and TNFR-1 receptors in a FADD dependent manner. May participate in the granzyme B apoptotic pathways. Cleaves and activates caspase-3, -4, -6, -7, -8, and -9. Hydrolyzes the small- molecule substrates, Tyr-Val-Ala-Asp-AMC and Asp-Glu-Val-Asp-AMC.</p> <p>Isoform C is proteolytically inactive.</p>
組織特異性	Detectable in most tissues. Lowest expression is seen in brain, kidney, prostate, testis and colon.
関連疾患	<p>Defects in CASP10 are the cause of autoimmune lymphoproliferative syndrome type 2A (ALPS2A) [MIM:603909]. ALPS2 is characterized by abnormal lymphocyte and dendritic cell homeostasis and immune regulatory defects.</p> <p>Defects in CASP10 are a cause of familial non-Hodgkin lymphoma (NHL) [MIM:605027]. NHL is a cancer that starts in cells of the lymph system, which is part of the body's immune system. NHLs can occur at any age and are often marked by enlarged lymph nodes, fever and weight loss.</p> <p>Defects in CASP10 are a cause of gastric cancer (GASC) [MIM:613659]. A malignant disease which starts in the stomach, can spread to the esophagus or the small intestine, and can extend through the stomach wall to nearby lymph nodes and organs. It also can metastasize to other parts of the body. The term gastric cancer or gastric carcinoma refers to adenocarcinoma of the stomach that accounts for most of all gastric malignant tumors. Two main histologic types are recognized, diffuse type and intestinal type carcinomas. Diffuse tumors are poorly differentiated infiltrating lesions resulting in thickening of the stomach. In contrast, intestinal tumors are usually exophytic, often ulcerating, and associated with intestinal metaplasia of the stomach, most often observed in sporadic disease.</p>
配列類似性	<p>Belongs to the peptidase C14A family.</p> <p>Contains 2 DED (death effector) domains.</p>
翻訳後修飾	<p>Cleavage by granzyme B and autocatalytic activity generate the two active subunits.</p> <p>Phosphorylated upon DNA damage, probably by ATM or ATR.</p>

画像



Western blot - Anti-Caspase-10/CASP-10 antibody (ab2012)

All lanes : Anti-Caspase-10/CASP-10 antibody (ab2012) at 1/1000 dilution

Lane 1 : HeLa whole cell lysate

Lane 2 : Jurkat whole cell lysate

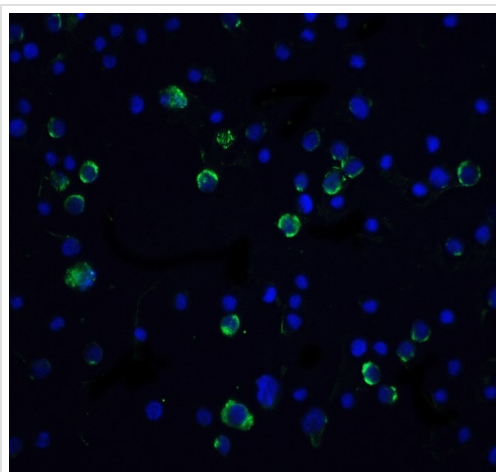
Lane 3 : A431 whole cell lysate

Lane 4 : K562 whole cell lysate

Lane 5 : NIH3T3 whole cell lysate

Predicted band size: 59 kDa

Observed band size: 59 kDa



Immunocytochemistry - Anti-Caspase-10/CASP-10 antibody (ab2012)

Immunocytochemistry/Immunofluorescence of HeLa cells labeling Caspase-10/CASP-10 with Anti-Caspase-10/CASP-10 antibody (ab2012) at 5µg/ml.

Please note: All products are "FOR RESEARCH USE ONLY. NOT FOR USE IN DIAGNOSTIC PROCEDURES"

Our Abpromise to you: Quality guaranteed and expert technical support

- Replacement or refund for products not performing as stated on the datasheet
- Valid for 12 months from date of delivery
- Response to your inquiry within 24 hours
- We provide support in Chinese, English, French, German, Japanese and Spanish
- Extensive multi-media technical resources to help you
- We investigate all quality concerns to ensure our products perform to the highest standards

If the product does not perform as described on this datasheet, we will offer a refund or replacement. For full details of the Abpromise, please visit <https://www.abcam.co.jp/abpromise> or contact our technical team.

Terms and conditions

- Guarantee only valid for products bought direct from Abcam or one of our authorized distributors