

# Anti-Casein Kinase 1 gamma 2 antibody [EPR20918-13] - BSA and Azide free ab270040

リコンビナント **RabMAb**

画像数 4

## 製品の概要

製品名	Anti-Casein Kinase 1 gamma 2 antibody [EPR20918-13] - BSA and Azide free
製品の詳細	Rabbit monoclonal [EPR20918-13] to Casein Kinase 1 gamma 2 - BSA and Azide free
由来種	Rabbit
アプリケーション	<b>適用あり:</b> Flow Cyt (Intra), IP, WB <b>適用なし:</b> ICC/IF, IHC-Fr or IHC-P
種交差性	<b>交差種:</b> Mouse, Rat, Human
免疫原	Synthetic peptide. This information is proprietary to Abcam and/or its suppliers.
ポジティブ・コントロール	WB: HEK-293T transfected with human Casein Kinase 1 gamma 2; HEK-293T transfected with mouse Casein Kinase 1 gamma 2; Mouse and rat testis lysate. Flow Cyt (intra): MEF and HEK-293T cells. IP: Mouse testis lysate.
特記事項	<p>ab270040 is the carrier-free version of <a href="#">ab238121</a>.</p> <p>Our <b>carrier-free</b> antibodies are typically supplied in a PBS-only formulation, purified and free of BSA, sodium azide and glycerol. The carrier-free buffer and high concentration allow for increased conjugation efficiency.</p> <p>This conjugation-ready format is designed for use with fluorochromes, metal isotopes, oligonucleotides, and enzymes, which makes them ideal for antibody labelling, functional and cell-based assays, flow-based assays (e.g. mass cytometry) and Multiplex Imaging applications.</p> <p>Use our <b>conjugation kits</b> for antibody conjugates that are ready-to-use in as little as 20 minutes with &lt;1 minute hands-on-time and 100% antibody recovery: available for fluorescent dyes, HRP, biotin and gold.</p> <p>This product is compatible with the Maxpar<sup>®</sup> Antibody Labeling Kit from Fluidigm, without the need for antibody preparation. Maxpar<sup>®</sup> is a trademark of Fluidigm Canada Inc.</p> <p>This product is a recombinant monoclonal antibody, which offers several advantages including:</p> <ul style="list-style-type: none"> <li>- High batch-to-batch consistency and reproducibility</li> <li>- Improved sensitivity and specificity</li> <li>- Long-term security of supply</li> <li>- Animal-free production</li> </ul> <p>For more information <a href="#">see here</a>.</p> <p>Our RabMAb<sup>®</sup> technology is a patented hybridoma-based technology for making rabbit</p>

monoclonal antibodies. For details on our patents, please refer to [RabMAb® patents](#).

## 製品の特性

製品の状態	Liquid
保存方法	Shipped at 4°C. Store at +4°C. Do Not Freeze.
バッファー	pH: 7.2 Constituent: PBS
キャリア・フリー	はい
精製度	Protein A purified
ポリ/モノ	モノクローナル
クローン名	EPR20918-13
アイソタイプ	IgG

## アプリケーション

**The Abpromise guarantee**      **Abpromise保証は、**次のテスト済みアプリケーションにおけるab270040の使用に適用されます  
アプリケーションノートには、推奨の開始希釈率がありますが、適切な希釈率につきましてはご検討ください。

アプリケーション	Abreviews	特記事項
Flow Cyt (Intra)		Use at an assay dependent concentration.
IP		Use at an assay dependent concentration.
WB		Use at an assay dependent concentration. Detects a band of approximately 50 kDa (predicted molecular weight: 47 kDa).

**追加情報**      Is unsuitable for ICC/IF, IHC-Fr or IHC-P.

## ターゲット情報

機能	Serine/threonine-protein kinase. Casein kinases are operationally defined by their preferential utilization of acidic proteins such as caseins as substrates. It can phosphorylate a large number of proteins. Participates in Wnt signaling (By similarity). Phosphorylates COL4A3BP/CERT, MTA1 and SMAD3. Involved in brain development and vesicular trafficking and neurotransmitter releasing from small synaptic vesicles. Regulates fast synaptic transmission mediated by glutamate. SMAD3 phosphorylation promotes its ligand-dependent ubiquitination and subsequent proteasome degradation, thus inhibiting SMAD3-mediated TGF-beta responses. Hyperphosphorylation of the serine-repeat motif of COL4A3BP/CERT leads to its inactivation by dissociation from the Golgi complex, thus down-regulating ER-to-Golgi transport of ceramide and sphingomyelin synthesis.
組織特異性	Testis.
配列類似性	Belongs to the protein kinase superfamily. CK1 Ser/Thr protein kinase family. Casein kinase I subfamily. Contains 1 protein kinase domain.

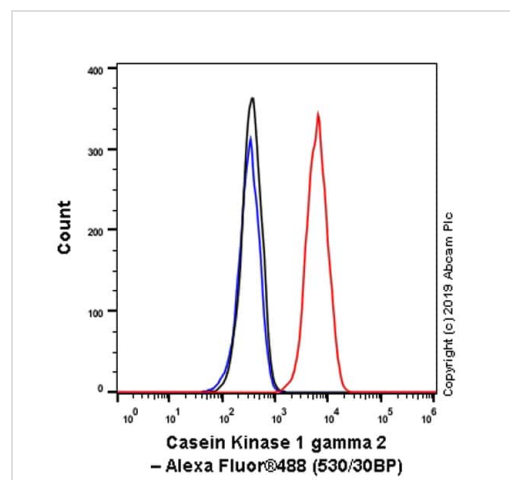
翻訳後修飾

Autophosphorylated.

細胞内局在

Cytoplasm.

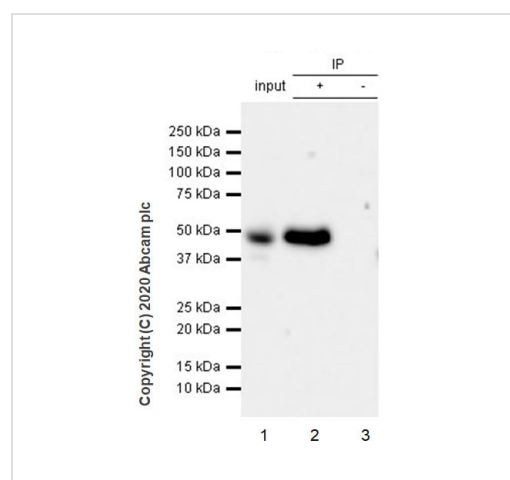
## 画像



Flow Cytometry (Intracellular) - Anti-Casein Kinase 1 gamma 2 antibody [EPR20918-13] - BSA and Azide free (ab270040)

Intracellular flow cytometric analysis of 4% paraformaldehyde fixed, 90% methanol-permeabilized MEF (Mouse embryonic fibroblast (immortalized)) cells labelling Casein Kinase 1 gamma 2 with **ab238121** at 1/500 dilution (Red) compared with a Rabbit monoclonal IgG (**ab172730**) (Black) isotype control and an unlabelled control (cells without incubation with primary antibody and secondary antibody) (Blue). A Goat anti rabbit IgG (Alexa Fluor®488, **ab150077**) at 1/2000 dilution was used as the secondary antibody.

This data was developed using the same antibody clone in a different buffer formulation containing PBS, BSA, glycerol, and sodium azide (**ab238121**).



Immunoprecipitation - Anti-Casein Kinase 1 gamma 2 antibody [EPR20918-13] - BSA and Azide free (ab270040)

Casein Kinase 1 gamma 2 was immunoprecipitated from 0.35 mg mouse testis tissue lysate with **ab238121** at 1/30 dilution (2ug in 0.35mg lysates). Western blot was performed on the immunoprecipitate using **ab238121** at 1/1000 dilution. VeriBlot for IP Detection Reagent (HRP)(**ab131366**) was used at 1/5000 dilution.

Lane 1: Mouse testis tissue lysate 10 ug

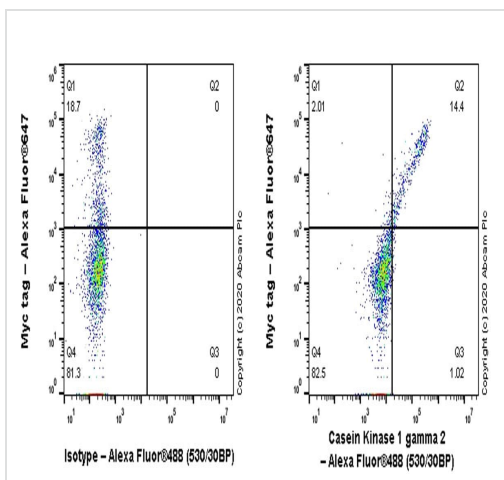
Lane 2: **ab238121** IP in mouse testis tissue lysate

Lane 3: Rabbit monoclonal IgG (**ab172730**) instead of **ab238121** in mouse testis tissue lysate

Blocking and dilution buffer and concentration: 5% NFDM/TBST.

Exposure time: 32 seconds.

This data was developed using the same antibody clone in a different buffer formulation containing PBS, BSA, glycerol, and sodium azide (**ab238121**).



Flow Cytometry (Intracellular) - Anti-Casein Kinase 1 gamma 2 antibody [EPR20918-13] - BSA and Azide free (ab270040)

Intracellular flow cytometric analysis of 4% paraformaldehyde fixed, 90% methanol-permeabilized HEK-293T (Human embryonic kidney epithelial cell) cells (transfected with myc-tagged Casein Kinase 1 gamma 2 construct) labelling Casein Kinase 1 gamma 2 with **ab238121** at 1/500 dilution (Right) compared with a Rabbit monoclonal IgG (**ab172730**) isotype control (Left).

A Goat anti rabbit IgG (Alexa Fluor®488, **ab150077**) at 1/2000 dilution was used as the secondary antibody.

This data was developed using the same antibody clone in a different buffer formulation containing PBS, BSA, glycerol, and sodium azide (**ab238121**).

### Why choose a recombinant antibody?



Research with confidence  
Consistent and reproducible results



Long-term and scalable supply  
Recombinant technology



Success from the first experiment  
Confirmed specificity



Ethical standards compliant  
Animal-free production

Anti-Casein Kinase 1 gamma 2 antibody  
[EPR20918-13] - BSA and Azide free (ab270040)

**Please note:** All products are "FOR RESEARCH USE ONLY. NOT FOR USE IN DIAGNOSTIC PROCEDURES"

### Our Abpromise to you: Quality guaranteed and expert technical support

- Replacement or refund for products not performing as stated on the datasheet
- Valid for 12 months from date of delivery
- Response to your inquiry within 24 hours
- We provide support in Chinese, English, French, German, Japanese and Spanish

- Extensive multi-media technical resources to help you
- We investigate all quality concerns to ensure our products perform to the highest standards

If the product does not perform as described on this datasheet, we will offer a refund or replacement. For full details of the Abpromise, please visit <https://www.abcam.co.jp/abpromise> or contact our technical team.

#### **Terms and conditions**

---

- Guarantee only valid for products bought direct from Abcam or one of our authorized distributors