




Anti-Casein Kinase 1 delta/CSNK1D antibody ab48031

★★★★★ [1 Abreviews](#) [3 References](#) [画像数 2](#)

製品の概要

製品名	Anti-Casein Kinase 1 delta/CSNK1D antibody
製品の詳細	Goat polyclonal to Casein Kinase 1 delta/CSNK1D
由来種	Goat
特異性	This antibody is expected to recognise both reported isoforms of Casein Kinase 1 delta/CSNK1D.
アプリケーション	適用あり: WB, ICC/IF
種交差性	交差種: Human 交差が予測される動物種: Mouse, Rat, Cow, Dog, Chimpanzee, Macaque monkey 
免疫原	Synthetic peptide corresponding to Human Casein Kinase 1 delta/CSNK1D aa 310-324 (internal sequence). Sequence: DREERLRHSRNPATR Database link: P48730 <div>  Run BLAST with  Run BLAST with </div>
ポジティブ・コントロール	WB: HEK 293 cell lysate. ICC/UF U251 cells.
特記事項	<p>The Life Science industry has been in the grips of a reproducibility crisis for a number of years. Abcam is leading the way in addressing this with our range of recombinant monoclonal antibodies and knockout edited cell lines for gold-standard validation. Please check that this product meets your needs before purchasing.</p> <p>If you have any questions, special requirements or concerns, please send us an inquiry and/or contact our Support team ahead of purchase. Recommended alternatives for this product can be found below, along with publications, customer reviews and Q&As</p>

製品の特性

製品の状態	Liquid
保存方法	Shipped at 4°C. Upon delivery aliquot and store at -20°C. Avoid freeze / thaw cycles.
バッファー	pH: 7.30 Preservative: 0.02% Sodium azide Constituents: Tris buffered saline, 0.5% BSA

精製度	Immunogen affinity purified
特記事項 (精製)	Purified from goat serum by ammonium sulphate precipitation followed by antigen affinity chromatography using the immunizing peptide.
ポリ/モノ	ポリクローナル
アイソタイプ	IgG

アプリケーション

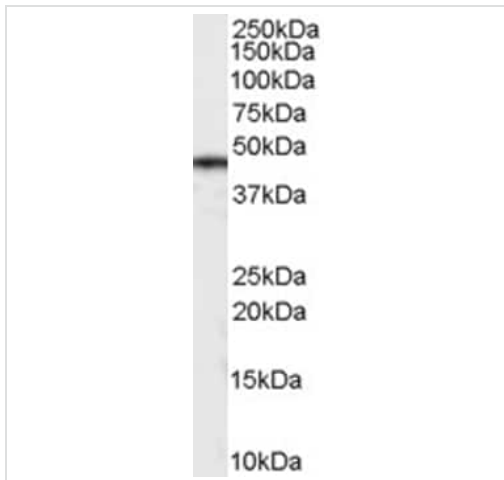
The Abpromise guarantee Abpromise保証は、次のテスト済みアプリケーションにおけるab48031の使用に適用されます
 アプリケーションノートには、推奨の開始希釈率がありますが、適切な希釈率につきましてはご検討ください。

アプリケーション	Abreviews	特記事項
WB	★★★★★ (1)	Use a concentration of 0.3 - 1 µg/ml. Detects a band of approximately 48 kDa (predicted molecular weight: 47 kDa). 1 hour primary incubation is recommended for this product.
ICC/IF		Use a concentration of 10 µg/ml.

ターゲット情報

機能	Casein kinases are operationally defined by their preferential utilization of acidic proteins such as caseins as substrates. It can phosphorylate a large number of proteins. Participates in Wnt signaling. Central component of the circadian clock. May act as a negative regulator of circadian rhythmicity by phosphorylating PER1 and PER2. Retains PER1 in the cytoplasm.
組織特異性	Expressed in all tissues examined, including brain, heart, lung, liver, pancreas, kidney, placenta and skeletal muscle. In blood, highly expressed in hemopoietic cells and mature granulocytes. Also found in monocytes and lymphocytes.
関連疾患	Defects in CSNK1D are a cause of familial advanced sleep-phase syndrome (FASPS) [MIM:604348]. FASPS is characterized by very early sleep onset and offset. Individuals are 'morning larks' with a 4 hours advance of the sleep, temperature and melatonin rhythms.
配列類似性	Belongs to the protein kinase superfamily. CK1 Ser/Thr protein kinase family. Casein kinase I subfamily. Contains 1 protein kinase domain.
翻訳後修飾	Autophosphorylated on serine and threonine residues.
細胞内局在	Cytoplasm. Nucleus.

画像



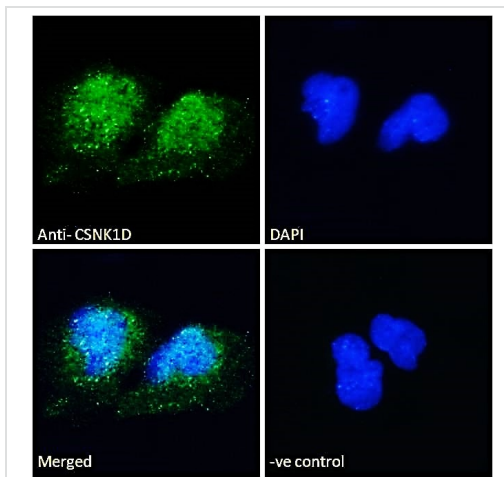
Western blot - Anti-Casein Kinase 1 delta/CSNK1D antibody (ab48031)

Anti-Casein Kinase 1 delta/CSNK1D antibody (ab48031) at 0.3 µg/ml + HEK 293 cell lysate in RIPA buffer at 35 µg

Predicted band size: 47 kDa

Observed band size: 48 kDa

Primary incubation was 1 hour. Detected using chemiluminescence.



Immunocytochemistry/ Immunofluorescence - Anti-Casein Kinase 1 delta/CSNK1D antibody (ab48031)

Immunocytochemistry/Immunofluorescence analysis of U251 cells labelling Casein Kinase 1 delta/CSNK1D with ab48031 at 10 µg/ml. Cells were paraformaldehyde fixed and permeabilized with 0.15% triton. Primary antibody incubation was for 1 hour followed by incubation with an Alexa Fluor® 488-conjugated secondary antibody at 2 µg/ml. DAPI nuclear counterstain was used.

Negative control: Unimmunized goat IgG (10 µg/ml) followed by an Alexa Fluor® 488-conjugated secondary antibody (2 µg/ml).

Please note: All products are "FOR RESEARCH USE ONLY. NOT FOR USE IN DIAGNOSTIC PROCEDURES"

Our Abpromise to you: Quality guaranteed and expert technical support

- Replacement or refund for products not performing as stated on the datasheet
- Valid for 12 months from date of delivery
- Response to your inquiry within 24 hours
- We provide support in Chinese, English, French, German, Japanese and Spanish

- Extensive multi-media technical resources to help you
- We investigate all quality concerns to ensure our products perform to the highest standards

If the product does not perform as described on this datasheet, we will offer a refund or replacement. For full details of the Abpromise, please visit <https://www.abcam.co.jp/abpromise> or contact our technical team.

Terms and conditions

- Guarantee only valid for products bought direct from Abcam or one of our authorized distributors