

### Anti-CARD15/NOD2 antibody [2D9] ab31488

★★★★☆ **3 Abreviews**   **12 References**   画像数 3

#### 製品の概要

製品名	Anti-CARD15/NOD2 antibody [2D9]
製品の詳細	Mouse monoclonal [2D9] to CARD15/NOD2
由来種	Mouse
アプリケーション	<b>適用あり:</b> WB, IHC-P
種交差性	<b>交差種:</b> Human
免疫原	Recombinant fragment corresponding to Human CARD15/NOD2 aa 1-350.
ポジティブ・コントロール	This antibody gave a positive signal when tested against HEK293 overexpressing CARD15/NOD2 protein. It also gave a positive signal in FFPE human tonsil tissue sections.
特記事項	<p>This antibody clone is manufactured by Abcam. If you require a custom buffer formulation or conjugation for your experiments, please contact <a href="mailto:orders@abcam.com">orders@abcam.com</a>.</p> <p>The Life Science industry has been in the grips of a reproducibility crisis for a number of years. Abcam is leading the way in addressing this with our range of recombinant monoclonal antibodies and knockout edited cell lines for gold-standard validation. Please check that this product meets your needs before purchasing.</p> <p>If you have any questions, special requirements or concerns, please send us an inquiry and/or contact our Support team ahead of purchase. Recommended alternatives for this product can be found below, along with publications, customer reviews and Q&amp;As</p>

#### 製品の特性

製品の状態	Liquid
保存方法	Shipped at 4°C. Upon delivery aliquot and store at -20°C. Avoid freeze / thaw cycles.
バッファー	<p>pH: 7.40</p> <p>Preservative: 0.02% Sodium azide</p> <p>Constituent: PBS</p>
精製度	Protein G purified
ポリ/モノ	モノクローナル
クローン名	2D9
アイソタイプ	IgG1
軽鎖の種類	kappa

## アプリケーション

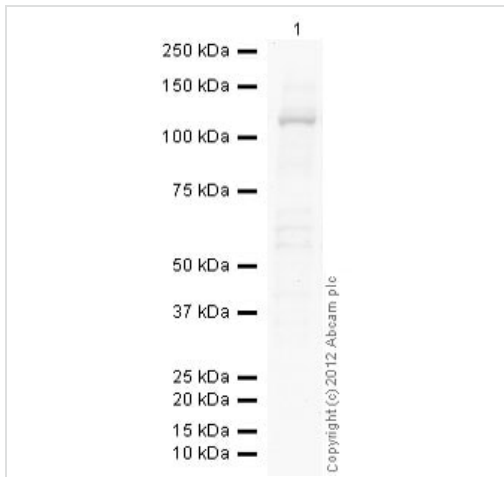
**The Abpromise guarantee**      **Abpromise保証は、次のテスト済みアプリケーションにおけるab31488の使用に適用されます**  
アプリケーションノートには、推奨の開始希釈率がありますが、適切な希釈率につきましてはご確認ください。

アプリケーション	Abreviews	特記事項
WB	★★★★★ (2)	Use a concentration of 2 µg/ml. Detects a band of approximately 115 kDa (predicted molecular weight: 115 kDa).
IHC-P	★★★★★ (1)	Use at an assay dependent concentration.

## ターゲット情報

機能	Induces NF-kappa-B via RICK (CARDIAK, RIP2) and IKK-gamma. Confers responsiveness to intracellular bacterial lipopolysaccharides (LPS).
組織特異性	Monocytes-specific.
関連疾患	<p>Defects in NOD2 are the cause of Blau syndrome (BS) [MIM:186580]. BS is a rare autosomal dominant disorder characterized by early-onset granulomatous arthritis, uveitis and skin rash. Defects in NOD2 are a cause of susceptibility to inflammatory bowel disease type 1 (IBD1) [MIM:266600]. IBD1 is a chronic, relapsing inflammation of the gastrointestinal tract with a complex etiology. It is subdivided into Crohn disease and ulcerative colitis phenotypes. Crohn disease may affect any part of the gastrointestinal tract from the mouth to the anus, but most frequently it involves the terminal ileum and colon. Bowel inflammation is transmural and discontinuous; it may contain granulomas or be associated with intestinal or perianal fistulas. In contrast, in ulcerative colitis, the inflammation is continuous and limited to rectal and colonic mucosal layers; fistulas and granulomas are not observed. Both diseases include extraintestinal inflammation of the skin, eyes, or joints.</p> <p>Defects in NOD2 are the cause of sarcoidosis early-onset (EOS) [MIM:609464]. EOS is a form of sarcoidosis manifesting in children younger than 4 years of age. Sarcoidosis is an idiopathic, systemic, inflammatory disease characterized by the formation of immune granulomas in involved organs. Granulomas predominantly invade the lungs and the lymphatic system, but also skin, liver, spleen, eyes and other organs may be involved. Early-onset sarcoidosis is quite rare and has a distinct triad of skin, joint and eye disorders, without apparent pulmonary involvement. Compared with an asymptomatic and sometimes naturally disappearing course of the disease in older children, early-onset sarcoidosis is progressive and in many cases causes severe complications, such as blindness, joint destruction and visceral involvement.</p>
配列類似性	<p>Contains 2 CARD domains.</p> <p>Contains 9 LRR (leucine-rich) repeats.</p> <p>Contains 1 NACHT domain.</p>
細胞内局在	Cytoplasm.

## 画像



Western blot - Anti-CARD15/NOD2 antibody [2D9] (ab31488)

Anti-CARD15/NOD2 antibody [2D9] (ab31488) at 2 µg/ml + HEK 293 overexpressing CARD15/NOD2 at 20 µg

### Secondary

Goat Anti-Mouse IgG H&L (HRP) preadsorbed ([ab97040](#)) at 1/5000 dilution

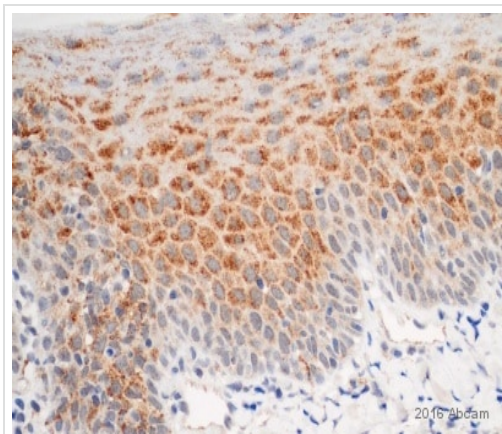
Developed using the ECL technique.

Performed under reducing conditions.

**Predicted band size:** 115 kDa

**Observed band size:** 115 kDa

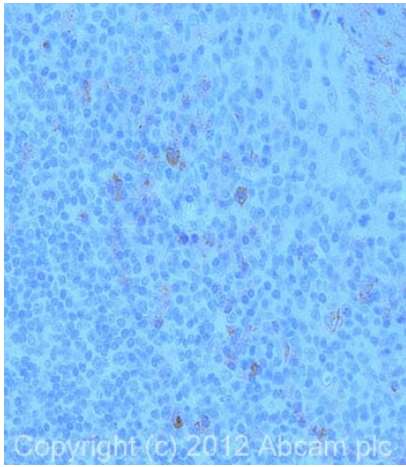
**Exposure time:** 150 seconds



Immunohistochemistry (Formalin/PFA-fixed paraffin-embedded sections) - Anti-CARD15/NOD2 antibody [2D9] (ab31488)

This image is courtesy of an anonymous Abreview.

ab31488 staining CARD15/NOD2 in human tonsil epithelium tissue section by Immunohistochemistry (IHC-P - paraformaldehyde-fixed, paraffin-embedded sections). Tissue was fixed with formaldehyde and blocked with 3% H<sub>2</sub>O<sub>2</sub> for 10 minutes at 25°C; antigen retrieval was by heat mediation in citrate buffer pH 6.0 for 20 minutes. Samples were incubated with primary antibody (1/150) for 20 minutes at 25°C. An undiluted HRP polymer-conjugated Goat anti-mouse IgG polyclonal was used as the secondary antibody.



Immunohistochemistry (Formalin/PFA-fixed paraffin-embedded sections) - Anti-CARD15/NOD2 antibody [2D9] (ab31488)

IHC image of CARD15/NOD2 staining in human tonsil formalin fixed paraffin embedded tissue section, performed on a Leica Bond™ system using the standard protocol F. The section was pre-treated using heat mediated antigen retrieval with sodium citrate buffer (pH6, epitope retrieval solution 1) for 20 mins. The section was then incubated with ab31488, 10µg/ml, for 15 mins at room temperature and detected using an HRP conjugated compact polymer system. DAB was used as the chromogen. The section was then counterstained with haematoxylin and mounted with DPX.

For other IHC staining systems (automated and non-automated) customers should optimize variable parameters such as antigen retrieval conditions, primary antibody concentration and antibody incubation times.

**Please note:** All products are "FOR RESEARCH USE ONLY. NOT FOR USE IN DIAGNOSTIC PROCEDURES"

### Our Abpromise to you: Quality guaranteed and expert technical support

---

- Replacement or refund for products not performing as stated on the datasheet
- Valid for 12 months from date of delivery
- Response to your inquiry within 24 hours
- We provide support in Chinese, English, French, German, Japanese and Spanish
- Extensive multi-media technical resources to help you
- We investigate all quality concerns to ensure our products perform to the highest standards

If the product does not perform as described on this datasheet, we will offer a refund or replacement. For full details of the Abpromise, please visit <https://www.abcam.co.jp/abpromise> or contact our technical team.

### Terms and conditions

---

- Guarantee only valid for products bought direct from Abcam or one of our authorized distributors