


Anti-Cannabinoid Receptor I antibody ab3558

[1 Abreviews](#) [5 References](#) [画像数 1](#)

製品の概要

製品名	Anti-Cannabinoid Receptor I antibody
製品の詳細	Rabbit polyclonal to Cannabinoid Receptor I
由来種	Rabbit
特異性	Detects CB1 from Human and Rat tissues as well as transfected Rat CB1.
アプリケーション	適用あり: IP, ICC/IF, IHC-Fr, IHC-P, Flow Cyt, WB
種交差性	交差種: Mouse, Rat, Rabbit, Human, Ferret 交差が予測される動物種: Cat, Chimpanzee, Rhesus monkey 
免疫原	Recombinant fragment within Human Cannabinoid Receptor I aa 1-100 (N terminal). The exact immunogen sequence used to generate this antibody is proprietary information. If additional detail on the immunogen is needed to determine the suitability of the antibody for your needs, please <u>contact</u> our Scientific Support team to discuss your requirements.
特記事項	<p>The Life Science industry has been in the grips of a reproducibility crisis for a number of years. Abcam is leading the way in addressing this with our range of recombinant monoclonal antibodies and knockout edited cell lines for gold-standard validation. Please check that this product meets your needs before purchasing.</p> <p>If you have any questions, special requirements or concerns, please send us an inquiry and/or contact our Support team ahead of purchase. Recommended alternatives for this product can be found below, along with publications, customer reviews and Q&As</p>

製品の特性

製品の状態	Liquid
保存方法	Shipped at 4°C. Store at +4°C short term (1-2 weeks). Upon delivery aliquot. Store at -20°C or -80°C. Avoid freeze / thaw cycle.
バッファー	Preservative: 0.05% Sodium azide Constituents: 50% Glycerol (glycerin, glycerine), 0.1% BSA, 49% PBS
精製度	Immunogen affinity purified
ポリ/モノ	ポリクローナル
アイソタイプ	IgG

アプリケーション

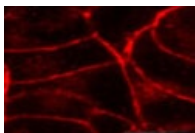
The Abpromise guarantee **Abpromise保証は、** 次のテスト済みアプリケーションにおけるab3558の使用に適用されます
アプリケーションノートには、推奨の開始希釈率がありますが、適切な希釈率につきましてはご検討ください。

アプリケーション	Abreviews	特記事項
IP		Use at an assay dependent concentration. PubMed: 22387618
ICC/IF		1/1000.
IHC-Fr		Use at an assay dependent concentration.
IHC-P		Use at an assay dependent concentration.
Flow Cyt		Use at an assay dependent concentration. PubMed: 20206138 ab171870 - Rabbit polyclonal IgG, is suitable for use as an isotype control with this antibody.
WB		Use at an assay dependent concentration. Predicted molecular weight: 53 kDa. By Western blot, this antibody detects an ~60 kDa protein representing CB1 from rat brain homogenate.

ターゲット情報

機能	Involved in cannabinoid-induced CNS effects. Acts by inhibiting adenylate cyclase. Could be a receptor for anandamide. Inhibits L-type Ca(2+) channel current. Isoform 2 and isoform 3 have altered ligand binding.
組織特異性	Widely expressed.
配列類似性	Belongs to the G-protein coupled receptor 1 family.
細胞内局在	Cell membrane.

画像



ab3558 at a 1:1000 dilution staining Rat CB1 in transfected AtT20 cells by immunocytochemistry.

Immunocytochemistry/ Immunofluorescence - Anti-Cannabinoid Receptor I antibody (ab3558)

Please note: All products are "FOR RESEARCH USE ONLY. NOT FOR USE IN DIAGNOSTIC PROCEDURES"

Our Abpromise to you: Quality guaranteed and expert technical support

- Replacement or refund for products not performing as stated on the datasheet
- Valid for 12 months from date of delivery
- Response to your inquiry within 24 hours
- We provide support in Chinese, English, French, German, Japanese and Spanish
- Extensive multi-media technical resources to help you
- We investigate all quality concerns to ensure our products perform to the highest standards

If the product does not perform as described on this datasheet, we will offer a refund or replacement. For full details of the Abpromise, please visit <https://www.abcam.co.jp/abpromise> or contact our technical team.

Terms and conditions

- Guarantee only valid for products bought direct from Abcam or one of our authorized distributors